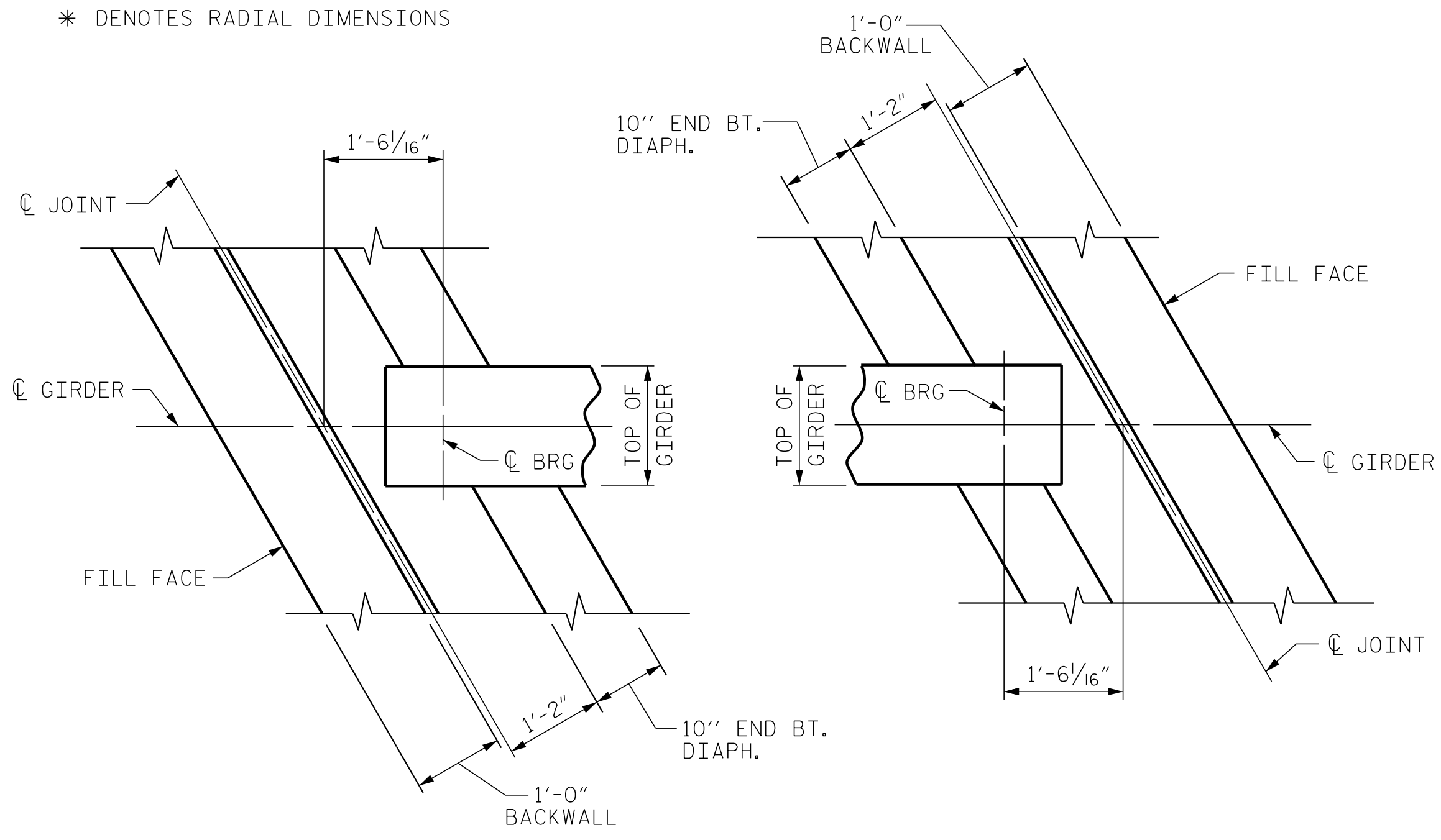


HALF SECTION - END BENT DIAPHRAGM

HALF SECTION - INTERMEDIATE DIAPHRAGM

TYPICAL SECTION

* DENOTES RADIAL DIMENSIONS



END BENT No. 1 DIAPHRAGM

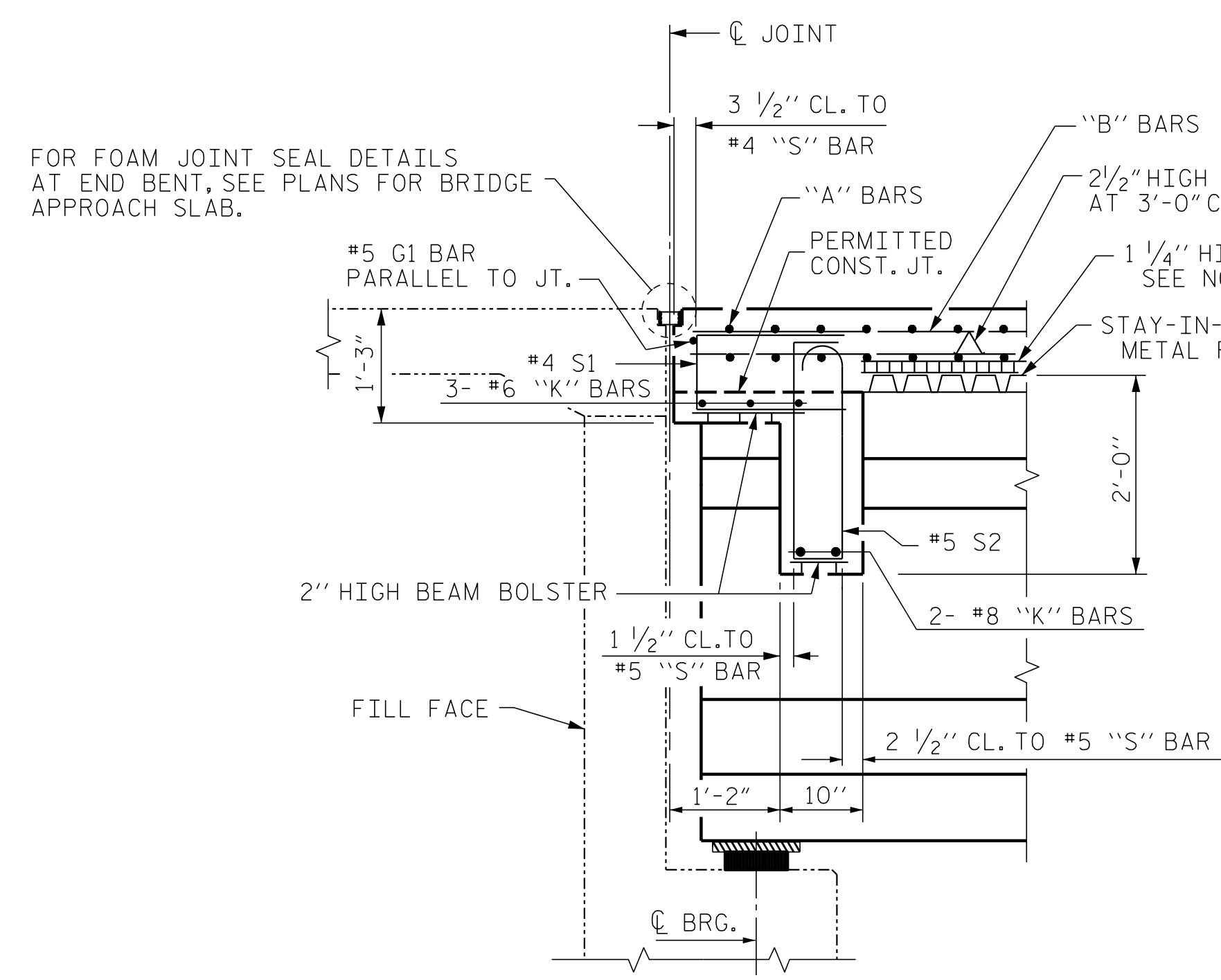
END BENT No. 2 DIAPHRAGM

PLAN

NOTES

- PROVIDE 1/4" HIGH BEAM BOLSTERS UPPER AT 4'-0" CTS. ATOP THE METAL STAY-IN-PLACE FORMS TO SUPPORT THE BOTTOM MAT OF 'A' BARS. WHEN USING REMOVABLE FORMS, PROVIDE CONTINUOUS HIGH CHAIRS FOR METAL DECK (C.H.C.M.) @ 4'-0" CTS. WITH A HEIGHT TO SUPPORT THE BOTTOM MAT OF 'A' BARS A CLEAR DISTANCE OF 2 1/2" ABOVE THE TOP OF THE REMOVABLE FORM.
- LONGITUDINAL STEEL MAY BE SHIFTED SLIGHTLY, AS NECESSARY, TO AVOID INTERFERENCE WITH STIRRUPS IN PRESTRESSED CONCRETE GIRDERS.
- BARRIER RAIL SHALL NOT BE CAST UNTIL ALL SLAB CONCRETE HAS BEEN CAST AND HAS REACHED A MINIMUM COMPRESSIVE STRENGTH OF 3,000 PSI.
- #5 G1 BAR MAY BE SHIFTED SLIGHTLY AS NECESSARY TO CLEAR REINFORCING STEEL AND STIRRUPS.

PROJECT NO. W-5600
JOHNSTON COUNTY
 STATION: 217+31.76 -L-

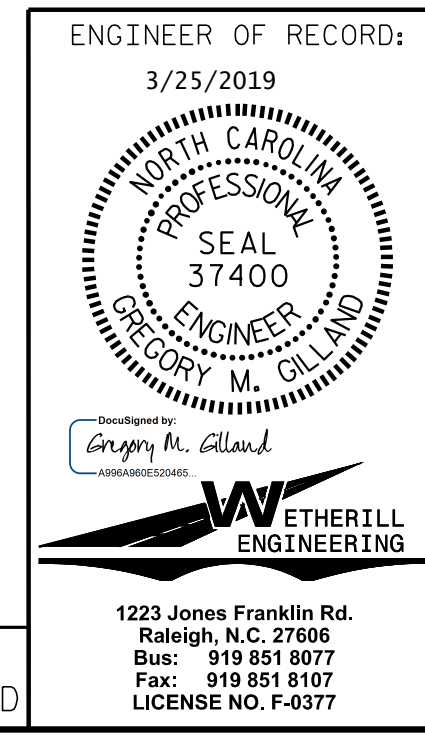


SECTION THRU END BENT DIAPHRAGM

P:\2017\1712101\W-5600_STRUCTURES\DGN\L- over -Y9-DGN (LEFT LANE)\WE-5600-Y9-TS (LEFT LANE)_WE_I.dgn
 3/20/2019 7:35:59 AM

DRAWN BY: D. HODGE DATE: 12/17
 CHECKED BY: G.M. GILLAND DATE: 2/18

DOCUMENT NOT CONSIDERED FINAL
 UNLESS ALL SIGNATURES COMPLETED



STATE OF NORTH CAROLINA DEPARTMENT OF TRANSPORTATION RALEIGH		SUPERSTRUCTURE TYPICAL SECTION (LEFT LANE)	
REVISIONS			
NO.	BY:	DATE:	SHEET NO.
1			S1-6
2			TOTAL SHEETS
			27