

8/17/99

MATCHLINE -L- STA. 163+00 SEE SHEET UC-16A

UTILITY CONSTRUCTION

FINAL DESIGN

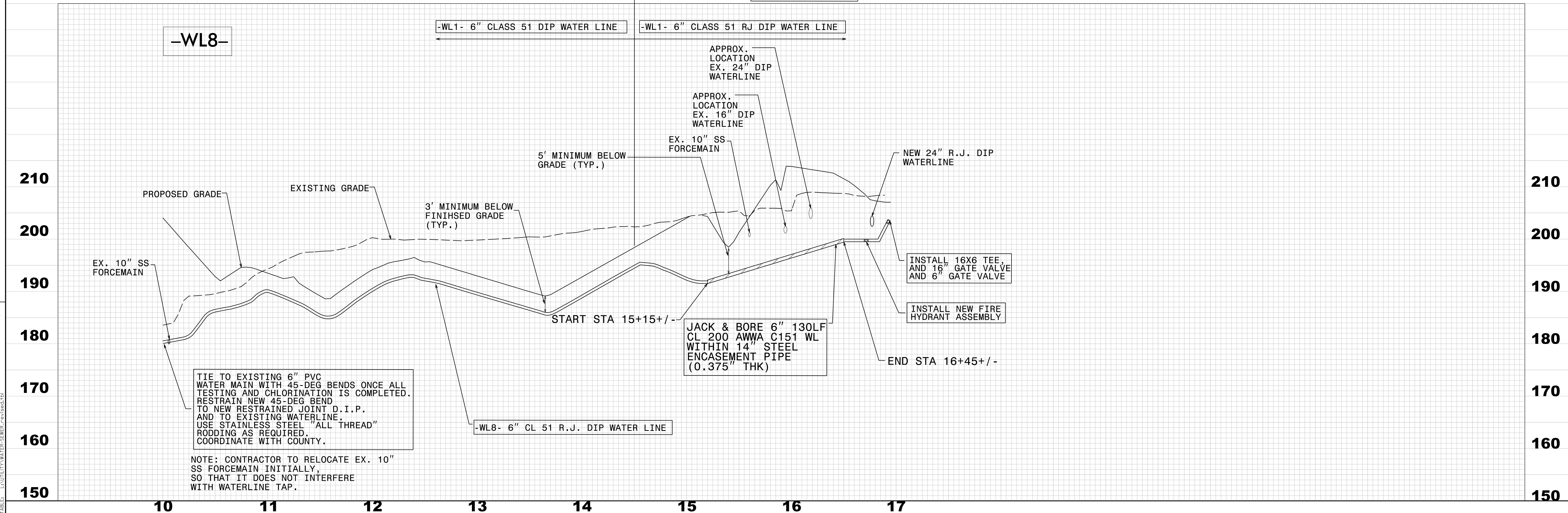
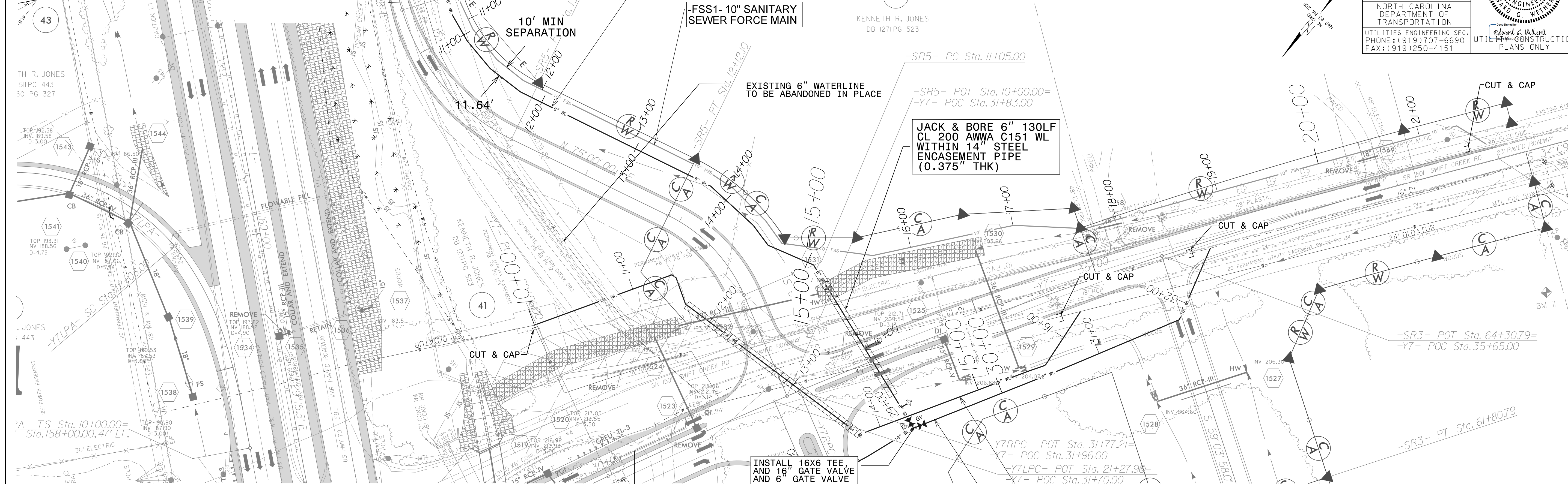
PROJECT REFERENCE NO.	SHEET NO.
W-5600	UC-15E
DESIGNED BY: SS	6/5/2020 10:51:38
DRAWN BY: SS	
CHECKED BY: MVZ	
APPROVED BY: MVZ	
REVISED:	
NORTH CAROLINA DEPARTMENT OF TRANSPORTATION	
UTILITIES ENGINEERING SECTION	
PHONE: (919) 707-6690	
FAX: (919) 250-4151	



DOCUMENT NOT CONSIDERED FINAL UNLESS ALL SIGNATURES COMPLETED

RELEASE FOR CONSTRUCTION

NOTE: CONTRACTOR TO UTILIZE HORIZONTAL & VERTICAL BENDS AS NECESSARY



TIE TO EXISTING 6" PVC WATER MAIN WITH 45-DEG BENDS ONCE ALL TESTING AND CHLORINATION IS COMPLETED. RESTRAIN NEW 45-DEG BEND TO NEW RESTRAINED JOINT D.I.P. AND TO EXISTING WATERLINE. USE STAINLESS STEEL "ALL THREAD" RODDING AS REQUIRED. COORDINATE WITH COUNTY.

NOTE: CONTRACTOR TO RELOCATE EX. 10" SS FORCEMAIN INITIALLY, SO THAT IT DOES NOT INTERFERE WITH WATERLINE TAP.

REVISIONS

8/17/99  
 E. G. O'NEIL  
 PROFESSIONAL ENGINEER  
 LICENSE NO. 10773  
 STATE OF NORTH CAROLINA