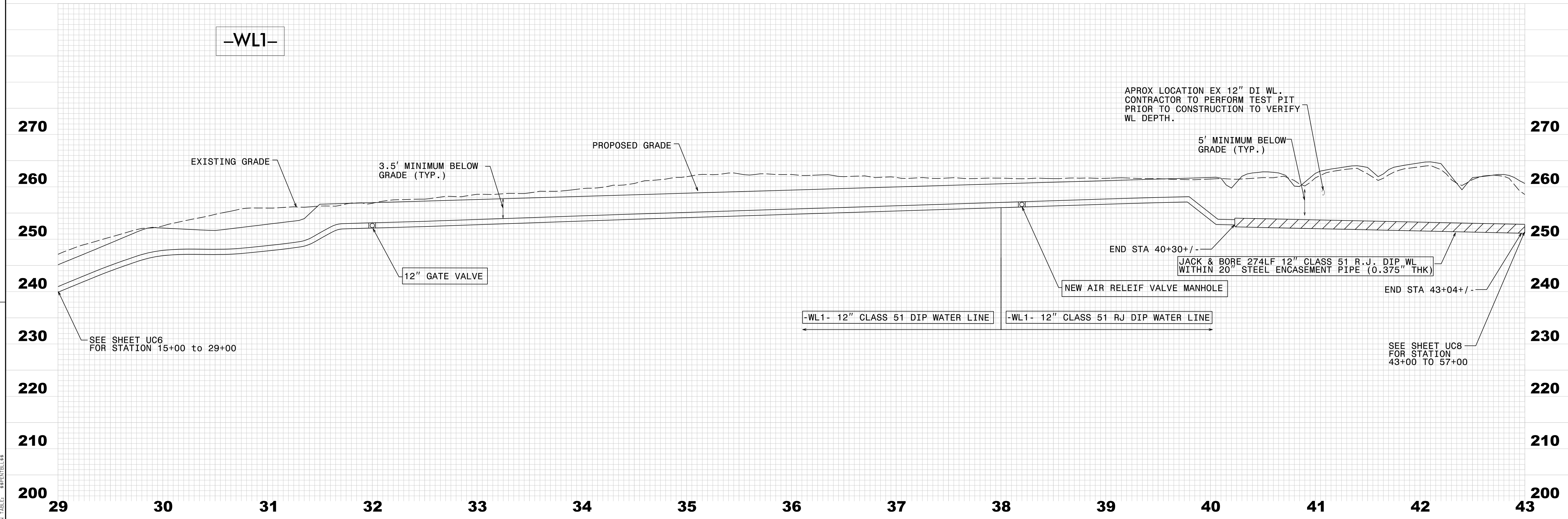
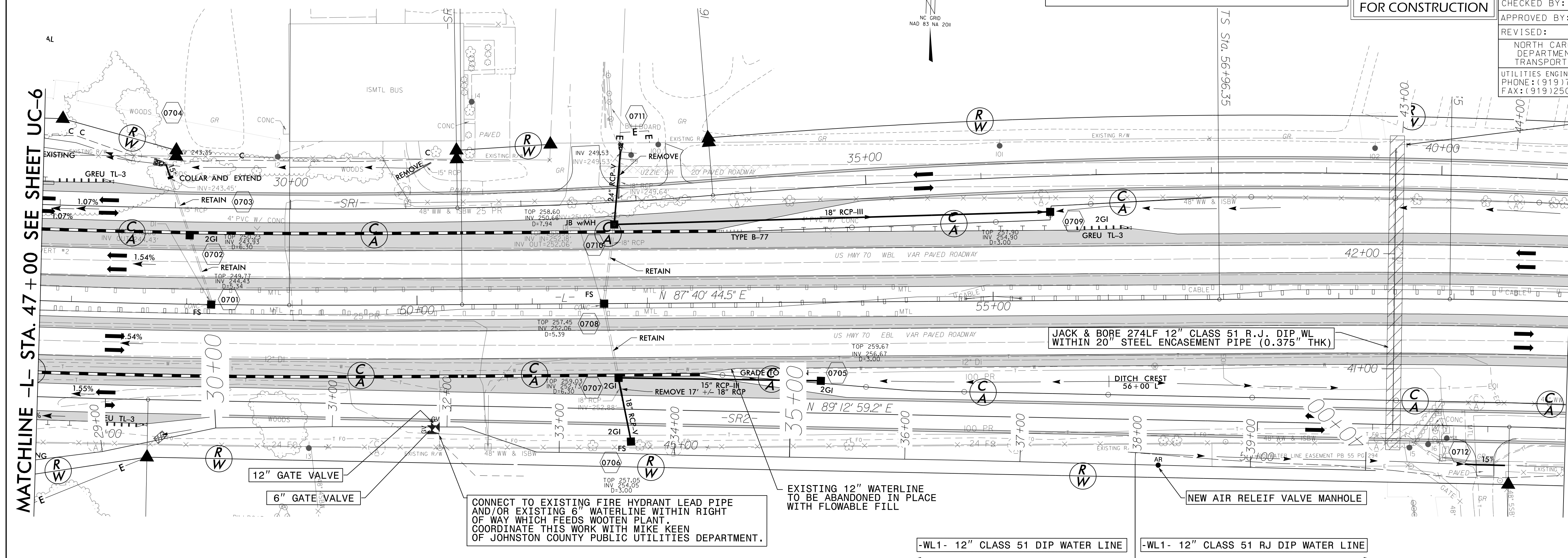


NOTE: CONTRACTOR TO UTILIZE HORIZONTAL & VERTICAL BENDS AS NECESSARY

UTILITY CONSTRUCTION
DOCUMENT NOT CONSIDERED FINAL
UNLESS ALL SIGNATURES COMPLETED

FINAL DESIGN
RELEASE
FOR CONSTRUCTION

PROJECT REFERENCE NO.	SHEET NO.
W-5600	UC-7
DESIGNED BY: SS	11/20/2019
DRAWN BY: SS	
CHECKED BY: MVZ	
APPROVED BY: MVZ	
REVISED:	
NORTH CAROLINA PROFESSIONAL ENGINEER MICHAEL V. ZACCARDO 022321	
NORTH CAROLINA DEPARTMENT OF TRANSPORTATION UTILITIES ENGINEERING SEC. PHONE: (919) 707-6650 FAX: (919) 250-4151	



REVISIONS

SEE SHEET UC6 FOR STATION 15+00 TO 29+00

SEE SHEET UC8 FOR STATION 43+00 TO 57+00

EXISTING 12" WATERLINE TO BE ABANDONED IN PLACE END FLOWABLE FILL.

MATCHLINE -L- STA. 60+00 SEE SHEET UC-8

MATCHLINE -L- STA. 47+00 SEE SHEET UC-6

CONNECT TO EXISTING FIRE HYDRANT LEAD PIPE AND/OR EXISTING 6" WATERLINE WITHIN RIGHT OF WAY WHICH FEEDS WOOTEN PLANT. COORDINATE THIS WORK WITH MIKE KEEN OF JOHNSTON COUNTY PUBLIC UTILITIES DEPARTMENT.

EXISTING 12" WATERLINE TO BE ABANDONED IN PLACE WITH FLOWABLE FILL

NEW AIR RELEIF VALVE MANHOLE

JACK & BORE 274LF 12" CLASS 51 R.J. DIP WL WITHIN 20" STEEL ENCASEMENT PIPE (0.375" THK)

-WL1- 12" CLASS 51 DIP WATER LINE

-WL1- 12" CLASS 51 RJ DIP WATER LINE

APROX LOCATION EX 12" DI WL. CONTRACTOR TO PERFORM TEST PIT PRIOR TO CONSTRUCTION TO VERIFY WL DEPTH.

5' MINIMUM BELOW GRADE (TYP.)

JACK & BORE 274LF 12" CLASS 51 R.J. DIP WL WITHIN 20" STEEL ENCASEMENT PIPE (0.375" THK)

NEW AIR RELEIF VALVE MANHOLE

-WL1- 12" CLASS 51 DIP WATER LINE

-WL1- 12" CLASS 51 RJ DIP WATER LINE

29 30 31 32 33 34 35 36 37 38 39 40 41 42 43

270 260 250 240 230 220 210 200