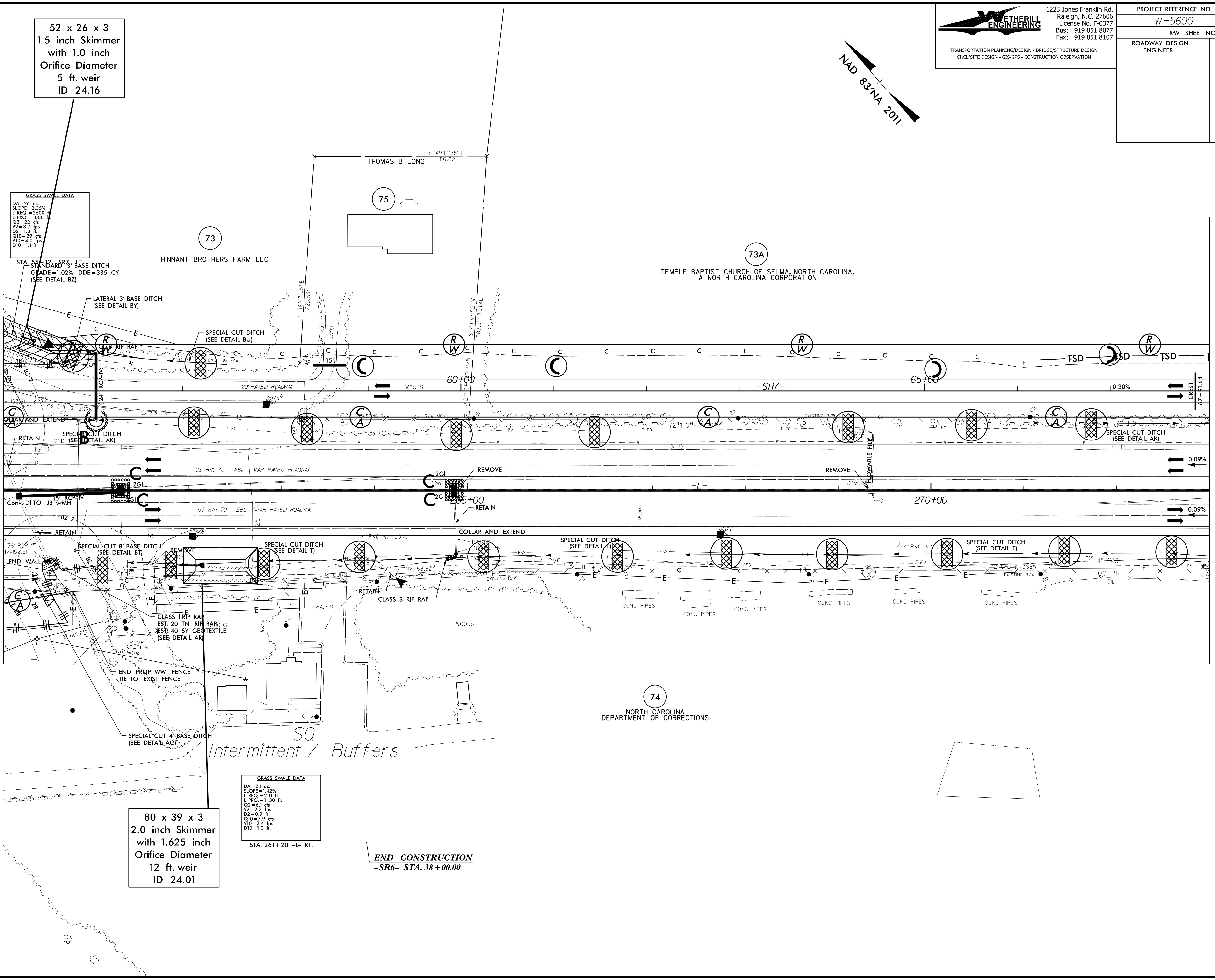
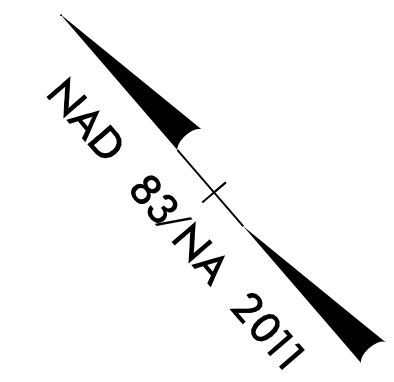


8/17/99

ETHERILL ENGINEERING
 1223 Jones Franklin Rd.
 Raleigh, N.C. 27606
 License No. F-0377
 Bus: 919 851 8077
 Fax: 919 851 8107

TRANSPORTATION PLANNING/DESIGN - BRIDGE/STRUCTURE DESIGN
 CIVIL/SITE DESIGN - GIS/GPS - CONSTRUCTION OBSERVATION

PROJECT REFERENCE NO.	SHEET NO.
W-5600	EC-47/CONST.24
RW SHEET NO.	
ROADWAY DESIGN ENGINEER	HYDRAULICS ENGINEER



52 x 26 x 3
 1.5 inch Skimmer
 with 1.0 inch
 Orifice Diameter
 5 ft. weir
 ID 24.16

GRASS SWALE DATA
 DA=26 ac.
 SLOPE=2.35%
 L REQ.=3600 ft.
 L PRO.=1000 ft.
 Q2=22 cfs
 V2=3.7 fps
 D2=1.0 ft.
 Q10=29 cfs
 V10=4.0 fps
 D10=1.1 ft.

STA. 55+12 - SR7 - LT
 STANDARD 3' BASE DITCH
 GRADE=1.02% DDE=335 CY
 (SEE DETAIL BZ)

LATERAL 3' BASE DITCH
 (SEE DETAIL BY)

73

HINNANT BROTHERS FARM LLC

75

73A

TEMPLE BAPTIST CHURCH OF SELMA, NORTH CAROLINA,
 A NORTH CAROLINA CORPORATION

MATCHLINE
 -L- STA. 260+00
 SEE SHEET 23

MATCHLINE
 -L- STA. 273+00
 SEE SHEET 25

COLLAR AND EXTEND
 RETAIN
 10" DIP (SEE DETAIL AK)

15" RCP-IV
 CONC. DI. TO JB-VAH

15" RCP-IV
 CONC. DI. TO JB-VAH

15" RCP-IV
 CONC. DI. TO JB-VAH

15" RCP-IV
 CONC. DI. TO JB-VAH

15" RCP-IV
 CONC. DI. TO JB-VAH

15" RCP-IV
 CONC. DI. TO JB-VAH

15" RCP-IV
 CONC. DI. TO JB-VAH

15" RCP-IV
 CONC. DI. TO JB-VAH

15" RCP-IV
 CONC. DI. TO JB-VAH

15" RCP-IV
 CONC. DI. TO JB-VAH

15" RCP-IV
 CONC. DI. TO JB-VAH

15" RCP-IV
 CONC. DI. TO JB-VAH

15" RCP-IV
 CONC. DI. TO JB-VAH

15" RCP-IV
 CONC. DI. TO JB-VAH

15" RCP-IV
 CONC. DI. TO JB-VAH

15" RCP-IV
 CONC. DI. TO JB-VAH

15" RCP-IV
 CONC. DI. TO JB-VAH

15" RCP-IV
 CONC. DI. TO JB-VAH

15" RCP-IV
 CONC. DI. TO JB-VAH

15" RCP-IV
 CONC. DI. TO JB-VAH

15" RCP-IV
 CONC. DI. TO JB-VAH

15" RCP-IV
 CONC. DI. TO JB-VAH

15" RCP-IV
 CONC. DI. TO JB-VAH

15" RCP-IV
 CONC. DI. TO JB-VAH

15" RCP-IV
 CONC. DI. TO JB-VAH

15" RCP-IV
 CONC. DI. TO JB-VAH

80 x 39 x 3
 2.0 inch Skimmer
 with 1.625 inch
 Orifice Diameter
 12 ft. weir
 ID 24.01

GRASS SWALE DATA
 DA=21 ac.
 SLOPE=1.42%
 L REQ.=210 ft.
 L PRO.=1430 ft.
 Q2=6.1 cfs
 V2=2.3 fps
 D2=0.9 ft.
 Q10=7.9 cfs
 V10=2.4 fps
 D10=1.0 ft.

STA. 261+20 -L- RT.

END CONSTRUCTION
 -SR6- STA. 38+00.00

74

NORTH CAROLINA
 DEPARTMENT OF CORRECTIONS

SQ
 Intermittent / Buffers

