


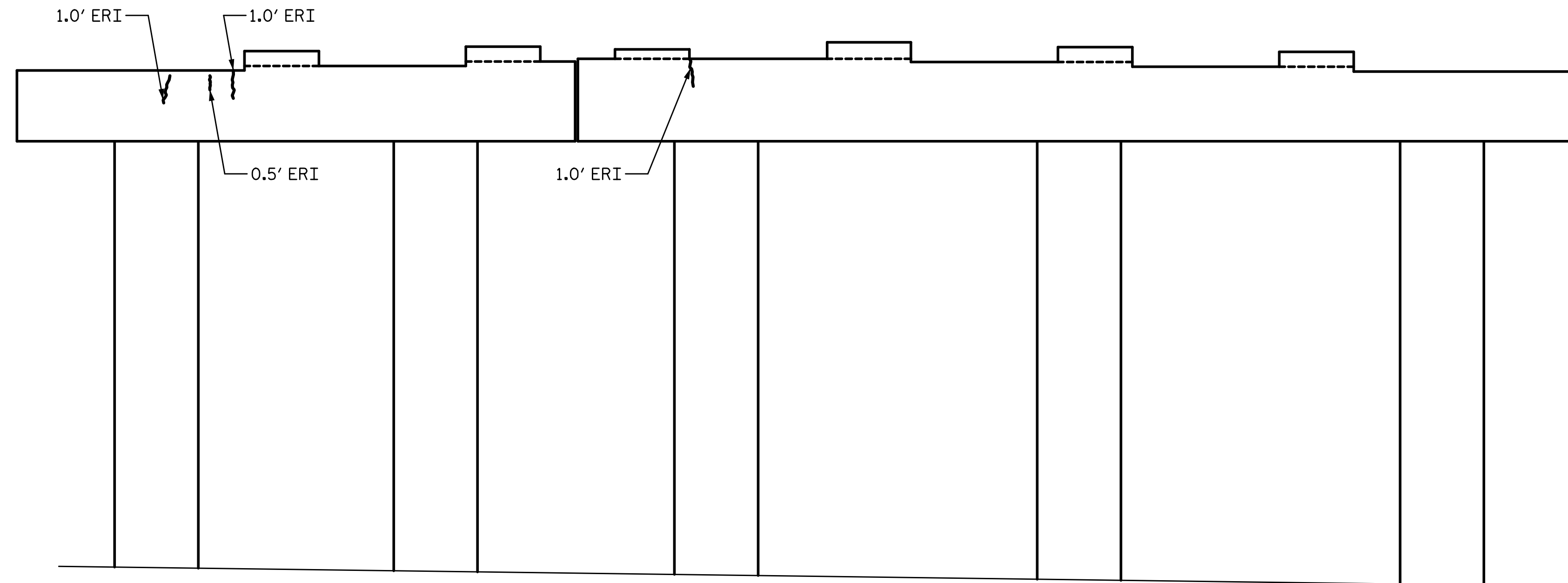
1/14/2020 10:06:38 AM G:\Projects\2017\I-5711\Structures\Preservation\Drawings\401_I5711_SMU_B3R_000177.dgn

 SHOTCRETE REPAIR
 ERI — EPOXY RESIN INJECTION

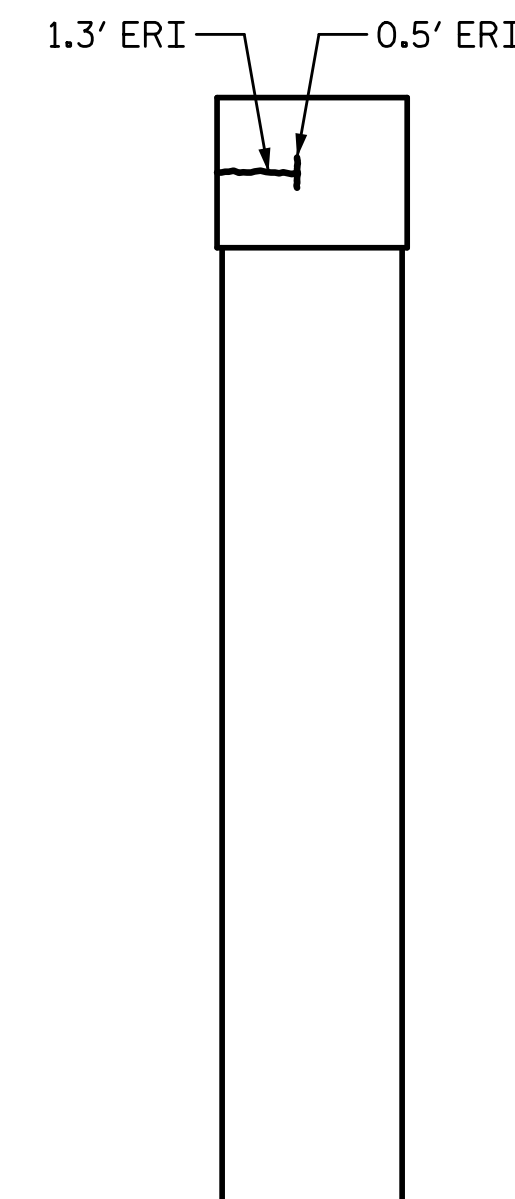
REPAIR QUANTITY TABLE					
REPAIRS BENT 3	QUANTITIES				
	ESTIMATE		ACTUAL		
SHOTCRETE REPAIRS	AREA SF	VOLUME CF	AREA SF	DEPTH FT	VOLUME CF
CAP (VERTICAL FACE)	0.0	0.0			
CAP (HORIZONTAL, CORNER)	0.0	0.0			
COLUMN	15.2	4.5			
EPOXY RESIN INJECTION		LF			LF
CAP		21.6			
COLUMN		7.3			
EPOXY COATING		AREA SF			AREA SF
TOP OF CAP		161.5			

NOTES:

VALUES IN CHART REPRESENT ESTIMATE REPAIR TOTALS AFTER REMOVAL OF UNSOUND CONCRETE, MIN. OF 1" BEHIND REBAR AND MIN. 2" CL. TO SAWCUT. SEE REPAIR DETAILS.

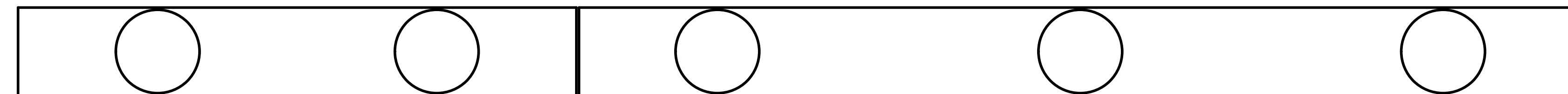


ELEVATION
SPAN D FACE



END VIEW
EAST FACE

SPAN C



SPAN D

PLAN
BOTTOM OF CAP
LOOKING UP

PROJECT NO. I-5711
ALAMANCE COUNTY
 STATION: STA. 27+02.26 -L-

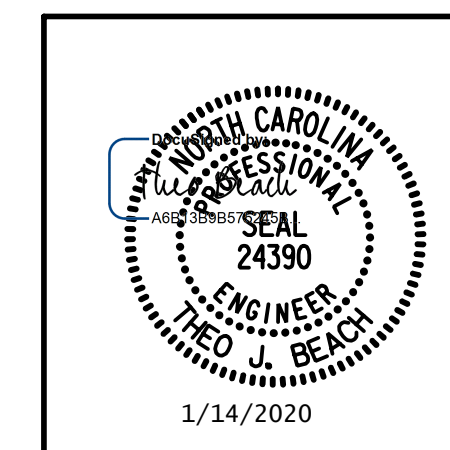
SHEET 2 OF 2

STATE OF NORTH CAROLINA
 DEPARTMENT OF TRANSPORTATION
 RALEIGH
 PRESERVATION

BENT 3

PLANS PREPARED BY:

SEA & A
 IMPSON ENGINEERS ASSOCIATES
 5640 Dillard Drive
 Suite 200
 Cary, NC 27518
 (919) 852-0468
 (919) 852-0598 (Fax)
 www.simpsonengr.com
 LICENSURE NO. C-2521



REVISIONS

NO.	BY:	DATE:	NO.	BY:	DATE:
1			3		
2			4		

SHEET NO.
S-87
TOTAL SHEETS
89

DRAWN BY: <u>T. BANKOVICH</u>	DATE: <u>1-20</u>
CHECKED BY: <u>T. BEACH</u>	DATE: <u>1-20</u>
DESIGN ENGINEER OF RECORD: <u>T. BEACH</u>	DATE: <u>1-20</u>

**DOCUMENT NOT CONSIDERED FINAL
 UNLESS ALL SIGNATURES COMPLETED**