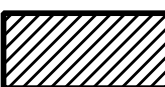
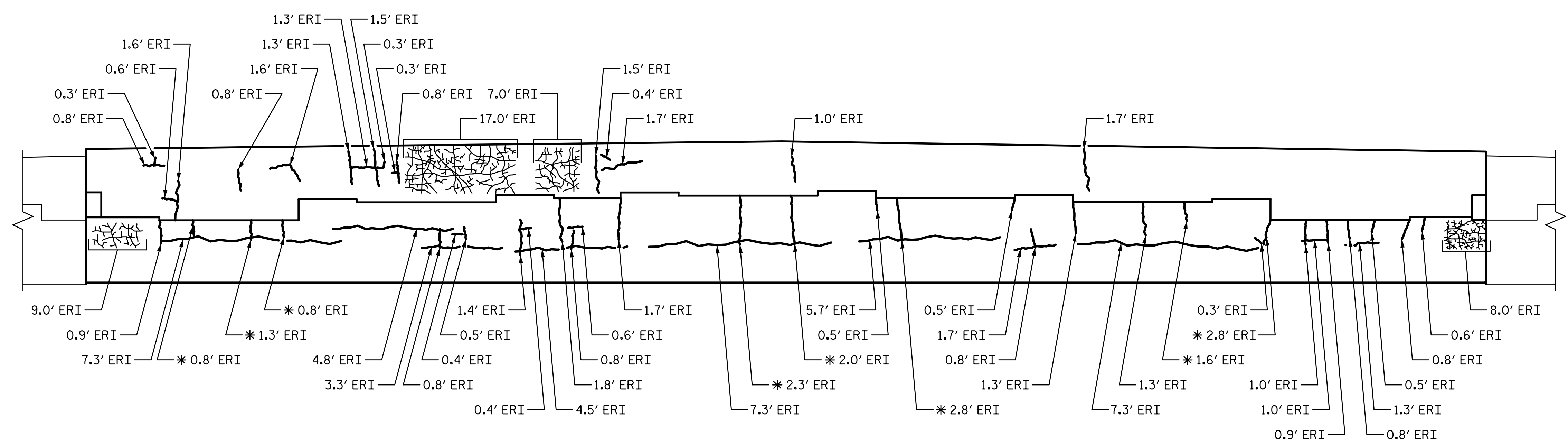
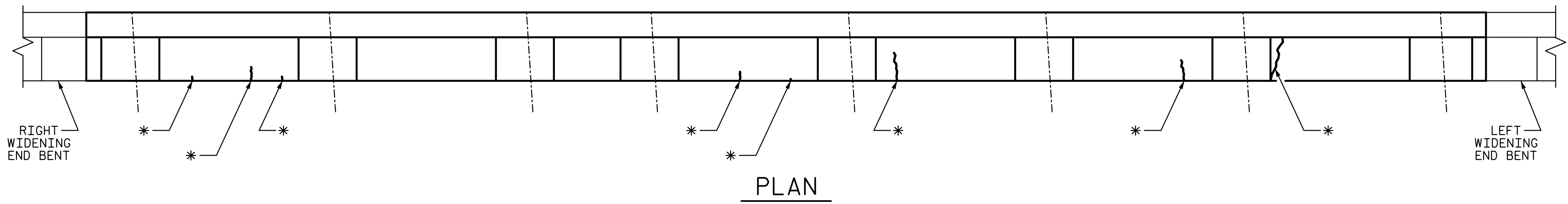


### REPAIR QUANTITY TABLE

REPAIRS END BENT 1	QUANTITIES				
	ESTIMATE		ACTUAL		
SHOTCRETE REPAIRS	AREA SF	VOLUME CF	AREA SF	DEPTH FT	VOLUME CF
CAP (VERTICAL FACE)	0.0	0.0			
CAP (HORIZONTAL, CORNER)	0.0	0.0			
EPOXY RESIN INJECTION		LF			LF
CAP		135.7			
EPOXY COATING		AREA SF			AREA SF
TOP OF CAP		83.0			

 SHOTCRETE REPAIR  
 ERI — EPOXY RESIN INJECTION



**NOTES:**

REPAIR LOCATIONS AND ESTIMATE OF THE QUANTITIES ARE GIVEN WITH THE BEST INFORMATION AVAILABLE. IF ADDITIONAL REPAIRS NOT SHOWN ON THE DRAWINGS ARE DEEMED NECESSARY BY THE INSPECTOR OR ENGINEER THE CONTRACTOR SHALL NOTE ON THE DRAWINGS THE APPROXIMATE LOCATION AND DESCRIPTION OF THE REPAIRS AND ADJUST THE ACTUAL QUANTITIES ENTERED INTO THE REPAIR QUANTITY TABLE.

FOR EPOXY COATING, SEE SPECIAL PROVISIONS.

FOR SUBSTRUCTURE REPAIR DETAIL, SEE "SUBSTRUCTURE REPAIR DETAIL" SHEET.

FOR EPOXY RESIN INJECTION, SEE SPECIAL PROVISIONS.

FOR SHOTCRETE REPAIRS, SEE SPECIAL PROVISIONS.

SHOTCRETE REPAIR MAY BE REPLACED WITH CONCRETE REPAIRS WITH THE APPROVAL OF THE ENGINEER.

THE CONTRACTOR SHALL CLEAN AND EPOXY COAT PAINT THE TOP SURFACE OF BENT CAP.

FOR EPOXY COATING, SEE SPECIAL PROVISIONS.

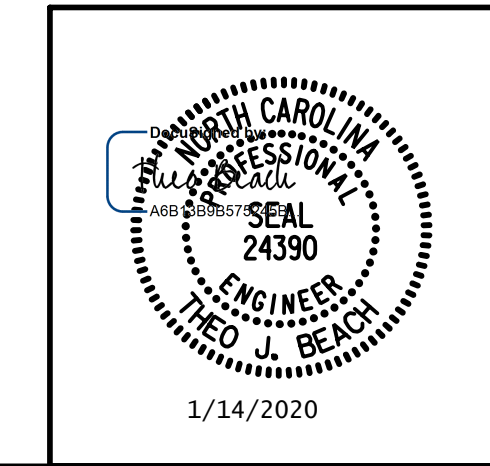
VALUES IN CHART REPRESENT ESTIMATE REPAIR TOTALS AFTER REMOVAL OF UNSOUND CONCRETE, MIN. OF 1" BEHIND REBAR AND MIN. 2" CL. TO SAWCUT. SEE REPAIR DETAILS.

PROJECT NO. I-5711  
ALAMANCE COUNTY  
 STATION: STA. 27+02.26 -L-

1/14/2020 10:06:36 AM G:\Projects\2017\I-5711\Structures\Preservation\Drawings\401\_I5711\_SMU\_EIR\_000177.dgn

DRAWN BY: T. BANKOVICH DATE: 1-20  
 CHECKED BY: T. BEACH DATE: 1-20  
 DESIGN ENGINEER OF RECORD: T. BEACH DATE: 1-20

PLANS PREPARED BY:  
  
 5640 Dillard Drive  
 Suite 200  
 Cary, NC 27518  
 (919) 852-0468  
 (919) 852-0598 (Fax)  
 www.simpsonengr.com  
 LICENSURE NO. C-2521



STATE OF NORTH CAROLINA  
 DEPARTMENT OF TRANSPORTATION  
 RALEIGH  
 PRESERVATION

**END BENT 1**

REVISIONS						SHEET NO.
NO.	BY:	DATE:	NO.	BY:	DATE:	S-81
1			3			TOTAL SHEETS
2			4			89

**DOCUMENT NOT CONSIDERED FINAL  
 UNLESS ALL SIGNATURES COMPLETED**