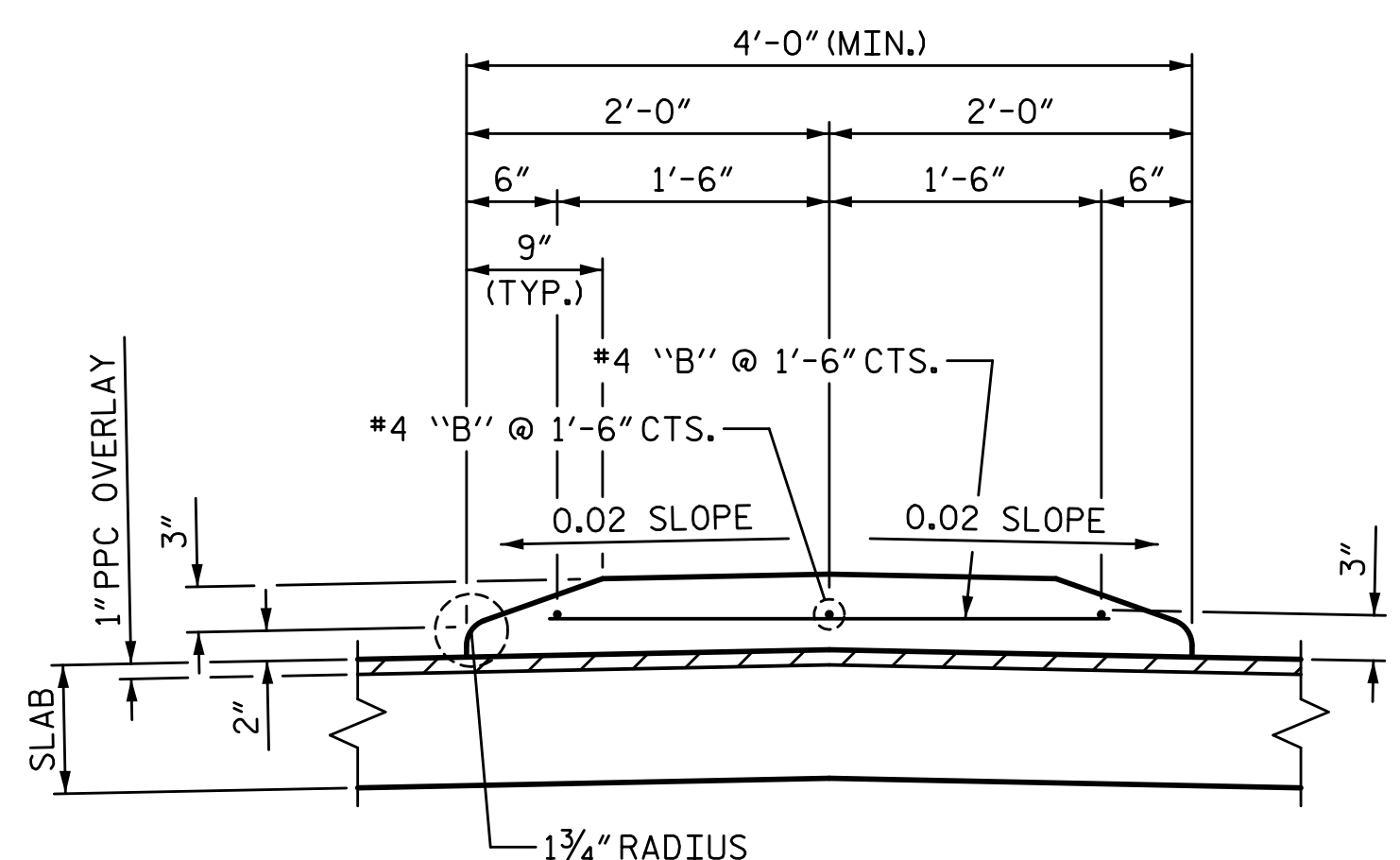
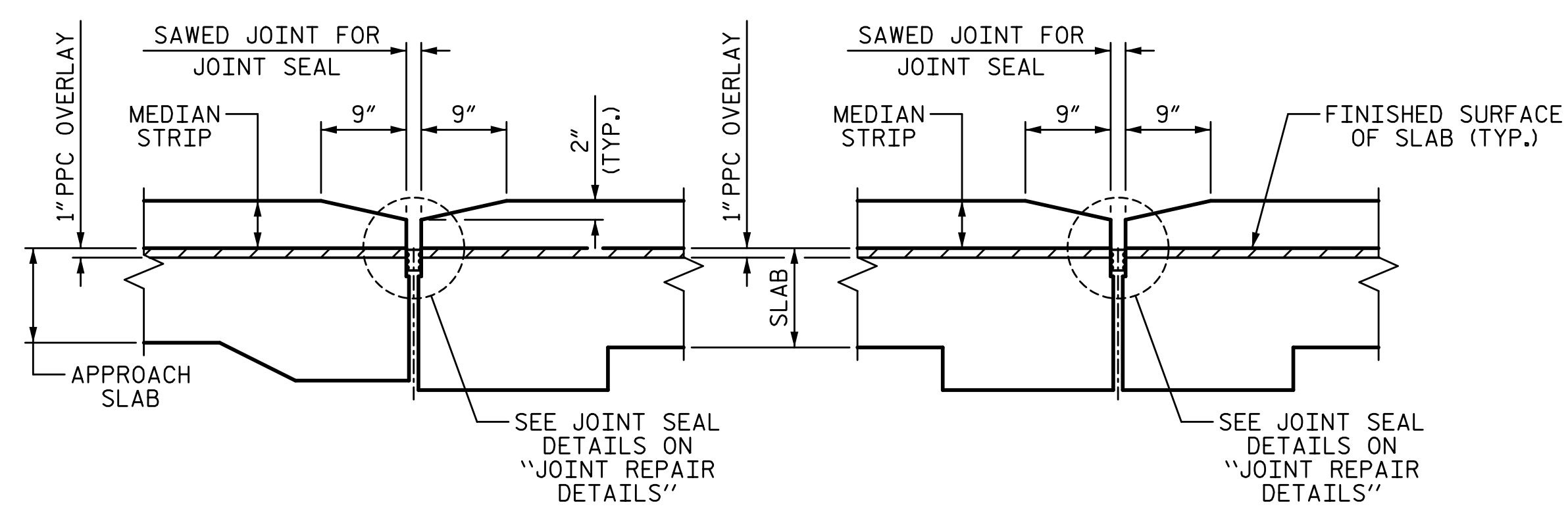


1/14/2020 10:06:36 AM G:\Projects\2017\I-5711\Structures\Preservation\Drawings\401_I5711_SMU_MD_000177.dgn



SECTION A-A
SECTION THRU MONOLITHIC CONCRETE ISLAND



APPROACH SLAB
END BENT 1 SHOWN, END BENT 2 SIMILAR

BENT
BENTS 1, 2, & 3

DETAILS AT JOINT

NOTES:

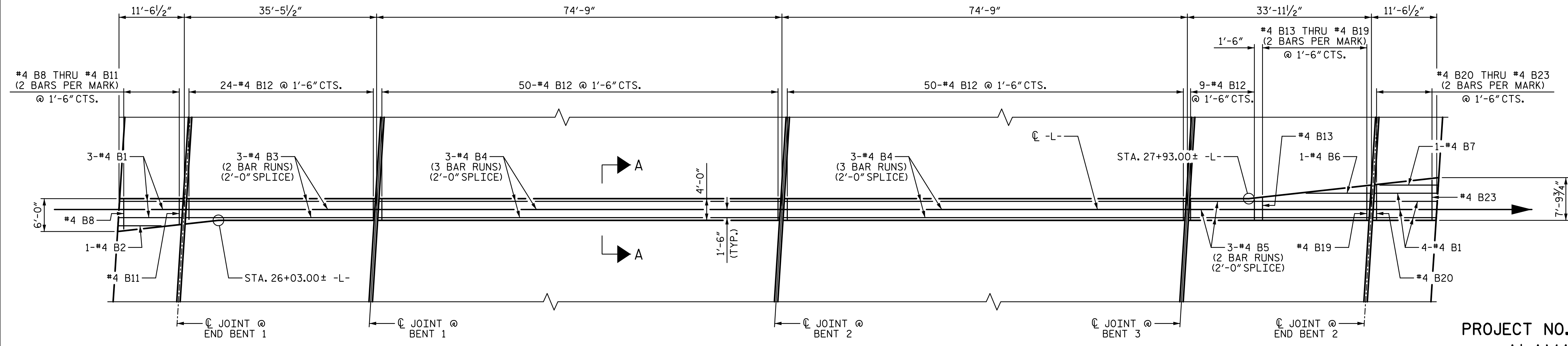
ALL REINFORCING STEEL IN MONOLITHIC CONCRETE ISLAND SHALL BE EPOXY COATED.

GROOVED CONTRACTION JOINTS, 1/2" IN DEPTH, SHALL BE TOOLED IN ALL EXPOSED FACES OF THE MONOLITHIC CONCRETE ISLAND IN ACCORDANCE WITH ARTICLE 825-10(B) OF THE STANDARD SPECIFICATIONS. THE CONTRACTION JOINTS SHALL BE LOCATED AT A SPACING OF 8 FT. TO 10 FT. BETWEEN EXPANSION JOINTS. NO CONTRACTION JOINTS WILL BE REQUIRED FOR SEGMENTS LESS THAN 10 FEET IN LENGTH.

THE MONOLITHIC CONCRETE ISLAND TO BE INSTALLED AFTER THE POLYESTER POLYMER OVERLAY HAS BEEN COMPLETED AND CURED.

BILL OF MATERIAL					
BAR	NO.	SIZE	TYPE	LENGTH	WEIGHT
* B1	7	#4	STR	11'-2"	52
* B2	1	#4	STR	7'-3"	5
* B3	6	#4	STR	18'-6"	74
* B4	18	#4	STR	26'-1"	314
* B5	6	#4	STR	17'-9"	71
* B6	1	#4	STR	11'-9"	8
* B7	1	#4	STR	10'-1"	7
* B8	2	#4	STR	4'-11"	7
* B9	2	#4	STR	4'-7"	6
* B10	2	#4	STR	4'-3"	6
* B11	2	#4	STR	3'-11"	5
* B12	133	#4	STR	3'-2"	281
* B13	2	#4	STR	3'-5"	5
* B14	2	#4	STR	3'-9"	5
* B15	2	#4	STR	4'-1"	5
* B16	2	#4	STR	4'-5"	6
* B17	2	#4	STR	4'-9"	6
* B18	2	#4	STR	5'-1"	7
* B19	2	#4	STR	5'-5"	7
* B20	2	#4	STR	5'-9"	8
* B21	2	#4	STR	6'-0"	8
* B22	2	#4	STR	6'-5"	9
* B23	2	#4	STR	6'-9"	9
EPOXY COATED REINFORCING STEEL					911 LB
CLASS A CONCRETE SUPERSTRUCTURE					14.0 CY
APPROACH SLAB					2.2 CY
TOTAL					16.2 CY

* INDICATES EPOXY COATED REINFORCING STEEL



SPAN A **SPAN B** **SPAN C** **SPAN D**

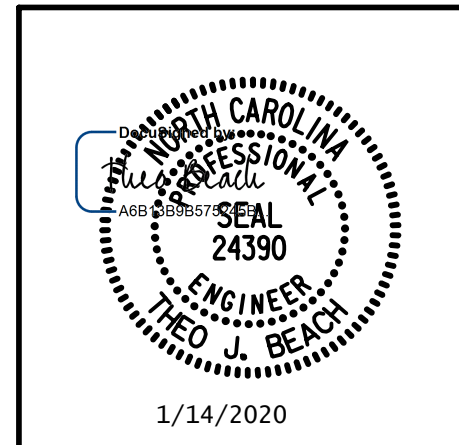
PLAN OF MONOLITHIC CONCRETE ISLAND

SEE ROADWAY PLANS FOR MEDIAN DETAILS AND PAY ITEMS BEYOND THE LIMITS OF THE BRIDGE

PROJECT NO. I-5711
ALAMANCE COUNTY
 STATION: STA. 27+02.26 -L-

DRAWN BY: T. BANKOVICH DATE: 1-20
 CHECKED BY: T. BEACH DATE: 1-20
 DESIGN ENGINEER OF RECORD: T. BEACH DATE: 1-20

PLANS PREPARED BY:
SE & A
 IMPSON ENGINEERS ASSOCIATES
 5640 Dillard Drive
 Suite 200
 Cary, NC 27518
 (919) 852-0468
 (919) 852-0538 (Fax)
 www.simpsonengr.com
 LICENSURE NO. C-2521



STATE OF NORTH CAROLINA
 DEPARTMENT OF TRANSPORTATION
 RALEIGH
 PRESERVATION

MONOLITHIC CONCRETE ISLAND DETAILS

REVISIONS					
NO.	BY:	DATE:	NO.	BY:	DATE:
1			3		
2			4		

SHEET NO. S-80
 TOTAL SHEETS 89

DOCUMENT NOT CONSIDERED FINAL UNLESS ALL SIGNATURES COMPLETED