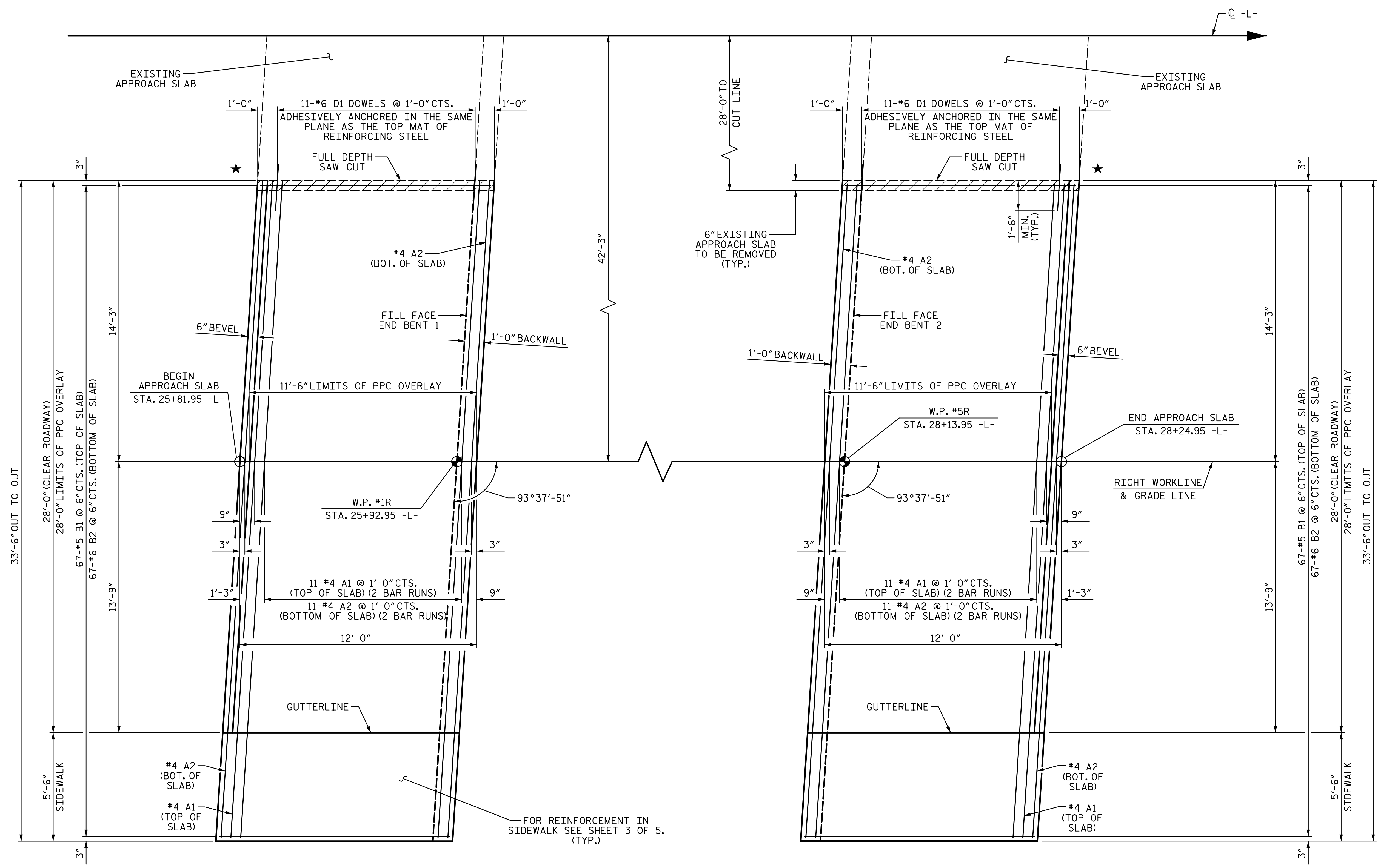


**NOTES:**  
 FOR PPC OVERLAY QUANTITIES,  
 SEE BILL OF MATERIAL SHEET  
 2 OF 2.



**PLAN @ END BENT 1**

★ REMOVE EXISTING CONCRETE FLUME.  
 NOT SHOWN FOR CLARITY.

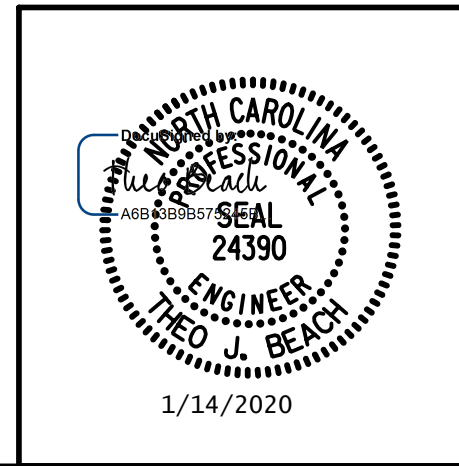
**PLAN @ END BENT 2**

★ REMOVE EXISTING CONCRETE FLUME.  
 NOT SHOWN FOR CLARITY.

1/14/2020 10:06:33 AM G:\Projects\2017\I-5711\Structures\Drawings\Final\401-I5711-SMJ-AS-000177.dgn

DRAWN BY: S.D. COOPER DATE: 1-20  
 CHECKED BY: T. BEACH DATE: 1-20  
 DESIGN ENGINEER OF RECORD: T. BEACH DATE: 1-20

PLANS PREPARED BY:  
**SE & A**  
 SIMPSON ENGINEERS ASSOCIATES  
 5640 Dillard Drive  
 Suite 200  
 Cary, NC 27518  
 (919) 852-0468  
 (919) 852-0538 (Fax)  
 www.simpsonengr.com  
 LICENSURE NO. C-2521



PROJECT NO. I-5711  
ALAMANCE COUNTY  
 STATION: STA. 27+02.26 -L-

SHEET 2 OF 5

STATE OF NORTH CAROLINA  
 DEPARTMENT OF TRANSPORTATION  
 RALEIGH  
**BRIDGE APPROACH SLAB**  
 RIGHT WIDENING

REVISIONS						SHEET NO.
NO.	BY:	DATE:	NO.	BY:	DATE:	S-71
1			3			TOTAL SHEETS
2			4			89

**DOCUMENT NOT CONSIDERED FINAL  
 UNLESS ALL SIGNATURES COMPLETED**