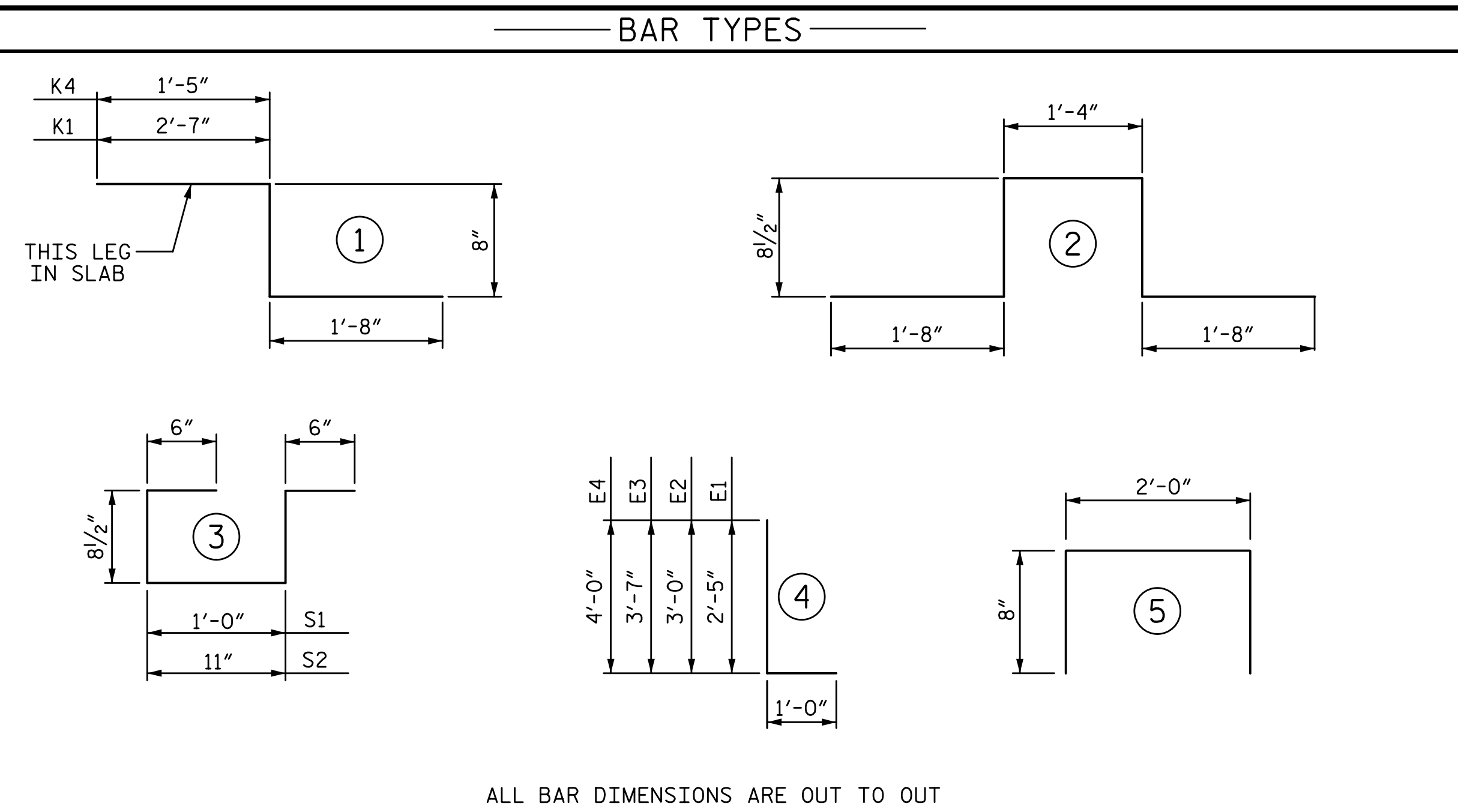


1/14/2020 10:06:24 AM G:\Projects\2017\I-5711\Structures\Drawings\Final\401.15711.SMJ.BM.000177.dgn

BILL OF MATERIAL SPAN A (RIGHT SIDE)						BILL OF MATERIAL SPAN B (RIGHT SIDE)						BILL OF MATERIAL SPAN C (RIGHT SIDE)						BILL OF MATERIAL SPAN D (RIGHT SIDE)					
BAR	NO.	SIZE	TYPE	LENGTH	WEIGHT	BAR	NO.	SIZE	TYPE	LENGTH	WEIGHT	BAR	NO.	SIZE	TYPE	LENGTH	WEIGHT	BAR	NO.	SIZE	TYPE	LENGTH	WEIGHT
*A1	66	#5	STR	32'-2"	2214	*A1	145	#5	STR	32'-2"	4865	*A1	145	#5	STR	32'-2"	4865	*A1	63	#5	STR	32'-2"	2114
A2	66	#5	STR	32'-2"	2214	A2	145	#5	STR	32'-2"	4865	A2	145	#5	STR	32'-2"	4865	A2	63	#5	STR	32'-2"	2114
*A101	2	#5	STR	28'-2"	59	*A301	2	#5	STR	26'-7"	55	*A301	2	#5	STR	26'-7"	55	*A101	2	#5	STR	28'-2"	59
*A102	2	#5	STR	20'-4"	42	*A302	2	#5	STR	18'-8"	39	*A302	2	#5	STR	18'-8"	39	*A102	2	#5	STR	20'-4"	42
*A103	2	#5	STR	12'-5"	26	*A303	2	#5	STR	10'-10"	23	*A303	2	#5	STR	10'-10"	23	*A103	2	#5	STR	12'-5"	26
*A104	2	#5	STR	4'-7"	10	*A304	2	#5	STR	2'-11"	6	*A304	2	#5	STR	2'-11"	6	*A104	2	#5	STR	4'-7"	10
A201	2	#5	STR	28'-2"	59	A401	2	#5	STR	26'-7"	55	A401	2	#5	STR	26'-7"	55	A201	2	#5	STR	28'-2"	59
A202	2	#5	STR	20'-4"	42	A402	2	#5	STR	18'-8"	39	A402	2	#5	STR	18'-8"	39	A202	2	#5	STR	20'-4"	42
A203	2	#5	STR	12'-5"	26	A403	2	#5	STR	10'-10"	23	A403	2	#5	STR	10'-10"	23	A203	2	#5	STR	12'-5"	26
A204	2	#5	STR	4'-7"	10	A404	2	#5	STR	2'-11"	6	A404	2	#5	STR	2'-11"	6	A204	2	#5	STR	4'-7"	10
B1	50	#5	STR	35'-0"	1825	B3	100	#5	STR	38'-3"	3989	B3	100	#5	STR	38'-3"	3989	B5	50	#5	STR	33'-6"	1747
*B2	44	#4	STR	18'-6"	544	*B4	66	#4	STR	26'-2"	1154	*B4	66	#4	STR	26'-2"	1154	*B6	44	#4	STR	17'-9"	522
*B7	12	#4	STR	18'-6"	148	*B8	12	#4	STR	27'-1"	217	*B8	12	#4	STR	27'-1"	217	*B10	12	#4	STR	17'-9"	142
*D1	70	#6	STR	4'-6"	473	*D1	148	#6	STR	4'-6"	1000	*D1	148	#6	STR	4'-6"	1000	*D2	66	#6	STR	4'-6"	446
*D2	70	#6	STR	3'-4"	350	*D2	148	#6	STR	3'-4"	741	*D2	148	#6	STR	3'-4"	741	*D2	66	#6	STR	3'-4"	330
*E1	2	#7	4	3'-5"	14	*G1	2	#5	STR	32'-2"	67	*G1	2	#5	STR	32'-2"	67	*E1	2	#7	4	3'-5"	14
*E2	2	#7	4	4'-0"	16	*G2	74	#4	STR	6'-3"	309	*G2	74	#4	STR	6'-3"	309	*E2	2	#7	4	4'-0"	16
*E3	2	#7	4	4'-7"	19	*K1	4	#5	1	4'-11"	21	*K1	4	#5	1	4'-11"	21	*E3	2	#7	4	4'-7"	19
*E4	2	#7	4	5'-0"	20	*K2	12	#5	2	6'-1"	76	*K2	12	#5	2	6'-1"	76	*E4	2	#7	4	5'-0"	20
*F1	2	#6	STR	3'-8"	11	*K3	16	#5	STR	6'-10"	114	*K3	16	#5	STR	6'-10"	114	*F1	2	#6	STR	3'-8"	11
*F2	2	#6	STR	1'-8"	5	*K4	4	#5	1	3'-9"	16	*K4	4	#5	1	3'-9"	16	*F2	2	#6	STR	1'-8"	5
*F3	2	#6	STR	3'-3"	10	*S2	48	#4	3	3'-4"	107	*S2	48	#4	3	3'-4"	107	*F3	2	#6	STR	3'-3"	10
*F4	4	#6	STR	3'-5"	21	*U1	22	#4	5	3'-4"	49	*U1	22	#4	5	3'-4"	49	*F4	4	#6	STR	3'-5"	21
*G1	2	#5	STR	32'-2"	67													*G1	2	#5	STR	32'-2"	67
*G2	35	#4	STR	6'-3"	146													*G2	34	#4	STR	6'-3"	142
*K1	4	#5	1	4'-11"	21	REINFORCING STEEL				9091 LB		REINFORCING STEEL				9091 LB		*K1	4	#5	1	4'-11"	21
*K2	12	#5	2	6'-1"	76	EPOXY COATED						EPOXY COATED						*K2	12	#5	2	6'-1"	76
K3	16	#5	STR	6'-10"	114	REINFORCING STEEL				8822 LB		REINFORCING STEEL				8822 LB		K3	16	#5	STR	6'-10"	114
*K4	4	#5	1	3'-9"	16													*K4	4	#5	1	3'-9"	16
*S1	24	#4	3	3'-5"	55													*S1	24	#4	3	3'-5"	55
*S2	24	#4	3	3'-4"	53													*S2	24	#4	3	3'-4"	53
*U1	10	#4	5	3'-4"	22													*U1	10	#4	5	3'-4"	22
REINFORCING STEEL					4290 LB													REINFORCING STEEL					4112 LB
EPOXY COATED																		EPOXY COATED					
REINFORCING STEEL					4438 LB													REINFORCING STEEL					4259 LB



SUPERSTRUCTURE REINFORCING STEEL LENGTHS ARE BASED ON THE FOLLOWING MINIMUM SPLICE LENGTHS

BAR SIZE	SUPERSTRUCTURE EXCEPT APPROACH SLABS, PARAPET, AND BARRIER RAIL		APPROACH SLABS		PARAPET AND BARRIER RAIL
	EPOXY COATED	UNCOATED	EPOXY COATED	UNCOATED	
#4	2'-0"	1'-9"	2'-0"	1'-9"	2'-9"
#5	2'-6"	2'-2"	2'-6"	2'-2"	3'-5"
#6	3'-0"	2'-7"	3'-10"	2'-7"	4'-4"
#7	5'-3"	3'-6"			
#8	6'-10"	4'-7"			

GROOVING BRIDGE FLOORS

APPROACH SLABS	592	SQ. FT.
BRIDGE DECK	5,920	SQ. FT.
TOTAL	6,512	SQ. FT.

CLASS AA CONCRETE BREAKDOWN

	SPAN A	SPAN B	SPAN C	SPAN D
	CY	CY	CY	CY
DECK	32.4	66.3	66.3	30.1
CLOSURE POUR	3.2	6.7	6.7	3.1
END POSTS	1.2			1.2
SIDEWALK	6.9	14.6	14.6	6.6
TOTAL	43.7	87.6	87.6	41.0

PPC OVERLAY QUANTITIES

	QUANTITY
SHOTBLASTING BRIDGE DECK	770.0 SY
PPC MATERIALS	21.4 CY
PLACING AND FINISHING PPC OVERLAY	770.0 SY

PPC OVERLAY QUANTITIES INCLUDE APPROACH SLABS. FOR LIMITS OF APPROACH SLAB PPC OVERLAY, SEE BRIDGE APPROACH SLAB SHEET 2 OF 5

PROJECT NO. I-5711
ALAMANCE COUNTY
 STATION: STA. 27+02.26 -L-

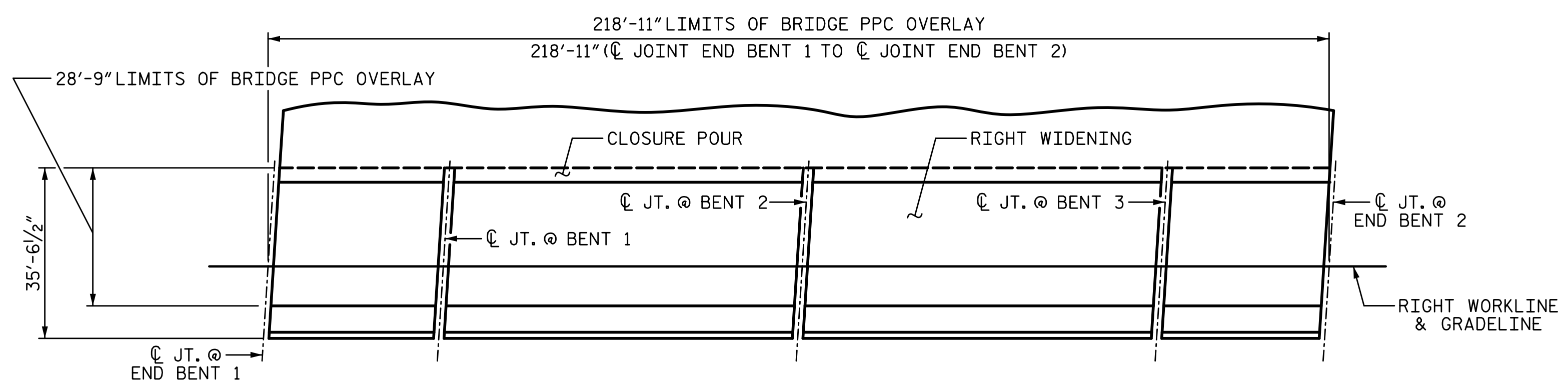
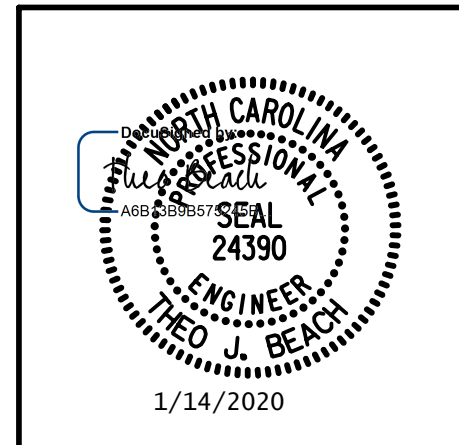
SHEET 2 OF 2

STATE OF NORTH CAROLINA
 DEPARTMENT OF TRANSPORTATION
 RALEIGH
 SUPERSTRUCTURE
BILL OF MATERIAL
 RIGHT WIDENING

REVISIONS				SHEET NO.
NO.	BY:	DATE:	NO.	DATE:
1			3	
2			4	

TOTAL SHEETS: 89

PLANS PREPARED BY:
S&A
 IMPSON ENGINEERS ASSOCIATES
 5640 Dillard Drive
 Suite 200
 Cary, NC 27518
 (919) 852-0468
 (919) 852-0538 (Fax)
 www.slmpsonengr.com
 LICENSURE NO. C-2521



LAYOUT FOR COMPUTING REINFORCED CONCRETE DECK SLAB AREA
 (SQ. FT. = 7781)

DRAWN BY: S.D. COOPER DATE: 1-20
 CHECKED BY: T. BEACH DATE: 1-20
 DESIGN ENGINEER OF RECORD: T. BEACH DATE: 1-20

DOCUMENT NOT CONSIDERED FINAL UNLESS ALL SIGNATURES COMPLETED