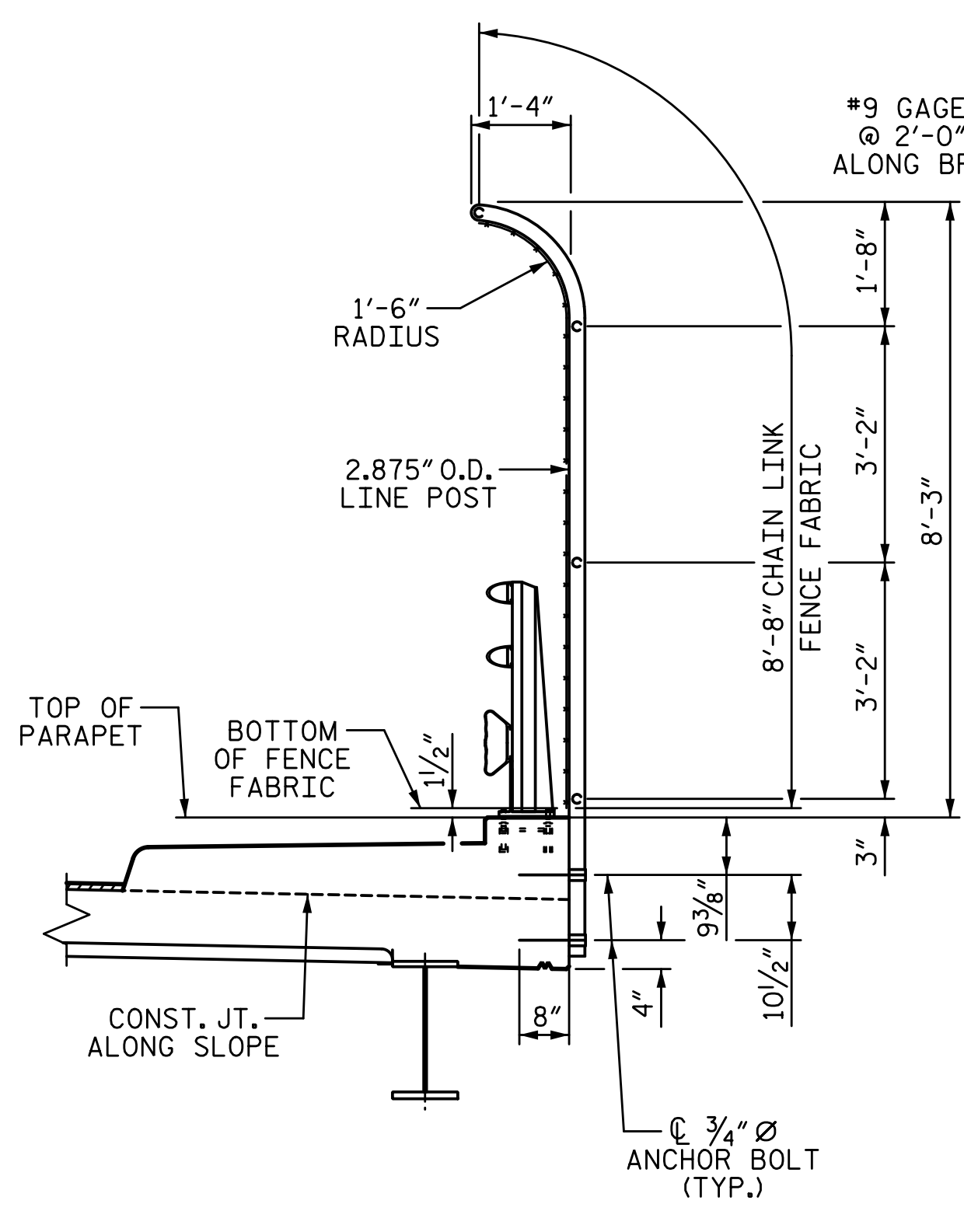
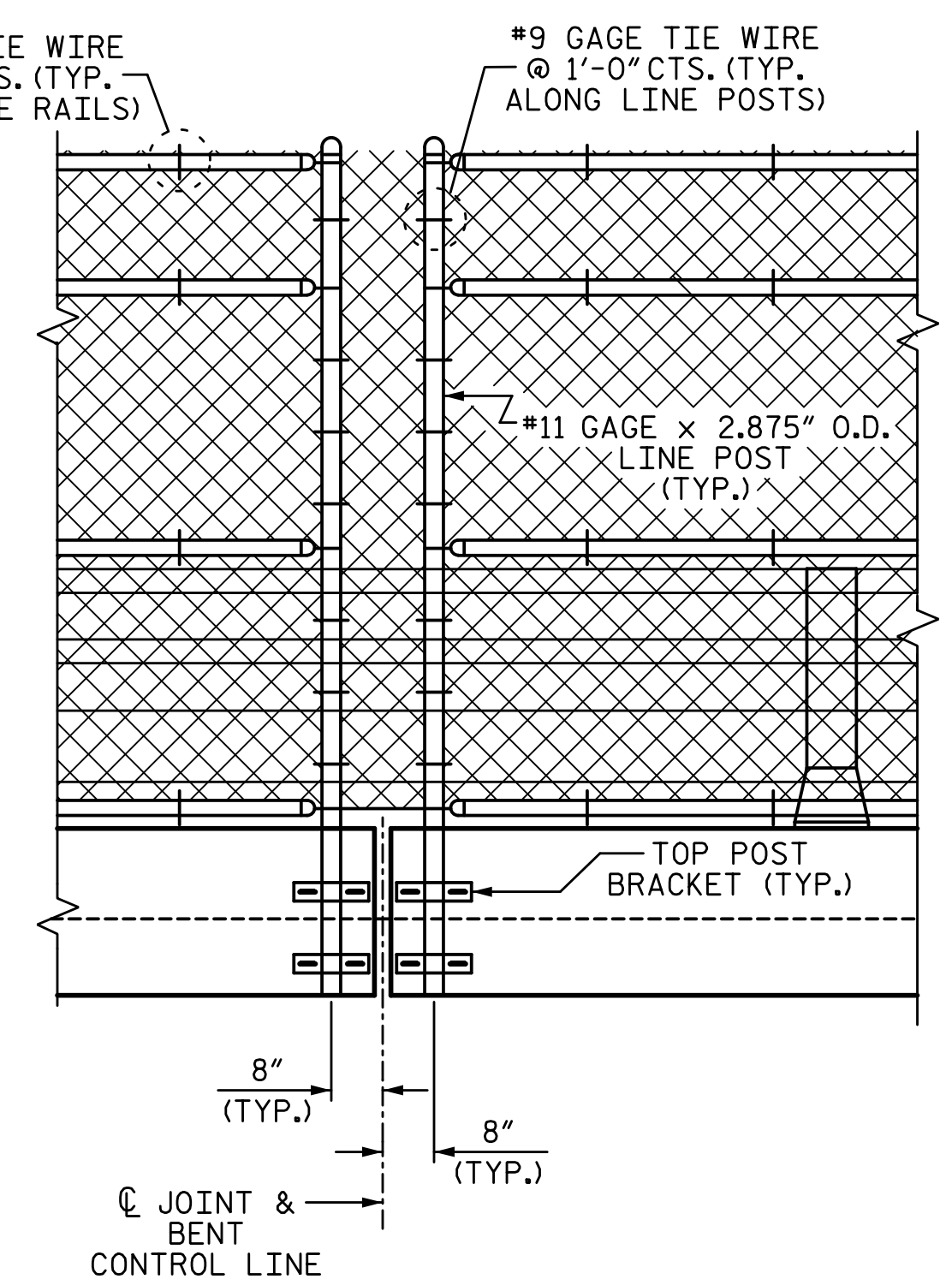


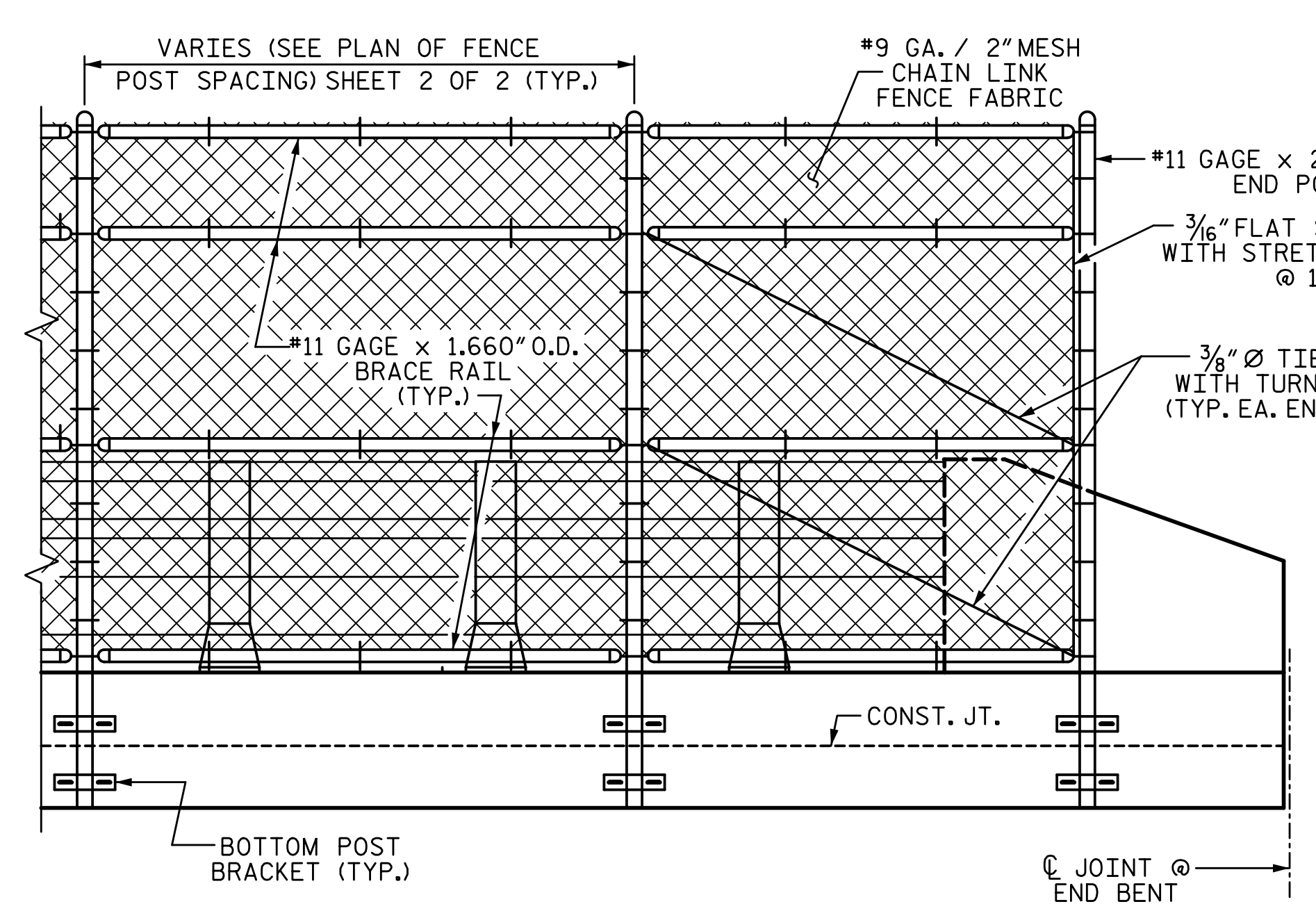
1/14/2020 10:06:23 AM G:\Projects\2017\I-5711\Structures\Drawings\Final\401-I5711-SMJ-BMCLF_000177.dgn



SECTION THRU FENCE
(RIGHT SIDE SHOWN, LEFT SIDE SIMILAR)



PARTIAL ELEVATION
(RIGHT SIDE SHOWN, LEFT SIDE SIMILAR)



NOTES:

FOR BRIDGE MOUNTED CHAIN LINK FENCE, SEE SPECIAL PROVISIONS.

MATERIAL FOR ANCHOR BOLTS SHALL BE TYPE 304 STAINLESS STEEL WITH A MINIMUM 9000 PSI ULTIMATE STRENGTH. NUTS AND WASHERS SHALL BE TYPE 304 STAINLESS STEEL. ANCHOR BOLTS SHALL BE EMBEDDED AS PER ADHESIVE BONDING SYSTEM MANUFACTURER SPECIFICATIONS. NUTS SHALL BE AMERICAN STANDARD FINISHED HEXAGON THICK NUTS, CLASS 2B THREADS.

FOR SETTING ANCHOR BOLTS, THE CONTRACTOR SHALL USE AN ADHESIVE BONDING SYSTEM. SEE SECTION 420-13 OF THE STANDARD SPECIFICATIONS FOR ADHESIVELY ANCHORED ANCHOR BOLTS OR DOWELS. LEVEL ONE FIELD TESTING OF BONDING SYSTEM IS REQUIRED.

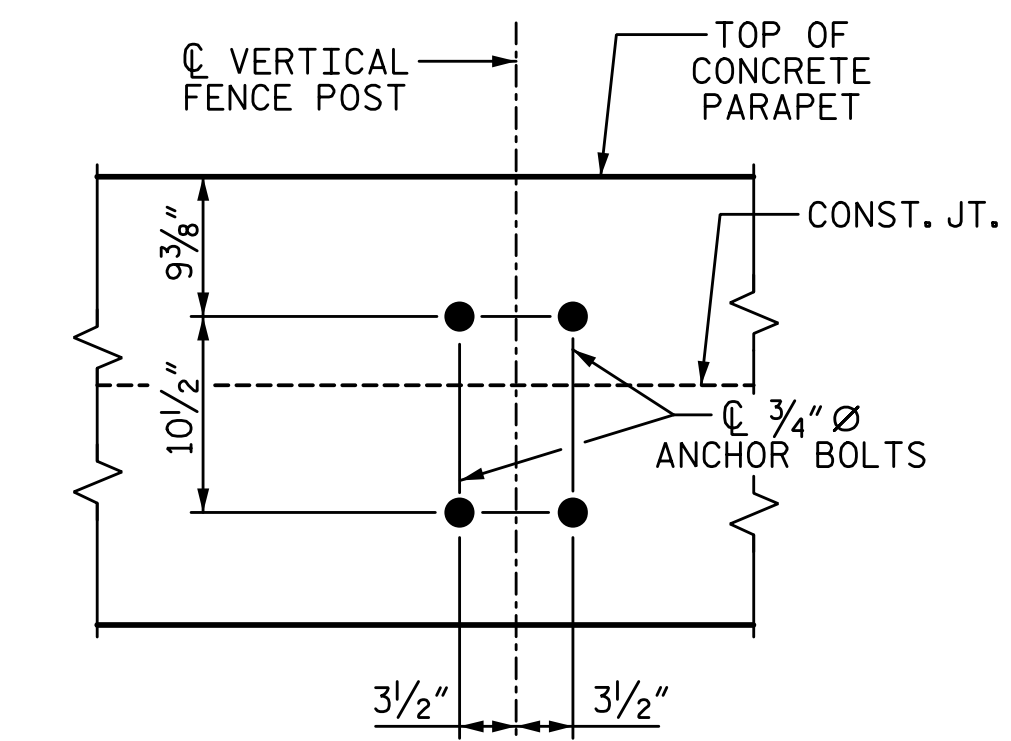
ALL FENCE MATERIAL SHALL MEET THE REQUIREMENTS OF SECTION 1050 OF THE STANDARD SPECIFICATIONS, GALVANIZE ALL STEEL PARTS AND HARDWARE IN ACCORDANCE WITH ARTICLE 1076 OF THE STANDARD SPECIFICATIONS.

FENCE POST LOCATIONS SHALL BE SHIFTED, AS NECESSARY, TO MAINTAIN 1'-0\"/>

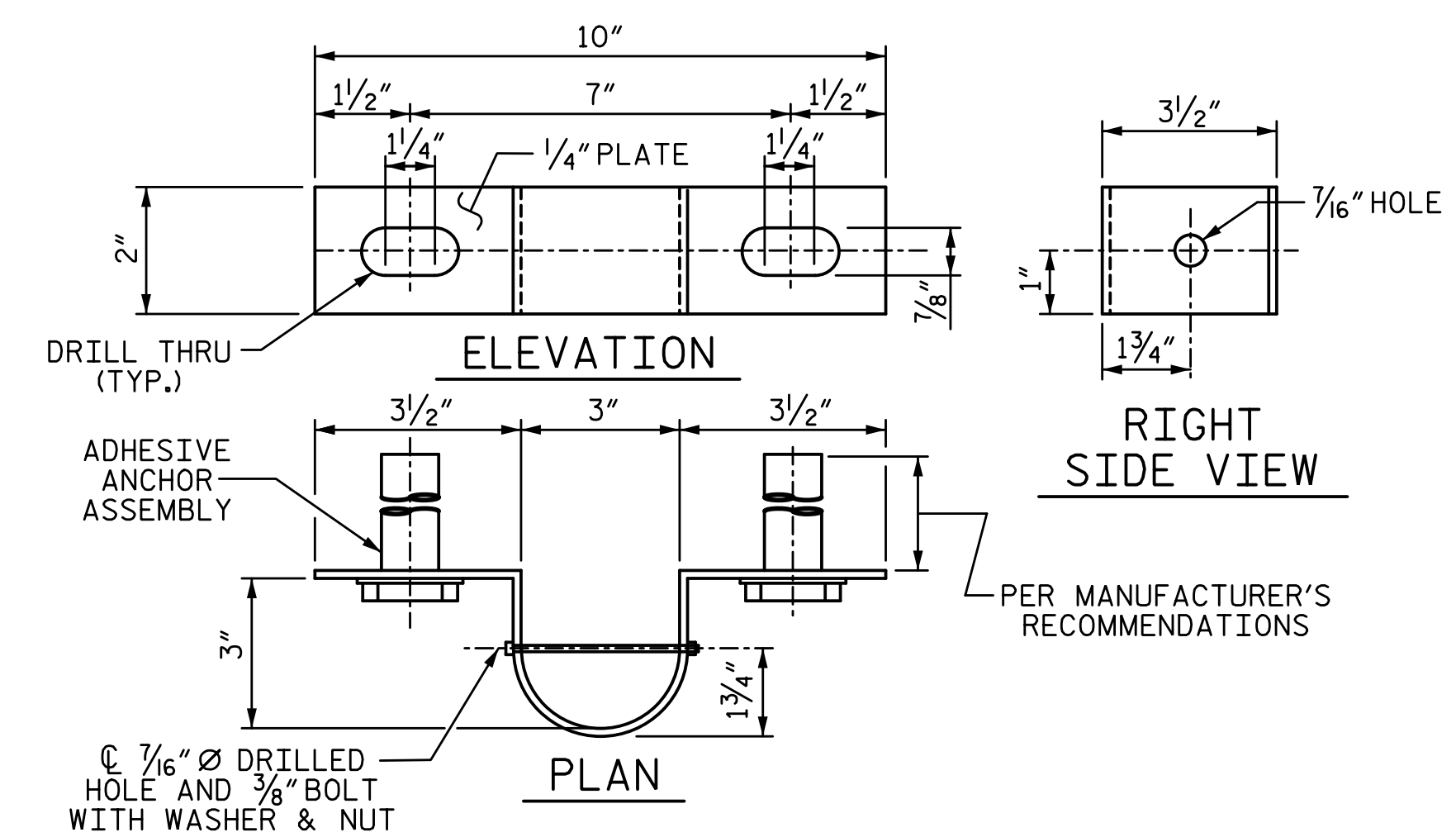
WELDING SHALL BE DONE IN ACCORDANCE WITH ARTICLE 1072-18 OF STANDARD SPECIFICATIONS.

ADHESIVE BONDING SYSTEM SHALL HAVE MINIMUM PULLOUT STRENGTH OF 10 KIPS. THE ADHESIVE BONDING SYSTEM SHALL BE CHOSEN FROM THOSE ON THE NCDOT APPROVED PRODUCTS LIST.

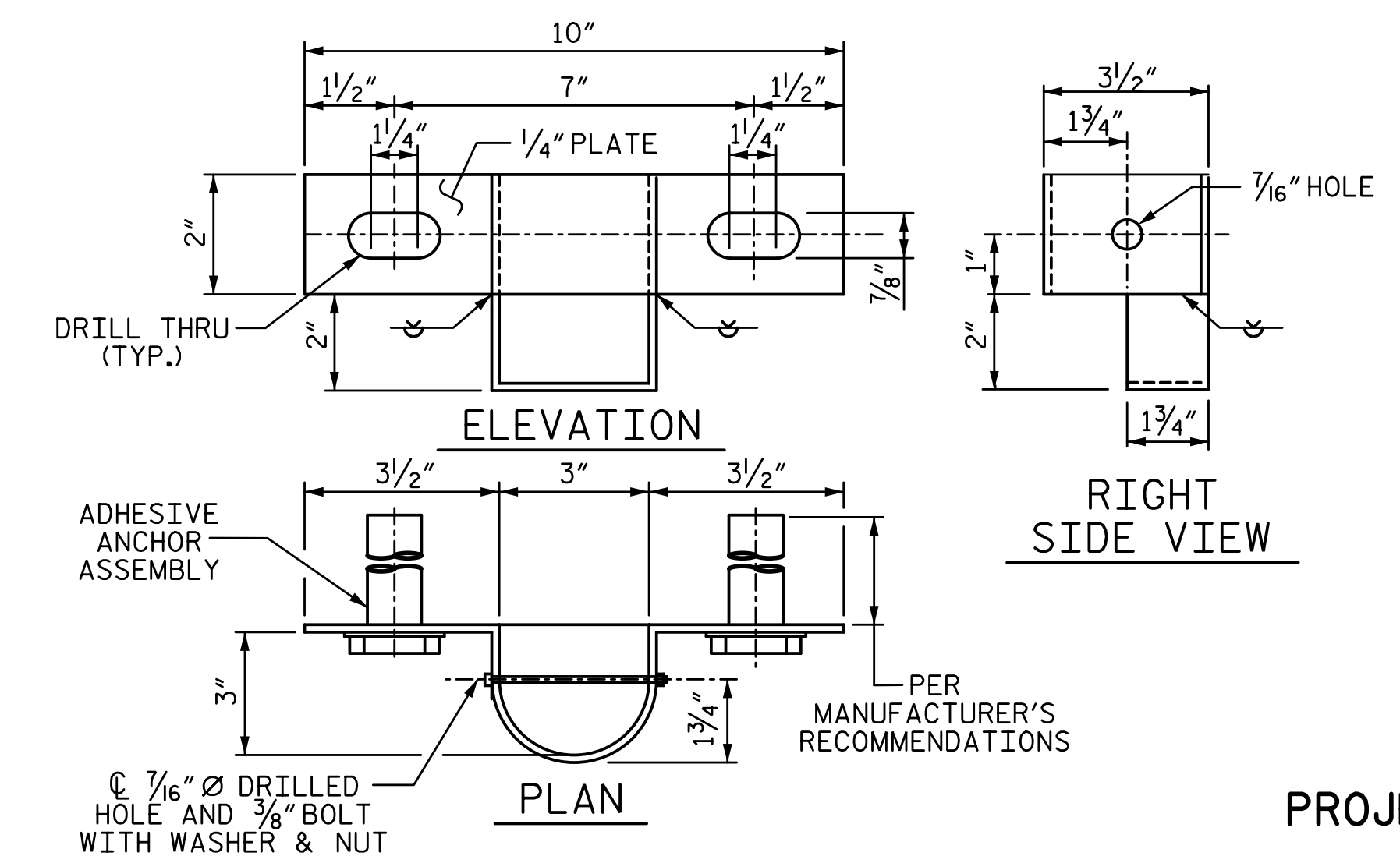
104\"/>



BOLT SETTING DETAIL



TOP POST BRACKET



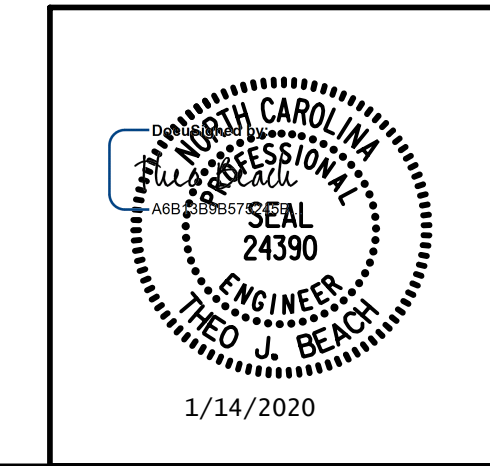
BOTTOM POST BRACKET

PROJECT NO. I-5711
ALAMANCE COUNTY
 STATION: STA. 27+02.26 -L-

SHEET 1 OF 2

DRAWN BY: S.D. COOPER	DATE: 1-20
CHECKED BY: T. BEACH	DATE: 1-20
DESIGN ENGINEER OF RECORD: T. BEACH	DATE: 1-20

PLANS PREPARED BY:
SE & A
 IMPSON ENGINEERS ASSOCIATES
 5640 Dillard Drive
 Suite 200
 Cary, NC 27518
 (919) 852-0468
 (919) 852-0538 (Fax)
 www.slmpsonengr.com
 LICENSURE NO. C-2521



STATE OF NORTH CAROLINA DEPARTMENT OF TRANSPORTATION RALEIGH SUPERSTRUCTURE BRIDGE MOUNTED CHAIN LINK FENCE DETAILS LEFT & RIGHT WIDENING					
REVISIONS					
NO.	BY:	DATE:	NO.	BY:	DATE:
1			3		
2			4		
					SHEET NO. S-38
					TOTAL SHEETS 89

**DOCUMENT NOT CONSIDERED FINAL
 UNLESS ALL SIGNATURES COMPLETED**