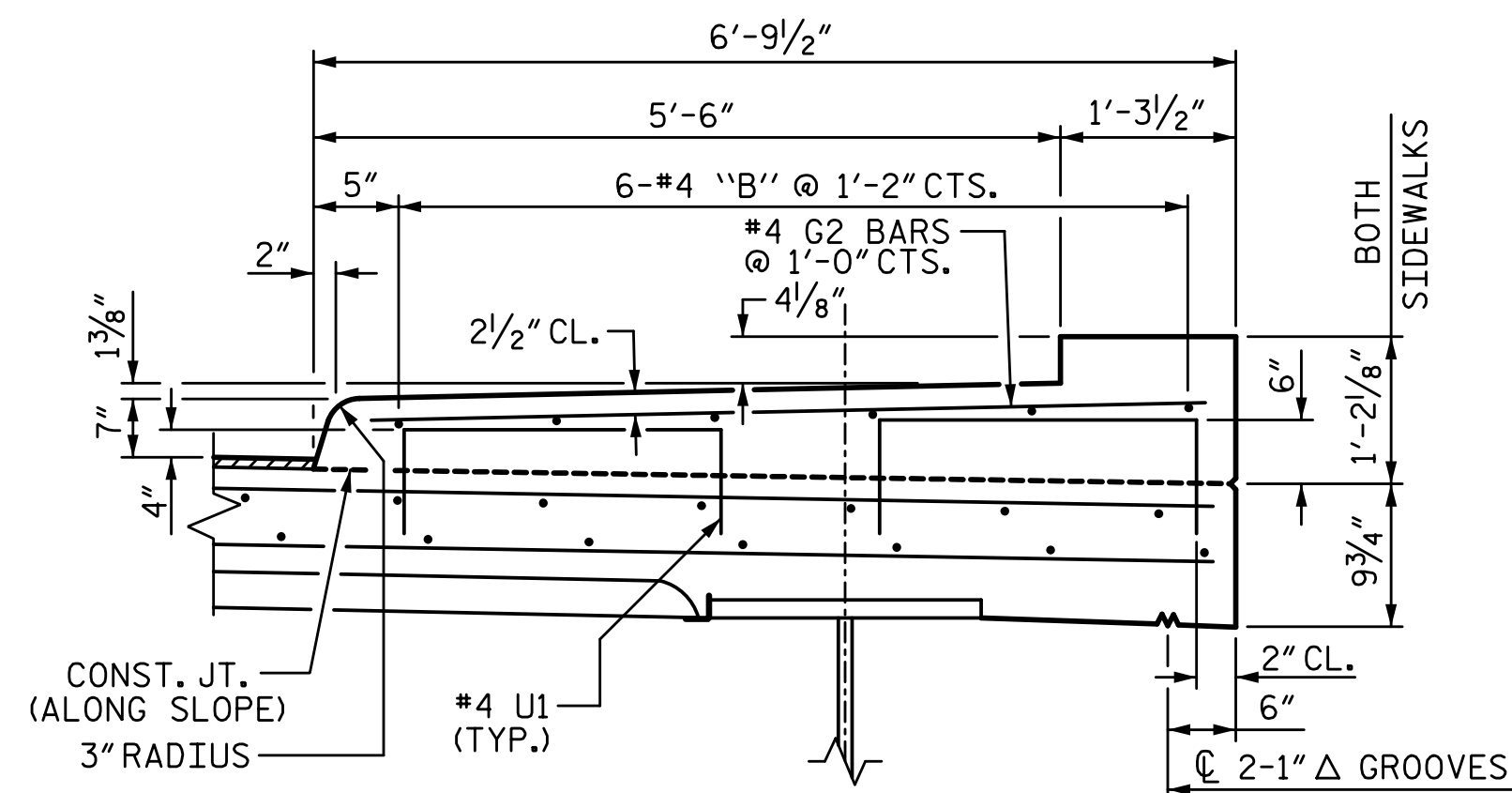
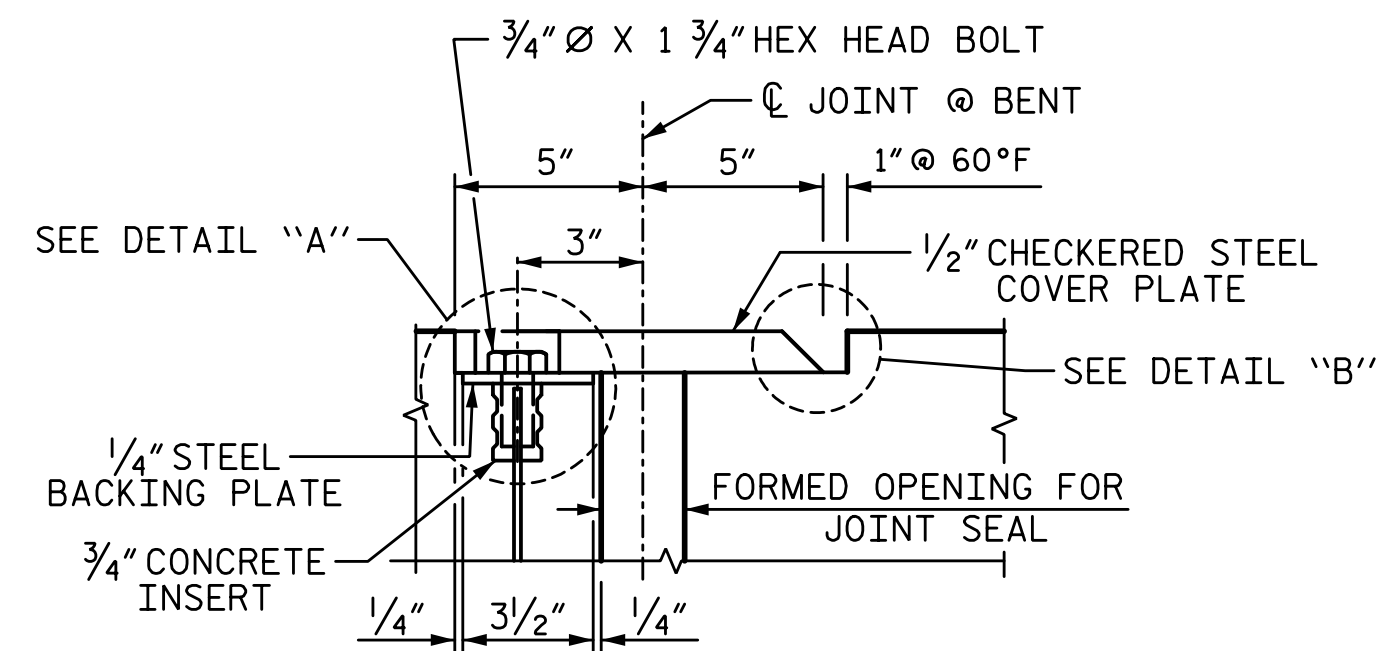


PLAN OF FOAM JOINT SEAL WITH COVER PLATE

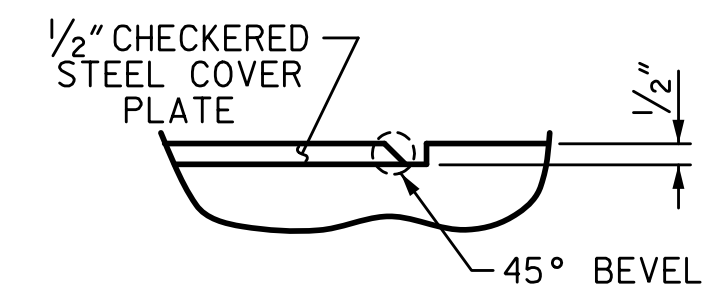
AT BENT 1, 2 AND 3



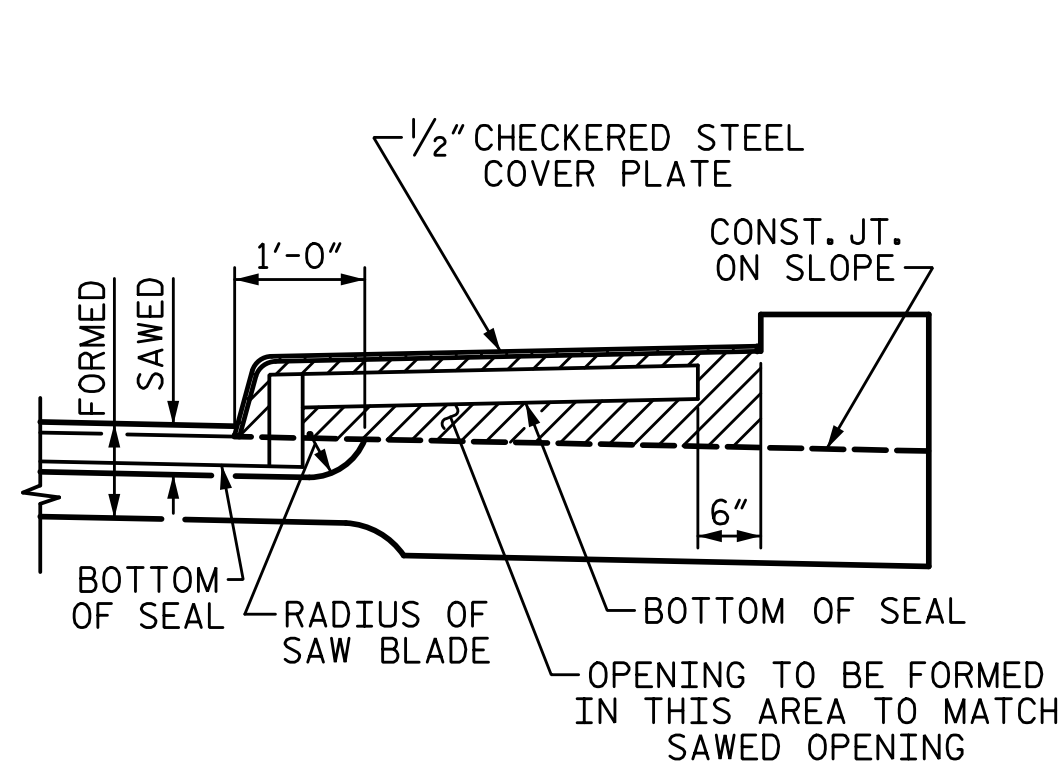
SECTION THRU SIDEWALK



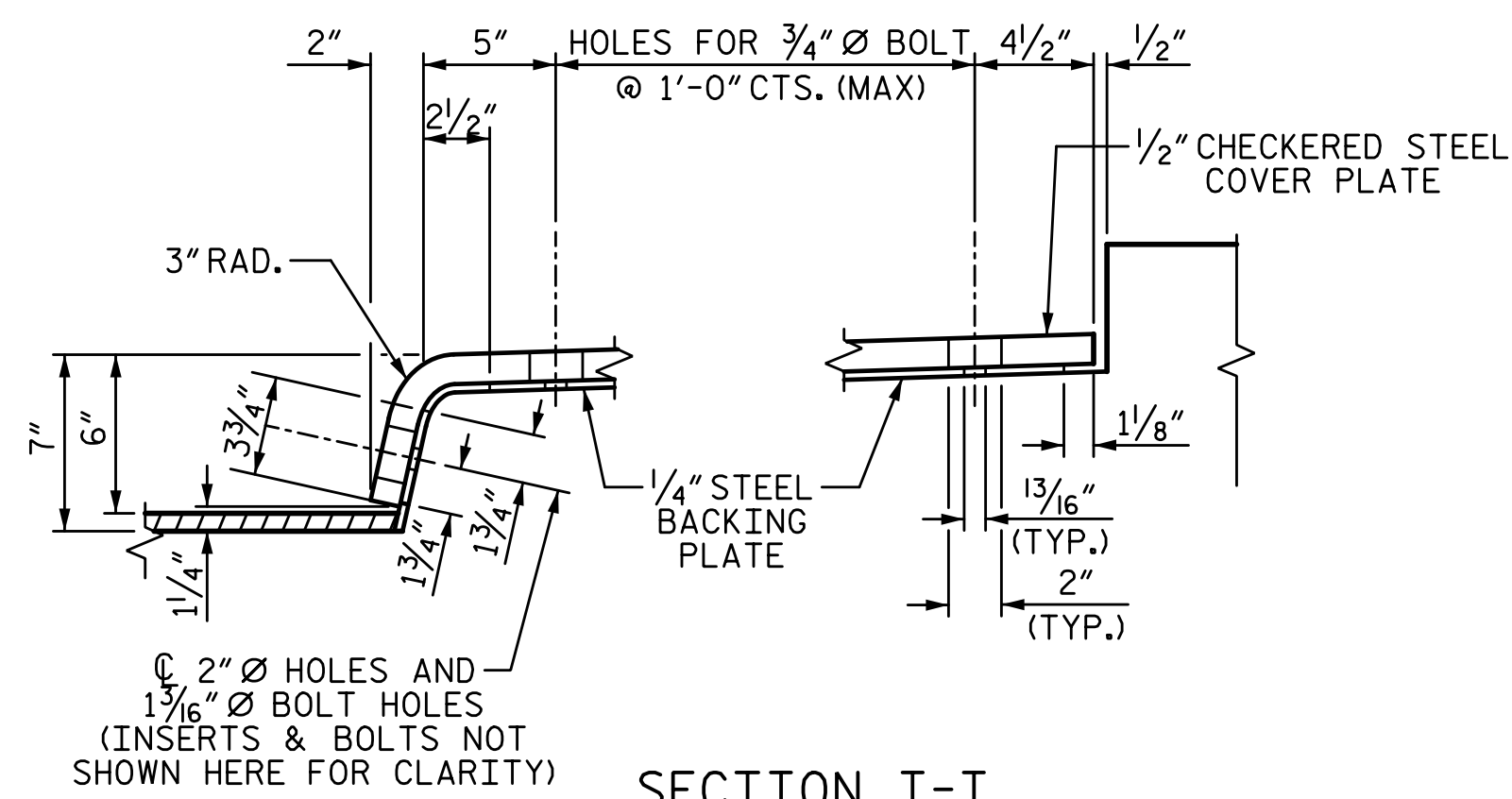
SECTION K-K



DETAIL "B"



SECTION H-H



SECTION I-I

SIDEWALK COVER PLATE DETAILS FOR FOAM JOINT SEALS @ BENTS

NOTES:

THE STEEL PLATES SHALL CONFORM TO AASHTO M270 GRADE 36 OR APPROVED EQUAL. AFTER FABRICATION, THE PLATES SHALL BE COMMERCIALY BLAST CLEANED AND COATED WITH A MINIMUM THICKNESS OF 4 MILS (DRY) OF ZINC-RICH PAINT, GALVANIZED OR METALLIZED TO A MINIMUM THICKNESS OF 6 MILS IN ACCORDANCE WITH THE STANDARD SPECIFICATIONS. FOR THERMAL SPRAYED COATINGS (METALLIZATION), SEE SPECIAL PROVISIONS.

THE 3/4" DIAMETER HEX HEAD BOLTS SHALL CONFORM TO ASTM F593 ALLOY 304 STAINLESS STEEL.

THE 3/4" CONCRETE INSERTS SHALL BE CLOSED-END FERRULES WITH LOOPED WIRE STRUTS ATTACHED TO THEM. THE INSERTS SHALL CONFORM TO AASHTO M169, GRADE 12L14, AND SHALL HAVE A TENSILE WORKING LOAD CAPACITY OF 3000 LBS.

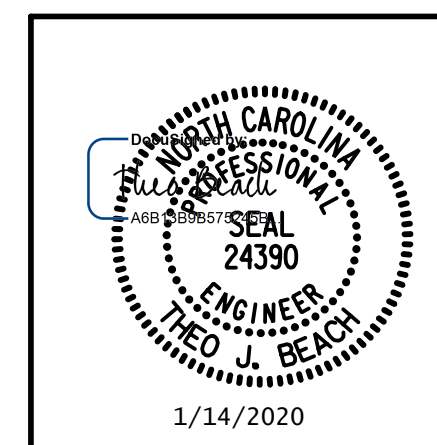
NO SEPARATE PAYMENT WILL BE MADE FOR FURNISHING AND INSTALLING THE COVER PLATE. THE ENTIRE COST OF THIS WORK SHALL BE INCLUDED IN THE LUMP SUM PRICE FOR "FOAM JOINT SEALS".

1/14/2020 10:06:21 AM G:\Projects\2017\I-5711\Structures\Drawings\Final\401-I5711-SMJ_SW_000177.dgn

DRAWN BY: S.D. COOPER	DATE: 1-20
CHECKED BY: T. BEACH	DATE: 1-20
DESIGN ENGINEER OF RECORD: T. BEACH	DATE: 1-20

PLANS PREPARED BY:

SEMPSON ENGINEERS & ASSOCIATES
 5640 Dillard Drive
 Suite 200
 Cary, NC 27518
 (919) 852-0468
 (919) 852-0538 (Fax)
 www.simpsonengr.com
 LICENSURE NO. C-2521



PROJECT NO. I-5711
 ALAMANCE COUNTY
 STATION: STA. 27+02.26 -L-

SHEET 3 OF 3

STATE OF NORTH CAROLINA
 DEPARTMENT OF TRANSPORTATION
 RALEIGH
 SUPERSTRUCTURE

SIDEWALK DETAILS

LEFT & RIGHT WIDENING

REVISIONS

NO.	BY:	DATE:	NO.	BY:	DATE:	SHEET NO.
1			3			S-30
2			4			TOTAL SHEETS 89

DOCUMENT NOT CONSIDERED FINAL
 UNLESS ALL SIGNATURES COMPLETED