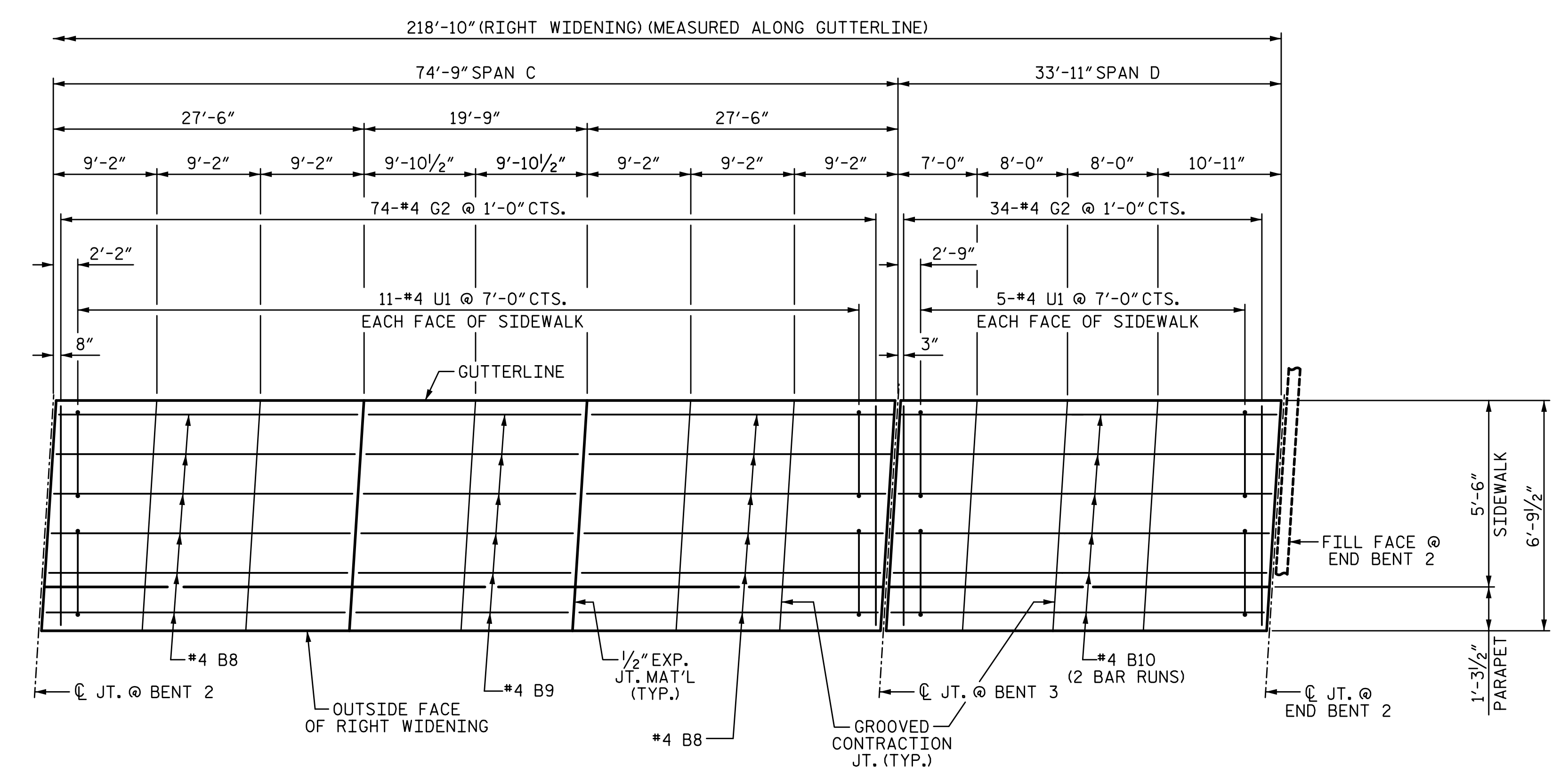


PLAN OF SIDEWALK
SPAN A & B
(END POSTS NOT SHOWN FOR CLARITY)



PLAN OF SIDEWALK
SPAN C & D
(END POSTS NOT SHOWN FOR CLARITY)

NOTES:

- SIDEWALK IN EACH SPAN SHALL NOT BE CAST UNTIL ALL SLAB CONCRETE IN THE SPAN HAS BEEN CAST AND HAS REACHED A MINIMUM COMPRESSIVE STRENGTH OF 3000 PSI.
- ALL REINFORCING STEEL IN SIDEWALK SHALL BE EPOXY COATED.
- GROOVED CONTRACTION JOINTS, 1/2" IN DEPTH, SHALL BE TOOLED IN ALL EXPOSED FACES OF THE SIDEWALK IN ACCORDANCE WITH ARTICLE 825-10(B) OF THE STANDARD SPECIFICATIONS.
- FOR SIDEWALK REINFORCING STEEL AND CONCRETE QUANTITIES SEE SUPERSTRUCTURE "BILL OF MATERIAL" SHEET.
- SEE APPROACH SLAB SHEETS FOR SIDEWALK ON APPROACH SLABS.
- THE #4U1 BARS MAY BE PUSHED INTO GREEN CONCRETE AFTER SPAN HAS BEEN SCREEDED OFF.

1/14/2020 10:06:21 AM G:\Projects\2017\I-5711\Structures\Drawings\Final\401-I5711-SMJ_SW_000177.dgn

PROJECT NO. I-5711
ALAMANCE COUNTY
STATION: STA. 27+02.26 -L-

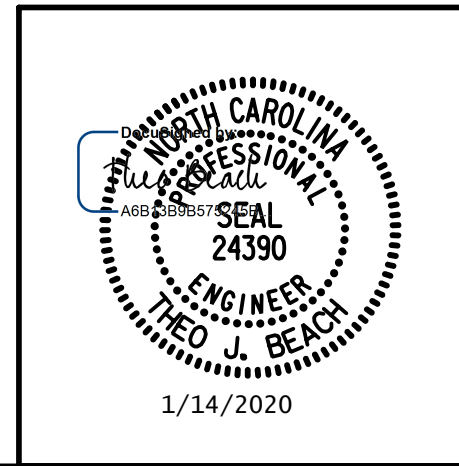
SHEET 2 OF 3

STATE OF NORTH CAROLINA
DEPARTMENT OF TRANSPORTATION
RALEIGH
SUPERSTRUCTURE

SIDEWALK DETAILS

RIGHT WIDENING

PLANS PREPARED BY:
SE & A
SIMPSON ENGINEERS & ASSOCIATES
5640 Dillard Drive
Suite 200
Cary, NC 27518
(919) 852-0468
(919) 852-0598 (Fax)
www.simpsonengr.com
LICENSURE NO. C-2521



| REVISIONS | | | | | | SHEET NO. |
|-----------|-----|-------|-----|-----|-------|--------------|
| NO. | BY: | DATE: | NO. | BY: | DATE: | S-29 |
| 1 | | | 3 | | | TOTAL SHEETS |
| 2 | | | 4 | | | 89 |

**DOCUMENT NOT CONSIDERED FINAL
UNLESS ALL SIGNATURES COMPLETED**

DRAWN BY: S.D. COOPER DATE: 1-20
CHECKED BY: T. BEACH DATE: 1-20
DESIGN ENGINEER OF RECORD: T. BEACH DATE: 1-20