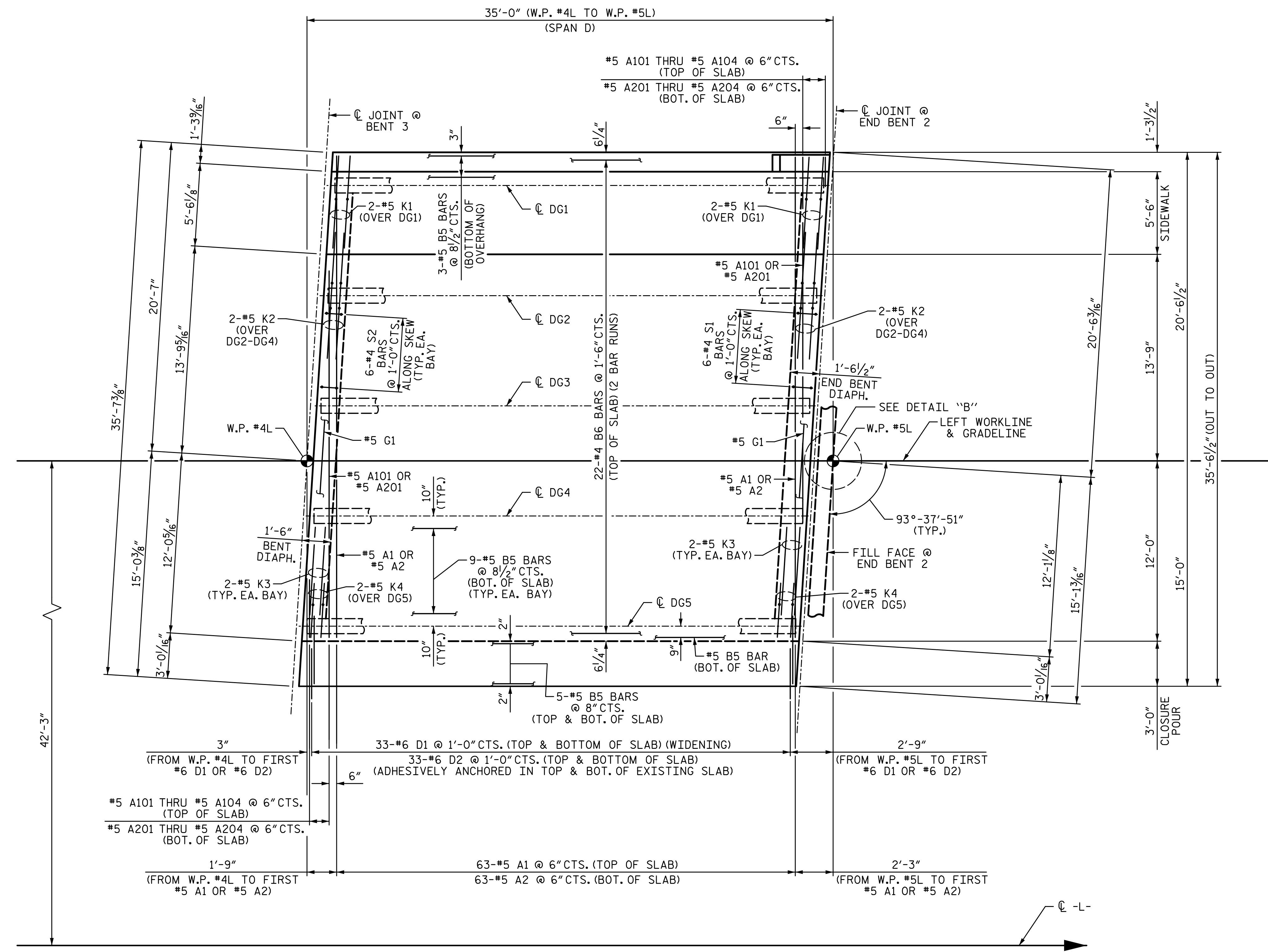
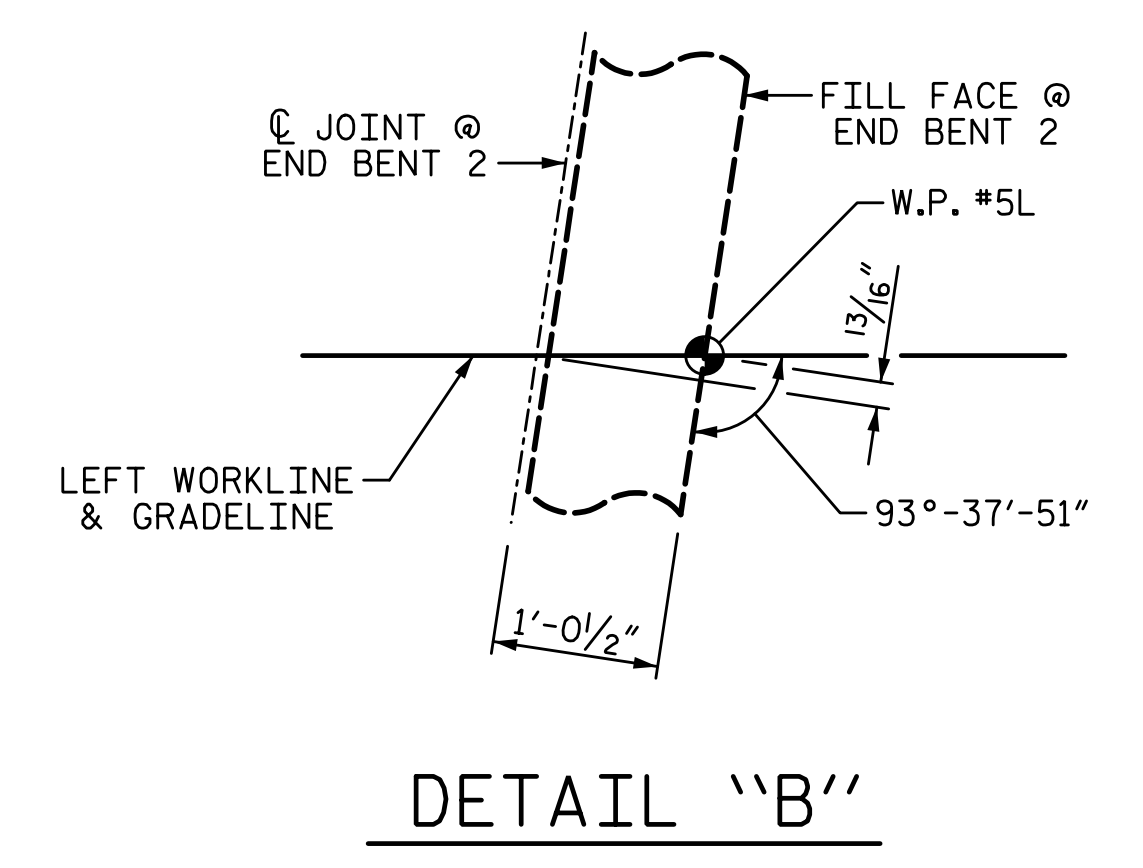


**NOTES:**  
 FOR SIDEWALK REINFORCING STEEL, SEE "SIDEWALK DETAILS" SHEETS.



**PLAN OF SPAN D**

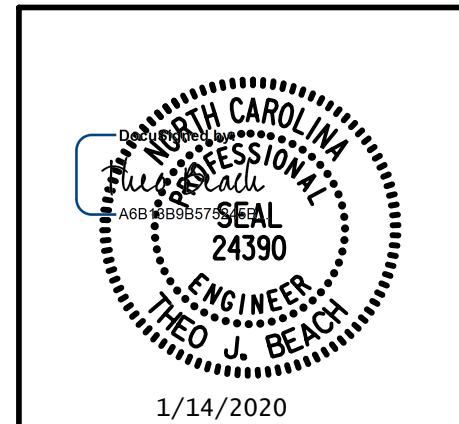


**DETAIL "B"**

PROJECT NO. I-5711  
ALAMANCE COUNTY  
 STATION: STA. 27+02.26 -L-

SHEET 3 OF 6

STATE OF NORTH CAROLINA  
 DEPARTMENT OF TRANSPORTATION  
 RALEIGH  
 SUPERSTRUCTURE  
**PLAN OF SPAN  
 (SPAN D)**  
 LEFT WIDENING



PLANS PREPARED BY:  
**SE & A**  
 SIMPSON ENGINEERS & ASSOCIATES  
 5640 Dillard Drive  
 Suite 200  
 Cary, NC 27518  
 (919) 852-0468  
 (919) 852-0538 (Fax)  
 www.simpsonengr.com  
 LICENSURE NO. C-2521

REVISIONS						SHEET NO.
NO.	BY:	DATE:	NO.	BY:	DATE:	S-13
1			3			TOTAL SHEETS
2			4			89

**DOCUMENT NOT CONSIDERED FINAL  
 UNLESS ALL SIGNATURES COMPLETED**

1/14/2020 10:06:16 AM G:\Projects\2017\I-5711\Structures\Drawings\Final\401-I5711-SMJ\_PS\_000177.dgn

DRAWN BY: R. SEALEY DATE: 1-20  
 CHECKED BY: T. BEACH DATE: 1-20  
 DESIGN ENGINEER OF RECORD: T. BEACH DATE: 1-20