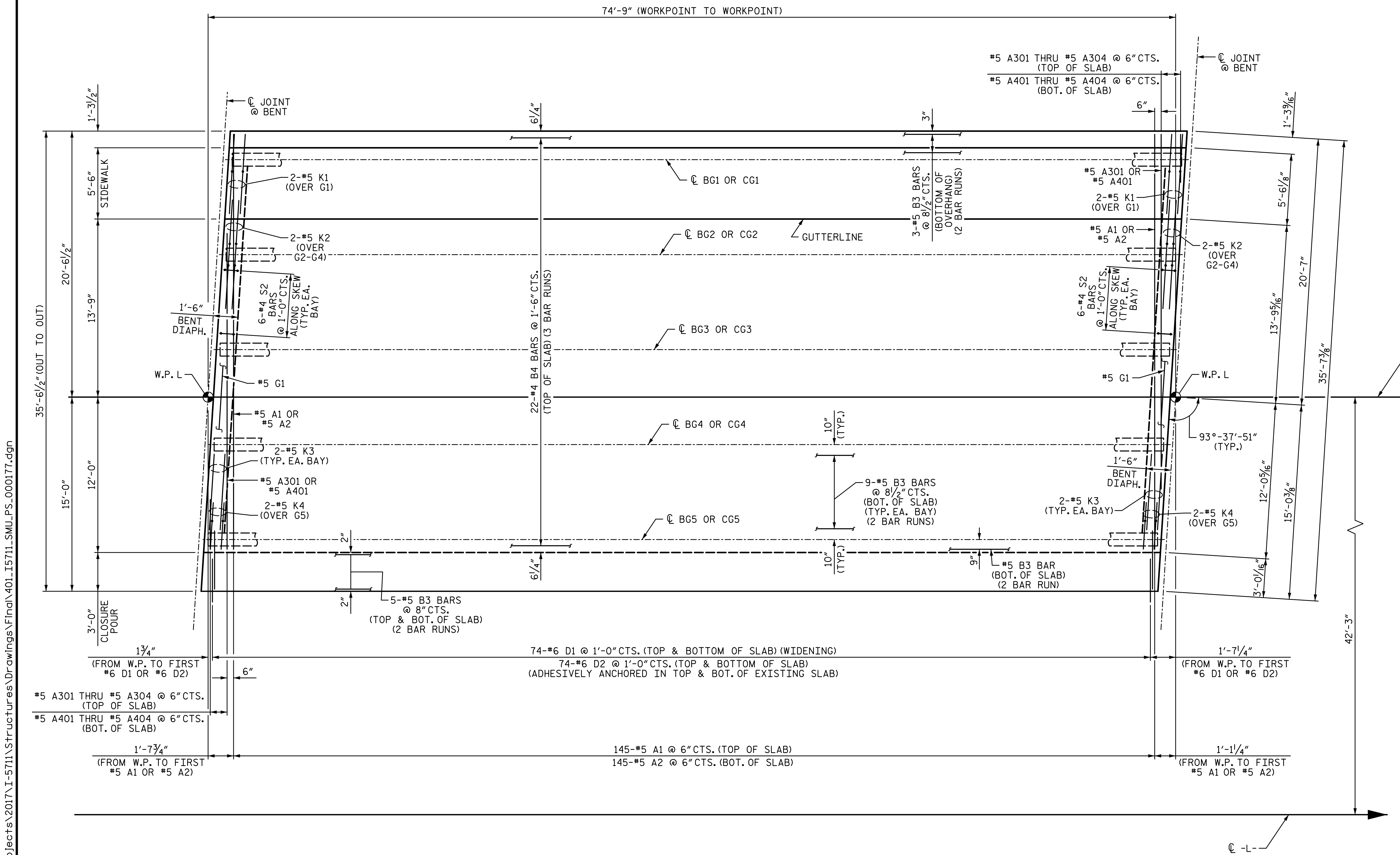


NOTES:
FOR SIDEWALK REINFORCING STEEL, SEE "SIDEWALK DETAILS"
SHEETS.



PLAN OF SPANS B OR C

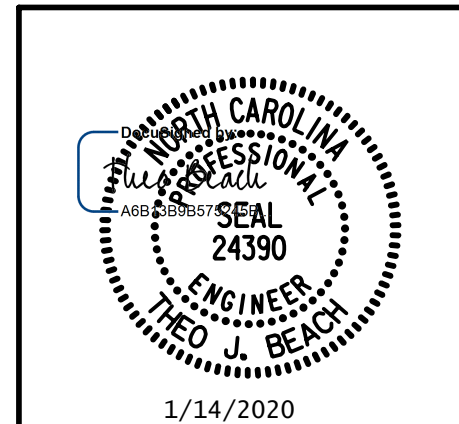
PROJECT NO. I-5711
ALAMANCE COUNTY
STATION: STA. 27+02.26 -L-

SHEET 2 OF 6

STATE OF NORTH CAROLINA
DEPARTMENT OF TRANSPORTATION
RALEIGH
SUPERSTRUCTURE

PLAN OF SPANS
(SPANS B OR C)

LEFT WIDENING



PLANS PREPARED BY:
SEA & ASSOCIATES
5640 Dillard Drive
Suite 200
Cary, NC 27518
(919) 852-0468
(919) 852-0538 (Fax)
www.simpsonengr.com
LICENSURE NO. C-2521

REVISIONS						SHEET NO.
NO.	BY:	DATE:	NO.	BY:	DATE:	S-12
1			3			TOTAL SHEETS
2			4			89

**DOCUMENT NOT CONSIDERED FINAL
UNLESS ALL SIGNATURES COMPLETED**

DRAWN BY: <u>R. SEALEY</u>	DATE: <u>1-20</u>
CHECKED BY: <u>T. BEACH</u>	DATE: <u>1-20</u>
DESIGN ENGINEER OF RECORD: <u>T. BEACH</u>	DATE: <u>1-20</u>

1/14/2020 10:06:16 AM G:\Projects\2017\I-5711\Structures\Drawings\Final\4015711_SMJ_PS_000177.dgn