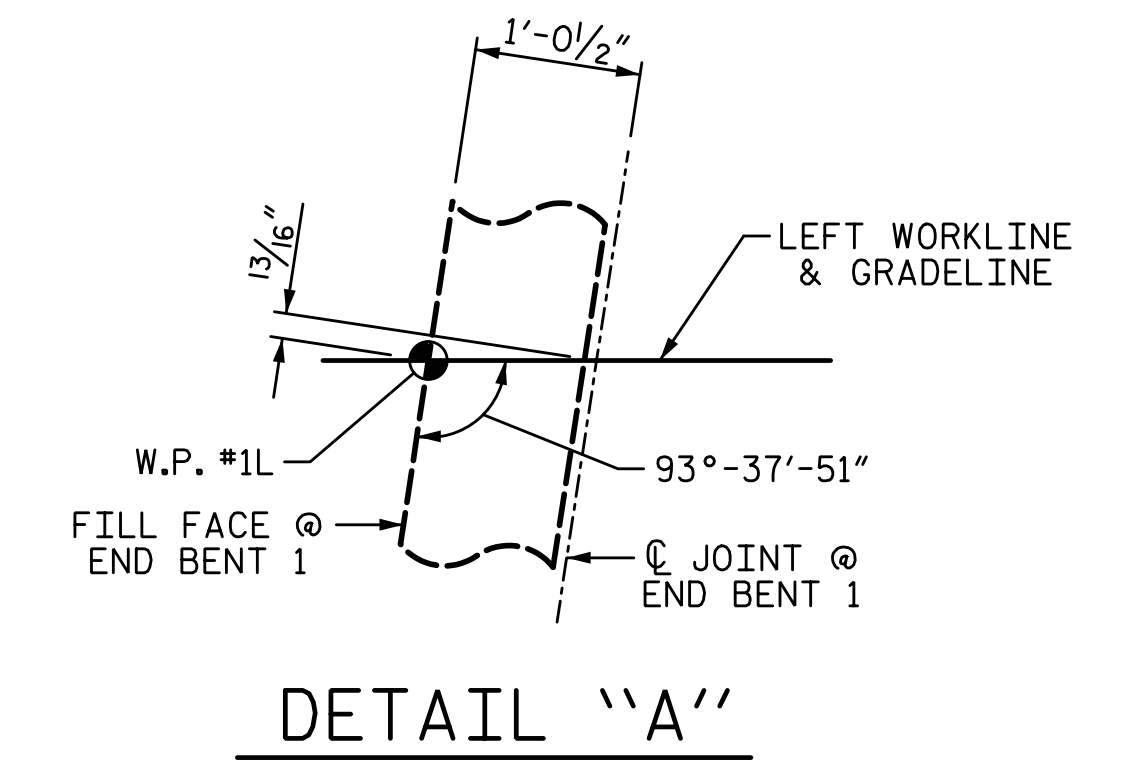
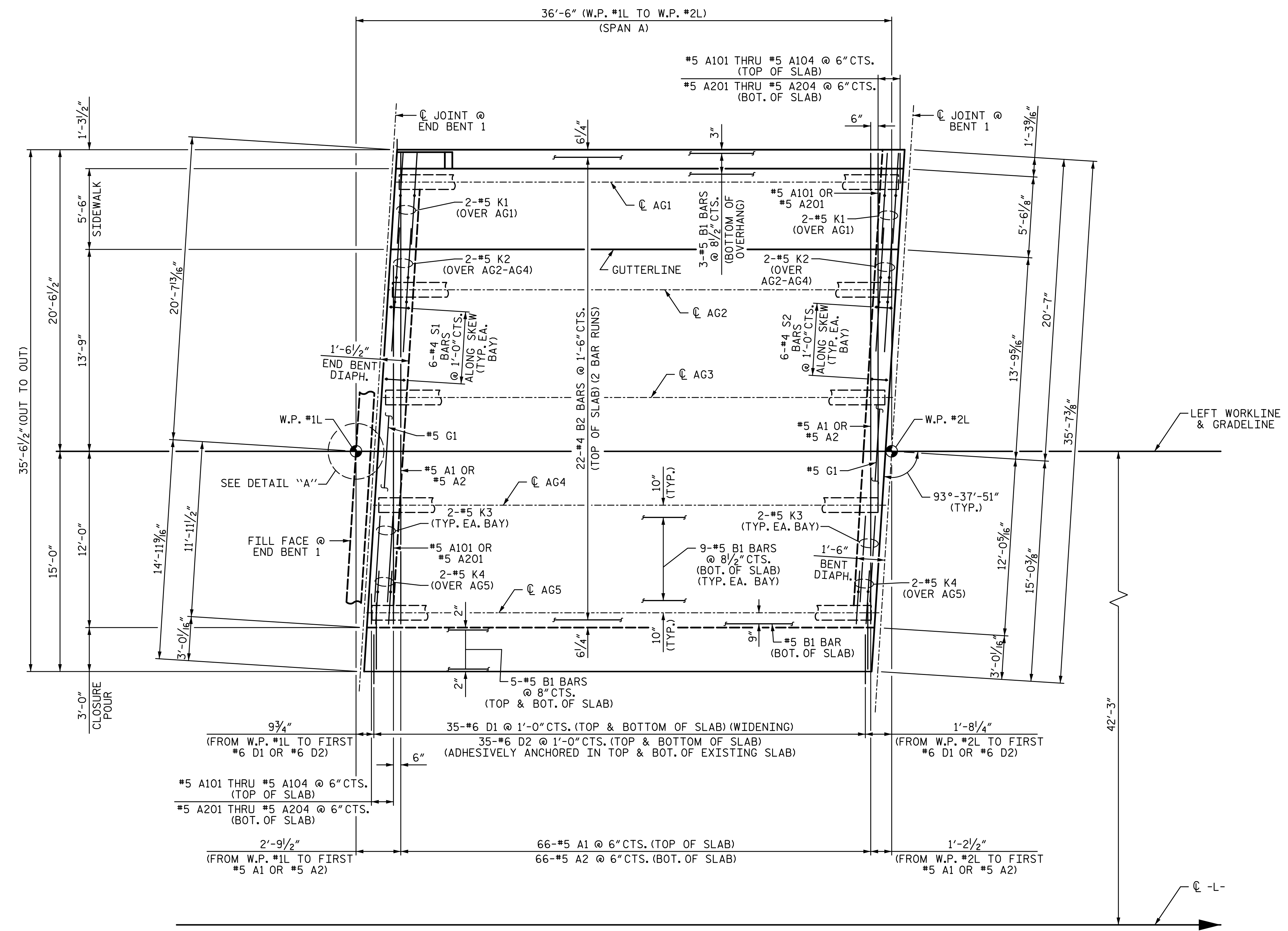


NOTES:
 FOR SIDEWALK REINFORCING STEEL, SEE "SIDEWALK DETAILS" SHEETS.



PLAN OF SPAN A

PROJECT NO. I-5711
ALAMANCE COUNTY
 STATION: STA. 27+02.26 -L-

SHEET 1 OF 6

STATE OF NORTH CAROLINA
 DEPARTMENT OF TRANSPORTATION
 RALEIGH
 SUPERSTRUCTURE

**PLAN OF SPAN
 (SPAN A)**

LEFT WIDENING



PLANS PREPARED BY:
SEALEY & ASSOCIATES
 ENGINEERS
 5640 Dillard Drive
 Suite 200
 Cary, NC 27518
 (919) 852-0468
 (919) 852-0538 (Fax)
 www.slmpsonengr.com
 LICENSURE NO. C-2521

REVISIONS				SHEET NO.	
NO.	BY:	DATE:	NO.	BY:	DATE:
1			3		
2			4		
					TOTAL SHEETS
					89

**DOCUMENT NOT CONSIDERED FINAL
 UNLESS ALL SIGNATURES COMPLETED**

1/14/2020 10:06:16 AM G:\Projects\2017\I-5711\Structures\Drawings\Final\401-I5711-SMJ_PS_000177.dgn

DRAWN BY: R. SEALEY DATE: 1-20
 CHECKED BY: T. BEACH DATE: 1-20
 DESIGN ENGINEER OF RECORD: T. BEACH DATE: 1-20