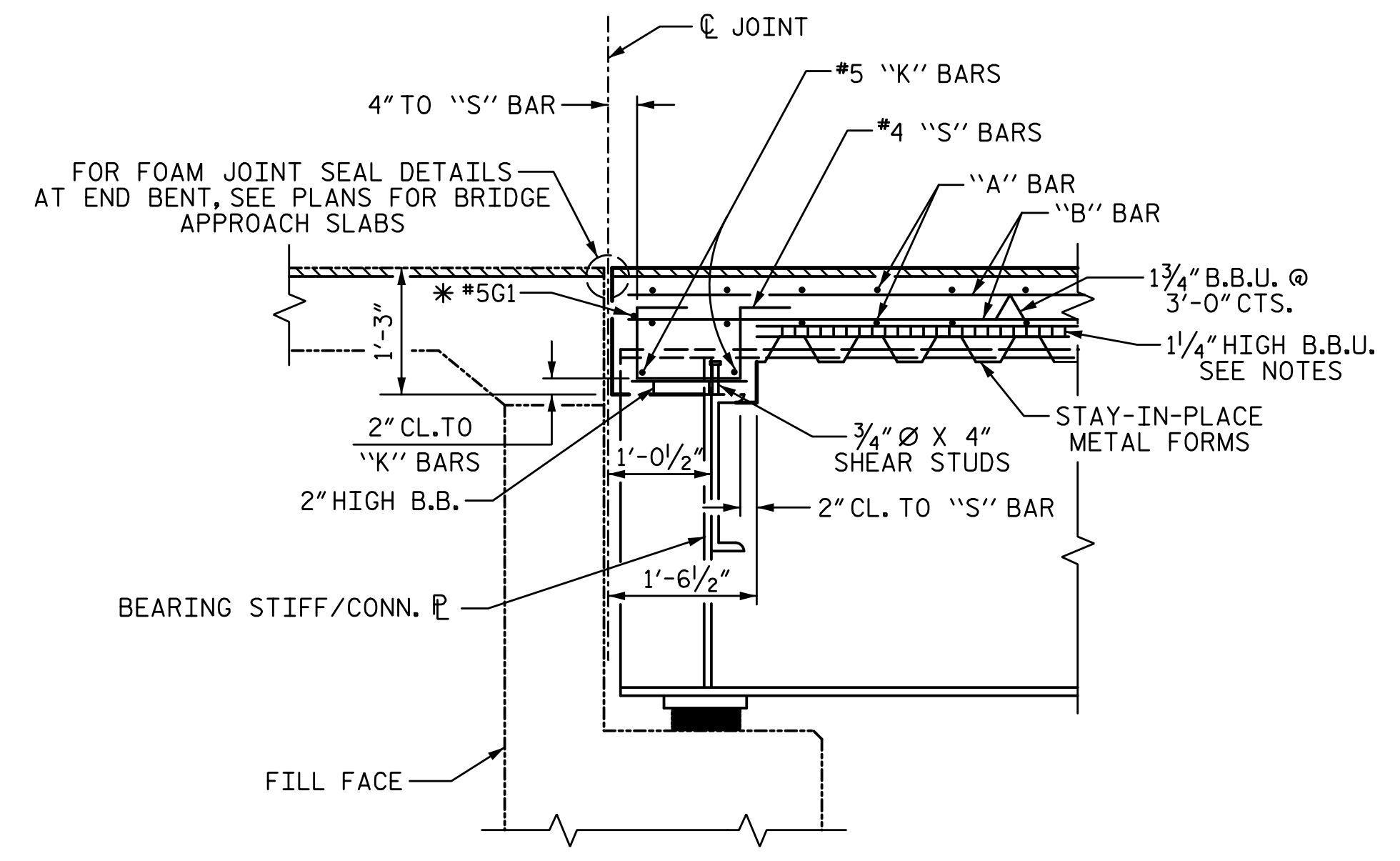


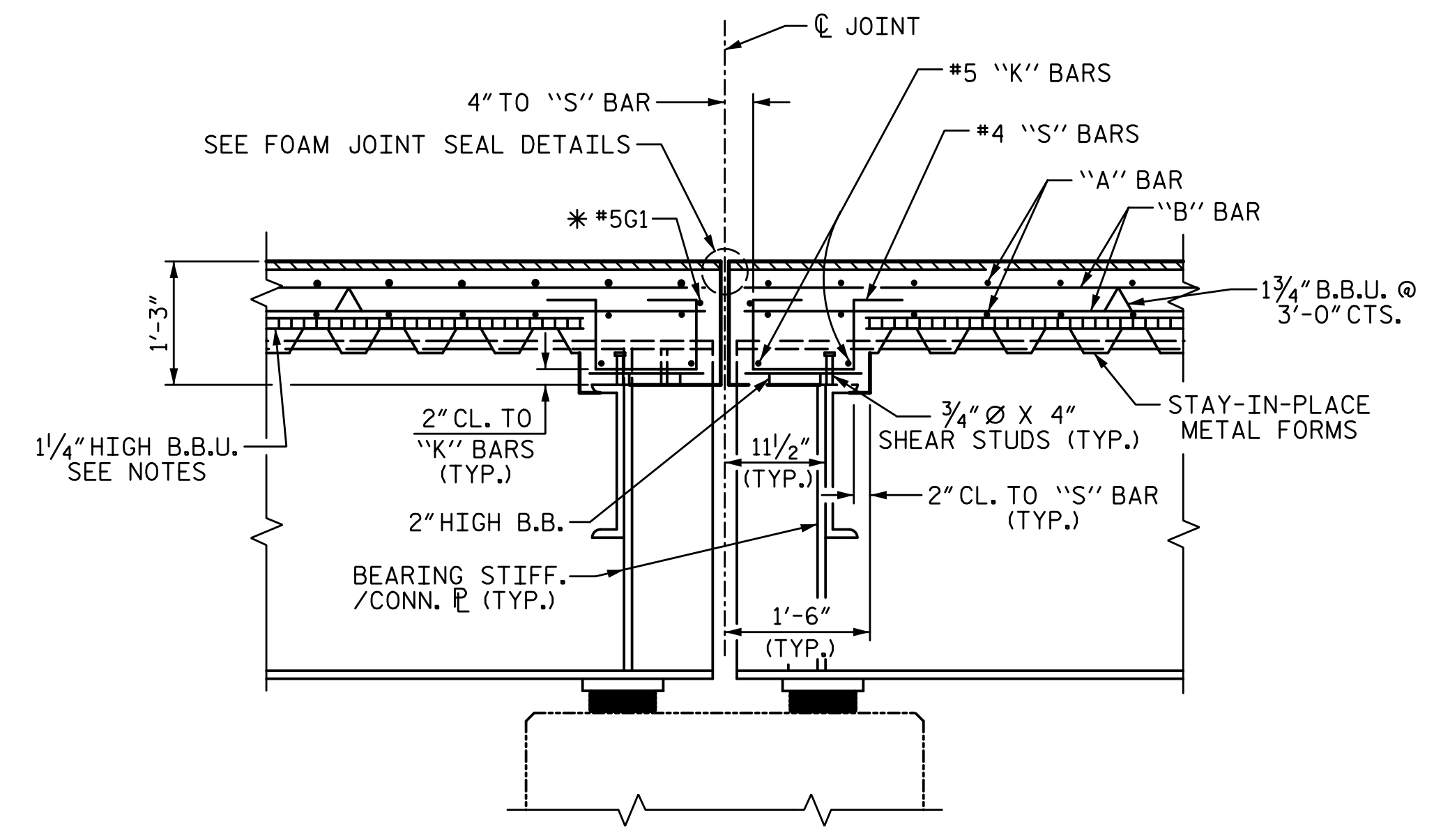
**NOTES:**

FOR FOAM JOINT SEAL DETAILS AT SIDEWALK SEE, "SIDEWALK DETAILS" SHEET 3 OF 3.  
 FOR FOAM JOINT SEALS, SEE SPECIAL PROVISIONS.  
 THE NOMINAL UNCOMPRESSED SEAL WIDTH OF THE FOAM JOINT SEAL SHALL BE 2" AT BENTS 1, 2 AND 3.



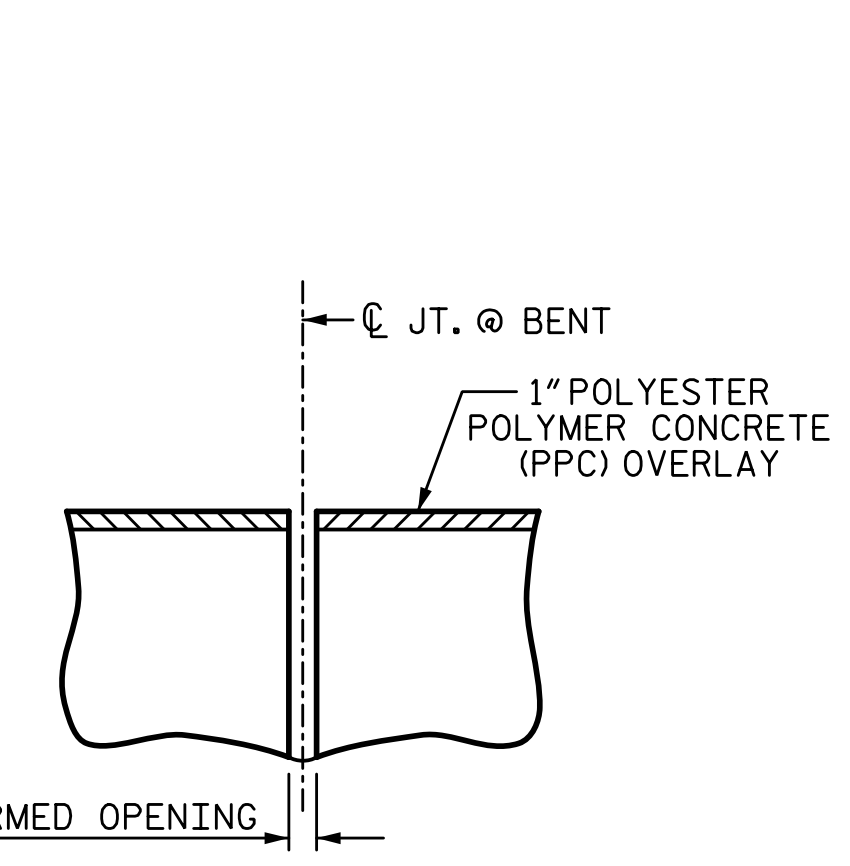
**SECTION THRU END BENT**

\* #5G1 BAR MAY BE SHIFTED SLIGHTLY, AS NECESSARY, TO CLEAR DIAPHRAGM AND REINFORCING STEEL.

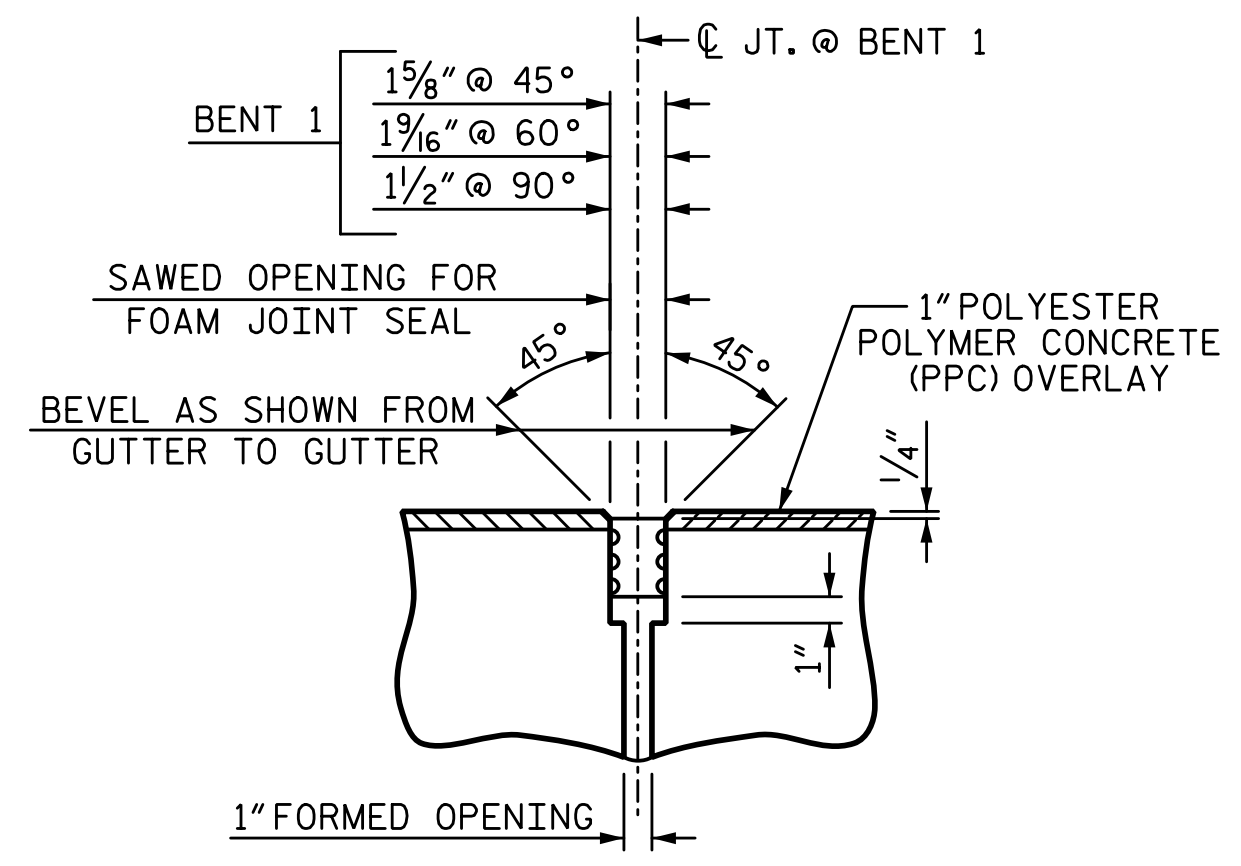


**SECTION THRU BENT**

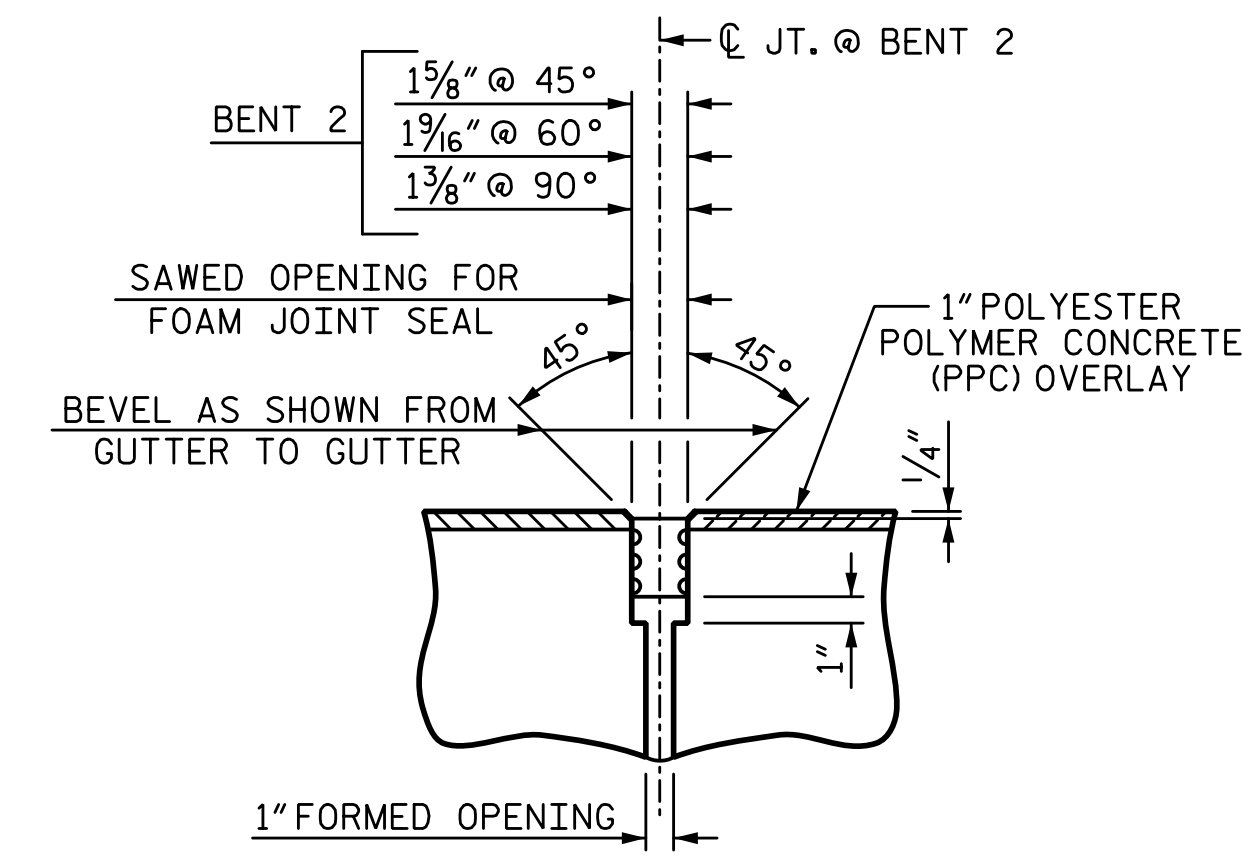
\* #5G1 BAR MAY BE SHIFTED SLIGHTLY, AS NECESSARY, TO CLEAR DIAPHRAGM AND REINFORCING STEEL.



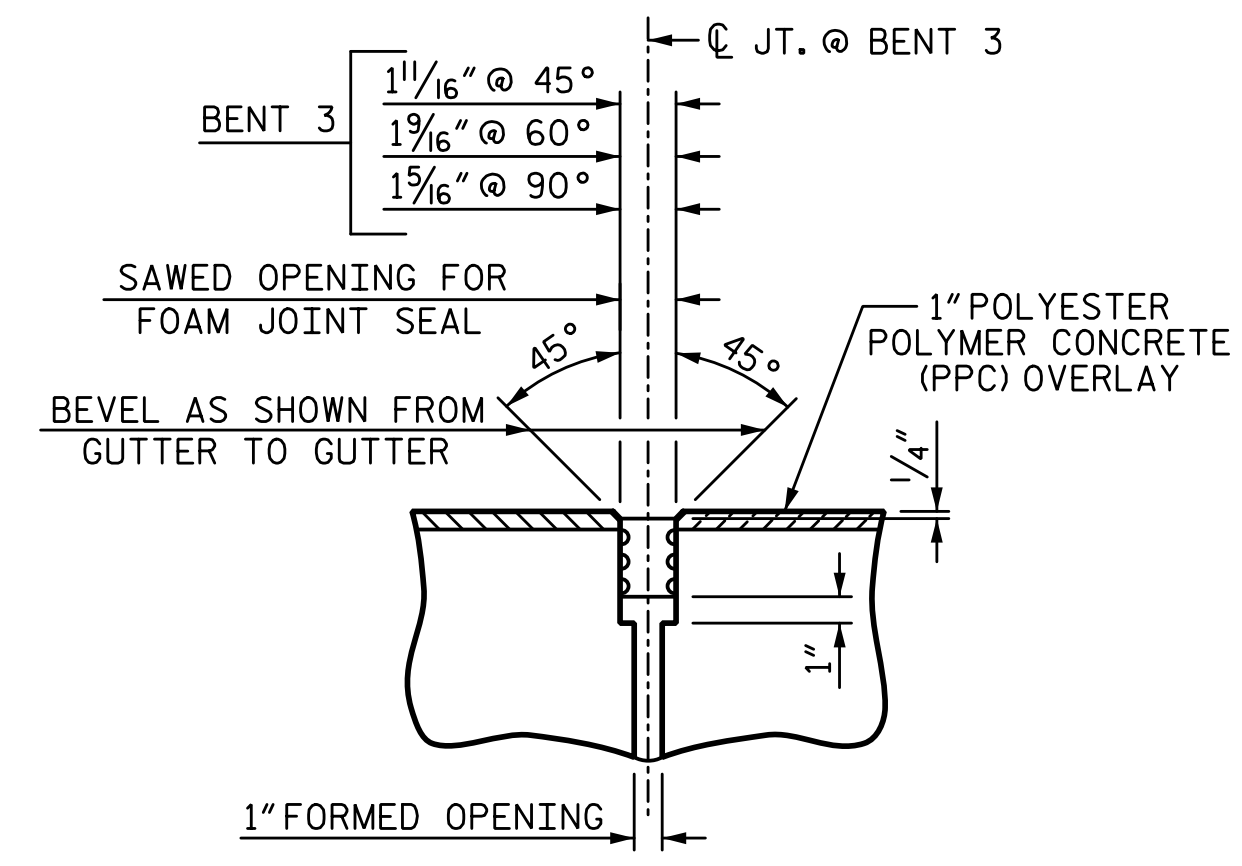
**PRE-SAWED FOAM JOINT SEAL**



**SECTION THRU JOINT @ BENT 1**  
FOAM JOINT SEAL (EXP.)



**SECTION THRU JOINT @ BENT 2**  
FOAM JOINT SEAL (EXP.)



**SECTION THRU JOINT @ BENT 3**  
FOAM JOINT SEAL (EXP.)

**FOAM JOINT SEAL DETAILS @ BENTS**

PROJECT NO. I-5711  
ALAMANCE COUNTY  
 STATION: STA. 27+02.26 -L-

SHEET 3 OF 3

STATE OF NORTH CAROLINA  
 DEPARTMENT OF TRANSPORTATION  
 RALEIGH  
 SUPERSTRUCTURE  
 TYPICAL SECTION  
 DETAILS  
 LEFT & RIGHT WIDENING

PLANS PREPARED BY:

**SE & A**  
 IMPSON ENGINEERS ASSOCIATES  
 5640 Dillard Drive  
 Suite 200  
 Cary, NC 27518  
 (919) 852-0468  
 (919) 852-0598 (Fax)  
 www.simpsonengr.com  
 LICENSURE NO. C-2521

DRAWN BY: R. SEALEY	DATE: 1-20
CHECKED BY: T. BEACH	DATE: 1-20
DESIGN ENGINEER OF RECORD: T. BEACH	DATE: 1-20

REVISIONS						SHEET NO.
NO.	BY:	DATE:	NO.	BY:	DATE:	S-10
1			3			TOTAL SHEETS
2			4			89

**DOCUMENT NOT CONSIDERED FINAL UNLESS ALL SIGNATURES COMPLETED**

1/14/2020 10:06:15 AM G:\Projects\2017\I-5711\Structures\Drawings\Final\401-I5711-SMJ\_TS\_000177.dgn