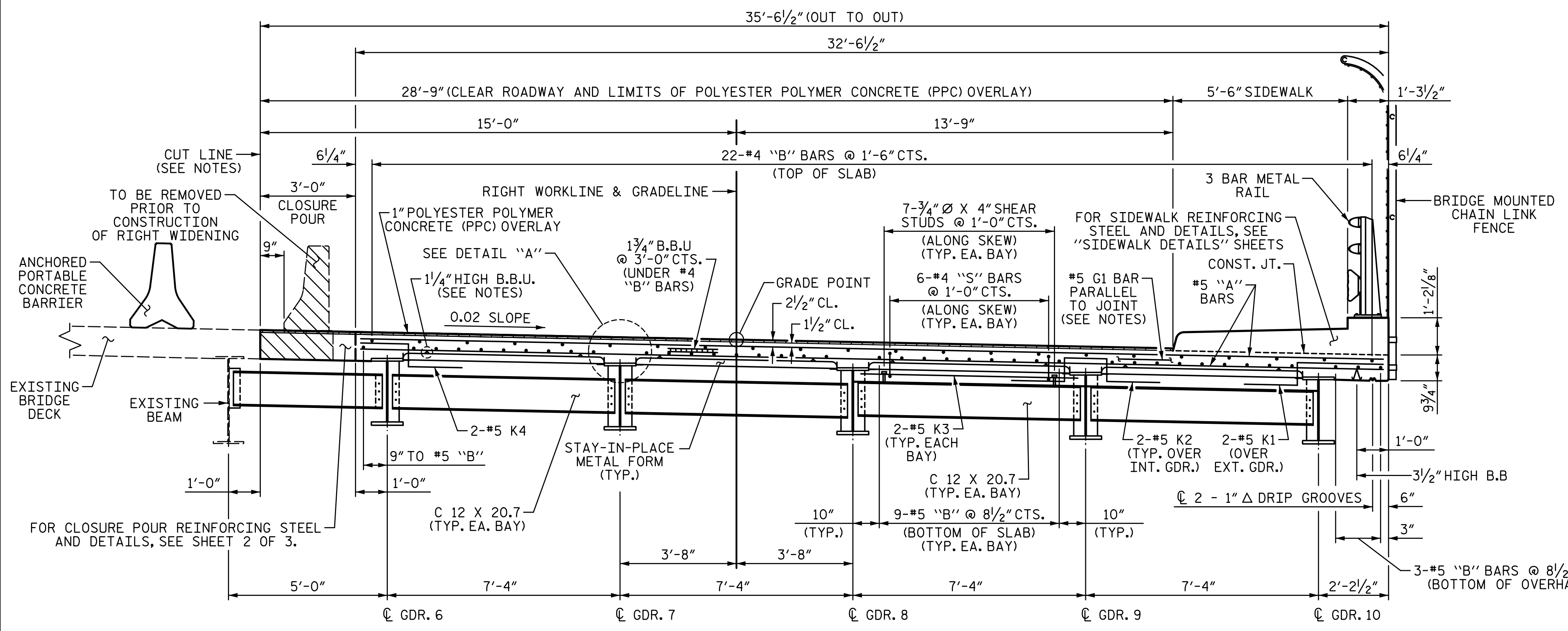


END BENT & BENT DIAPHRAGMS INTERMEDIATE DIAPHRAGMS

TYPICAL SECTION - LEFT WIDENING

(SPANS A & D LEFT WIDENING)



INTERMEDIATE DIAPHRAGMS END BENT & BENT DIAPHRAGMS

TYPICAL SECTION - RIGHT WIDENING

(SPANS A & D RIGHT WIDENING)

NOTES:

PROVIDE 1/4" HIGH BEAM BOLSTERS UPPER AT 4'-0" CTS. ATOP THE STAY-IN-PLACE METAL FORMS TO SUPPORT THE BOTTOM MAT OF "A" BARS. WHEN USING REMOVABLE FORMS, PROVIDE CONTINUOUS HIGH CHAIRS FOR METAL DECK (C.H.C.M.) @ 4'-0" CTS. WITH A HEIGHT TO SUPPORT THE BOTTOM MAT OF "A" BARS A CLEAR DISTANCE OF 2 1/2" ABOVE THE TOP OF THE REMOVABLE FORM.

STAY-IN-PLACE METAL FORMS SHALL NOT BE WELDED TO GIRDER FLANGES IN THE ZONES REQUIRING CHARPY V-NOTCH TEST. SEE STRUCTURAL STEEL DETAIL SHEETS.

END POSTS AND SIDEWALKS IN EACH SPAN SHALL NOT BE CAST UNTIL ALL SLAB CONCRETE IN THAT SPAN HAS BEEN CAST AND HAS REACHED A MINIMUM COMPRESSIVE STRENGTH OF 3,000 PSI.

THE CONTRACTOR MAY, WHEN NECESSARY, PROPOSE A SCHEME FOR AVOIDING INTERFERENCE BETWEEN METAL STAY-IN-PLACE FORM SUPPORTS OR FORMS AND GIRDER STIFFENERS OR CONNECTOR PLATES. THE PROPOSAL SHALL BE INDICATED, AS APPROPRIATE, ON EITHER THE STEEL WORKING DRAWINGS OR THE STAY-IN-PLACE METAL FORM WORKING DRAWINGS.

FOR BRIDGE MOUNTED CHAIN LINK FENCE DETAILS AND LOCATION, SEE "BRIDGE MOUNTED CHAIN LINK FENCE DETAILS" SHEETS.

#5 G1 BAR MAY BE SHIFTED SLIGHTLY, AS NECESSARY, TO CLEAR REINFORCING STEEL AND STIRRUPS.

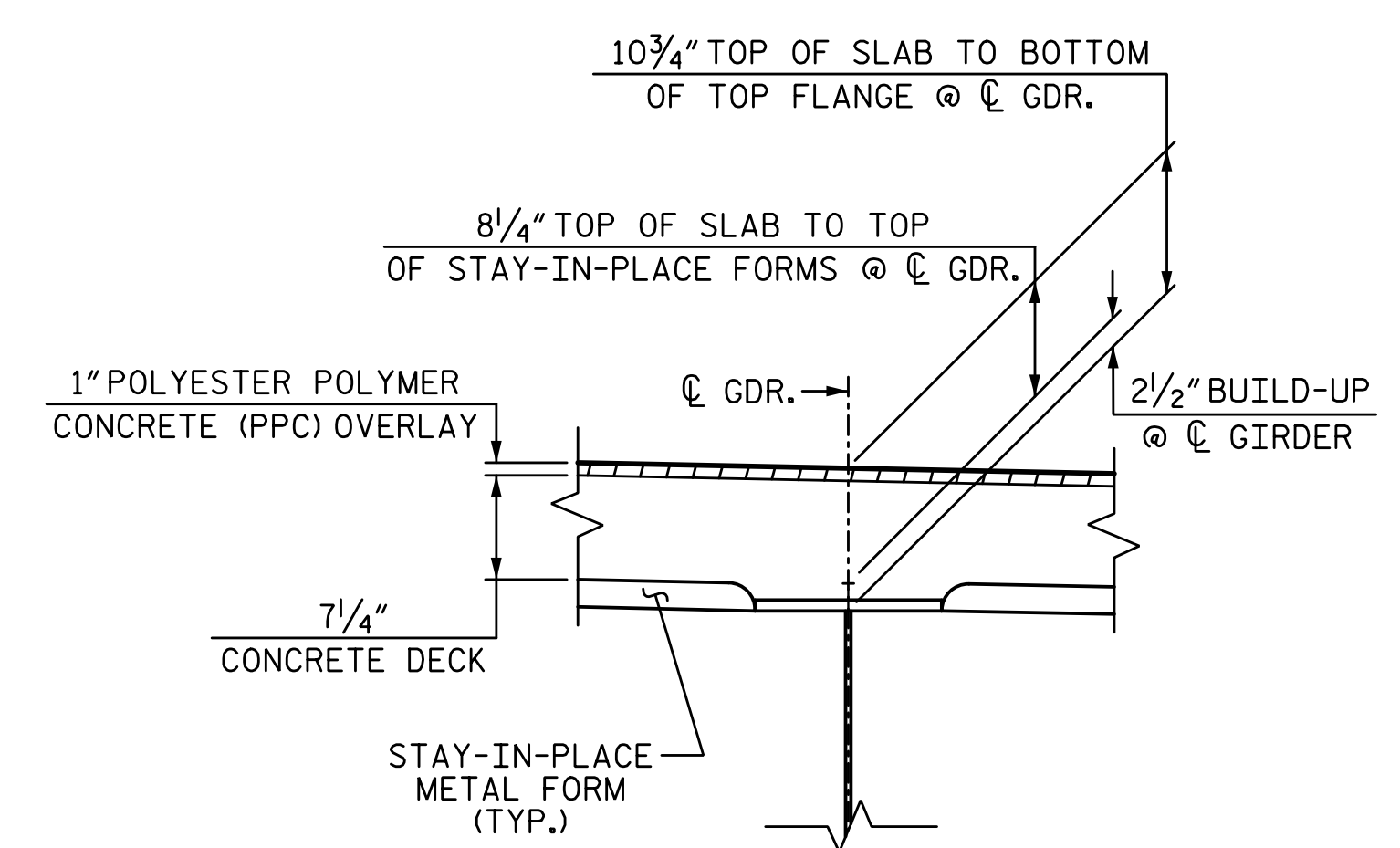
A FULL DEPTH SAW CUT SHALL BE MADE AND EXISTING CONCRETE REMOVED IN ACCORDANCE WITH PLAN DETAILS.

SEE TRAFFIC CONTROL PLANS FOR LOCATION AND PAY LIMITS OF THE ANCHORED PORTABLE CONCRETE BARRIER.

FOR OVERLAY SURFACE PREPARATION FOR POLYESTER POLYMER CONCRETE, SEE SPECIAL PROVISIONS.

FOR POLYESTER POLYMER CONCRETE BRIDGE DECK OVERLAY, SEE SPECIAL PROVISIONS.

THE TOTAL BRIDGE DECK THICKNESS IS 8 1/4" AND CONSISTS OF A 7 1/4" REINFORCED CONCRETE DECK AND A 1" POLYESTER POLYMER CONCRETE OVERLAY. THE REINFORCED CONCRETE DECK SHALL RECEIVE A BROOM FINISH THAT RUNS PERPENDICULAR TO THE DIRECTION OF TRAFFIC AND THE DECK SHALL BE SHOTBLASTED PRIOR TO OVERLAY. OVERLAY EACH WIDENING TO THE LIMITS OF THE PLANS AND MATCH THE DECK PROFILE OF THE EXISTING BRIDGE.



DETAIL "A"

(TYP. EA. GIRDER)

PROJECT NO. I-5711
 ALAMANCE COUNTY
 STATION: STA. 27+02.26 -L-

SHEET 1 OF 3

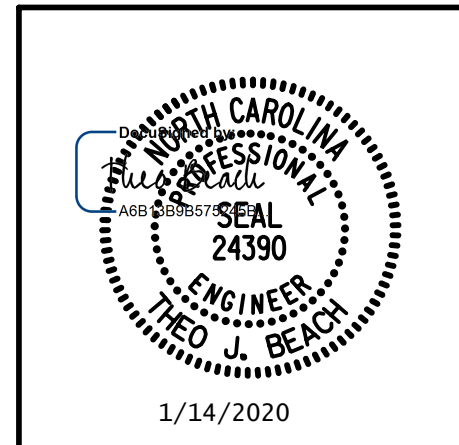
STATE OF NORTH CAROLINA
 DEPARTMENT OF TRANSPORTATION
 RALEIGH
 SUPERSTRUCTURE

TYPICAL SECTION (SPANS A & D)

LEFT & RIGHT WIDENING

REVISIONS				SHEET NO.			
NO.	BY:	DATE:	NO.	BY:	DATE:	S-8	
1			3			TOTAL SHEETS	
2			4			89	

PLANS PREPARED BY:
SEA & ASSOCIATES
 5640 Dillard Drive
 Suite 200
 Cary, NC 27518
 (919) 852-0468
 (919) 852-0538 (Fax)
 www.simpsonengr.com
 LICENSURE NO. C-2521



1/14/2020 10:06:15 AM G:\Projects\2017\I-5711\Structures\Drawings\Final\401-I5711-SMJ_TS_000177.dgn

DRAWN BY: R. SEALEY DATE: 1-20
 CHECKED BY: T. BEACH DATE: 1-20
 DESIGN ENGINEER OF RECORD: T. BEACH DATE: 1-20

DOCUMENT NOT CONSIDERED FINAL
 UNLESS ALL SIGNATURES COMPLETED