

8/17/99

CLEARING AND GRUBBING
EROSION CONTROL FOR
CONSTRUCTION SHEET 6

NOTE:
PLACE TEMPORARY ROCK SEDIMENT DAMS TYPE - B
AND TEMPORARY ROCK SILT CHECKS TYPE - A AT
DRAINAGE OUTLETS.

NOTE:
UTILIZE FABRIC INSERT INLET PROTECTION
DEVICES IN LIEU OF ROCK INLET SEDIMENT
TRAPS, TYPE C TO AVOID IMPOUNDMENT
OF WATER IN ROADWAY OPEN TO TRAFFIC

$P\dot{I}$ Sta 38+23.80
 $\Delta = 2^{\circ}03'23.8"$ (LT)
 $D = 2^{\circ}59'59.2"$
 $L = 68.56'$
 $T = 34.28'$
 $R = 190.00'$
 $e = NC$ (Exist)

$P\dot{I}$ Sta 45+57.27
 $\Delta = 6^{\circ}42'41.3"$ (RT)
 $D = 2^{\circ}29'28.0"$
 $L = 269.42'$
 $T = 134.86'$
 $R = 2,300.00'$
 $e = 6\%$ (Exist)

$-Y4A-$
 $P\dot{I}$ Sta 13+24.59
 $\Delta = 35^{\circ}09'38.4"$ (LT)
 $D = 38^{\circ}11'49.9"$
 $L = 92.05'$
 $T = 47.53'$
 $R = 150.00'$

LOCHNER

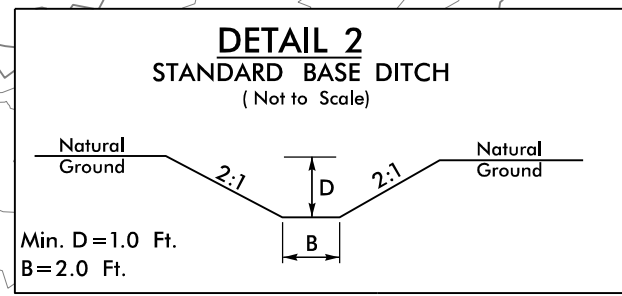
H. W. LOCHNER, INC.
2840 PLAZA PLACE, SUITE 202
RALEIGH, NC 27612
(919) 571-7111

NC License
Number E-0159



VHB Engineering NC, P.C. (C-3705)
940 Main Campus Drive, Suite 500
Raleigh, NC 27606

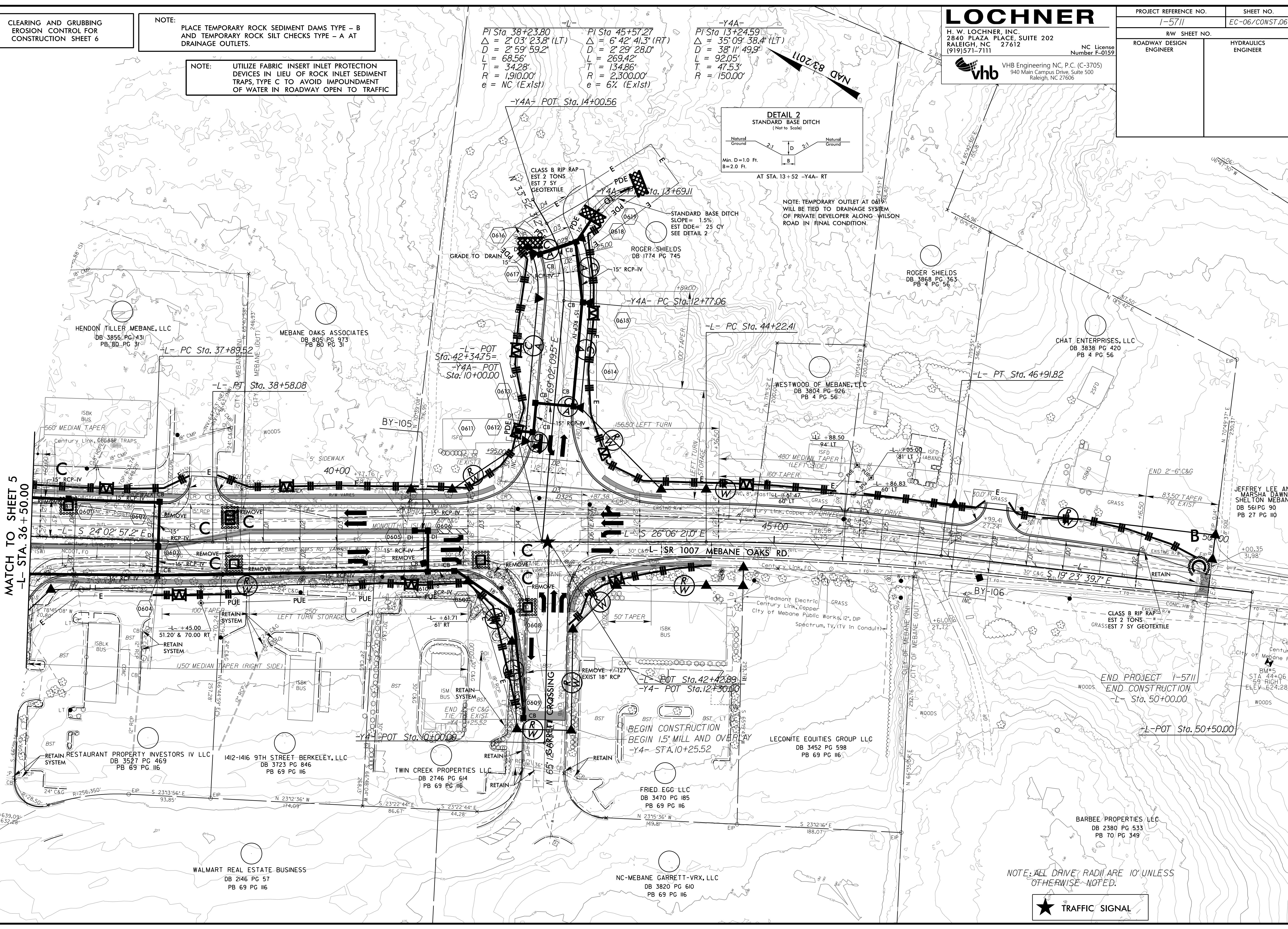
PROJECT REFERENCE NO. I-5711	SHEET NO. EC-06/CONST.06
RW SHEET NO.	
ROADWAY DESIGN ENGINEER	HYDRAULICS ENGINEER



NOTE: TEMPORARY OUTLET AT 0615
WILL BE TIED TO DRAINAGE SYSTEM
OF PRIVATE DEVELOPER ALONG WILSON
ROAD IN FINAL CONDITION.

MATCH TO SHEET 5
-L- STA. 36+50.00

12/16/2020
T:\Projects\I-5711\REV. CG.PSH06.dgn
T:\Projects\I-5711



NOTE: ALL DRIVE RADII ARE 10' UNLESS
OTHERWISE NOTED.



TRAFFIC SIGNAL