

CLEARING AND GRUBBING
EROSION CONTROL FOR
CONSTRUCTION SHEET 4

NOTE:
PLACE TEMPORARY ROCK SEDIMENT DAMS TYPE - B
AND TEMPORARY ROCK SILT CHECKS TYPE - A AT
DRAINAGE OUTLETS.

NOTE:
UTILIZE FABRIC INSERT INLET PROTECTION
DEVICES IN LIEU OF ROCK INLET SEDIMENT
TRAPS, TYPE C TO AVOID IMPOUNDMENT
OF WATER IN ROADWAY OPEN TO TRAFFIC

-L-
PI Sta 19+55.91
 $\Delta = 5' 55' 08.8''$ (LT)
 $D = 1' 29' 59.6''$
 $L = 394.64'$
 $T = 197.49'$
 $R = 3,820.00'$
 $e = 3\%$ (Exist)
 $R.O. = 265' (53' Inc)$

LOCHNER

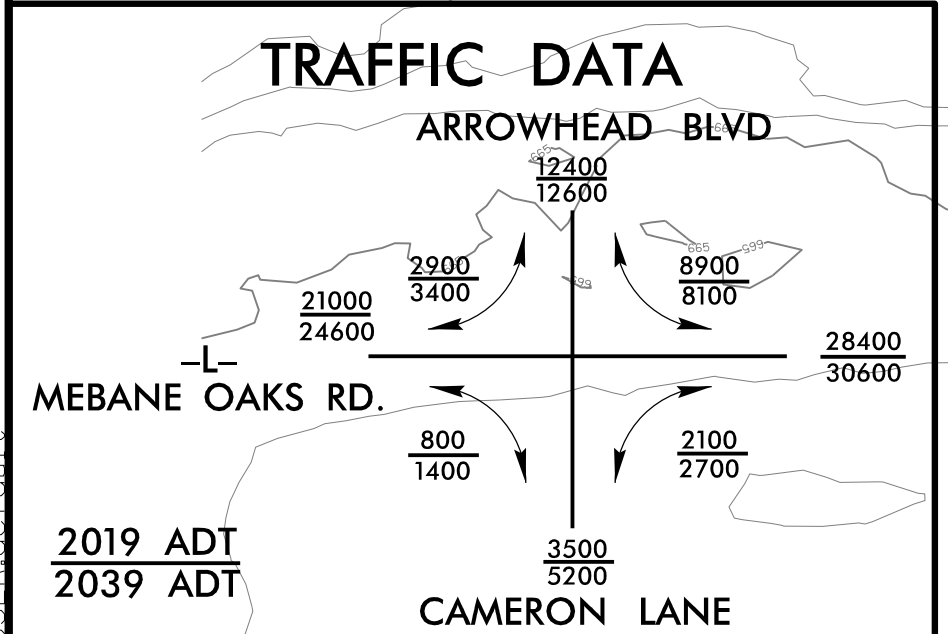
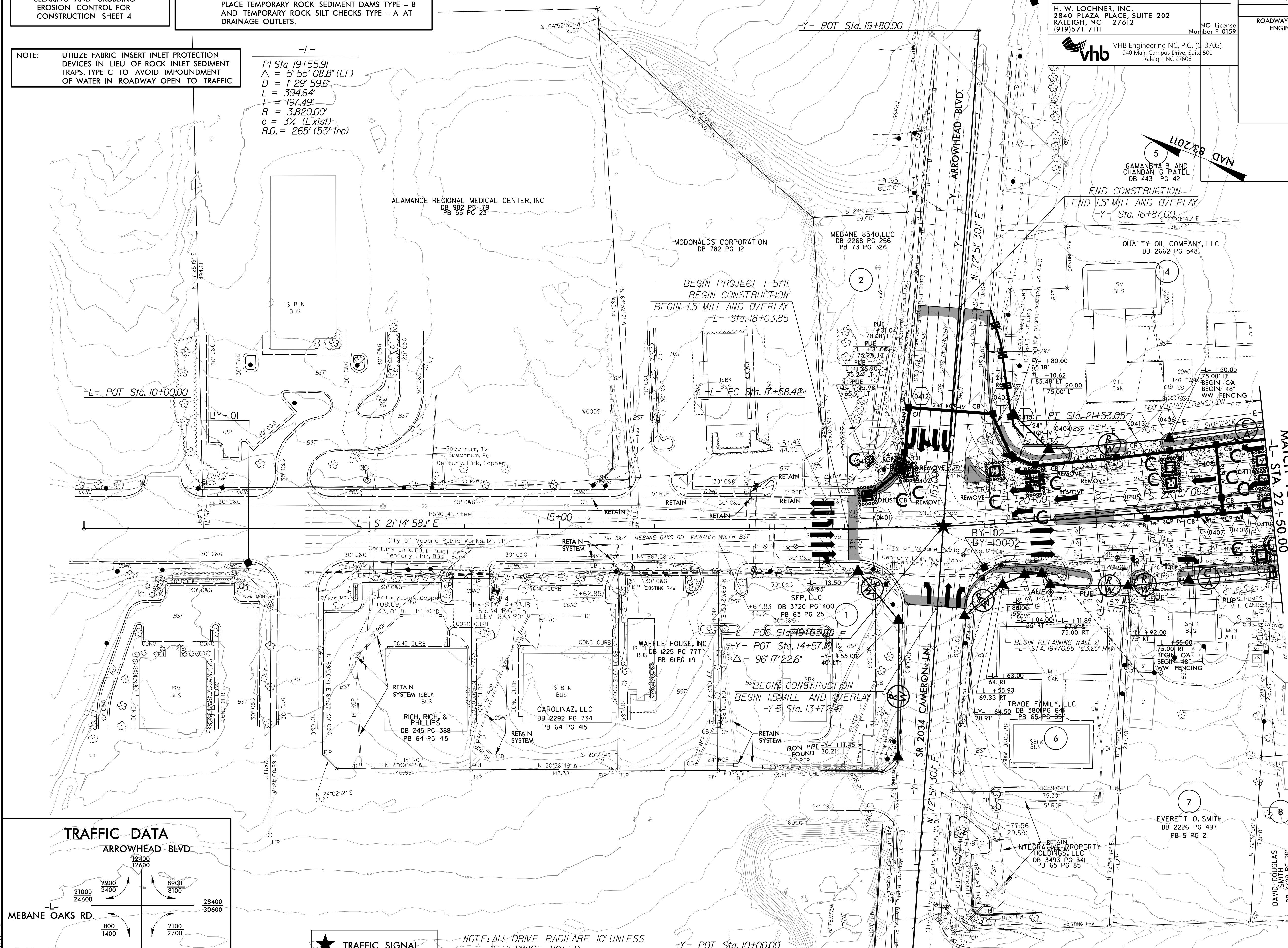
H. W. LOCHNER, INC.
2840 PLAZA PLACE, SUITE 202
RALEIGH, NC 27612
(919) 571-7111

NC License
Number E-0159



VHB Engineering NC, P.C. (C-3705)
940 Main Campus Drive, Suite 500
Raleigh, NC 27606

PROJECT REFERENCE NO. I-5711	SHEET NO. EC-04/CONST.04
R/W SHEET NO.	HYDRAULICS ENGINEER
ROADWAY DESIGN ENGINEER	



NOTE: ALL DRIVE RADII ARE 10' UNLESS OTHERWISE NOTED.

MATCH TO SHEET 5
-L- STA 22 + 50.00

5
CAMANBHAB AND
CHANDAN G PATEL
DB 443 PG 42
END CONSTRUCTION
END 1.5" MILL AND OVERLAY
-Y- Sta. 16+87.00

BEGIN PROJECT I-5711
BEGIN CONSTRUCTION
BEGIN 1.5" MILL AND OVERLAY
-L- Sta. 18+03.85

POS Sta. 19+03.88
-Y- POT Sta. 14+57.18
 $\Delta = 96' 17' 22.6''$
-Y- Sta. 13+72.77
BEGIN CONSTRUCTION
BEGIN 1.5" MILL AND OVERLAY

-Y- POT Sta. 10+00.00