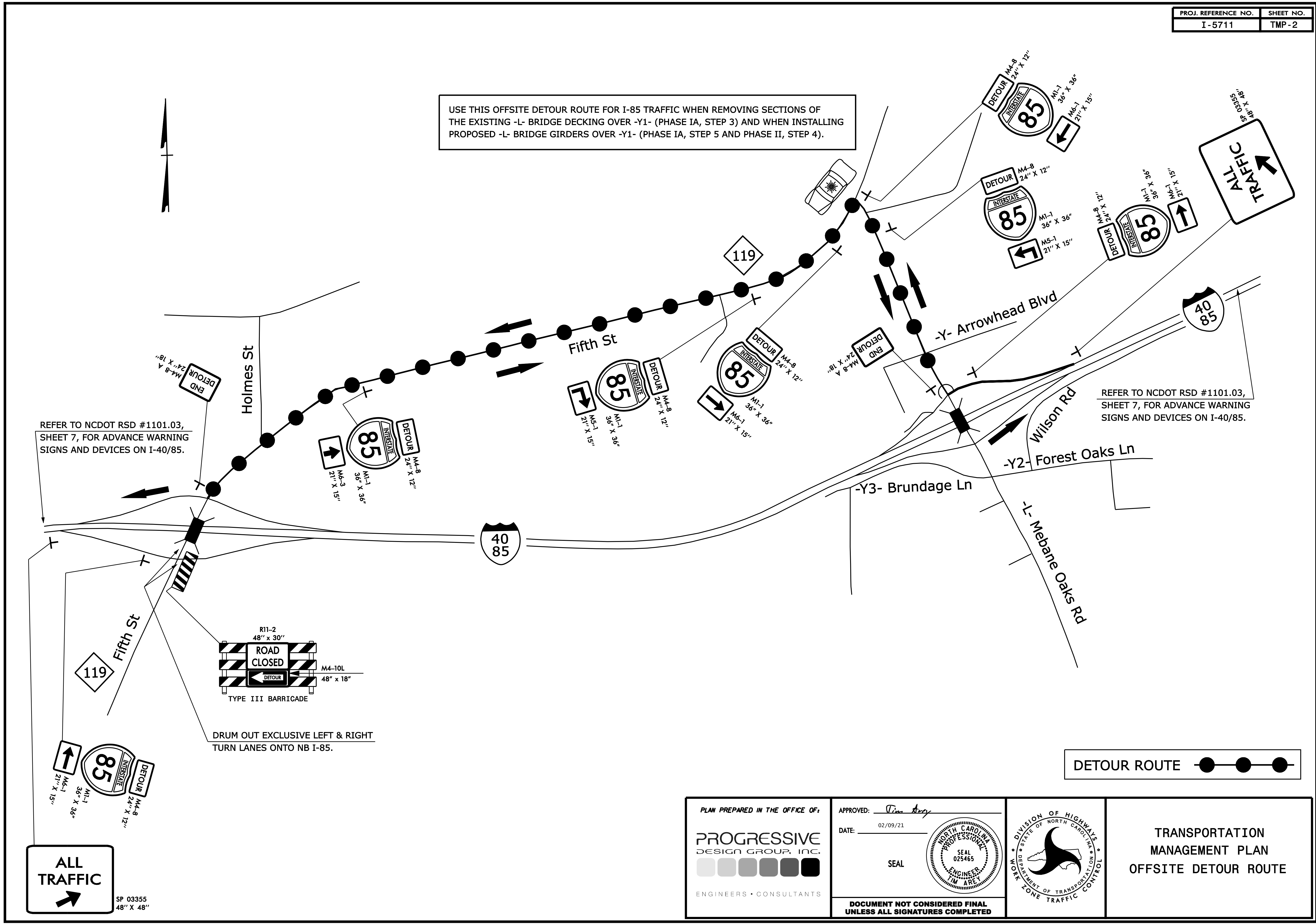


USE THIS OFFSITE DETOUR ROUTE FOR I-85 TRAFFIC WHEN REMOVING SECTIONS OF THE EXISTING -L- BRIDGE DECKING OVER -Y1- (PHASE IA, STEP 3) AND WHEN INSTALLING PROPOSED -L- BRIDGE GIRDERS OVER -Y1- (PHASE IA, STEP 5 AND PHASE II, STEP 4).

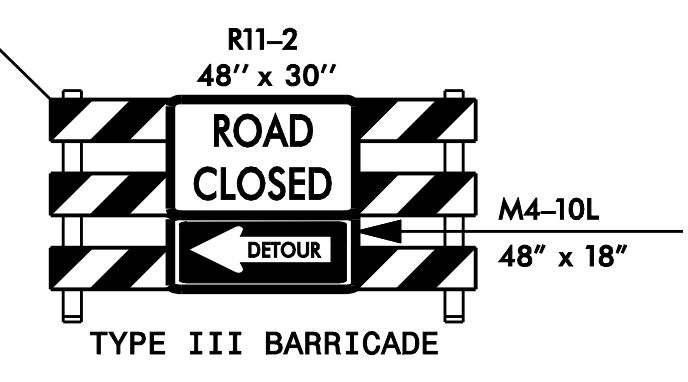
REFER TO NCDOT RSD #1101.03, SHEET 7, FOR ADVANCE WARNING SIGNS AND DEVICES ON I-40/85.

REFER TO NCDOT RSD #1101.03, SHEET 7, FOR ADVANCE WARNING SIGNS AND DEVICES ON I-40/85.



ALL TRAFFIC
↑

SP 03355
48" X 48"



DRUM OUT EXCLUSIVE LEFT & RIGHT TURN LANES ONTO NB I-85.

PLAN PREPARED IN THE OFFICE OF:
PROGRESSIVE DESIGN GROUP, INC.
ENGINEERS • CONSULTANTS

APPROVED: *[Signature]*
DATE: 02/09/21
SEAL
DOCUMENT NOT CONSIDERED FINAL UNLESS ALL SIGNATURES COMPLETED

DIVISION OF HIGHWAYS
STATE OF NORTH CAROLINA
DEPARTMENT OF TRANSPORTATION
WORK ZONE TRAFFIC CONTROL

TRANSPORTATION MANAGEMENT PLAN
OFFSITE DETOUR ROUTE