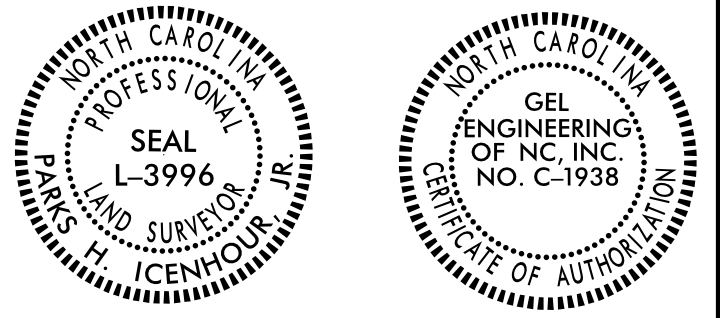


6/2/09

Location and Surveys

GEL SOLUTIONS



DOCUMENT NOT CONSIDERED FINAL UNLESS ALL SIGNATURES COMPLETED

I, PARKS H ICENHOUR, JR., a Professional Land Surveyor in the state of North Carolina hereby certify to the best of my knowledge and belief that the following work item(s) (Base map Compilation, R/W Staking) performed under my responsible charge meet NCDOT Survey Standards as directed in the NCDOT Location & Surveys guidelines and procedures.

I further certify that the data compiled came from available surveys/mapping performed by others and provided to me by NCDOT and do not certify to the accuracy or quality of the individual data sources.

I further certify that the right of way and permanent easement points shown herein and outlined in the tables shown hereon (localized coordinates, station/offset) have been checked and are accurate representations of the right of way and permanent easement points depicted on the corresponding highway plans. I also certify that the right of way and permanent easement points shown herein have been field monumented under my supervision from existing survey control provided by others; that the depicted property data shown herein were surveyed by others; and these monuments denote the right of way and easement boundaries at the time of staking which may be subject to change due to right of way revisions (See deeds for final determination).

Witness my original signature, registration number and seal this 9th day of October, 2019.

-RPB YI-		
PIs Sta 11+40.02	PI Sta 14+11.20	PIs Sta 16+80.85
Os = 3'15'06.9"	Δ = 12'24'50.4" (LT)	Os = 3'15'06.9"
Ls = 210.00'	D = 3'05'49.4"	Ls = 210.00'
LT = 140.02'	L = 400.83'	LT = 140.02'
ST = 70.02'	T = 201.20'	ST = 70.02'
	R = 1,850.00'	
	e = 0.07	
	V = 60 MPH	

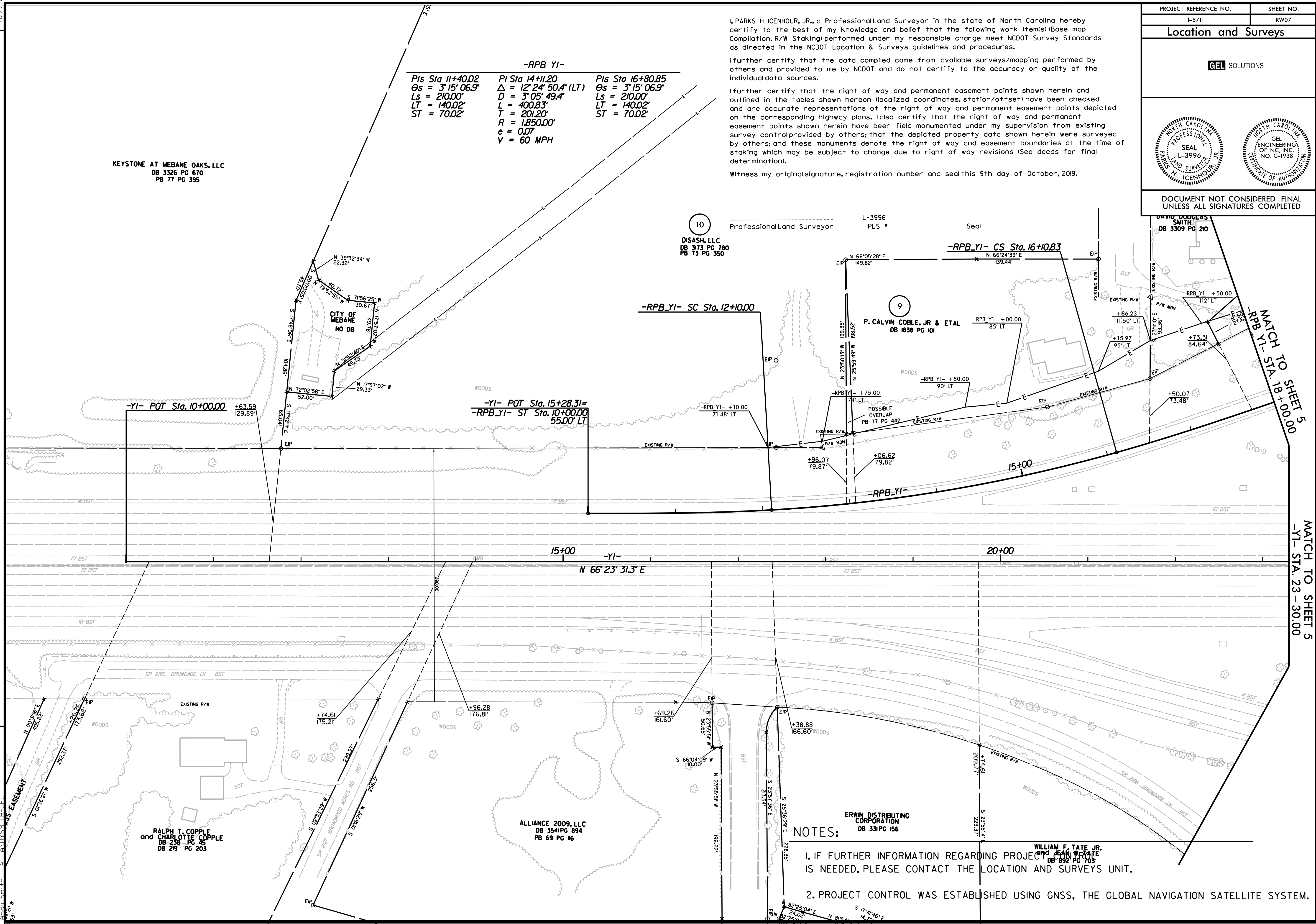
KEYSTONE AT MEBANE OAKS, LLC
DB 3326 PG 670
PB 77 PG 395

10
DISASH, LLC
DB 3173 PG 780
PB 73 PG 350

L-3996
PLS *
Seal

DAVID DOUGLAS SMITH
DB 3309 PG 210

REVISIONS



14-051-208.dwg
C:\5711\RM\SHEETS\1-5711.LS.RW07.dgn
David Douglas Smith

RALPH T. COPPLE and CHARLOTTE COPPLE
DB 238 PG 45
DB 219 PG 203

ALLIANCE 2009, LLC
DB 3541 PG 894
PB 69 PG 116

ERWIN DISTRIBUTING CORPORATION
DB 331 PG 156

WILLIAM F. TATE JR.
DB 892 PG 105

NOTES:

- IF FURTHER INFORMATION REGARDING PROJECT CONTROL IS NEEDED, PLEASE CONTACT THE LOCATION AND SURVEYS UNIT.
- PROJECT CONTROL WAS ESTABLISHED USING GNSS, THE GLOBAL NAVIGATION SATELLITE SYSTEM.

MATCH TO SHEET 5
-RPB YI- STA. 16+00.00

MATCH TO SHEET 5
-YI- STA. 23+30.00