

8/17/99

LOCHNER
 H. W. LOCHNER, INC.
 2840 PLAZA PLACE, SUITE 202
 RALEIGH, NC 27612
 (919) 571-7111

NC License Number F-0159

VHB Engineering NC, P.C. (C-3705)
 940 Main Campus Drive, Suite 500
 Raleigh, NC 27606

PROJECT REFERENCE NO. 1-5711
 SHEET NO. 8

R/W SHEET NO. 1-5711

ROADWAY DESIGN ENGINEER
 2/9/2021

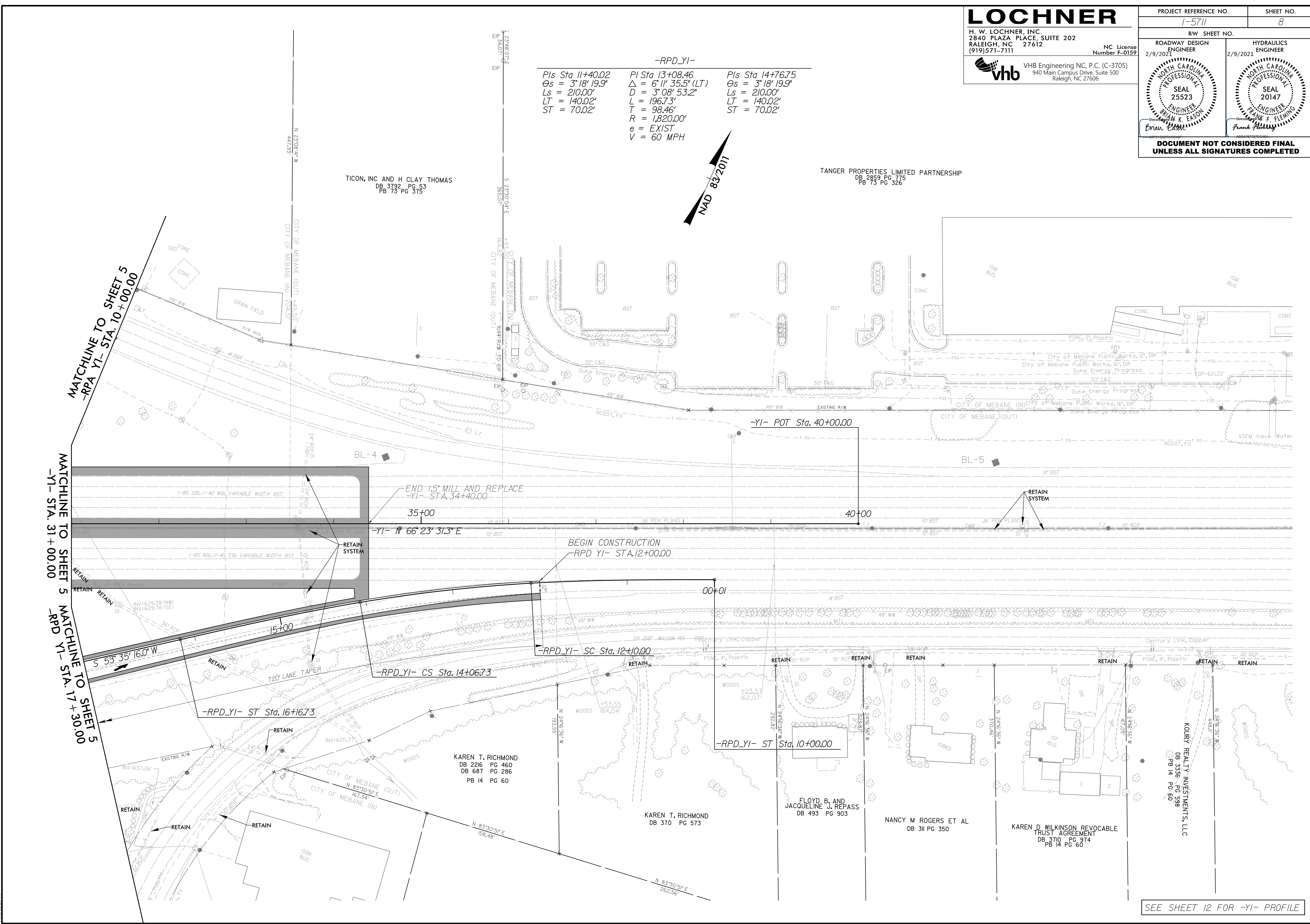
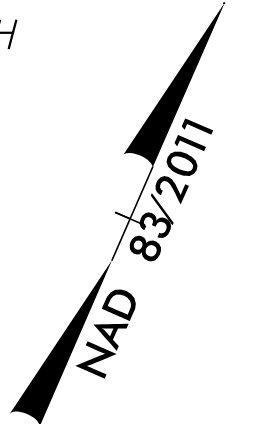
HYDRAULICS ENGINEER
 2/9/2021

Professional Engineer Seal: 25523, Brian K. Eason
 Professional Engineer Seal: 20147, Frank F. Fleming

DOCUMENT NOT CONSIDERED FINAL UNLESS ALL SIGNATURES COMPLETED

-RPD_YI-

Pls Sta 11+40.02 $\Theta_s = 3^\circ 18' 19.9''$ $L_s = 210.00'$ $LT = 140.02'$ $ST = 70.02'$	Pl Sta 13+08.46 $\Delta = 6^\circ 11' 35.5'' (LT)$ $D = 3^\circ 08' 53.2''$ $L = 196.73'$ $T = 98.46'$ $R = 1,820.00'$ $e = EXIST$ $V = 60 \text{ MPH}$	Pls Sta 14+76.75 $\Theta_s = 3^\circ 18' 19.9''$ $L_s = 210.00'$ $LT = 140.02'$ $ST = 70.02'$
---	--	---



MATCHLINE TO SHEET 5
 -RPA YI- STA. 10+00.00

MATCHLINE TO SHEET 5
 -YI- STA. 31+00.00

MATCHLINE TO SHEET 5
 -RPD YI- STA. 17+30.00

END 15\"/>

BEGIN CONSTRUCTION
 -RPD YI- STA. 12+00.00

-RPD_YI- SC Sta. 12+10.00

-RPD_YI- CS Sta. 14+06.73

-RPD_YI- ST Sta. 16+16.73

-RPD_YI- ST Sta. 10+00.00

KAREN T. RICHMOND
 DB 2216 PG 460
 DB 687 PG 286
 PB 14 PG 60

KAREN T. RICHMOND
 DB 370 PG 573

FLOYD B. AND
 JACQUELINE J. REPASS
 DB 493 PG 903

NANCY M. ROGERS ET AL
 DB 311 PG 350

KAREN D. WILKINSON REVOCABLE
 TRUST AGREEMENT
 DB 3710 PG 974
 PB 14 PG 60

KOURT REALTY INVESTMENTS, LLC
 DB 3336 PG 598
 PB 14 PG 60

SEE SHEET 12 FOR -YI- PROFILE

12/15/2020
 1-5711-RDY_PSH_108.dgn
 RKN/BJT