

8/17/99

LOCHNER
 H. W. LOCHNER, INC.
 2840 PLAZA PLACE, SUITE 202
 RALEIGH, NC 27612
 (919) 571-7111

NC License
 Number F-0159

vhb
 VHB Engineering NC, P.C. (C-3705)
 940 Main Campus Drive, Suite 500
 Raleigh, NC 27606

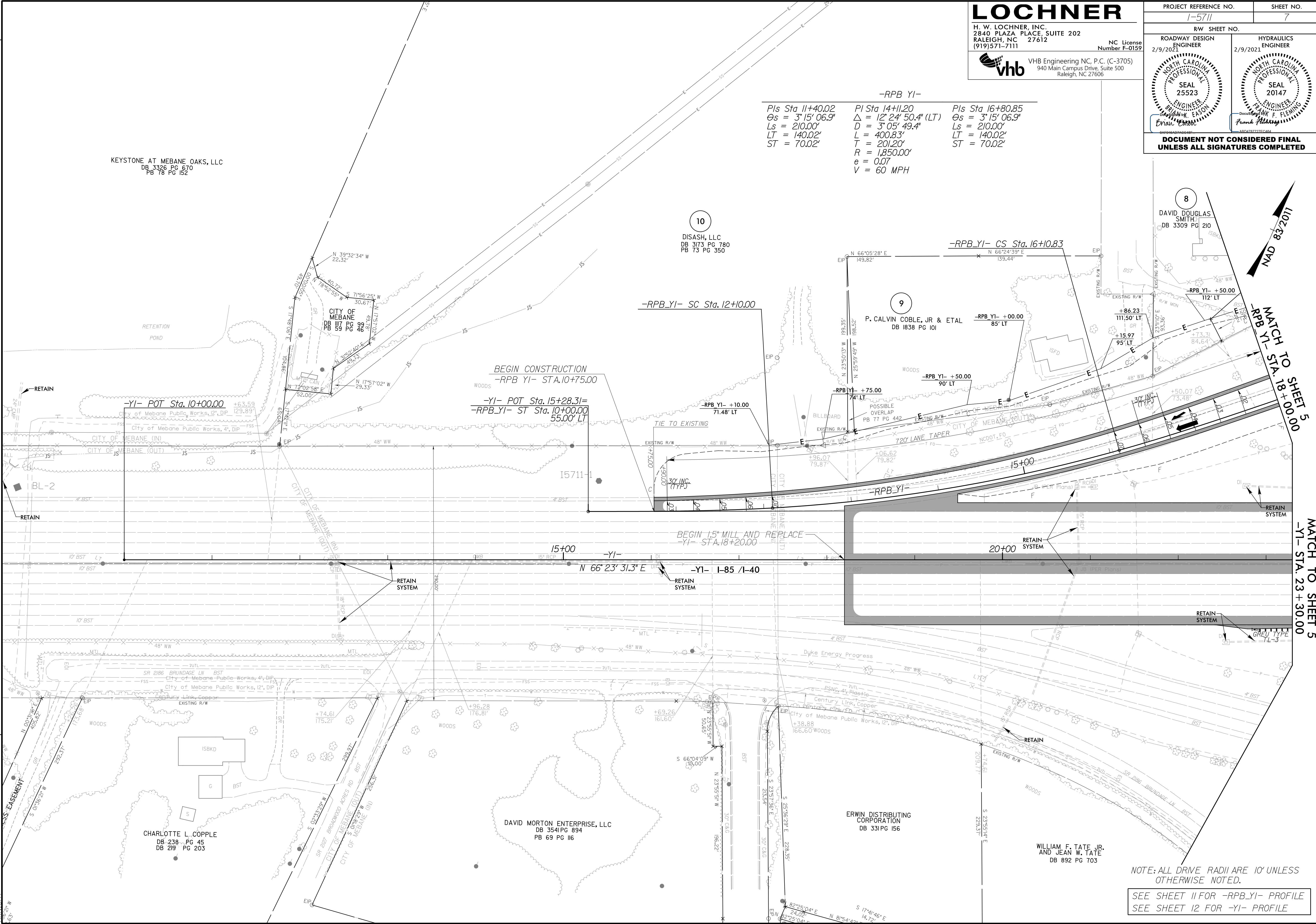
| | |
|--|--|
| PROJECT REFERENCE NO. I-5711 | SHEET NO. 7 |
| RW SHEET NO. 2/9/2021 | HYDRAULICS ENGINEER 2/9/2021 |
| ROADWAY DESIGN ENGINEER 2/9/2021 | SEAL 25523 NORTH CAROLINA PROFESSIONAL ENGINEER BRADLEY K. EASON |
| | SEAL 20147 NORTH CAROLINA PROFESSIONAL ENGINEER FRANK F. FLEMING |
| DOCUMENT NOT CONSIDERED FINAL UNLESS ALL SIGNATURES COMPLETED | |

-RPB_YI-

| | | |
|---|--|--|
| PI Sta 11+40.02 Os = 3' 15' 06.9" Ls = 210.00' LT = 140.02' ST = 70.02' | PI Sta 14+11.20 Δ = 12' 24' 50.4" (LT) D = 3' 05' 49.4" L = 400.83' T = 201.20' R = 1,850.00' e = 0.07 V = 60 MPH | PIs Sta 16+80.85 Os = 3' 15' 06.9" Ls = 210.00' LT = 140.02' ST = 70.02' |
|---|--|--|

REVISIONS

12/15/2020
I-5711 RDY_PSH.07.dgn
2:52:27 PM



NAD 83/2011

MATCH TO SHEET 5
-RPB_YI- STA. 18+00.00

MATCH TO SHEET 5
-YI- STA. 23+30.00

NOTE: ALL DRIVE RADII ARE 10' UNLESS OTHERWISE NOTED.

SEE SHEET 11 FOR -RPB_YI- PROFILE
SEE SHEET 12 FOR -YI- PROFILE