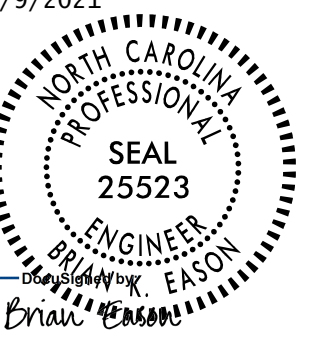



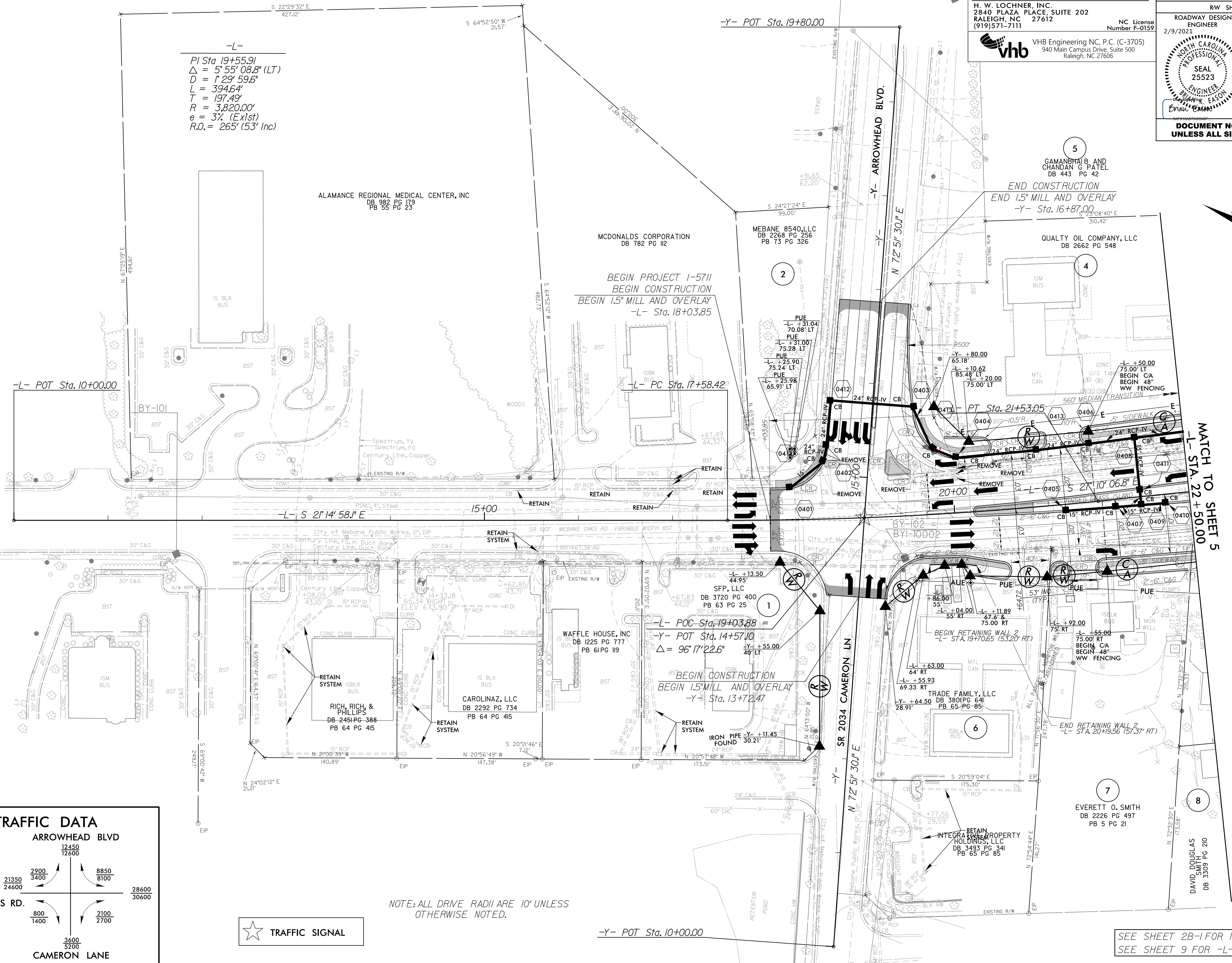
LOCHNER

H. W. LOCHNER, INC.
 2840 PLAZA PLACE, SUITE 202
 RALEIGH, NC 27612
 (919) 571-7111

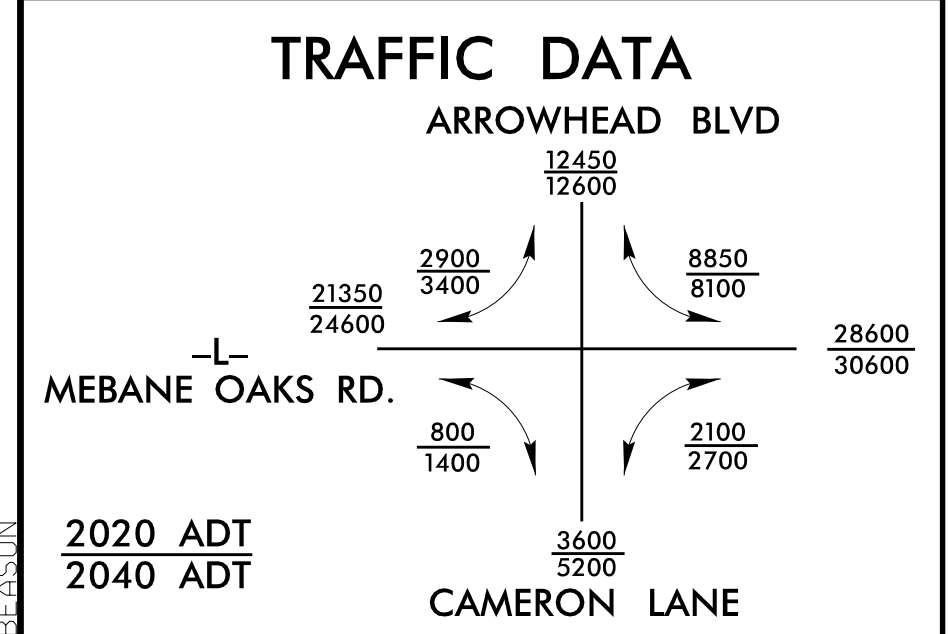
NC License
 Number F-0159

vhb
 VHB Engineering NC, P.C. (C-3705)
 940 Main Campus Drive, Suite 500
 Raleigh, NC 27606

PROJECT REFERENCE NO. 1-5711	SHEET NO. 4
RW SHEET NO.	HYDRAULICS
ROADWAY DESIGN ENGINEER 2/9/2021	HYDRAULICS ENGINEER 2/9/2021
 FRANK EASON SEAL 25523 ENGINEER NORTH CAROLINA PROFESSIONAL	 FRANK FLEMING SEAL 20147 ENGINEER NORTH CAROLINA PROFESSIONAL
DOCUMENT NOT CONSIDERED FINAL UNLESS ALL SIGNATURES COMPLETED	



-L-
 PI Sta. 19+55.91
 $\Delta = 5'55''08.8''$ (LT)
 $D = 1'29''59.6''$
 $L = 394.64'$
 $T = 197.49'$
 $R = 3,820.00'$
 $e = 3\%$ (Exist)
 $R.O. = 265' (53' Inc)$



 TRAFFIC SIGNAL

NOTE: ALL DRIVE RADII ARE 10' UNLESS OTHERWISE NOTED.

SEE SHEET 2B-1 FOR INTERSECTION DETAIL
 SEE SHEET 9 FOR -L- PROFILE

NAD 83/2011

REVISIONS

8/17/99
 12/18/2020
 12/15/21
 REVISION