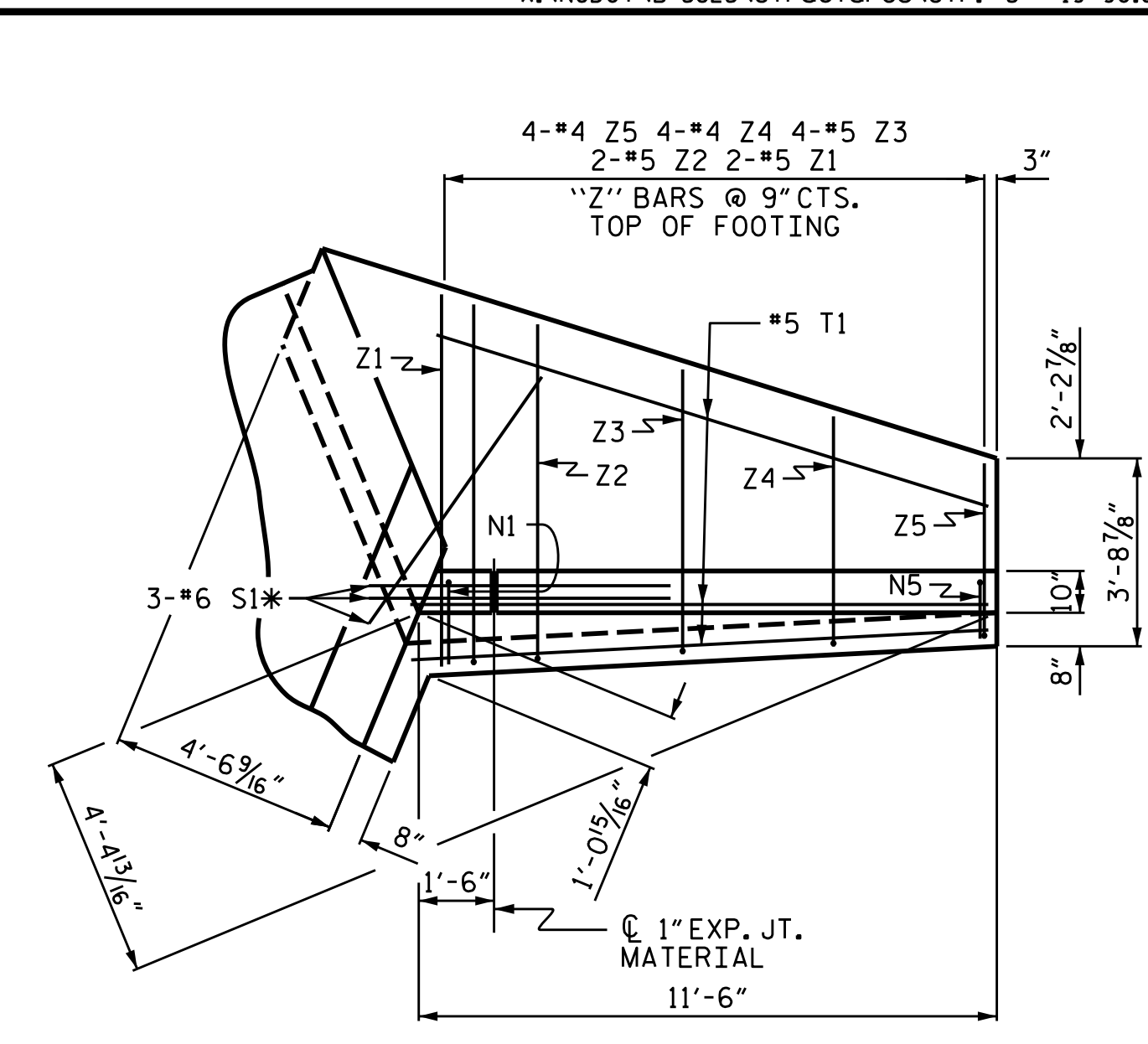
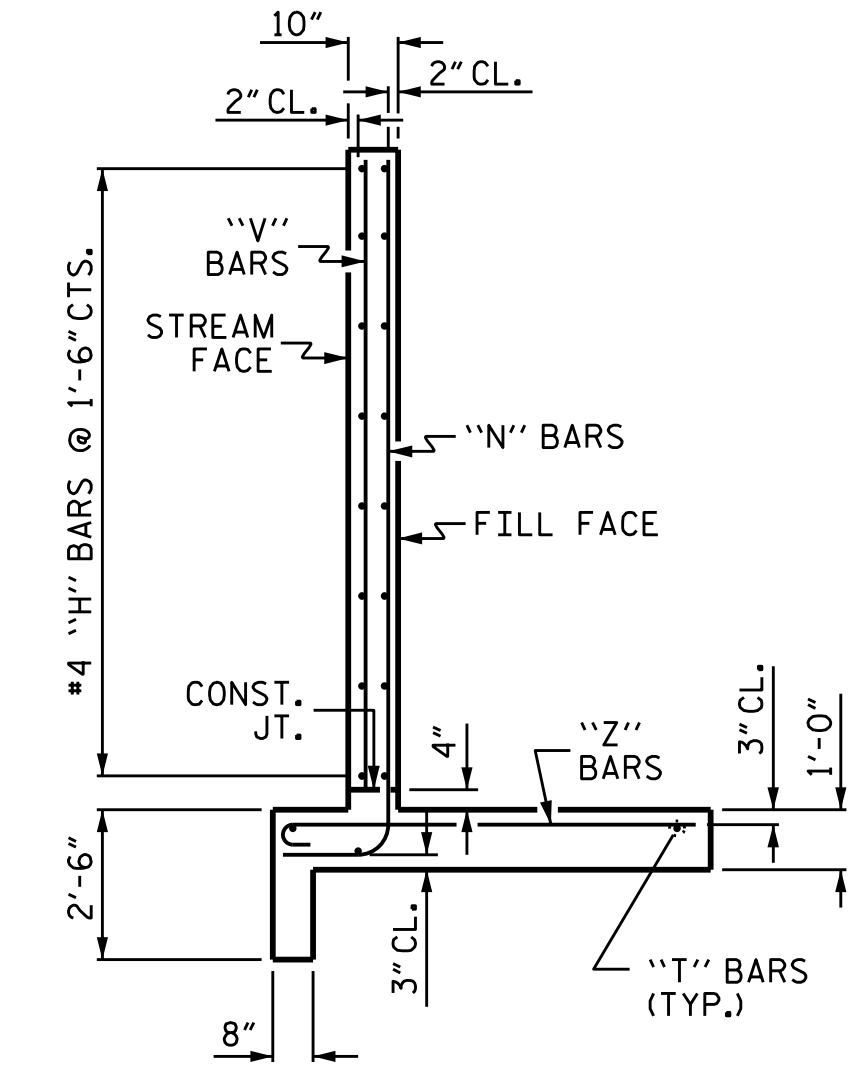


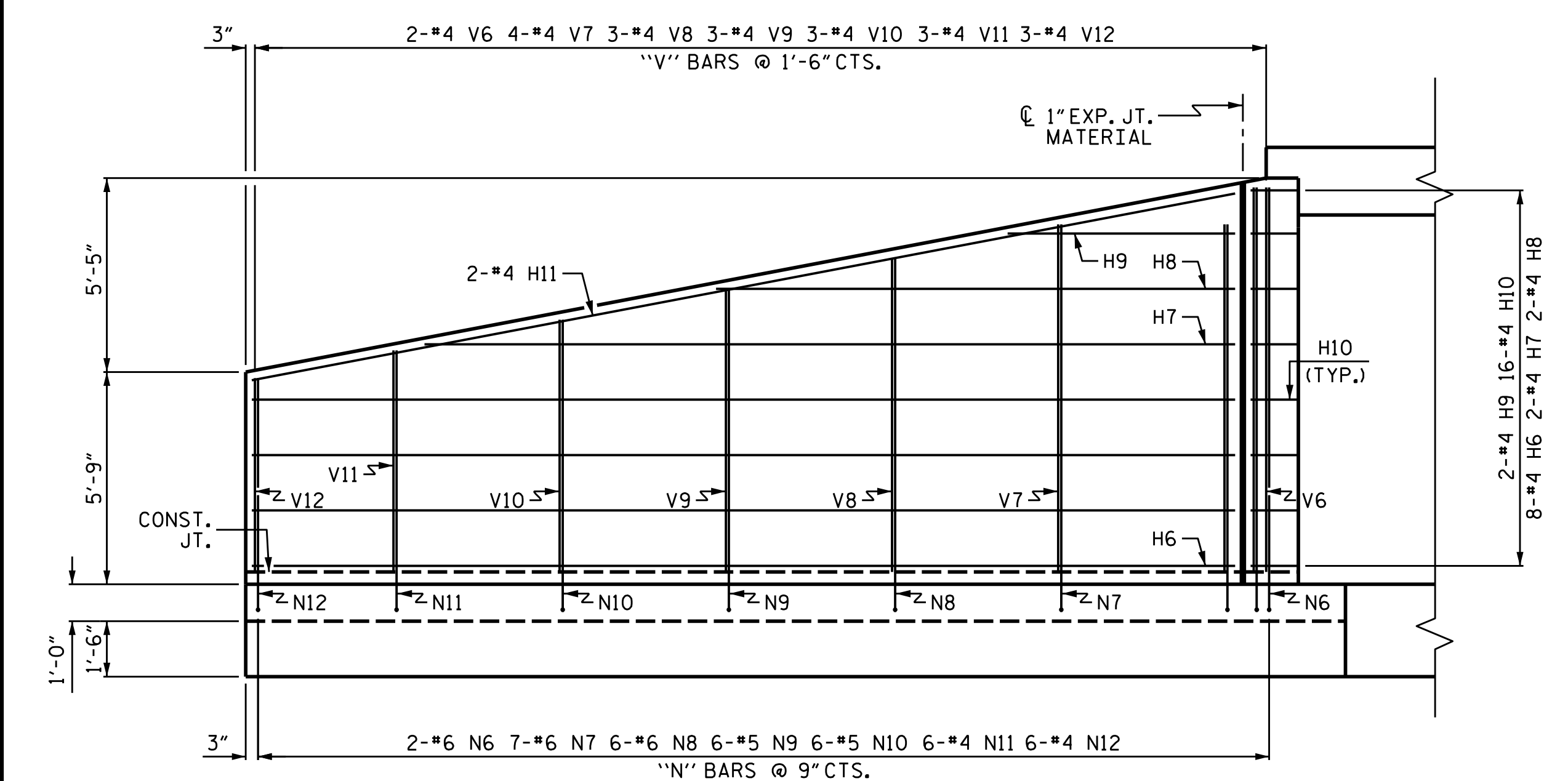
PLAN W1



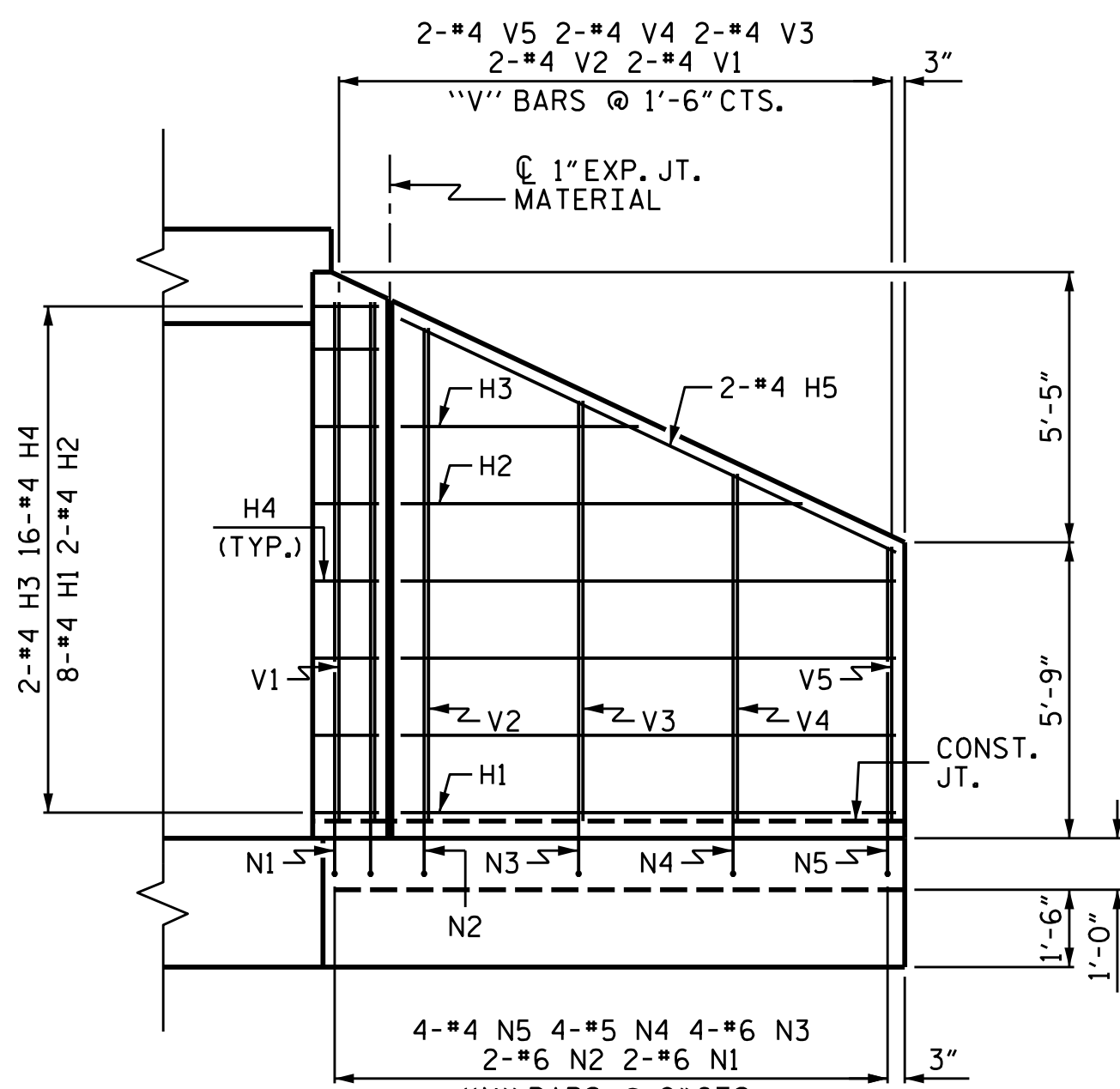
PLAN W2



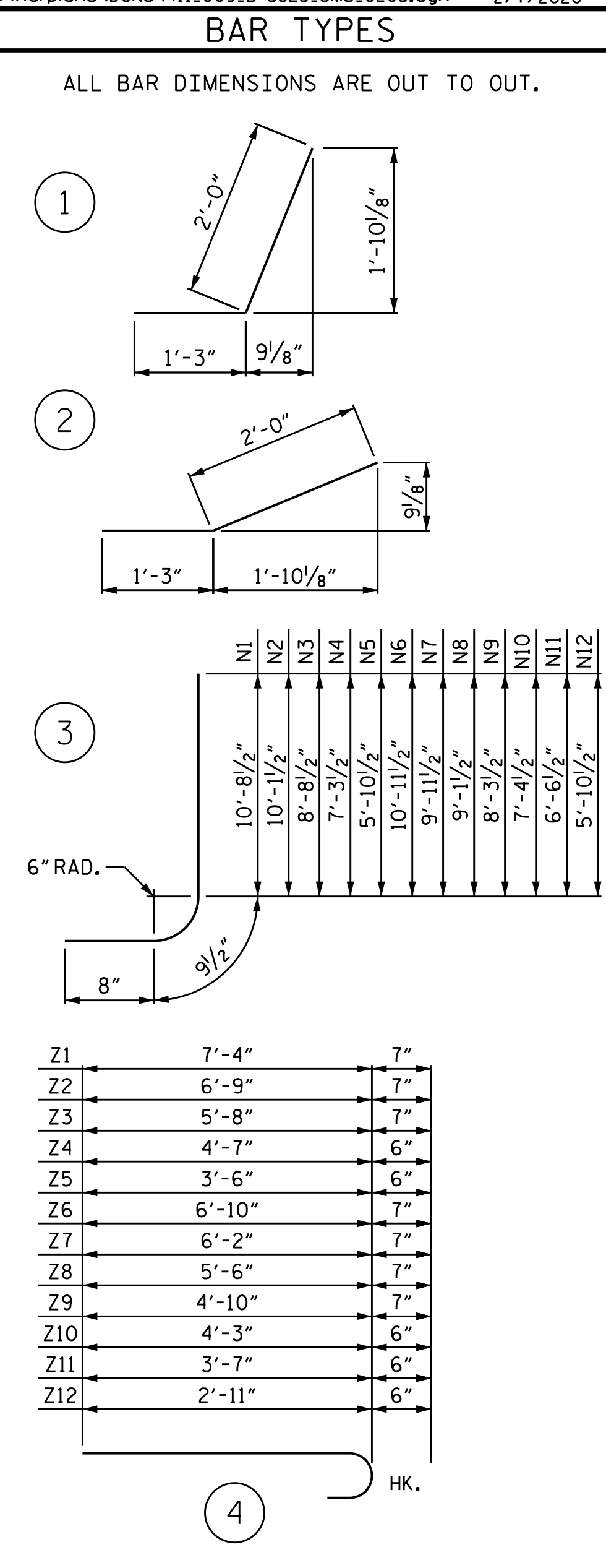
TYPICAL WING SECTION



ELEVATION W1



ELEVATION W2



| BILL OF MATERIAL | | | | | |
|------------------|------|------|--------|---------|-----|
| BAR NO. | SIZE | TYPE | LENGTH | WEIGHT | |
| H1 | 8 | #4 | STR | 9'-7" | 51 |
| H2 | 2 | #4 | STR | 7'-10" | 10 |
| H3 | 2 | #4 | STR | 4'-9" | 6 |
| H4 | 16 | #4 | 1 | 3'-3" | 35 |
| H5 | 2 | #4 | STR | 10'-7" | 14 |
| H6 | 8 | #4 | STR | 26'-7" | 142 |
| H7 | 2 | #4 | STR | 22'-1" | 30 |
| H8 | 2 | #4 | STR | 14'-5" | 19 |
| H9 | 2 | #4 | STR | 6'-9" | 9 |
| H10 | 16 | #4 | 2 | 3'-3" | 35 |
| H11 | 2 | #4 | STR | 27'-11" | 37 |
| N1 | 2 | #6 | 3 | 12'-2" | 37 |
| N2 | 2 | #6 | 3 | 11'-7" | 35 |
| N3 | 4 | #6 | 3 | 10'-2" | 61 |
| N4 | 4 | #5 | 3 | 8'-9" | 37 |
| N5 | 4 | #4 | 3 | 7'-4" | 20 |
| N6 | 2 | #6 | 3 | 12'-5" | 37 |
| N7 | 7 | #6 | 3 | 11'-5" | 120 |
| N8 | 6 | #6 | 3 | 10'-7" | 95 |
| N9 | 6 | #5 | 3 | 9'-9" | 61 |
| N10 | 6 | #5 | 3 | 8'-10" | 55 |
| N11 | 6 | #4 | 3 | 8'-0" | 32 |
| N12 | 6 | #4 | 3 | 7'-4" | 29 |
| S1 | 6 | #6 | STR | 6'-0" | 54 |
| T1 | 3 | #5 | STR | 11'-6" | 36 |
| T2 | 3 | #5 | STR | 28'-6" | 89 |
| V1 | 2 | #4 | STR | 10'-1" | 13 |
| V2 | 2 | #4 | STR | 9'-7" | 13 |
| V3 | 2 | #4 | STR | 8'-2" | 11 |
| V4 | 2 | #4 | STR | 6'-9" | 9 |
| V5 | 2 | #4 | STR | 5'-4" | 7 |
| V6 | 2 | #4 | STR | 10'-5" | 14 |
| V7 | 4 | #4 | STR | 9'-6" | 25 |
| V8 | 3 | #4 | STR | 8'-7" | 17 |
| V9 | 3 | #4 | STR | 7'-9" | 16 |
| V10 | 3 | #4 | STR | 6'-11" | 14 |
| V11 | 3 | #4 | STR | 6'-0" | 12 |
| V12 | 3 | #4 | STR | 5'-3" | 11 |
| Z1 | 2 | #5 | 4 | 7'-11" | 17 |
| Z2 | 2 | #5 | 4 | 7'-4" | 15 |
| Z3 | 4 | #5 | 4 | 6'-3" | 26 |
| Z4 | 4 | #4 | 4 | 5'-1" | 14 |
| Z5 | 4 | #4 | 4 | 4'-0" | 11 |
| Z6 | 2 | #5 | 4 | 7'-5" | 15 |
| Z7 | 6 | #5 | 4 | 6'-9" | 42 |
| Z8 | 6 | #5 | 4 | 6'-1" | 38 |
| Z9 | 6 | #5 | 4 | 5'-5" | 34 |
| Z10 | 6 | #4 | 4 | 4'-9" | 19 |
| Z11 | 6 | #4 | 4 | 4'-1" | 16 |
| Z12 | 6 | #4 | 4 | 3'-5" | 14 |

| | |
|-------------------------------|----------|
| REINFORCING STEEL FOR 2 WINGS | 1609 LBS |
| CLASS A CONCRETE | |
| 2 WINGS | 21.7 CY |
| 1 HEADWALL | 0.7 CY |
| 1 END CURTAIN WALL | 0.5 CY |
| TOTAL | 22.9 CY |

PROJECT NO. B-5825
 YADKIN/FORSYTH COUNTY
 STATION: 19+90.69 -Y2-
 SHEET 5 OF 6

STATE OF NORTH CAROLINA
 DEPARTMENT OF TRANSPORTATION
 RALEIGH

STANDARD WINGS
 FOR
 CONCRETE BOX CULVERT
 H = 10'-0" SLOPE = 2:1

4/14/2020

DOCUMENT NOT CONSIDERED FINAL UNLESS ALL SIGNATURES COMPLETED

TGS ENGINEERS
 706 HILLSBOROUGH STREET
 SUITE 200
 RALEIGH, NC 27603
 PH (919) 773-8887
 CORP. LICENSE NO.: C-0275

| REVISIONS | | | | | | SHEET NO. |
|-----------|-----|-------|-----|-----|-------|-----------------|
| NO. | BY: | DATE: | NO. | BY: | DATE: | C2-5 |
| 1 | | | 3 | | | TOTAL SHEETS 13 |
| 2 | | | 4 | | | |

| | |
|------------------------|--------------|
| ASSEMBLED BY : STM | DATE : 10/19 |
| CHECKED BY : MGC | DATE : 11/19 |
| DRAWN BY : CCJ 01/00 | |
| CHECKED BY : RWW 03/00 | |