

**PLAN OF SILL AND BAFFLE LOCATIONS**

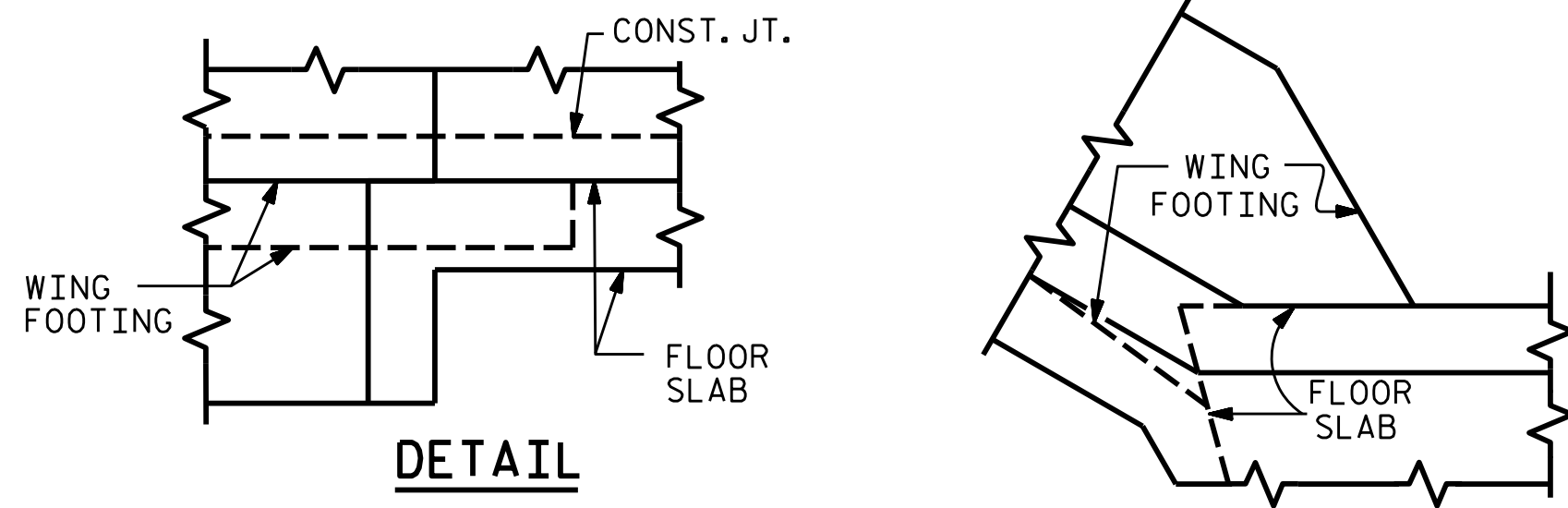
DOCUMENT NOT CONSIDERED FINAL  
UNLESS ALL SIGNATURES COMPLETED

TGS ENGINEERS  
706 HILLSBOROUGH STREET  
SUITE 200  
RALEIGH, NC 27603  
PH (919) 773-8887  
CORP. LICENSE NO.: C-0275

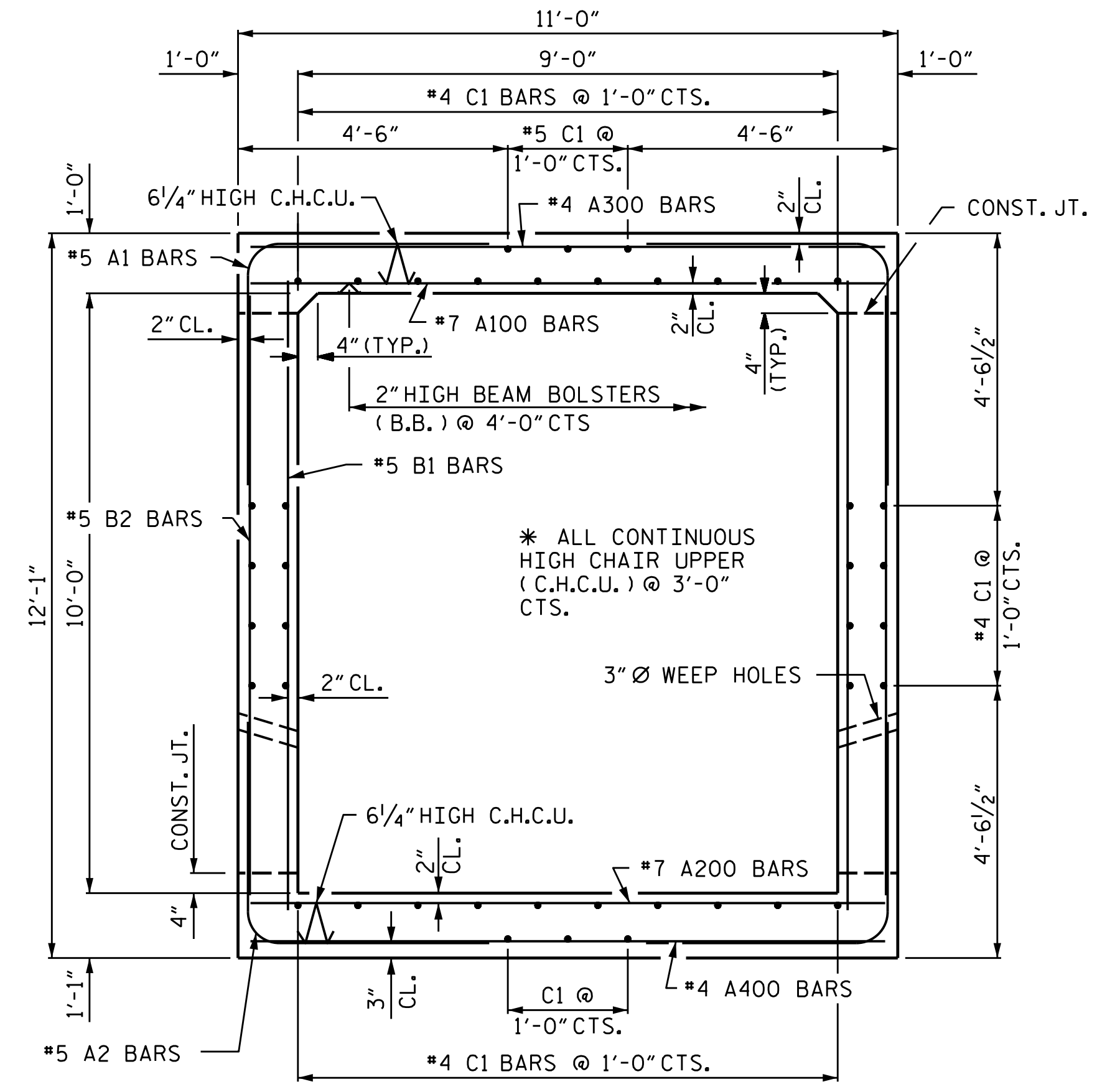
4/14/2020

BAR TYPES		BAR SCHEDULE				
BAR	NO.	SIZE	TYPE	LENGTH	WEIGHT	
A1	394	#5	1	7'-1"	2911	
A2	394	#5	1	6'-9"	2774	
A100	188	#7	STR	10'-7"	4067	
A101	2	#7	STR	10'-1"	41	
A102	2	#7	STR	9'-2"	37	
A103	2	#7	STR	8'-3"	34	
A104	2	#7	STR	7'-4"	30	
A105	2	#7	STR	6'-5"	26	
A106	2	#7	STR	5'-5"	22	
A107	2	#7	STR	4'-6"	18	
A108	2	#7	STR	3'-7"	15	
A109	2	#7	STR	2'-8"	11	
A200	188	#7	STR	10'-7"	4067	
A201	2	#7	STR	10'-1"	41	
A202	2	#7	STR	9'-2"	37	
A203	2	#7	STR	8'-3"	34	
A204	2	#7	STR	7'-4"	30	
A205	2	#7	STR	6'-5"	26	
A206	2	#7	STR	5'-5"	22	
A207	2	#7	STR	4'-6"	18	
A208	2	#7	STR	3'-7"	15	
A209	2	#7	STR	2'-8"	11	
A300	188	#4	STR	10'-7"	1329	
A301	2	#4	STR	10'-1"	13	
A302	2	#4	STR	9'-2"	12	
A303	2	#4	STR	8'-3"	11	
A304	2	#4	STR	7'-4"	10	
A305	2	#4	STR	6'-5"	9	
A306	2	#4	STR	5'-5"	7	
A307	2	#4	STR	4'-6"	6	
A308	2	#4	STR	3'-7"	5	
A309	2	#4	STR	2'-8"	4	
A400	188	#4	STR	10'-7"	1329	
A401	2	#4	STR	10'-1"	13	
A402	2	#4	STR	9'-2"	12	
A403	2	#4	STR	8'-3"	11	
A404	2	#4	STR	7'-4"	10	
A405	2	#4	STR	6'-5"	9	
A406	2	#4	STR	5'-5"	7	
A407	2	#4	STR	4'-6"	6	
A408	2	#4	STR	3'-7"	5	
A409	2	#4	STR	2'-8"	4	
B1	394	#5	STR	10'-6"	4315	
B2	394	#5	STR	9'-8"	3972	
C1	168	#4	STR	39'-3"	4405	
D1	18	#6	STR	1'-8"	45	
G1	4	#4	STR	13'-8"	37	
S2	12	#8	STR	13'-8"	438	

SPLICE LENGTH CHART		
BAR	SIZE	SPLICE LENGTH
C1	#4	2'-5"
B1	#5	2'-4"

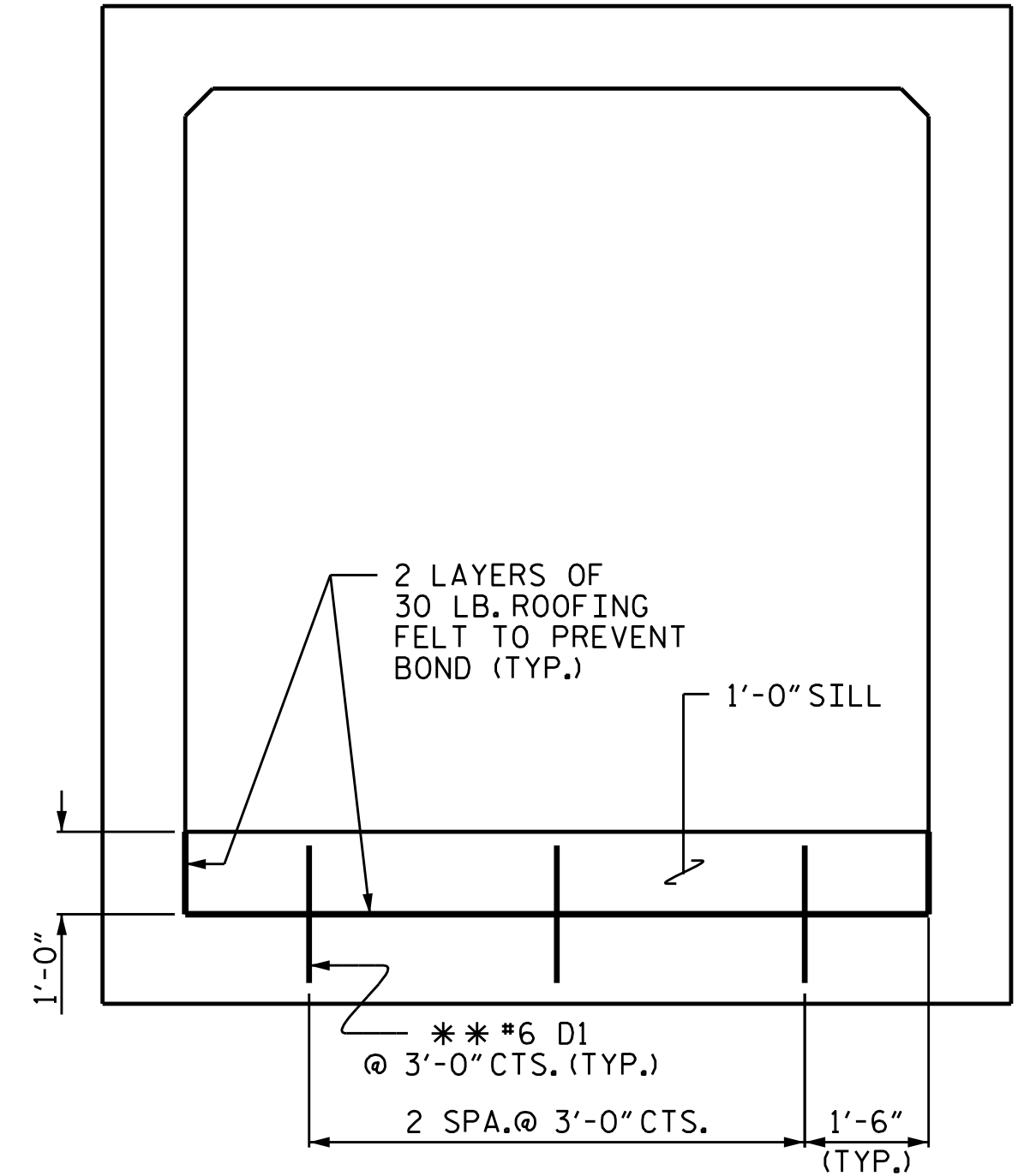


**CONNECTION OF WING FOOTING AND FLOOR SLAB WHEN SLAB IS THICKER THAN FOOTING**

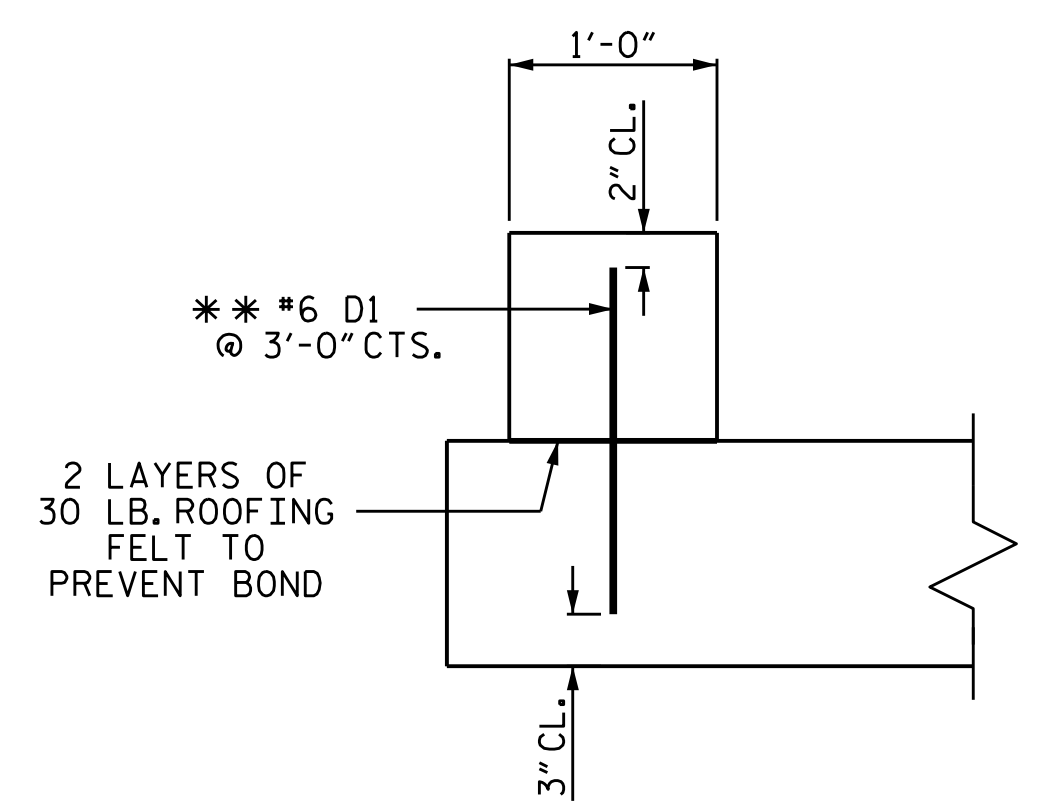


**RIGHT ANGLE SECTION OF BARREL**

THERE ARE 42 "C" BARS IN SECTION OF BARREL



**ELEVATION VIEW NORMAL TO SKEW**



**SECTION THROUGH SILL**

\*\* DOWELS MAY BE PUSHED INTO GREEN CONCRETE AFTER SLAB HAS BEEN FLOAT FINISHED.

**SILL AND BAFFLE DETAILS**

**NOTES**

- NATIVE MATERIAL EXCAVATED FROM THE STREAM BED OR FLOODPLAIN AT THE PROJECT SITE SHALL BE STOCKPILED FOR USE IN THE PROPOSED CULVERT AS SHOWN IN THE "PLAN OF SILL AND BAFFLE LOCATIONS". RIP-RAP MAY BE USED TO SUPPLEMENT THE NATIVE MATERIAL IN THE CULVERT BARREL. IF RIP-RAP IS USED TO LINE THE BARREL, NATIVE MATERIAL SHOULD BE PLACED ON TOP TO FILL VOIDS AND PROVIDE A FLAT SURFACE FOR ANIMAL PASSAGE. NATIVE MATERIAL IS SUBJECT TO APPROVAL BY THE ENGINEER AND MAY BE SUBJECT TO PERMIT CONDITIONS.
- THE ENTIRE COST OF WORK REQUIRED TO PLACE THE EXCAVATED MATERIAL OR SUPPLEMENTAL MATERIAL SHOWN IN THE PLANS SHALL BE INCLUDED IN THE CONTRACT LUMP SUM PRICE BID FOR CULVERT EXCAVATION.
- THE ENTIRE COST OF WORK REQUIRED TO CONSTRUCT THE SILLS & BAFFLES SHALL BE INCLUDED IN THE VARIOUS PAY ITEMS.
- STREAMBED MATERIAL SHOULD BE PLACED LEVEL WITH THE TOP OF THE SILLS/BAFFLES.

PROJECT NO. **B-5825**  
YADKIN/FORSYTH COUNTY  
STATION: **19+90.69 -Y2-**  
SHEET 4 OF 6

STATE OF NORTH CAROLINA  
DEPARTMENT OF TRANSPORTATION  
RALEIGH

**SINGLE 9 FT. X 10 FT. CONCRETE BOX CULVERT 129° SKEW**

REVISIONS						SHEET NO.	
NO.	BY:	DATE:	NO.	BY:	DATE:	C2-4	
1			3			TOTAL SHEETS	
2			4			13	

REVISED 8-28-92 BY E.L.R. CHECKED BY G.R.P.  
REVISED 8-22-89 BY A.R.B. CHECKED BY C.R.K.  
REDRAWN 8-22-89  
REVISED 11-19-99 BY M.M. CHECKED BY R.W.W.

DRAWN BY :	STM	DATE :	09/19
CHECKED BY :	MGC	DATE :	11/19
DESIGN ENGINEER OF RECORD :	STM	DATE :	02/20