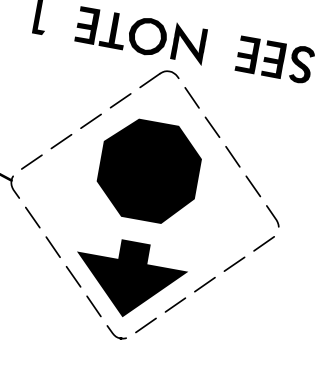
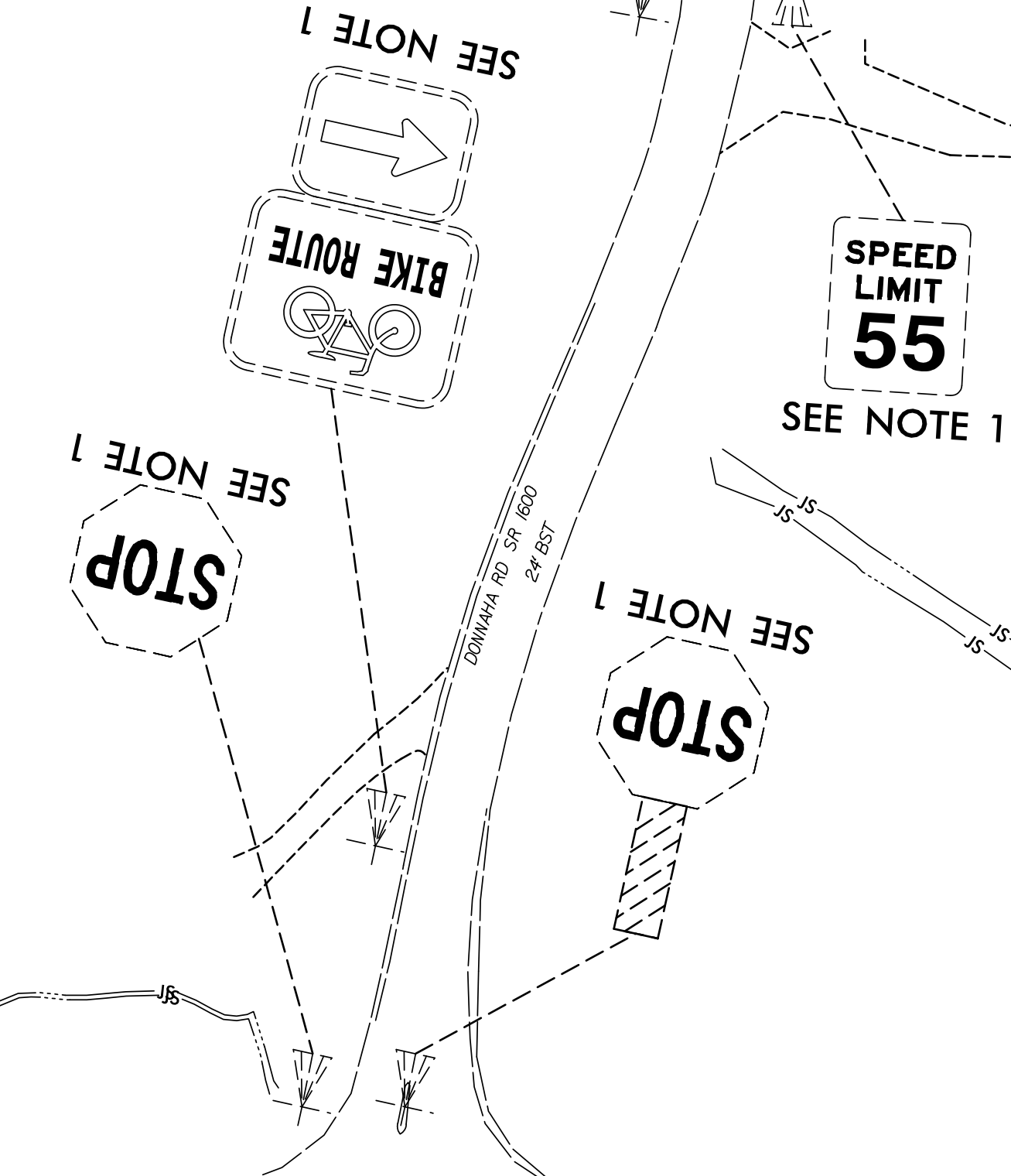


8/17/99

MATCHLINE -Y2- STA. 17+00.00

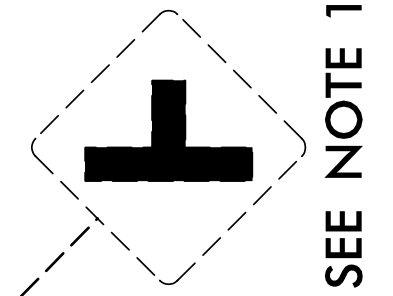
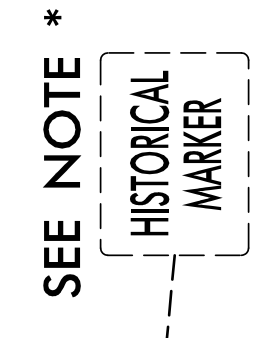
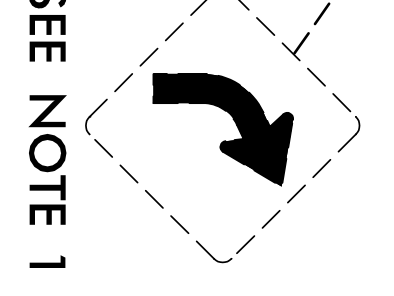
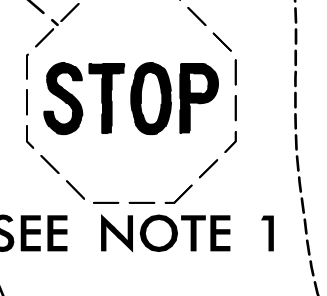
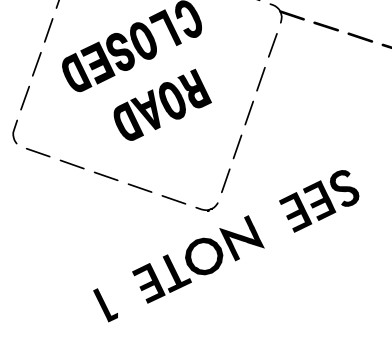
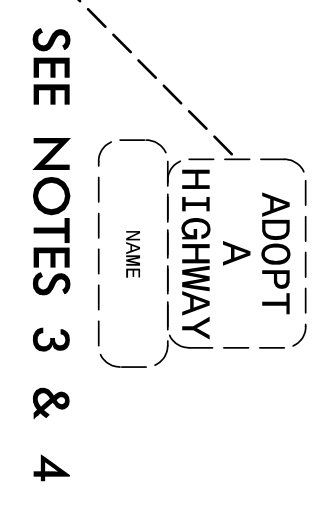
MATCHLINE -L- STA. 40+50.00
SEE SHEET SIGN-7

3/23/2020_5825\traffic\signing\cadd\signing_layout\plans\250_015_B-5825_Sgn_SON_05.dgn
M:\cadd\traffic\signing\cadd\signing_layout\plans\250_015_B-5825_Sgn_SON_05.dgn



NOTE: NO SIGNS FOUND BETWEEN START OF CONSTRUCTION AT -Y2- STA. 12+00 AND -Y2- STA. 17+00.

* TRAFFIC SERVICES UNIT WILL REMOVE AND REINSTALL HISTORICAL MARKER AND ROAD SIGN.

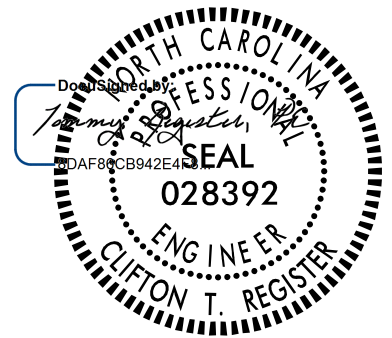


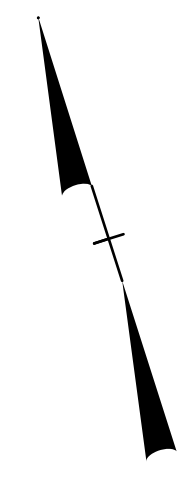
END TIP PROJECT B-5825
-L- POC Sta. 54+00.00

PROJECT NOTES

- 1 DISPOSAL OF SIGN SYSTEM, U-CHANNEL
- 2 DISPOSAL OF SUPPORT, WOOD
- 3 DISPOSAL OF SUPPORT, U-CHANNEL
- 4 RELOCATE SIGN ON NEW SUPPORTS (MATCH EXISTING)

EXISTING SIGNS

TIP NO. B-5825	SHEET NO. SIGN-5
APPROVED: _____ DATE: 3/23/2020 10:59 AM PDT	
SEAL 	
DOCUMENT NOT CONSIDERED FINAL UNLESS ALL SIGNATURES COMPLETED	
TGS ENGINEERS 706 HILLSBOROUGH ST., SUITE 200 RALEIGH, NC 27603 PH (919) 773-8887 CORP. LICENSE NO.: C-0275	



TO WINSTON SALEM