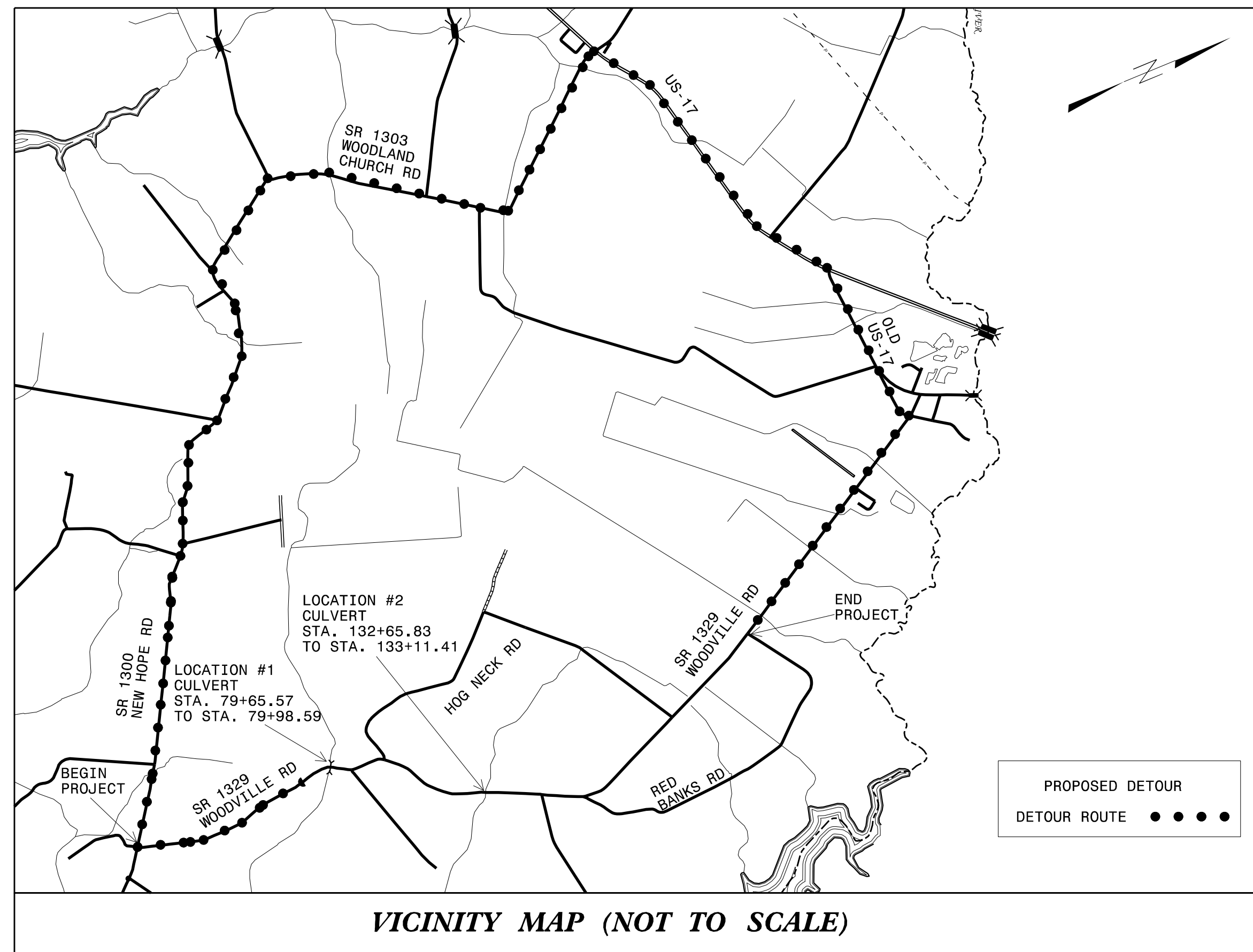
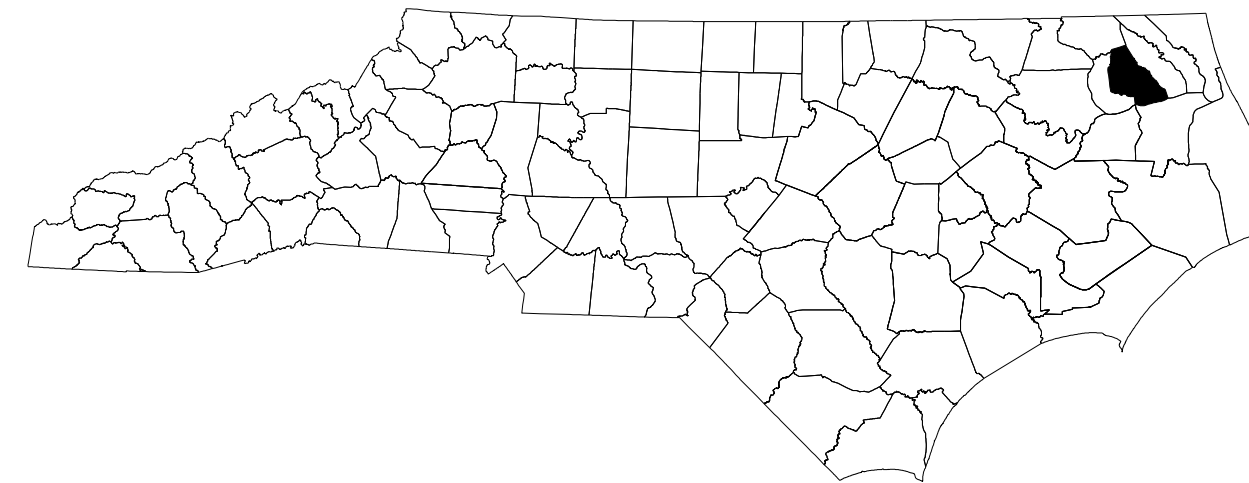


STATE OF NORTH CAROLINA  
DIVISION OF HIGHWAYS

TRANSPORTATION MANAGEMENT PLAN

PERQUIMANS COUNTY



VICINITY MAP (NOT TO SCALE)

PLAN PREPARED FOR N.C.D.O.T. BY:

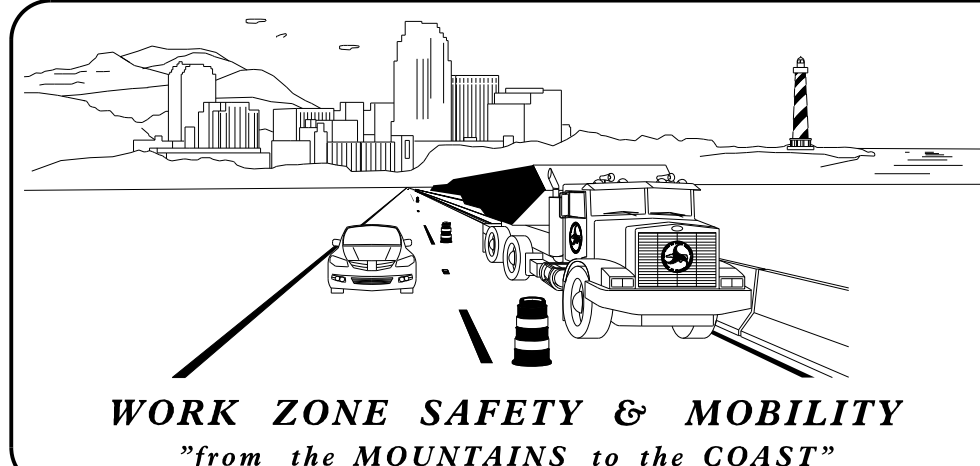
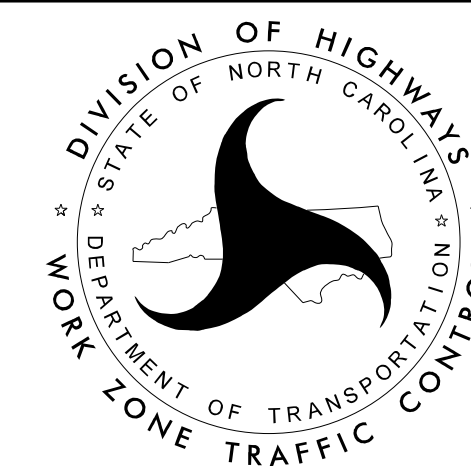
**ATKINS** 1616 EAST MILLBROOK ROAD, SUITE 160  
RALEIGH, NORTH CAROLINA 27609  
(919) 876-6888 NCBEES #F-0326

PLANS PREPARED BY:

MARK D. MCADAMS, P.E.  
PROJECT ENGINEER  
MILTON R. ACEVEDO  
PROJECT DESIGN ENGINEER

NCDOT CONTACTS:

PROJECT ENGINEER  
PROJECT DESIGN ENGINEER



**INDEX OF SHEETS**

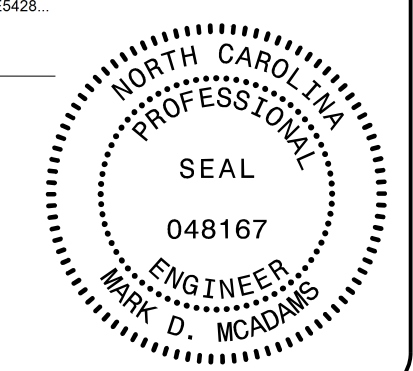
| SHEET NO. | TITLE  |
|-----------|--|
| TMP-1     | TITLE SHEET, VICINITY MAP, AND INDEX OF SHEETS |
| TMP-2-3   | TEMPORARY TRAFFIC CONTROL PHASE I DETAIL       |
| TMP-4-5   | TEMPORARY TRAFFIC CONTROL PHASE II DETAIL      |

**PHASING**

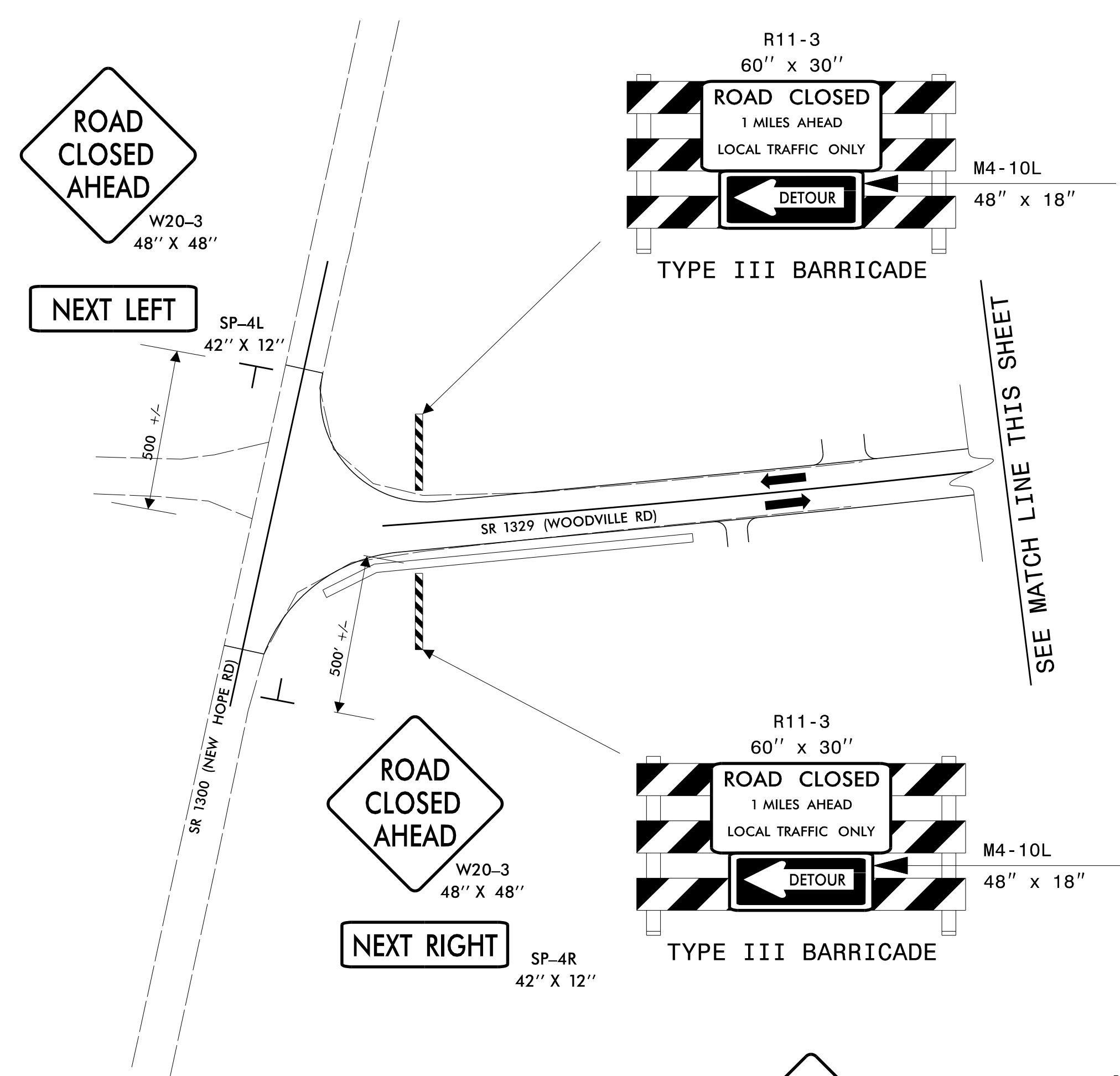
1. PHASE 1 WILL CONSIST OF CULVERT CONSTRUCTION AT LOCATION #1 (STA. 79+65.74 TO STA. 79+98.42). PHASE 2 WILL CONSIST OF CULVERT CONSTRUCTION AT LOCATION #2 (STA. 132+65.83 TO STA. 133+11.41).
2. ROAD CLOSURES FOR BOTH CULVERTS CANNOT OCCUR AT THE SAME TIME. DETOUR SIGNS MUST BE KEPT IN PLACE FOR THE DURATION OF BOTH CULVERTS WORK (INCLUDING DURING PHASING CHANGE).
3. CONSTRUCTION AT FIRST CULVERT MUST BE COMPLETED (AND ROAD CLOSURE DEVICES REMOVED) BEFORE ANY WORK CAN BEGIN ON SECOND CULVERT.

DOCUMENT NOT CONSIDERED FINAL  
UNLESS ALL SIGNATURES COMPLETED

APPROVED: *Mark McAdams*  
DATE: 2/13/2020



TIP PROJECT: R-5740



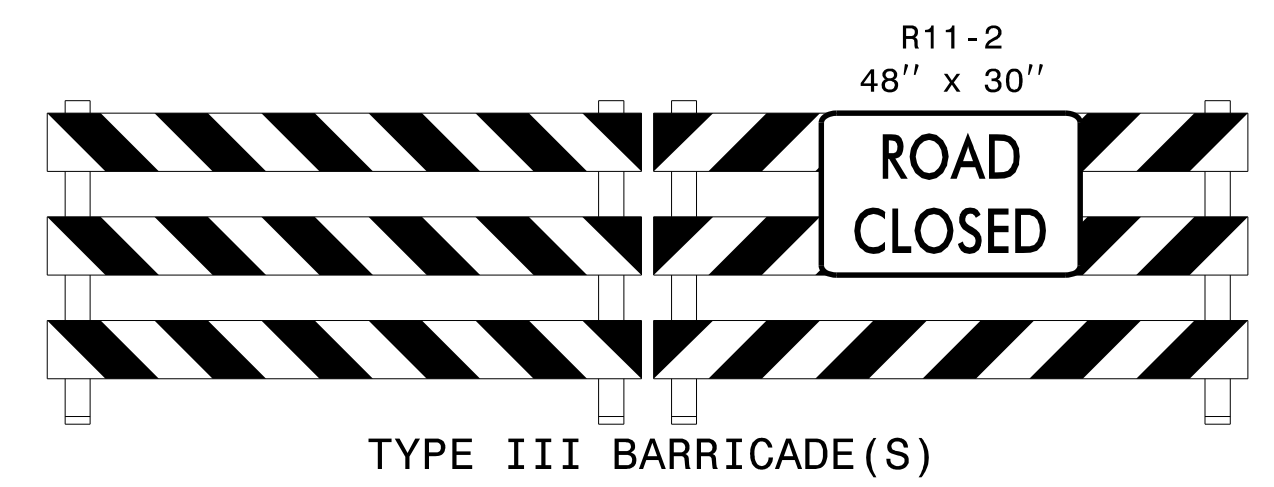
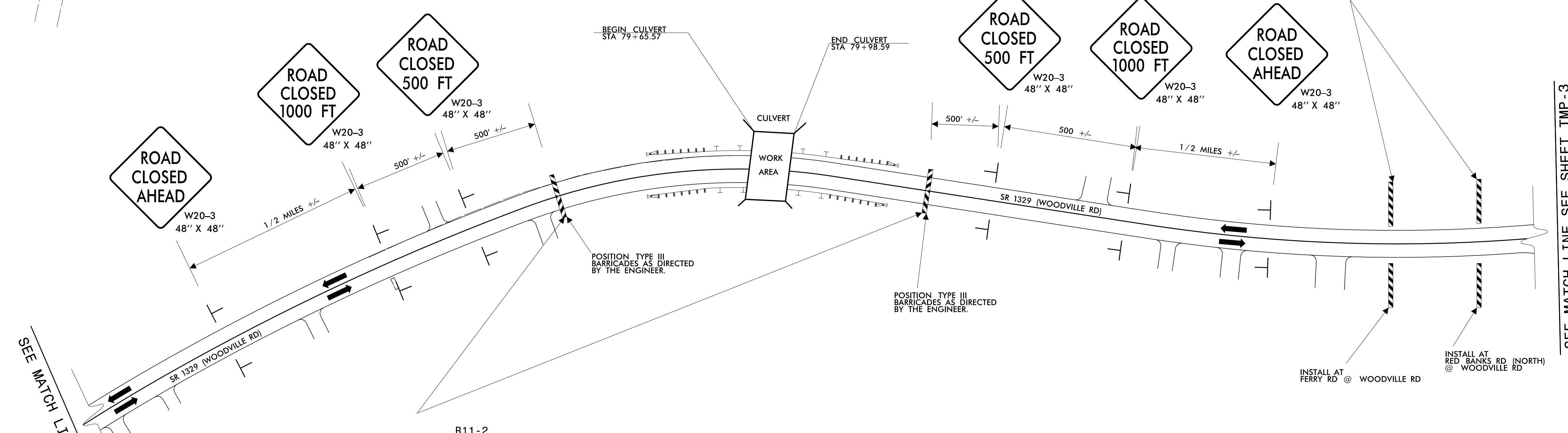
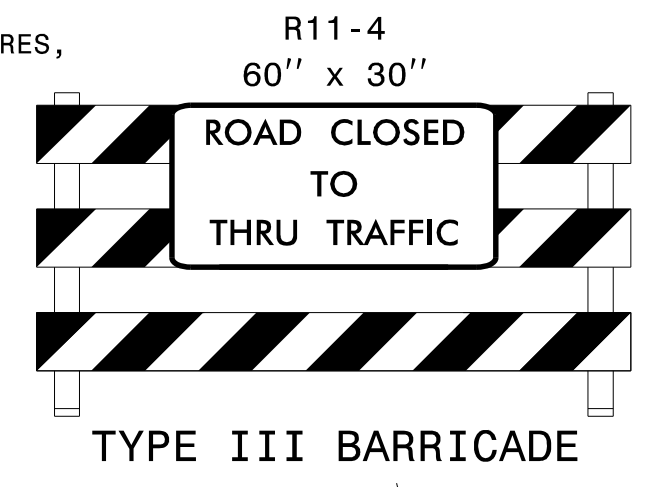
ROADWAY STANDARD DRAWINGS:

THE FOLLOWING ROADWAY STANDARDS AS SHOWN IN "ROADWAY STANDARD DRAWINGS" - N.C. DEPARTMENT OF TRANSPORTATION - RALEIGH, N.C., DATED JANUARY 2018 ARE APPLICABLE TO THIS PROJECT AND BY REFERENCE HEREBY ARE CONSIDERED A PART OF THESE PLANS:

| STD. NO. | TITLE                         |
|----------|-------------------------------|
| 1101.01  | WORK ZONE WARNING SIGNS       |
| 1101.02  | TEMPORARY LANE CLOSURES       |
| 1101.03  | TEMPORARY ROAD CLOSURES       |
| 1101.04  | TEMPORARY SHOULDER CLOSURES   |
| 1101.11  | TRAFFIC CONTROL DESIGN TABLES |
| 1110.01  | STATIONARY WORK ZONE SIGNS    |
| 1130.01  | DRUMS                         |
| 1135.01  | CONES                         |
| 1145.01  | BARRICADES                    |
| 1150.01  | FLAGGERS                      |
| 1180.01  | SKINNY DRUMS                  |

GENERAL NOTES:

- INSTALLATION OF TEMPORARY ROUTE MARKERS, DESTINATION SIGNS, AND ANY NECESSARY MODIFICATIONS TO EXISTING OR PROPOSED REGULATORY OR WARNING SIGNS WILL BE MADE BY OTHERS (STATE OR TOWN FORCES) UNLESS OTHERWISE DESIGNATED IN PLANS. PROVIDE A MINIMUM 21 CALENDAR DAY NOTICE TO STATE FORCES BEFORE A ROADWAY IS CLOSED TO TRAFFIC SUCH THAT THE NECESSARY PROVISIONS CAN BE MADE TO INFORM LOCAL EMERGENCY AND LAW ENFORCEMENT PERSONNEL, SCHOOLS OR ANY OTHER PARTIES AFFECTED BY THE ROAD CLOSURE.
- INSTALL SIGNS BEFORE THE BARRICADES WHEN CLOSING THE ROADWAY TO TRAFFIC. REMOVE BARRICADES BEFORE SIGNS WHEN OPENING THE ROADWAY TO TRAFFIC. INSTALL/REMOVE SIGNS AND BARRICADES WITHIN THE SAME CALENDAR DAY.
- POSITION WING BARRICADES ON THE SHOULDERS AND SLOPE THE STRIPES DOWNWARD IN THE DIRECTION TOWARD WHICH TRAFFIC MUST TURN ON DETOURING.
- USE ADDITIONAL TYPE III BARRICADES IN STAGGERED LOCATIONS SUPPLEMENTED WITH SIGN R11-4 "ROAD CLOSED TO THRU TRAFFIC" IN THE EVENT THAT TRAFFIC MUST BE MAINTAINED BEYOND THE DETOUR POINT.
- SEE ROADWAY STANDARD DRAWING 1101.03, SHEET 1 OF 9, FOR TEMPORARY ROAD CLOSURE.
- PROPOSED WORK NOT RELATED TO CULVERT CONSTRUCTION TO BE PERFORMED USING LANE OR SHOULDER CLOSURES, IF WARRANTED, PER APPLICABLE STANDARDS.



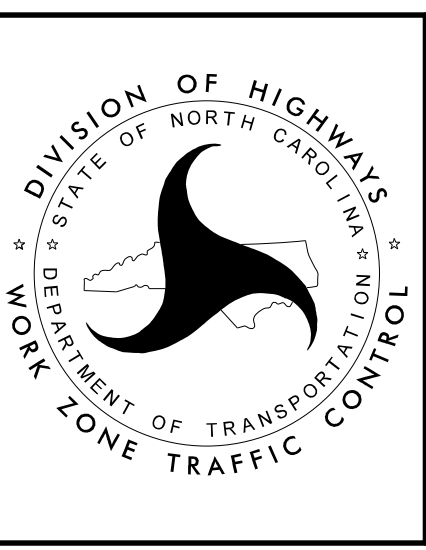
| LEGEND |                           |
|--------|---------------------------|
|        | DIRECTION OF TRAFFIC FLOW |
|        | BARRICADE (TYPE III)      |
|        | STATIONARY SIGN           |

APPROVED: *Mark McAdams*  
 DATE: 2/13/2020

DocuSigned by:  
 Mark D. McAdams  
 D14600C110E5428...

SEAL  
 048167  
 ENGINEER  
 MARK D. MCADAMS

**DOCUMENT NOT CONSIDERED FINAL  
 UNLESS ALL SIGNATURES COMPLETED**



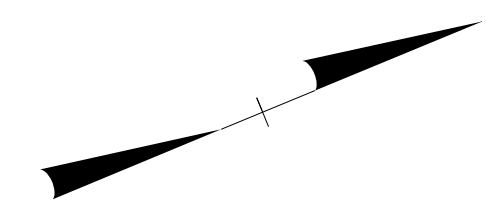
PHASE 1 ROAD CLOSURE  
 SR 1329 (WOODVILLE ROAD)  
 CULVERT STA 79+65.57  
 TO STA 79+98.59

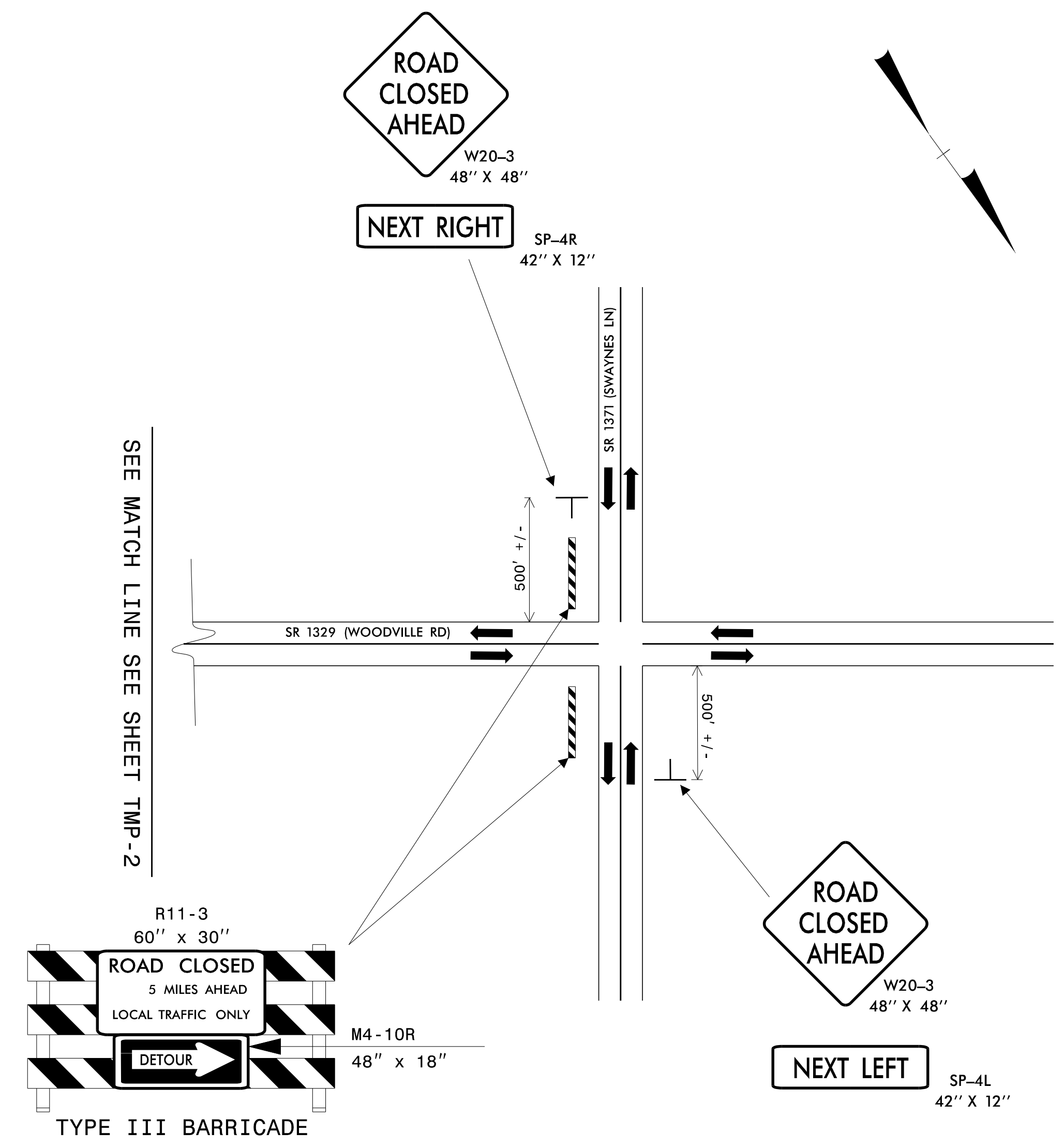
2/13/2020  
 G:\Transportation\Roadway\NCDOT\Division01\NR-5740\Traffic\RS5740 TMP.dgn  
 User:ACEV7019

SEE MATCH LINE THIS SHEET

SEE MATCH LINE THIS SHEET

SEE MATCH LINE SEE SHEET TMP-3





ROADWAY STANDARD DRAWINGS:

THE FOLLOWING ROADWAY STANDARDS AS SHOWN IN "ROADWAY STANDARD DRAWINGS" - N.C. DEPARTMENT OF TRANSPORTATION - RALEIGH, N.C., DATED JANUARY 2018 ARE APPLICABLE TO THIS PROJECT AND BY REFERENCE HEREBY ARE CONSIDERED A PART OF THESE PLANS:

| STD. NO. | TITLE                         |
|----------|-------------------------------|
| 1101.01  | WORK ZONE WARNING SIGNS       |
| 1101.02  | TEMPORARY LANE CLOSURES       |
| 1101.03  | TEMPORARY ROAD CLOSURES       |
| 1101.04  | TEMPORARY SHOULDER CLOSURES   |
| 1101.11  | TRAFFIC CONTROL DESIGN TABLES |
| 1110.01  | STATIONARY WORK ZONE SIGNS    |
| 1130.01  | DRUMS                         |
| 1135.01  | CONES                         |
| 1145.01  | BARRICADES                    |
| 1150.01  | FLAGGERS                      |
| 1180.01  | SKINNY DRUMS                  |

GENERAL NOTES:

1. INSTALLATION OF TEMPORARY ROUTE MARKERS, DESTINATION SIGNS, AND ANY NECESSARY MODIFICATIONS TO EXISTING OR PROPOSED REGULATORY OR WARNING SIGNS WILL BE MADE BY OTHERS (STATE OR TOWN FORCES) UNLESS OTHERWISE DESIGNATED IN PLANS. PROVIDE A MINIMUM 21 CALENDAR DAY NOTICE TO STATE FORCES BEFORE A ROADWAY IS CLOSED TO TRAFFIC SUCH THAT THE NECESSARY PROVISIONS CAN BE MADE TO INFORM LOCAL EMERGENCY AND LAW ENFORCEMENT PERSONNEL, SCHOOLS OR ANY OTHER PARTIES AFFECTED BY THE ROAD CLOSURE.
2. INSTALL SIGNS BEFORE THE BARRICADES WHEN CLOSING THE ROADWAY TO TRAFFIC. REMOVE BARRICADES BEFORE SIGNS WHEN OPENING THE ROADWAY TO TRAFFIC. INSTALL/REMOVE SIGNS AND BARRICADES WITHIN THE SAME CALENDAR DAY.
3. POSITION WING BARRICADES ON THE SHOULDERS AND SLOPE THE STRIPES DOWNWARD IN THE DIRECTION TOWARD WHICH TRAFFIC MUST TURN ON DETOURING.
4. USE ADDITIONAL TYPE III BARRICADES IN STAGGERED LOCATIONS SUPPLEMENTED WITH SIGN R11-4 "ROAD CLOSED TO THRU TRAFFIC" IN THE EVENT THAT TRAFFIC MUST BE MAINTAINED BEYOND THE DETOUR POINT.
5. SEE ROADWAY STANDARD DRAWING 1101.03, SHEET 1 OF 9, FOR TEMPORARY ROAD CLOSURE.
6. PROPOSED WORK NOT RELATED TO CULVERT CONSTRUCTION TO BE PERFORMED USING LANE OR SHOULDER CLOSURES, IF WARRANTED, PER APPLICABLE STANDARDS.

SEE MATCH LINE SEE SHEET TMP-2

**LEGEND**

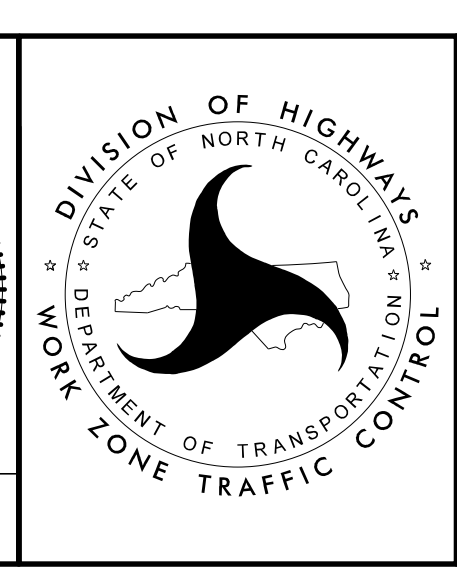
- DIRECTION OF TRAFFIC FLOW
- BARRICADE (TYPE III)
- STATIONARY SIGN

APPROVED: *Mark McAdams*  
D14609C110E5428...

DATE: 2/13/2020

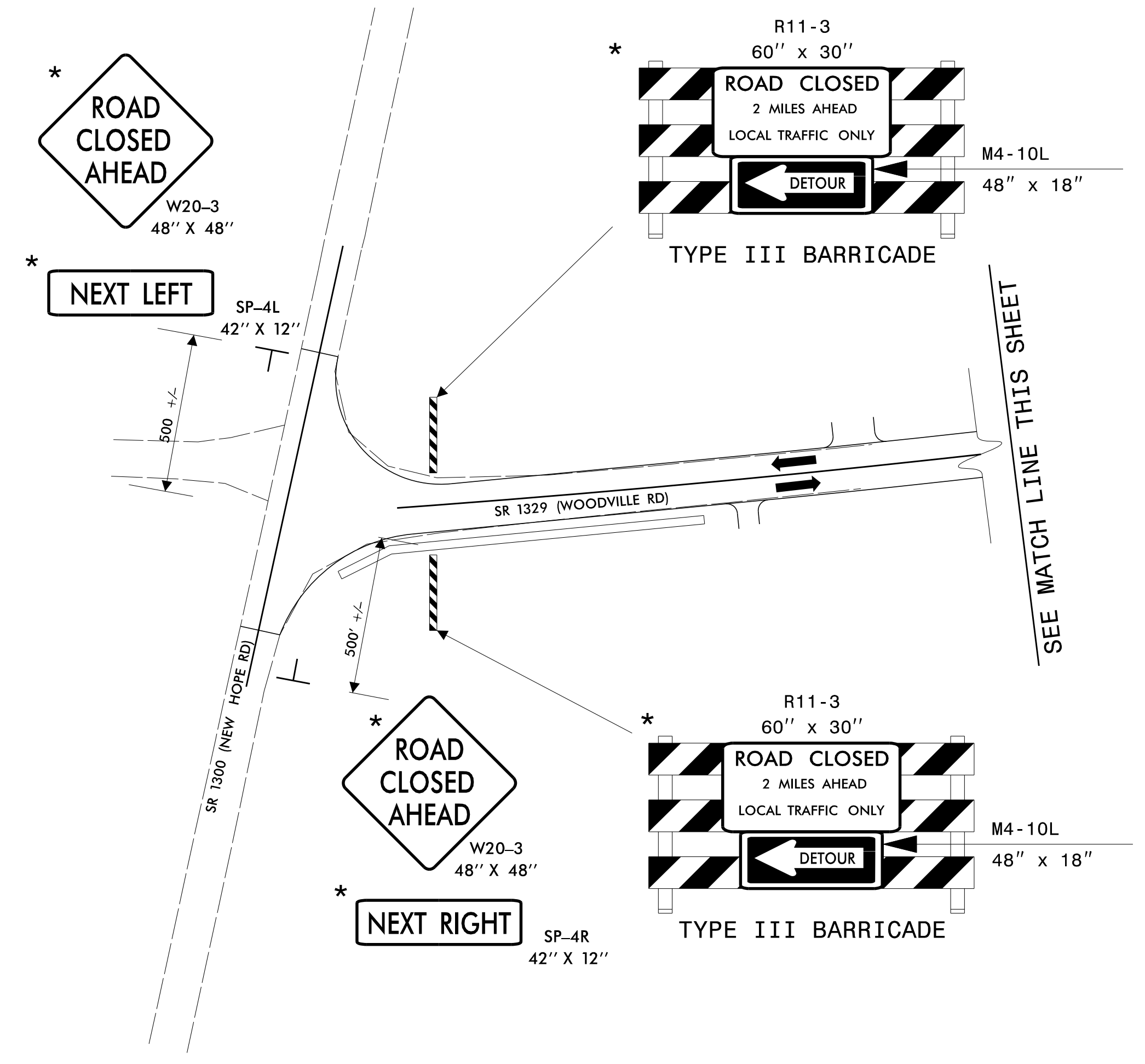
**SEAL**  
 NORTH CAROLINA PROFESSIONAL ENGINEER  
 MARK D. MCAIDAMS  
 048167

**DOCUMENT NOT CONSIDERED FINAL UNLESS ALL SIGNATURES COMPLETED**



**PHASE 1 ROAD CLOSURE**  
**SR 1329 (WOODVILLE ROAD)**

**CULVERT STA 79+65.57**  
**TO STA 79+98.59**



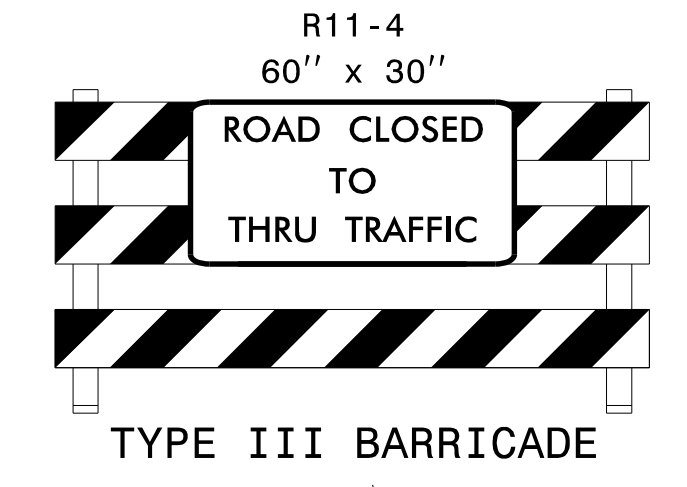
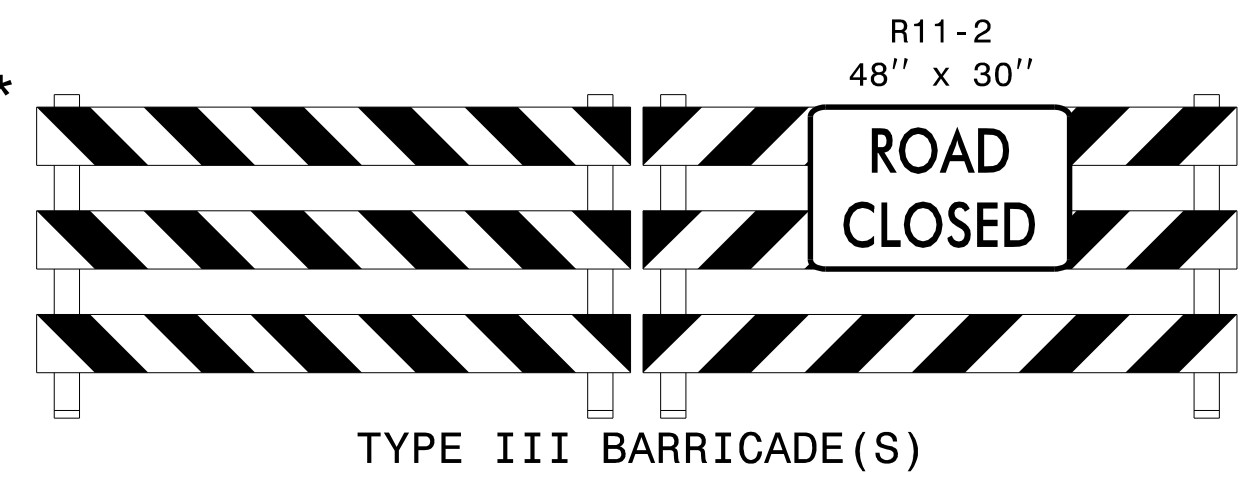
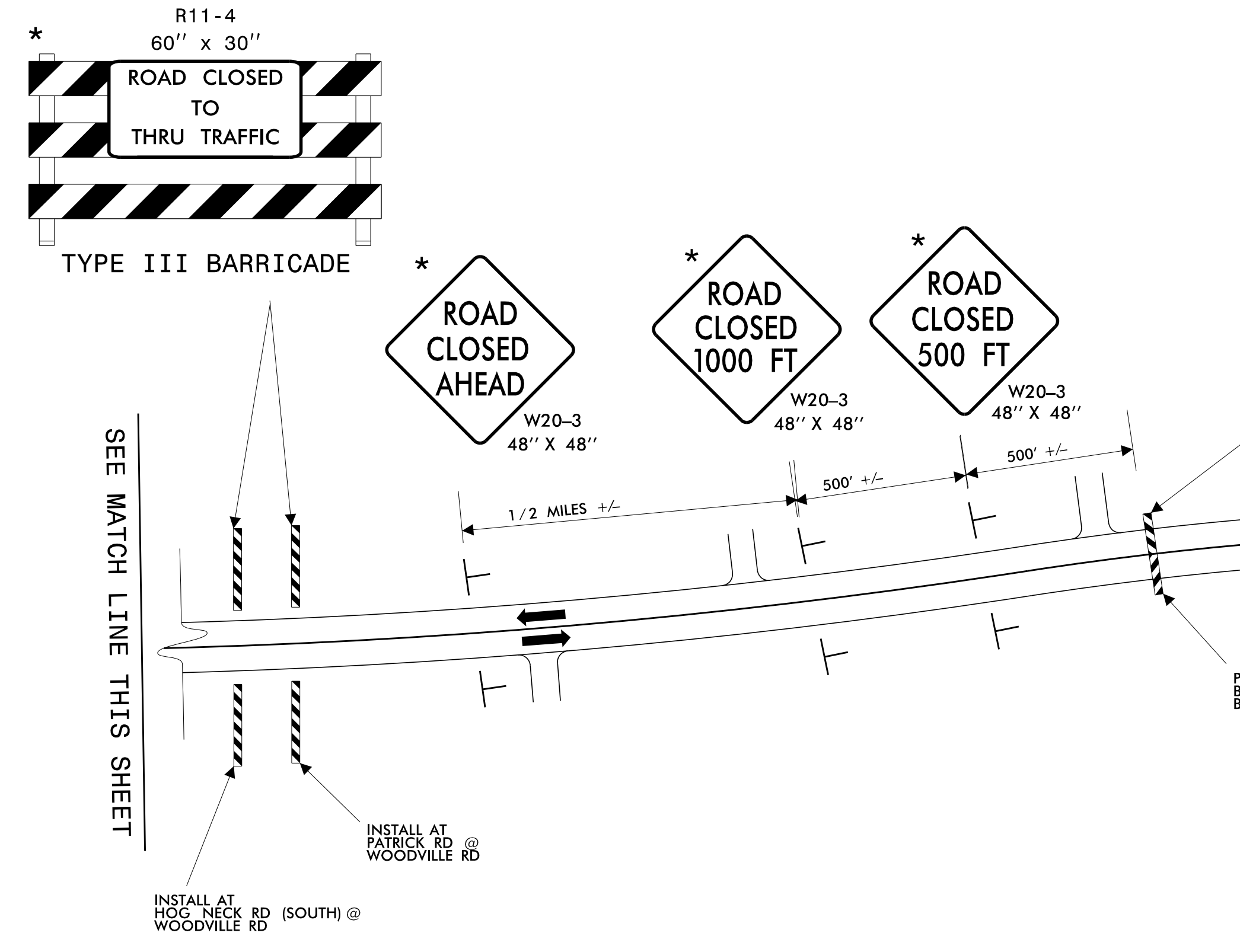
ROADWAY STANDARD DRAWINGS:

THE FOLLOWING ROADWAY STANDARDS AS SHOWN IN "ROADWAY STANDARD DRAWINGS" - N.C. DEPARTMENT OF TRANSPORTATION - RALEIGH, N.C., DATED JANUARY 2018 ARE APPLICABLE TO THIS PROJECT AND BY REFERENCE HEREBY ARE CONSIDERED A PART OF THESE PLANS:

| STD. NO. | TITLE                         |
|----------|-------------------------------|
| 1101.01  | WORK ZONE WARNING SIGNS       |
| 1101.02  | TEMPORARY LANE CLOSURES       |
| 1101.03  | TEMPORARY ROAD CLOSURES       |
| 1101.04  | TEMPORARY SHOULDER CLOSURES   |
| 1101.11  | TRAFFIC CONTROL DESIGN TABLES |
| 1110.01  | STATIONARY WORK ZONE SIGNS    |
| 1130.01  | DRUMS                         |
| 1135.01  | CONES                         |
| 1145.01  | BARRICADES                    |
| 1150.01  | FLAGGERS                      |
| 1180.01  | SKINNY DRUMS                  |

GENERAL NOTES:

1. INSTALLATION OF TEMPORARY ROUTE MARKERS, DESTINATION SIGNS, AND ANY NECESSARY MODIFICATIONS TO EXISTING OR PROPOSED REGULATORY OR WARNING SIGNS WILL BE MADE BY OTHERS (STATE OR TOWN FORCES) UNLESS OTHERWISE DESIGNATED IN PLANS. PROVIDE A MINIMUM 21 CALENDAR DAY NOTICE TO STATE FORCES BEFORE A ROADWAY IS CLOSED TO TRAFFIC SUCH THAT THE NECESSARY PROVISIONS CAN BE MADE TO INFORM LOCAL EMERGENCY AND LAW ENFORCEMENT PERSONNEL, SCHOOLS OR ANY OTHER PARTIES AFFECTED BY THE ROAD CLOSURE.
2. INSTALL SIGNS BEFORE THE BARRICADES WHEN CLOSING THE ROADWAY TO TRAFFIC. REMOVE BARRICADES BEFORE SIGNS WHEN OPENING THE ROADWAY TO TRAFFIC. INSTALL/REMOVE SIGNS AND BARRICADES WITHIN THE SAME CALENDAR DAY.
3. POSITION WING BARRICADES ON THE SHOULDERS AND SLOPE THE STRIPES DOWNWARD IN THE DIRECTION TOWARD WHICH TRAFFIC MUST TURN ON DETOURING.
4. USE ADDITIONAL TYPE III BARRICADES IN STAGGERED LOCATIONS SUPPLEMENTED WITH SIGN R11-4 "ROAD CLOSED TO THRU TRAFFIC" IN THE EVENT THAT TRAFFIC MUST BE MAINTAINED BEYOND THE DETOUR POINT.
5. SEE ROADWAY STANDARD DRAWING 1101.03, SHEET 1 OF 9, FOR TEMPORARY ROAD CLOSURE.
6. PROPOSED WORK NOT RELATED TO CULVERT CONSTRUCTION TO BE PERFORMED USING LANE OR SHOULDER CLOSURES, IF WARRANTED, PER APPLICABLE STANDARDS.



POSITION TYPE III BARRICADES AS DIRECTED BY THE ENGINEER.

POSITION TYPE III BARRICADES AS DIRECTED BY THE ENGINEER.

INSTALL AT HOG NECK RD (SOUTH) @ WOODVILLE RD

INSTALL AT PATRICK RD @ WOODVILLE RD

INSTALL AT HOG NECK RD (NORTH) @ WOODVILLE RD

INSTALL AT RED BANKS RD (NORTH) @ WOODVILLE RD

SEE MATCH LINE THIS SHEET

SEE MATCH LINE SEE SHEET TMP-5

**LEGEND**

➡ DIRECTION OF TRAFFIC FLOW

▬ BARRICADE (TYPE III)

⊥ STATIONARY SIGN

\* SIGNS/DEVICES INSTALLED IN PHASE 1 TO REMAIN AND/OR BE RELOCATED FOR PHASE 2. R11-3 SIGNS ON BARRICADES TO CHANGE ON PHASE 2.

APPROVED: *Mark McAdams*

DATE: 2/13/2020

DocuSigned by:  
D14606C110E5428...

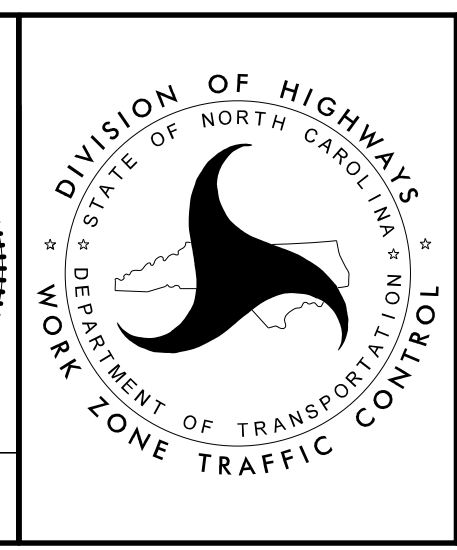
SEAL

048167

ENGINEER

MARK D. MCADAMS

**DOCUMENT NOT CONSIDERED FINAL UNLESS ALL SIGNATURES COMPLETED**

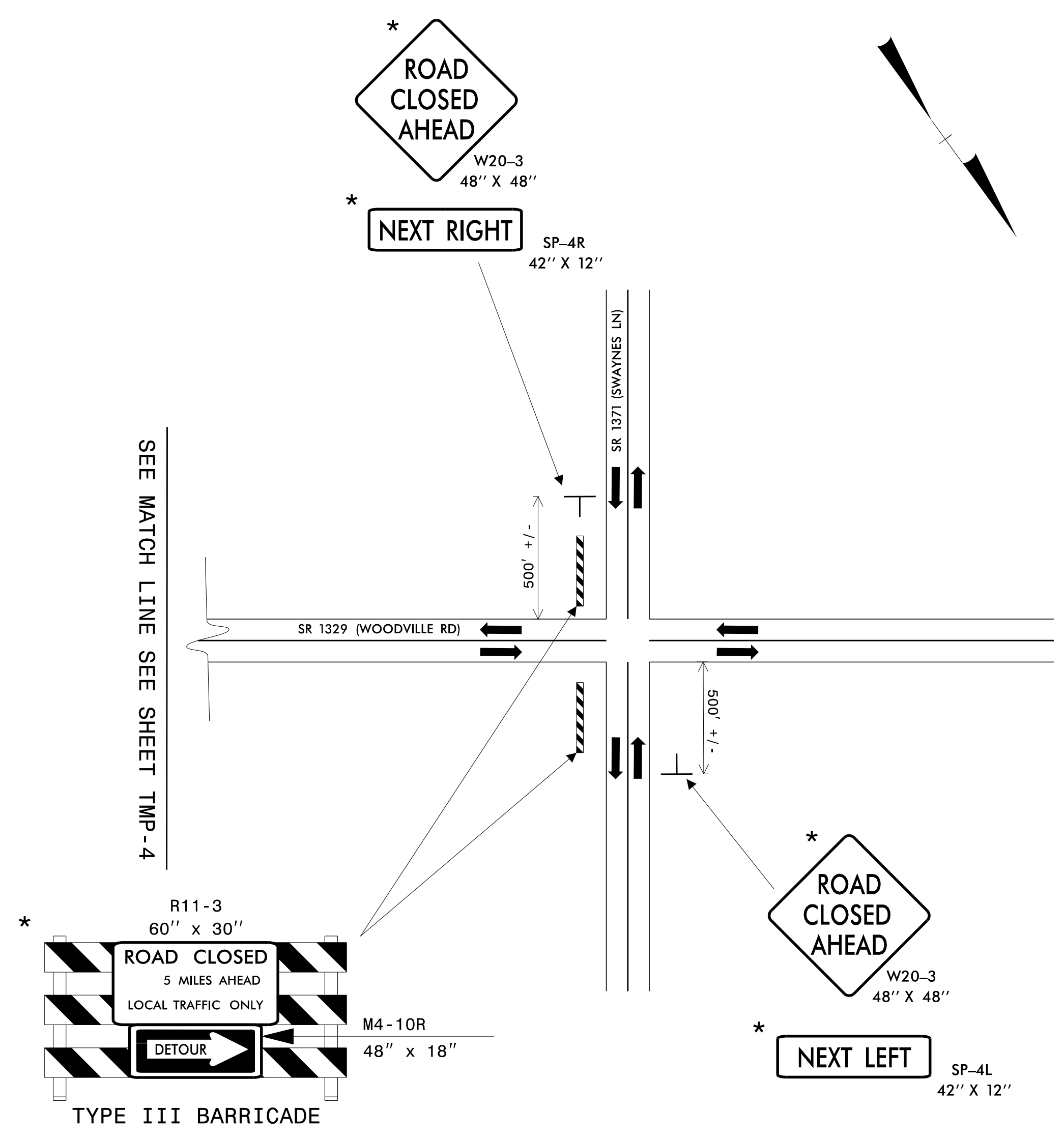


**PHASE 2 ROAD CLOSURE**  
SR 1329 (WOODVILLE ROAD)

CULVERT STA 132+65.83 TO STA 133+11.41

DIVISION OF HIGHWAYS  
STATE OF NORTH CAROLINA  
DEPARTMENT OF TRANSPORTATION  
WORK ZONE TRAFFIC CONTROL

2/13/2020 6:\Transportation\Roadway\NCDOT\Division01\NR-5740\Traffic\NR5740 TMP.dgn User:ACEV7019



ROADWAY STANDARD DRAWINGS:

THE FOLLOWING ROADWAY STANDARDS AS SHOWN IN "ROADWAY STANDARD DRAWINGS" - N.C. DEPARTMENT OF TRANSPORTATION - RALEIGH, N.C., DATED JANUARY 2018 ARE APPLICABLE TO THIS PROJECT AND BY REFERENCE HEREBY ARE CONSIDERED A PART OF THESE PLANS:

| STD. NO. | TITLE                         |
|----------|-------------------------------|
| 1101.01  | WORK ZONE WARNING SIGNS       |
| 1101.02  | TEMPORARY LANE CLOSURES       |
| 1101.03  | TEMPORARY ROAD CLOSURES       |
| 1101.04  | TEMPORARY SHOULDER CLOSURES   |
| 1101.11  | TRAFFIC CONTROL DESIGN TABLES |
| 1110.01  | STATIONARY WORK ZONE SIGNS    |
| 1130.01  | DRUMS                         |
| 1135.01  | CONES                         |
| 1145.01  | BARRICADES                    |
| 1150.01  | FLAGGERS                      |
| 1180.01  | SKINNY DRUMS                  |

GENERAL NOTES:

1. INSTALLATION OF TEMPORARY ROUTE MARKERS, DESTINATION SIGNS, AND ANY NECESSARY MODIFICATIONS TO EXISTING OR PROPOSED REGULATORY OR WARNING SIGNS WILL BE MADE BY OTHERS (STATE OR TOWN FORCES) UNLESS OTHERWISE DESIGNATED IN PLANS. PROVIDE A MINIMUM 21 CALENDAR DAY NOTICE TO STATE FORCES BEFORE A ROADWAY IS CLOSED TO TRAFFIC SUCH THAT THE NECESSARY PROVISIONS CAN BE MADE TO INFORM LOCAL EMERGENCY AND LAW ENFORCEMENT PERSONNEL, SCHOOLS OR ANY OTHER PARTIES AFFECTED BY THE ROAD CLOSURE.
2. INSTALL SIGNS BEFORE THE BARRICADES WHEN CLOSING THE ROADWAY TO TRAFFIC. REMOVE BARRICADES BEFORE SIGNS WHEN OPENING THE ROADWAY TO TRAFFIC. INSTALL/REMOVE SIGNS AND BARRICADES WITHIN THE SAME CALENDAR DAY.
3. POSITION WING BARRICADES ON THE SHOULDERS AND SLOPE THE STRIPES DOWNWARD IN THE DIRECTION TOWARD WHICH TRAFFIC MUST TURN ON DETOURING.
4. USE ADDITIONAL TYPE III BARRICADES IN STAGGERED LOCATIONS SUPPLEMENTED WITH SIGN R11-4 "ROAD CLOSED TO THRU TRAFFIC" IN THE EVENT THAT TRAFFIC MUST BE MAINTAINED BEYOND THE DETOUR POINT.
5. SEE ROADWAY STANDARD DRAWING 1101.03, SHEET 1 OF 9, FOR TEMPORARY ROAD CLOSURE.
6. PROPOSED WORK NOT RELATED TO CULVERT CONSTRUCTION TO BE PERFORMED USING LANE OR SHOULDER CLOSURES, IF WARRANTED, PER APPLICABLE STANDARDS.

**LEGEND**

- DIRECTION OF TRAFFIC FLOW
- BARRICADE (TYPE III)
- STATIONARY SIGN

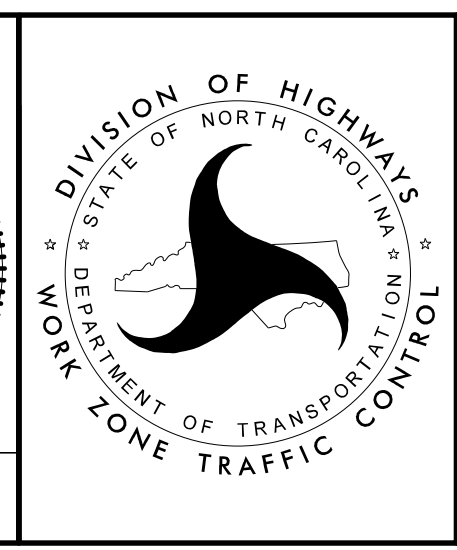
\* SIGNS/DEVICES INSTALLED IN PHASE 1 TO REMAIN AND/OR BE RELOCATED FOR PHASE 2. R11-3 SIGNS ON BARRICADES TO CHANGE ON PHASE 2.

APPROVED: *Mark McAdams*  
D14806C110E5428

DATE: 2/13/2020

**SEAL**  
 NORTH CAROLINA PROFESSIONAL ENGINEER  
 MARK D. MCADAMS  
 048167

**DOCUMENT NOT CONSIDERED FINAL UNLESS ALL SIGNATURES COMPLETED**



**PHASE 2 ROAD CLOSURE**  
 SR 1329 (WOODVILLE ROAD)

CULVERT STA 132+65.83  
 TO STA 133+11.41

2/13/2020  
 G:\Transportation\Roadway\NCDOT\Division\NR-5740\Traffic\RS5740 TMP.dgn  
 User:ACEV7019