

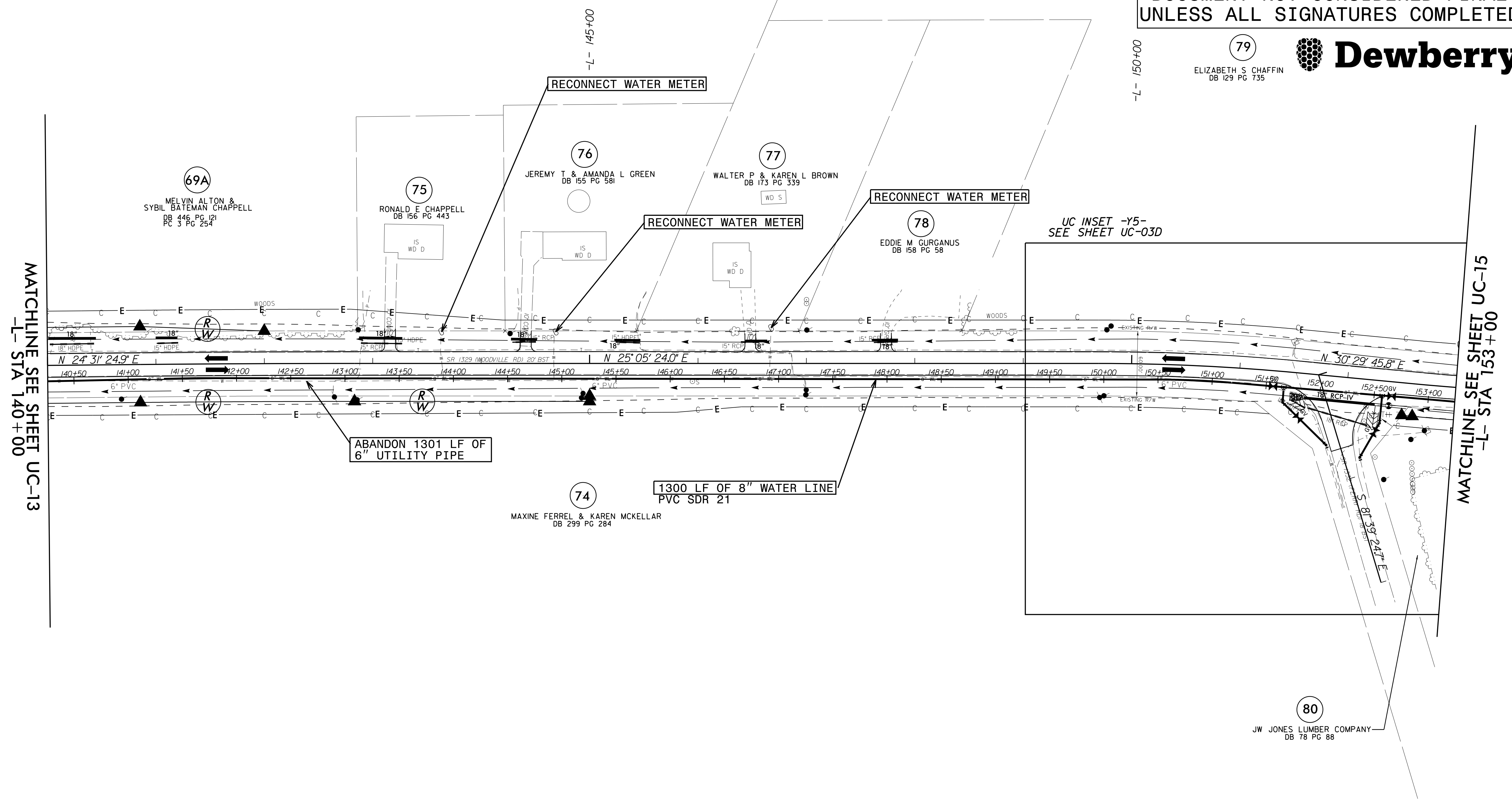
5/14/19

PROJECT REFERENCE NO.	SHEET NO.
R-5740	UC-14
DESIGNED BY:	
DRAWN BY:	
CHECKED BY:	
APPROVED BY:	
REVISIED:	Date: 12/6/19
NORTH CAROLINA DEPARTMENT OF TRANSPORTATION UTILITIES ENGINEERING SEC. PHONE: (919) 707-6690 FAX: (919) 1250-4151	
UTILITY CONSTRUCTION PLANS ONLY	

UTILITY CONSTRUCTION

**DOCUMENT NOT CONSIDERED FINAL
UNLESS ALL SIGNATURES COMPLETED**

79
ELIZABETH S. CHAFFIN
DB 129 PG 735



MATCHLINE SEE SHEET UC-13
-L- STA 140+00

MATCHLINE SEE SHEET UC-15
-L- STA 153+00

NOTE:
 THE ESTIMATED QUANTITY OF DUCTILE IRON WATER PIPE FITTINGS ON THIS PLAN SHEET IS 670 POUNDS. THE ACTUAL QUANTITY AND TYPE OF FITTINGS WILL VARY BASED ON FIELD CONDITIONS.

NOTE: SEE SHEETS UC-26 & UC-27 FOR -L- PROFILE

04-DEC-2019 18:11
R:\Utilities\Projects\AR5740_uc_PSH_14.dgn
ASB/STW/MLP/SSS