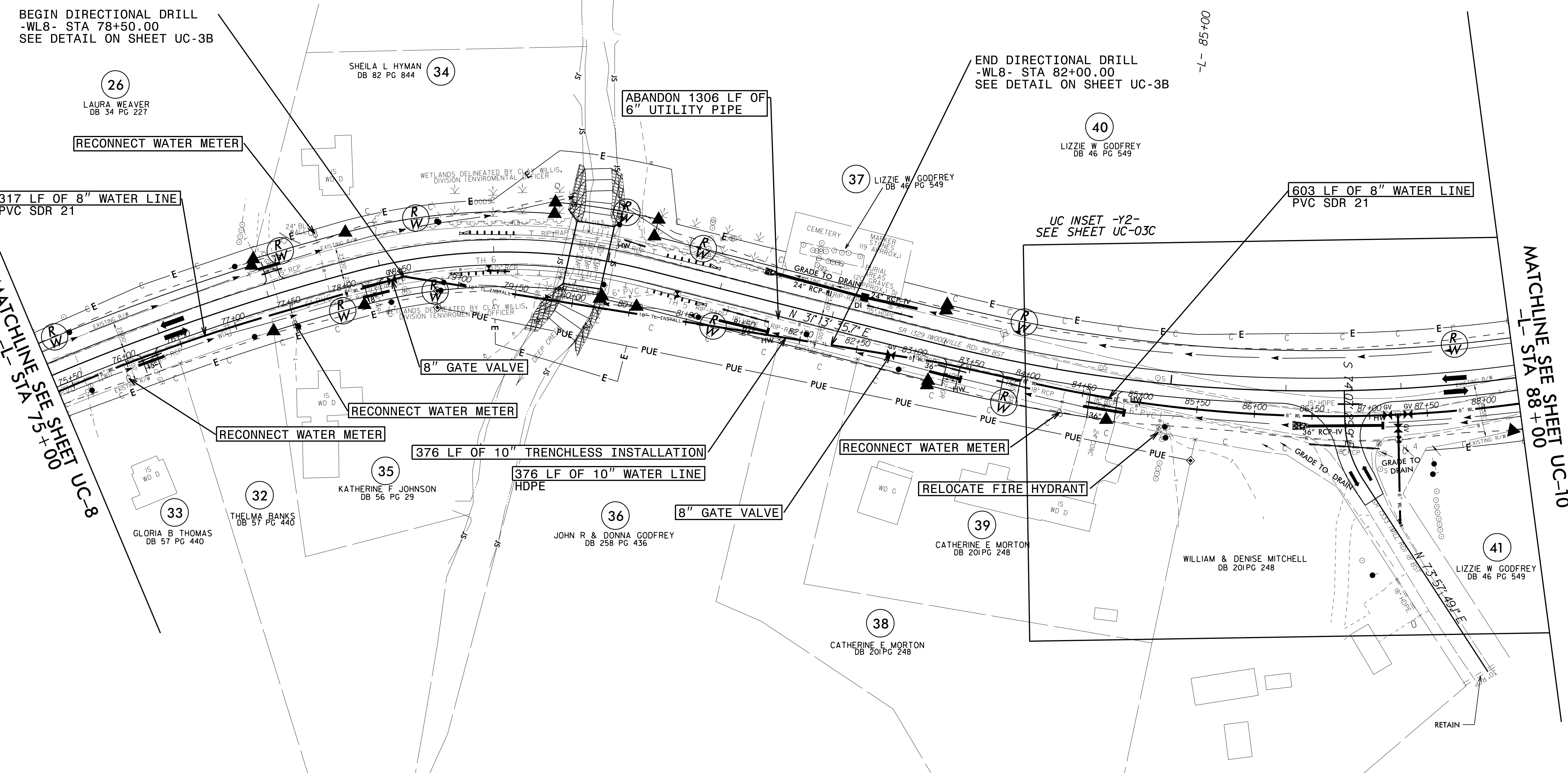


PROJECT REFERENCE NO.	R-5740	SHEET NO.	UC-9
DESIGNED BY:			
DRAWN BY:			
CHECKED BY:			
APPROVED BY:			
REVISED:			
NORTH CAROLINA DEPARTMENT OF TRANSPORTATION			
UTILITIES ENGINEERING SEC.			UTILITY CONSTRUCTION PLANS ONLY
PHONE: (919) 707-6690			
FAX: (919) 250-4131			

NOTE:
 PRIOR TO COMMENCING ANY WORK ON ANY TRENCHLESS INSTALLATION ON THIS PROJECT, PROVIDE A DESIGN FOR THE TRENCHLESS INSTALLATION CERTIFIED BY AN ENGINEER LICENSED BY THE STATE OF NORTH CAROLINA, AS REQUIRED BY SUBARTICLE 1550-3(B) OF THE STANDARD SPECIFICATIONS.

UTILITY CONSTRUCTION

DOCUMENT NOT CONSIDERED FINAL UNLESS ALL SIGNATURES COMPLETED



BEGIN DIRECTIONAL DRILL
 -WL8- STA 78+50.00
 SEE DETAIL ON SHEET UC-3B

END DIRECTIONAL DRILL
 -WL8- STA 82+00.00
 SEE DETAIL ON SHEET UC-3B

RECONNECT WATER METER

317 LF OF 8" WATER LINE
 PVC SDR 21

ABANDON 1306 LF OF
 6" UTILITY PIPE

603 LF OF 8" WATER LINE
 PVC SDR 21

UC INSET -Y2-
 SEE SHEET UC-03C

8" GATE VALVE

RECONNECT WATER METER

376 LF OF 10" TRENCHLESS INSTALLATION
 HDPE

376 LF OF 10" WATER LINE
 HDPE

RECONNECT WATER METER

RELOCATE FIRE HYDRANT

8" GATE VALVE

MATCHLINE SEE SHEET UC-8
 STA 75+00.00

MATCHLINE SEE SHEET UC-10
 STA 88+00.00

NOTE:
 THE ESTIMATED QUANTITY OF DUCTILE IRON WATER PIPE FITTINGS ON THIS PLAN SHEET IS 520 POUNDS. THE ACTUAL QUANTITY AND TYPE OF FITTINGS WILL VARY BASED ON FIELD CONDITIONS.

- NOTE:**
- 1) GODFREY CEMETERY SIGN AND GRAVES NOT TO BE DISTURBED
 - 2) NO HEAVY EQUIPMENT BEYOND PROPOSED RW ON PARCEL 37
 - 3) SEE SHEET UC-24 FOR -WL- PROFILE