

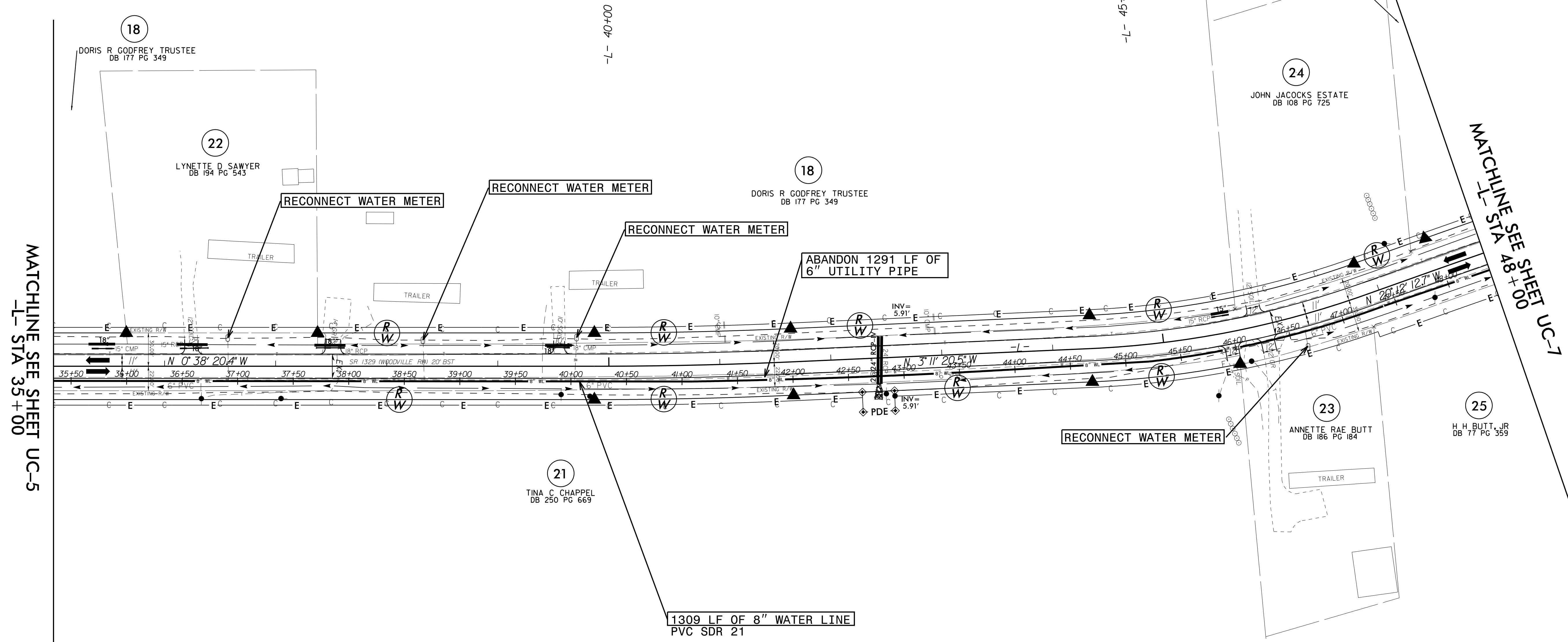
5/14/19

PROJECT REFERENCE NO.	SHEET NO.
R-5740	UC-6
DESIGNED BY:	
DRAWN BY:	
CHECKED BY:	
APPROVED BY:	
REVISED:	
NORTH CAROLINA DEPARTMENT OF TRANSPORTATION UTILITIES ENGINEERING SECTION PHONE: (919) 707-6690 FAX: (919) 250-4151	
UTILITY CONSTRUCTION PLANS ONLY Date: 12/6/19	

UTILITY CONSTRUCTION

**DOCUMENT NOT CONSIDERED FINAL
UNLESS ALL SIGNATURES COMPLETED**

26 LAURA WEAVER DB 34 PG 227



MATCHLINE SEE SHEET UC-5
-L- STA 35+00

MATCHLINE SEE SHEET UC-7
-L- STA 48+00

NOTE:
 THE ESTIMATED QUANTITY OF DUCTILE IRON WATER PIPE FITTINGS ON THIS PLAN SHEET IS 0 POUNDS. THE ACTUAL QUANTITY AND TYPE OF FITTINGS WILL VARY BASED ON FIELD CONDITIONS.

NOTE: SEE SHEETS UC-22 & UC-23 FOR -WL- PROFILE

04-DEC-2019 18:11 R:\Utilities\Projects\AR5740.uc_PSH_06.dgn