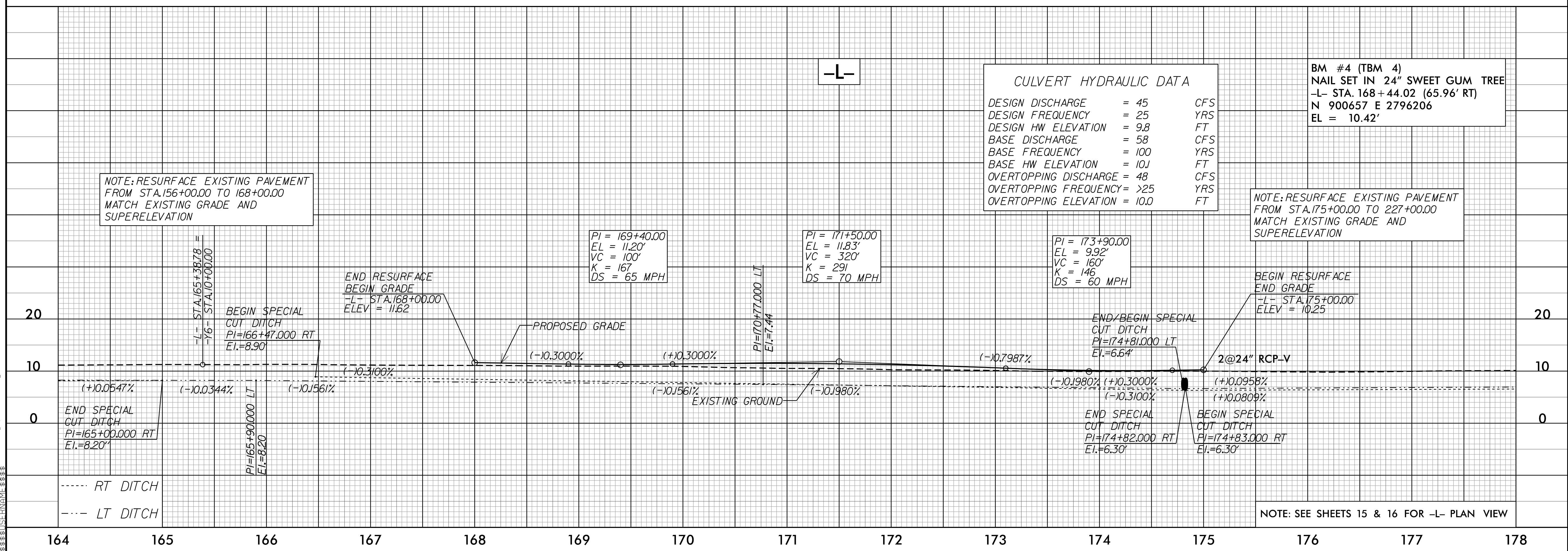
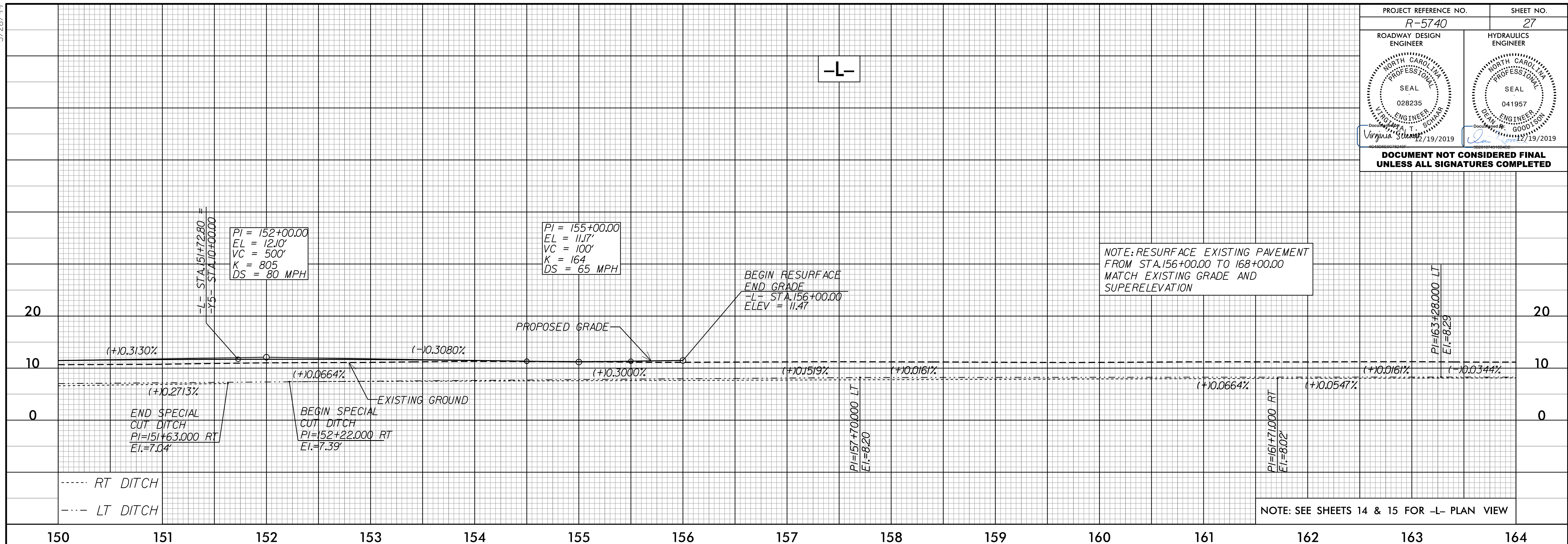


5/26/99

PROJECT REFERENCE NO. R-5740	SHEET NO. 27
ROADWAY DESIGN ENGINEER 	HYDRAULICS ENGINEER
DOCUMENT NOT CONSIDERED FINAL UNLESS ALL SIGNATURES COMPLETED	



BM #4 (TBM 4)
 NAIL SET IN 24" SWEET GUM TREE
 -L- STA. 168 + 44.02 (65.96' RT)
 N 900657 E 2796206
 EL = 10.42'

17 DEC 2019 11:50 \\P5740-rdy-pf1_PSH.dgn
 \$\$\$\$361037814MPT\$\$\$\$