

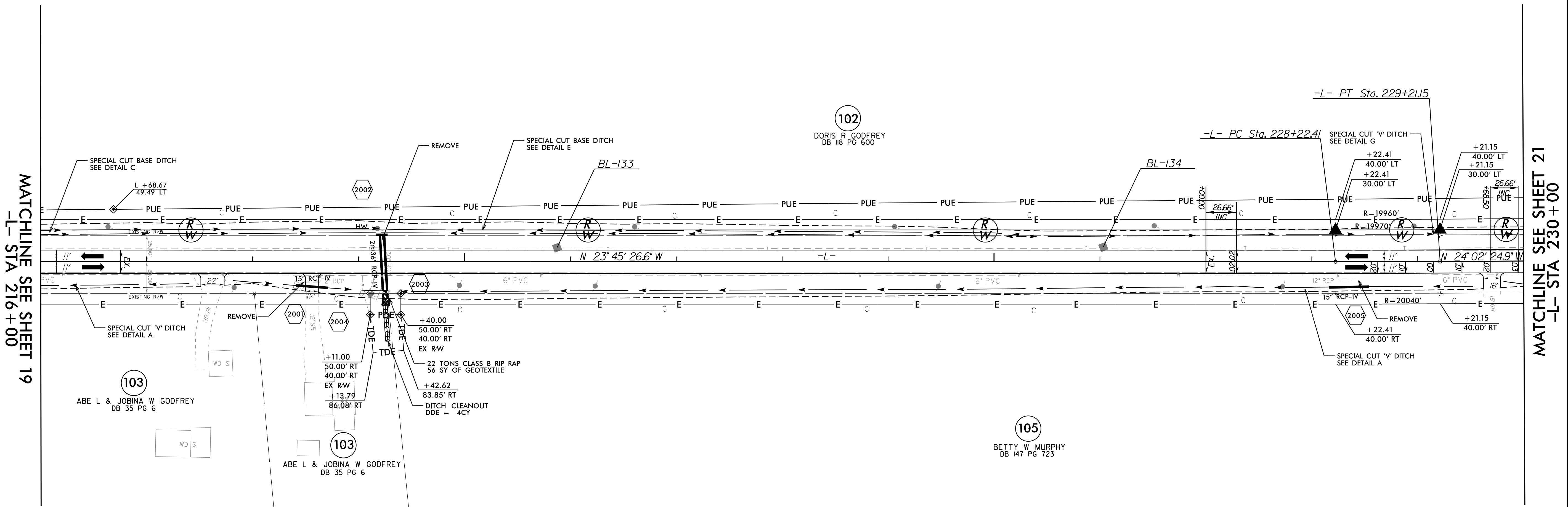
5/14/19

PROJECT REFERENCE NO. R-5740	SHEET NO. 20
RW SHEET NO.	
ROADWAY DESIGN ENGINEER 	HYDRAULICS ENGINEER
DOCUMENT NOT CONSIDERED FINAL UNLESS ALL SIGNATURES COMPLETED	

-L-

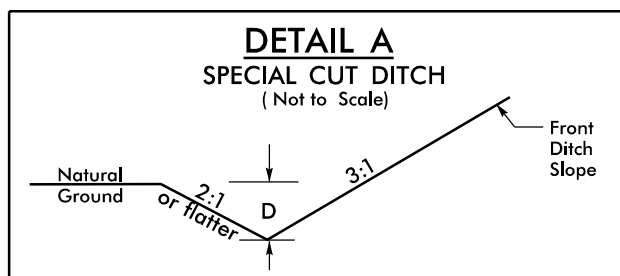
PI Sta 228+71.78
 $\Delta = 0^\circ 16' 58.3" (LT)$
 $D = 0' 17' 11.3"$
 $L = 98.74'$
 $T = 49.37'$
 $R = 20,000.00'$
 $SE = EXIST$

BM #5 (TBM 5)
 NAIL SET IN POLE
 -L- STA. 221+22.92 (22.73' RT)
 N 905539 E 2794203
 EL = 8.8757'

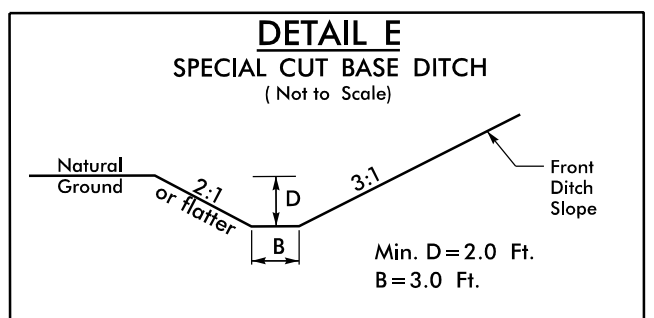


MATCHLINE SEE SHEET 19
-L- STA 216+00

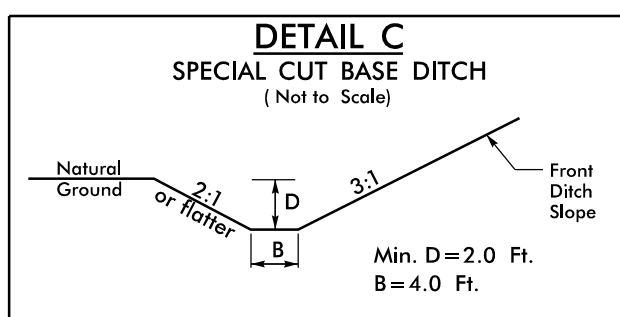
MATCHLINE SEE SHEET 21
-L- STA 230+00



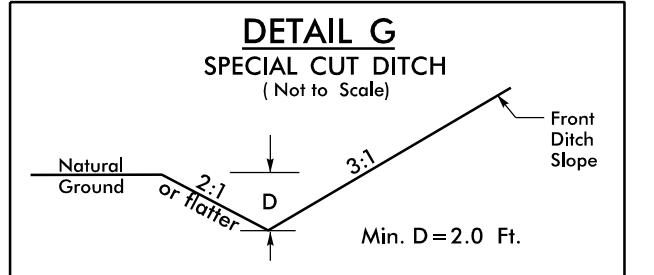
FROM -L- STA. 211+59 TO -L- STA. 217+40 RT Min. D=1.0 Ft.
 FROM -L- STA. 217+82 TO -L- STA. 219+22 RT Min. D=1.0 Ft.
 FROM -L- STA. 219+23 TO -L- STA. 229+52 RT Min. D=1.0 Ft.
 FROM -L- STA. 229+81 TO -L- STA. 231+43 RT Min. D=1.0 Ft.



FROM -L- STA. 219+39 TO -L- STA. 225+25 LT



FROM -L- STA. 212+37 TO -L- STA. 219+21 LT



FROM -L- STA. 225+25 TO -L- STA. 231+39 LT

NOTE: SEE SHEET 29 FOR -L- PROFILE

R:\DEC-2019\16534\RE740_rdy_PSH_20.dgn
 11/14/2019 10:53:53 AM