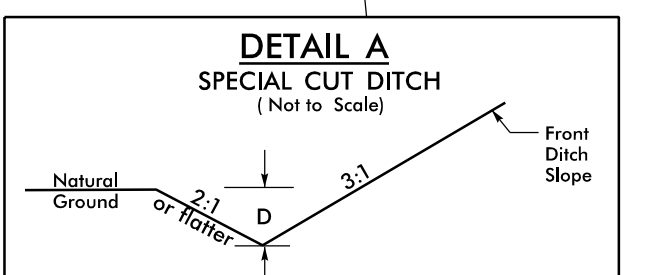
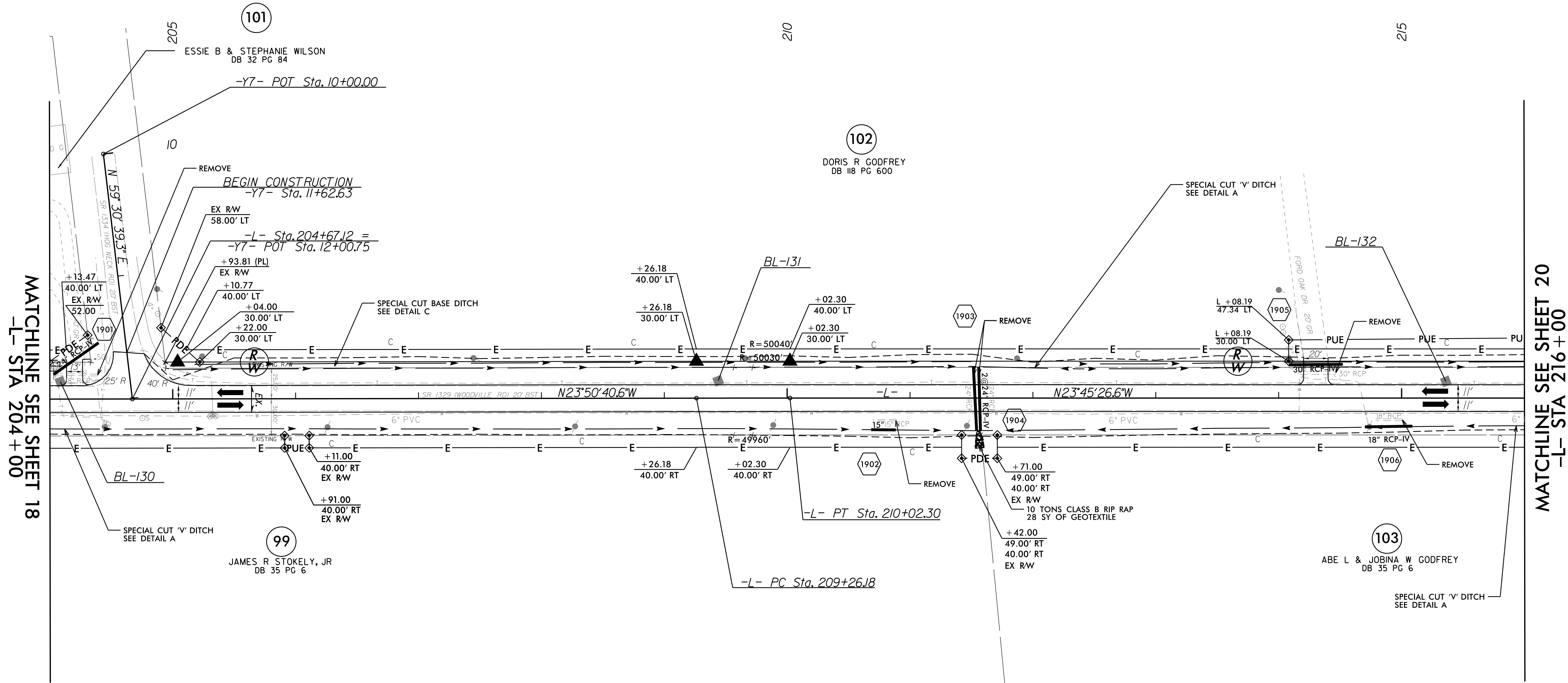


5/14/19

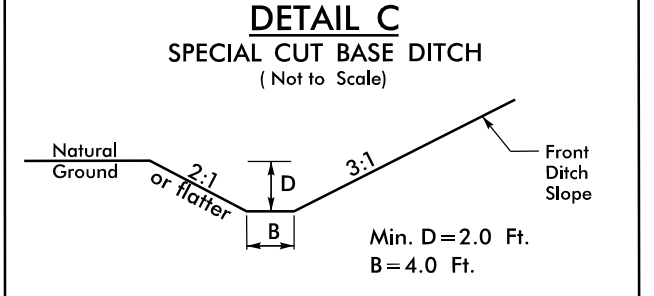
PROJECT REFERENCE NO. R-5740	SHEET NO. 19
RW SHEET NO.	
ROADWAY DESIGN ENGINEER	HYDRAULICS ENGINEER
DOCUMENT NOT CONSIDERED FINAL UNLESS ALL SIGNATURES COMPLETED	

-L-

PI Sta 209+64.24
 $\Delta = 0^{\circ}05'14.0''$ (RT)
 $D = 0^{\circ}06'52.5''$
 $L = 76.12'$
 $T = 38.06'$
 $R = 50,000.00'$
 $SE = EXIST$



FROM -L- STA. 199+17 TO -L- STA. 205+00 RT Min. D=1.0 Ft.
 FROM -L- STA. 205+00 TO -L- STA. 211+53 RT Min. D=1.5 Ft.
 FROM -L- STA. 211+58 TO -L- STA. 212+37 LT Min. D=1.5 Ft.
 FROM -L- STA. 211+59 TO -L- STA. 217+40 RT Min. D=1.0 Ft.



FROM -L- STA. 205+04 TO -L- STA. 211+51 LT
 FROM -L- STA. 212+37 TO -L- STA. 219+21 LT

NOTE: SEE SHEETS 28 & 29 FOR -L- PROFILE

R:\6-DEC-2019 16:31\195740_r.dwg_PSH_19.dgn
 5/14/19 10:53:33 AM