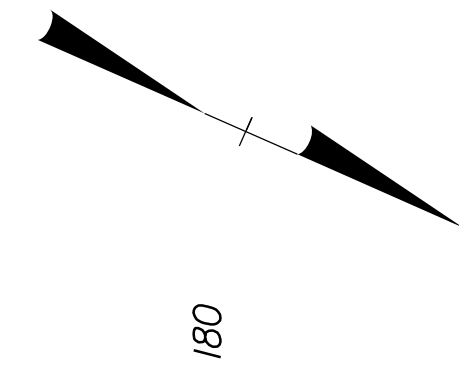


5/14/19

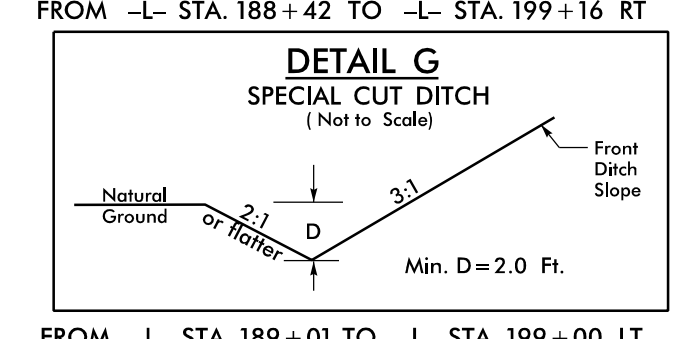
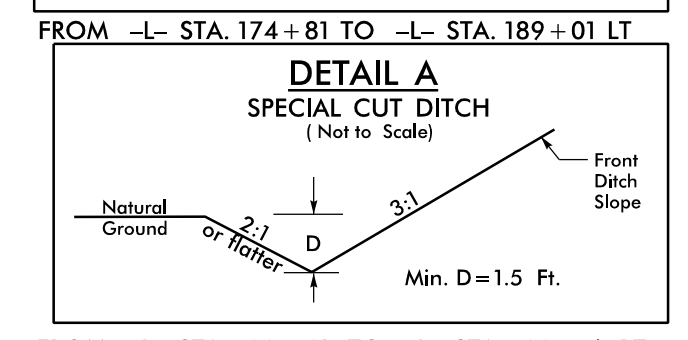
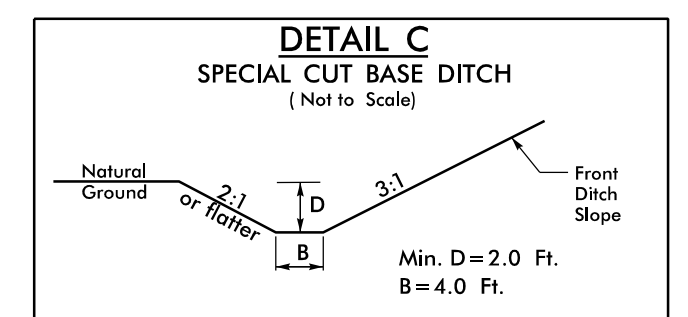
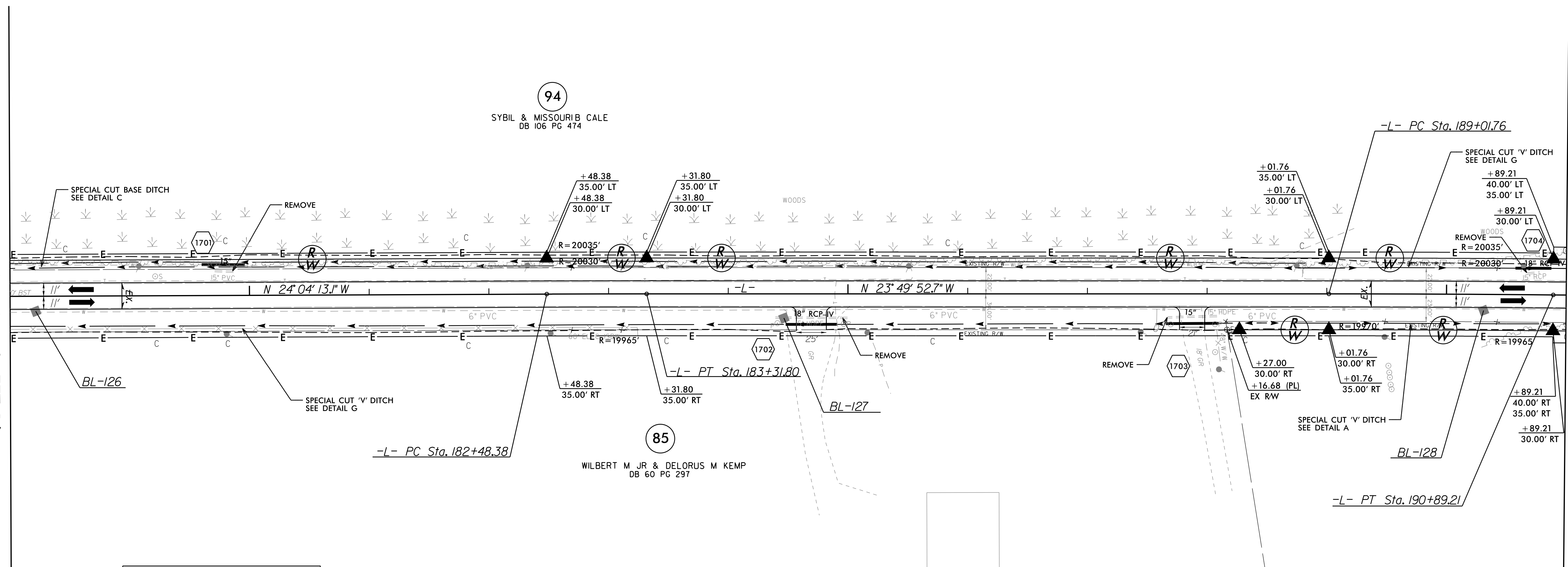
PROJECT REFERENCE NO. <b>R-5740</b>	SHEET NO. <b>17</b>
RW SHEET NO.	
ROADWAY DESIGN ENGINEER	HYDRAULICS ENGINEER
<b>DOCUMENT NOT CONSIDERED FINAL UNLESS ALL SIGNATURES COMPLETED</b>	

-L-	
PI Sta 182+90.09 $\Delta = 0^\circ 14' 20.4''$ (RT) D = 0' 17' 11.3" L = 83.42' T = 41.71' R = 20,000.00' SE = EXIST	PI Sta 189+95.48 $\Delta = 0^\circ 32' 13.2''$ (RT) D = 0' 17' 11.3" L = 187.45' T = 93.73' R = 20,000.00' SE = EXIST



MATCHLINE SEE SHEET 16  
-L- STA 178+00

MATCHLINE SEE SHEET 18  
-L- STA 191+00



FROM -L- STA. 174+81 TO -L- STA. 189+01 LT  
FROM -L- STA. 188+42 TO -L- STA. 199+16 RT  
FROM -L- STA. 189+01 TO -L- STA. 199+00 LT  
FROM -L- STA. 174+83 TO -L- STA. 188+42 RT

**95**  
CURTIS L. GODFREY  
DB 129 PG 735

NOTE: SEE SHEET 28 FOR -L- PROFILE

R:\6-DEC-2019 16:25 R5740-rd-j\_PSH-17.dgn  
### SUTHERLAND ###