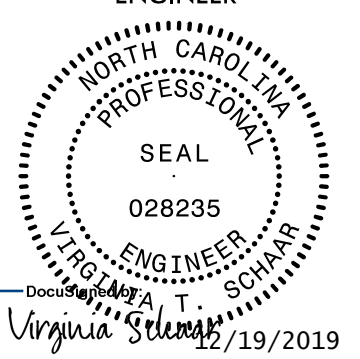
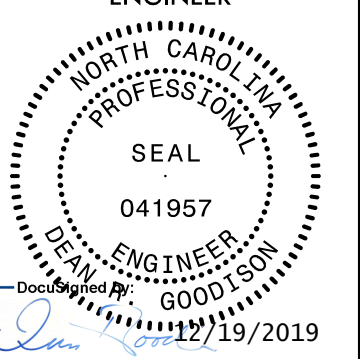
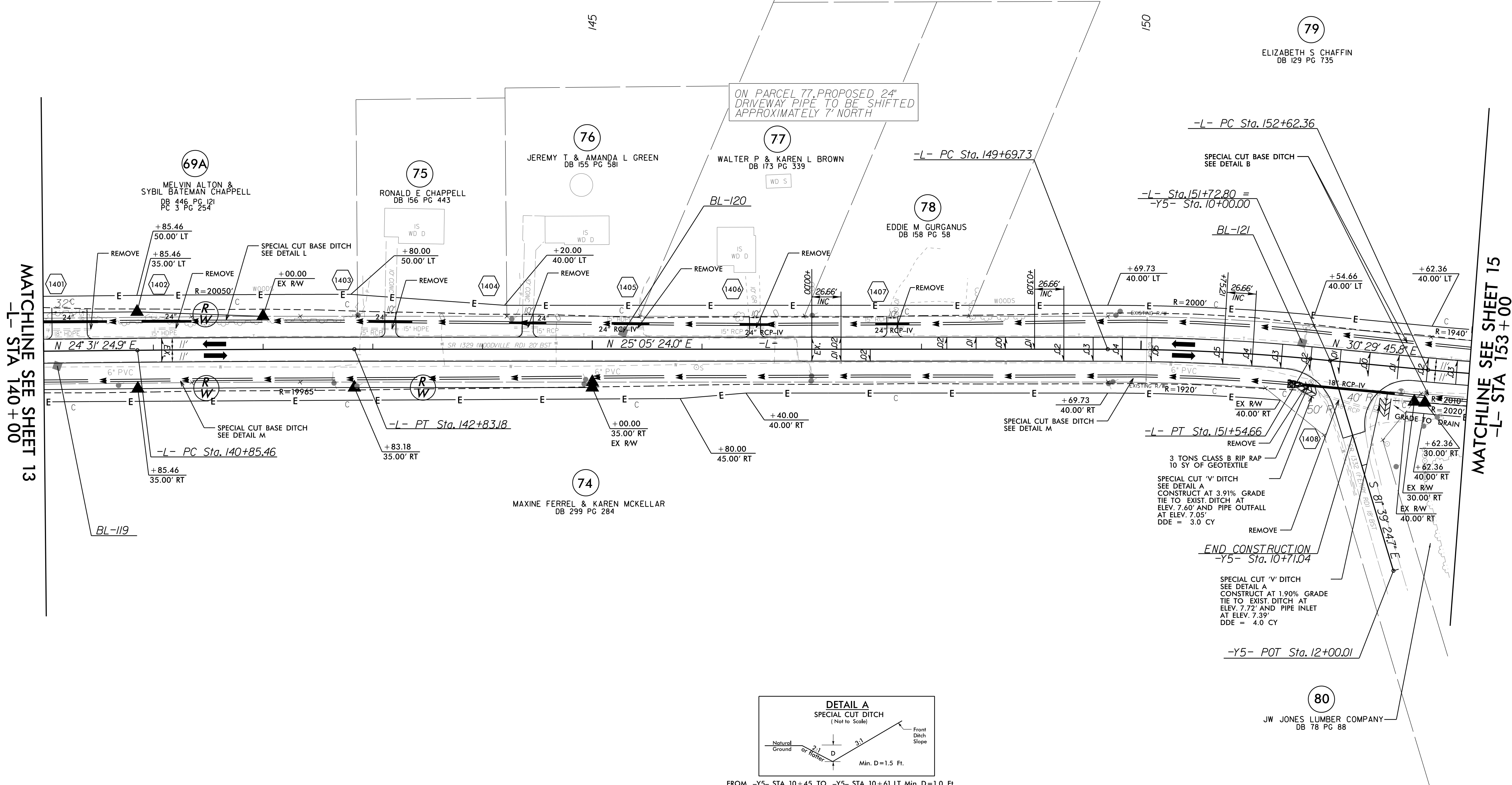
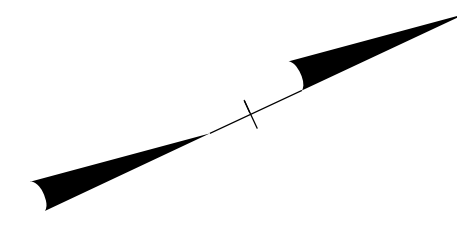


5/14/19

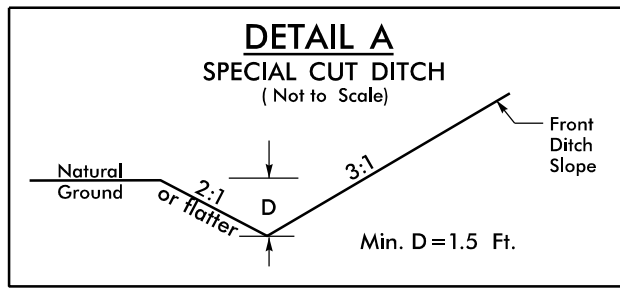
PROJECT REFERENCE NO. R-5740		SHEET NO. 14	
RW SHEET NO.			
ROADWAY DESIGN ENGINEER		HYDRAULICS ENGINEER	
			
DOCUMENT NOT CONSIDERED FINAL UNLESS ALL SIGNATURES COMPLETED			

-L-	
PI Sta 141+84.32	PI Sta 150+62.26
$\Delta = 0^\circ 33' 59.1''$ (RT)	$\Delta = 5^\circ 24' 21.8''$ (RT)
$D = 0' 17' 11.3''$	$D = 2' 55' 23.7''$
$L = 197.72'$	$L = 184.93'$
$T = 98.86'$	$T = 92.54'$
$R = 20,000.00'$	$R = 1,960.00'$
SE = EXIST	SE = 0.06

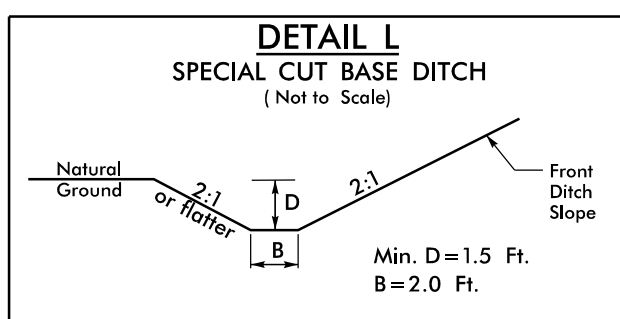


MATCHLINE SEE SHEET 13
-L- STA 140+00

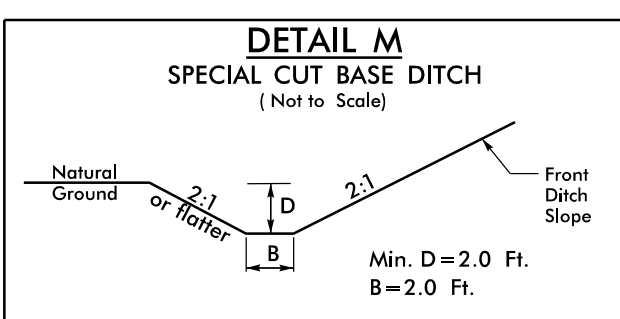
MATCHLINE SEE SHEET 15
-L- STA 153+00



FROM -Y5- STA. 10+45 TO -Y5- STA. 10+61 LT Min. D=1.0 Ft.
FROM -Y5- STA. 10+15 TO -Y5- STA. 10+25 RT Min. D=1.0 Ft.



FROM -L- STA. 133+96 TO -L- STA. 163+28 LT
FROM -L- STA. 152+22 TO -L- STA. 161+71 RT



FROM -L- STA. 136+00 TO -L- STA. 151+63 RT

NOTE: SEE SHEETS 26 & 27 FOR -L- PROFILE

R:\6-DEC-2019 16:15 R5740_r.dwg_PSH_14.dgn