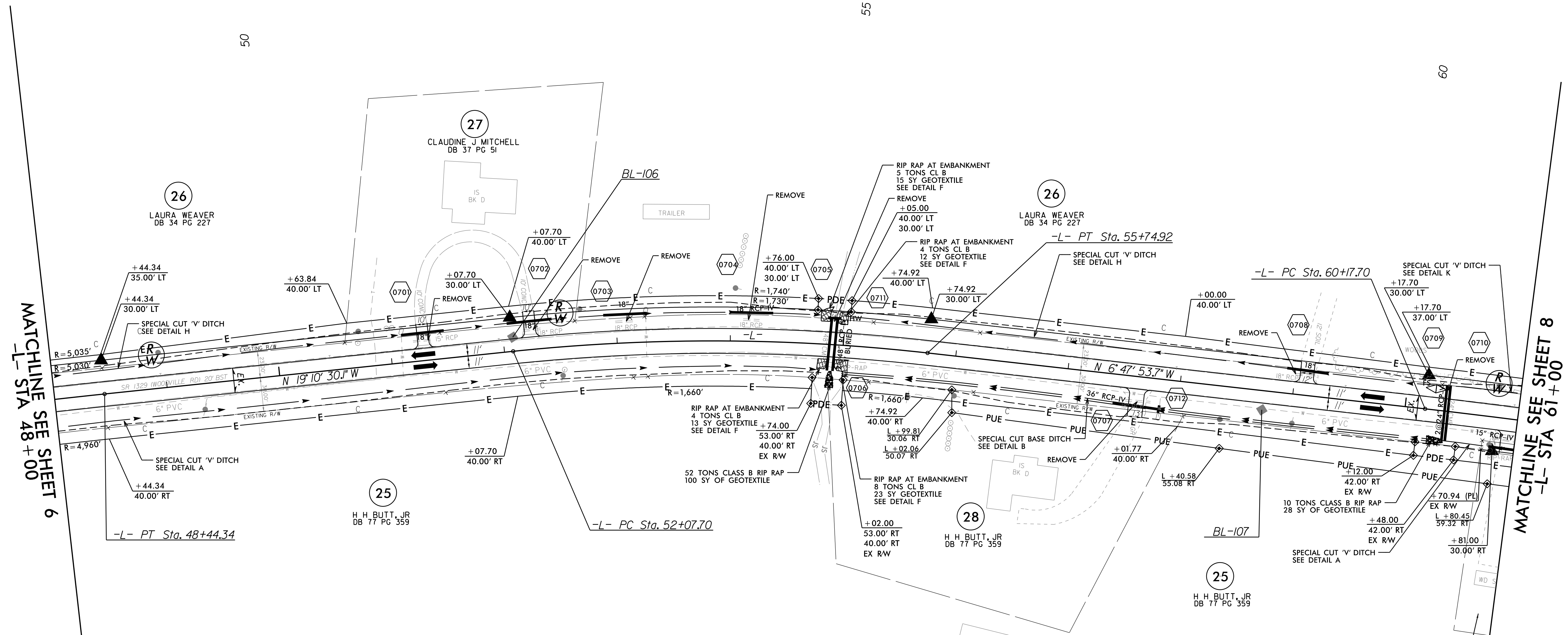


5/14/19

| | |
|--|-----------------------|
| PROJECT REFERENCE NO. R-5740 | SHEET NO. 7 |
| RW SHEET NO. | |
| ROADWAY DESIGN ENGINEER | HYDRAULICS ENGINEER |
| | |
| DOCUMENT NOT CONSIDERED FINAL UNLESS ALL SIGNATURES COMPLETED | |

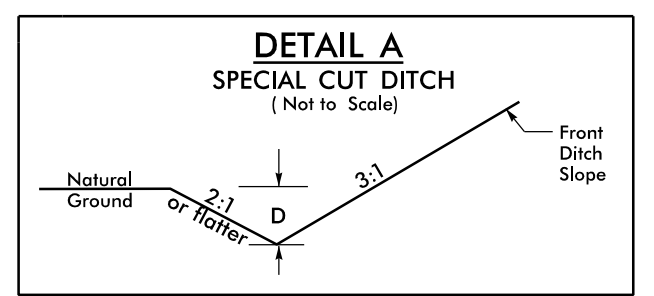
| -L- | |
|-------------------------------------|--------------------------------------|
| PI Sta 47+99.47 | PI Sta 53+92.03 |
| $\Delta = 1^{\circ} 01' 42.6"$ (RT) | $\Delta = 12^{\circ} 22' 36.5"$ (RT) |
| $D = 1^{\circ} 08' 45.3"$ | $D = 3^{\circ} 22' 13.2"$ |
| $L = 89.75'$ | $L = 367.23'$ |
| $T = 44.88'$ | $T = 184.33'$ |
| $R = 5,000.00'$ | $R = 1,700.00'$ |
| SE = EXIST | SE = EXIST |

BM #2 (TBM 2)
 NAIL SET IN 22" PINE TREE
 -L- STA. 60+97.81 (33.70' LT)
 N 891279 E 2792259
 EL = 8.58'

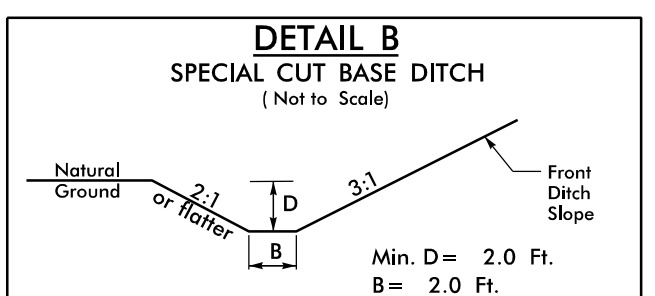


MATCHLINE SEE SHEET 6
-L- STA 48+00

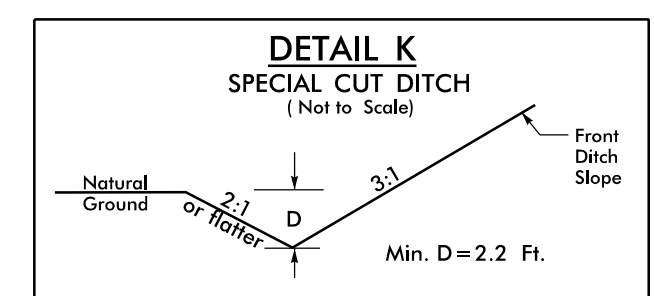
MATCHLINE SEE SHEET 8
-L- STA 61+00



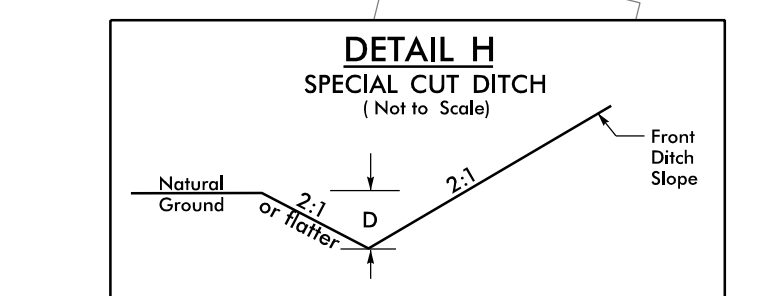
FROM -L- STA. 46+14 TO -L- STA. 54+81 RT Min. D=1.0 Ft.
 FROM -L- STA. 60+37 TO -L- STA. 74+20 RT Min. D=1.0 Ft.



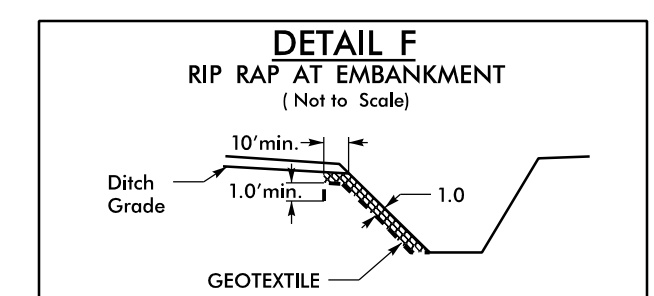
FROM -L- STA. 55+05 TO -L- STA. 60+36 RT



FROM -L- STA. 60+37 TO -L- STA. 72+50 LT



FROM -L- STA. 45+97 TO -L- STA. 54+84 LT Min. D=1.5 Ft.
 FROM -L- STA. 55+00 TO -L- STA. 60+36 LT Min. D=1.0 Ft.



FROM -L- STA. 54+84 TO STA. 54+90 LT
 FROM -L- STA. 54+94 TO STA. 55+00 LT
 FROM -L- STA. 54+81 TO STA. 54+85 RT
 FROM -L- STA. 54+93 TO STA. 55+05 RT

NOTE: SEE SHEET 23 FOR -L- PROFILE

16-DEC-2019 15:24 R5740_rdy_psh_07.dgn