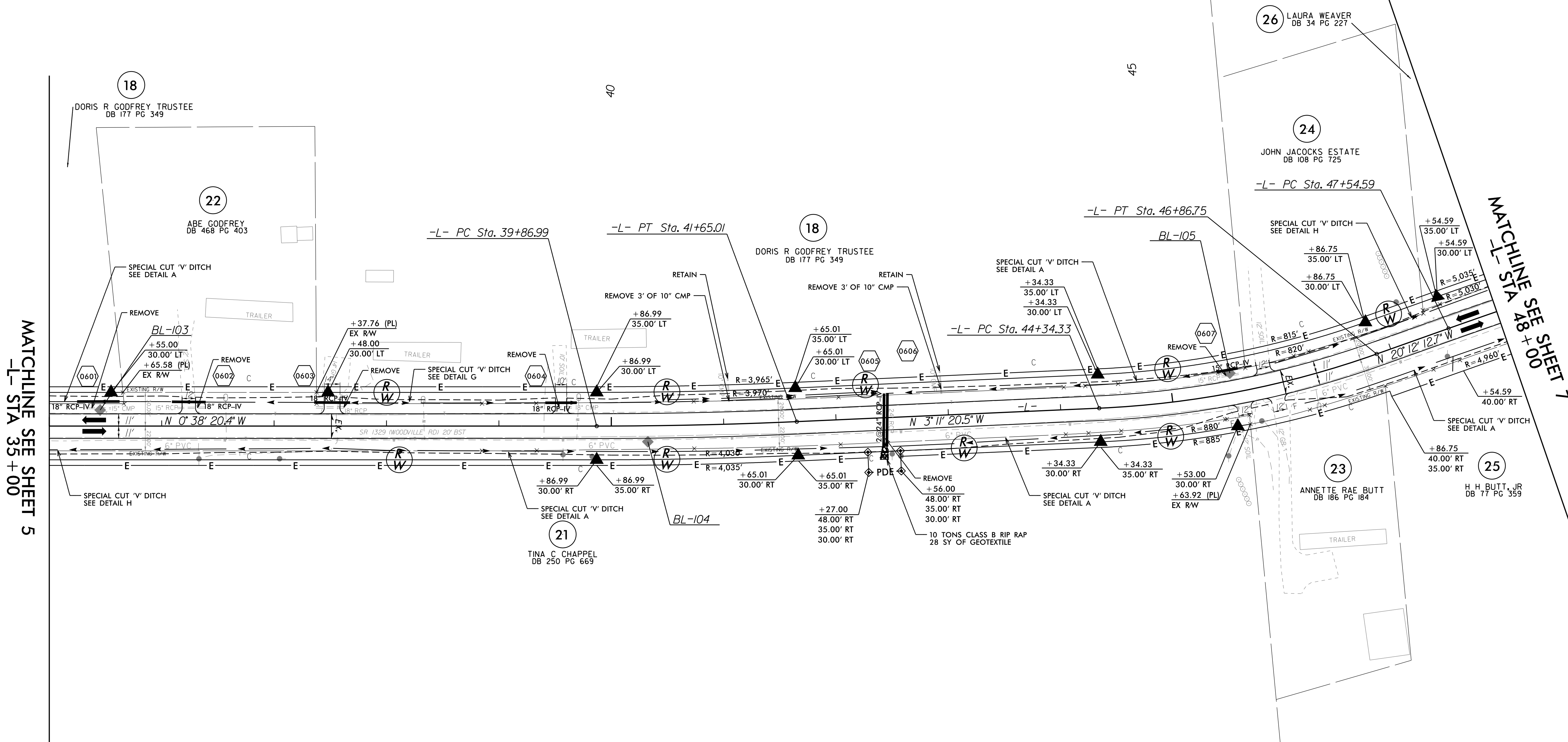


5/14/19

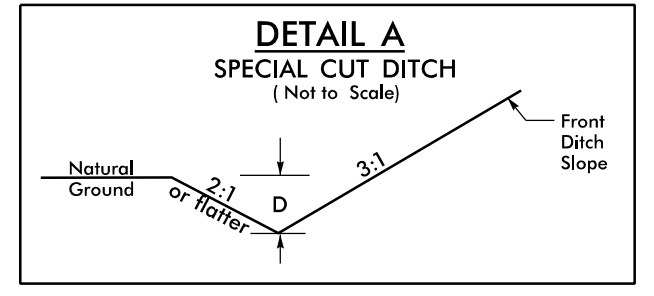
PROJECT REFERENCE NO. R-5740	SHEET NO. 6
RW SHEET NO.	
ROADWAY DESIGN ENGINEER	HYDRAULICS ENGINEER
DOCUMENT NOT CONSIDERED FINAL UNLESS ALL SIGNATURES COMPLETED	

-L-	
PI Sta 40+76.02 Δ = 2° 33' 00.2" (LT) D = 1' 25' 56.6" L = 178.03' T = 89.03' R = 4,000.00' SE = EXIST	PI Sta 45+61.48 Δ = 17° 00' 52.2" (LT) D = 6' 44' 26.4" L = 252.42' T = 127.14' R = 850.00' SE = EXIST

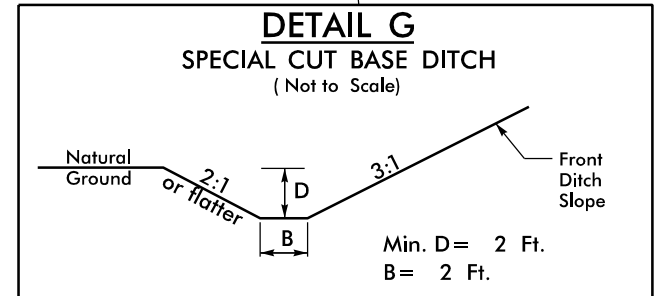


MATCHLINE SEE SHEET 5
-L- STA 35+00

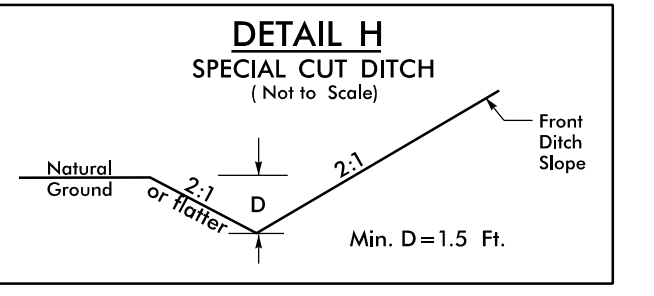
MATCHLINE SEE SHEET 7
-L- STA 48+00



FROM -L- STA. 28+56 TO -L- STA. 37+82 LT Min. D=1.5 Ft.
 FROM -L- STA. 37+82 TO -L- STA. 40+50 LT Min. D=1.0 Ft.
 FROM -L- STA. 42+44 TO -L- STA. 45+75 LT Min. D=1.0 Ft.
 FROM -L- STA. 37+80 TO -L- STA. 42+43 RT Min. D=1.0 Ft.
 FROM -L- STA. 42+44 TO -L- STA. 45+00 RT Min. D=1.0 Ft.
 FROM -L- STA. 46+14 TO -L- STA. 54+81 RT Min. D=1.0 Ft.



FROM -L- STA. 40+50 TO -L- STA. 42+43 LT
 Min. D = 2 Ft.
 B = 2 Ft.



FROM -L- STA. 45+97 TO -L- STA. 54+84 LT
 FROM -L- STA. 28+53 TO -L- STA. 37+80 RT
 Min. D=1.5 Ft.

NOTE: SEE SHEETS 22 & 23 FOR -L- PROFILE

R:\8-DEC-2019 10:00 RE5740_r.dwg_PSH_06.dgn
\$\$\$\$\$