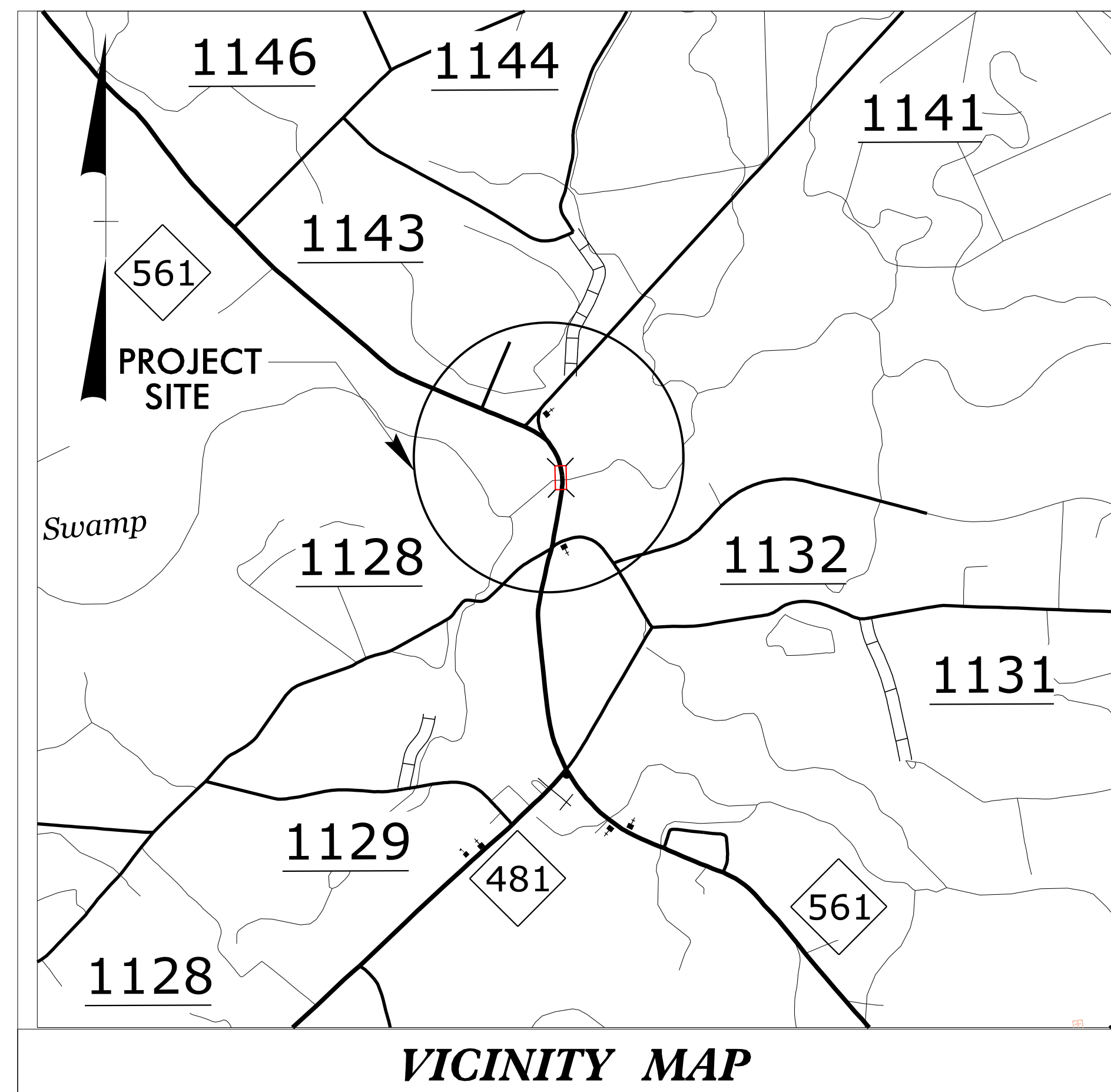
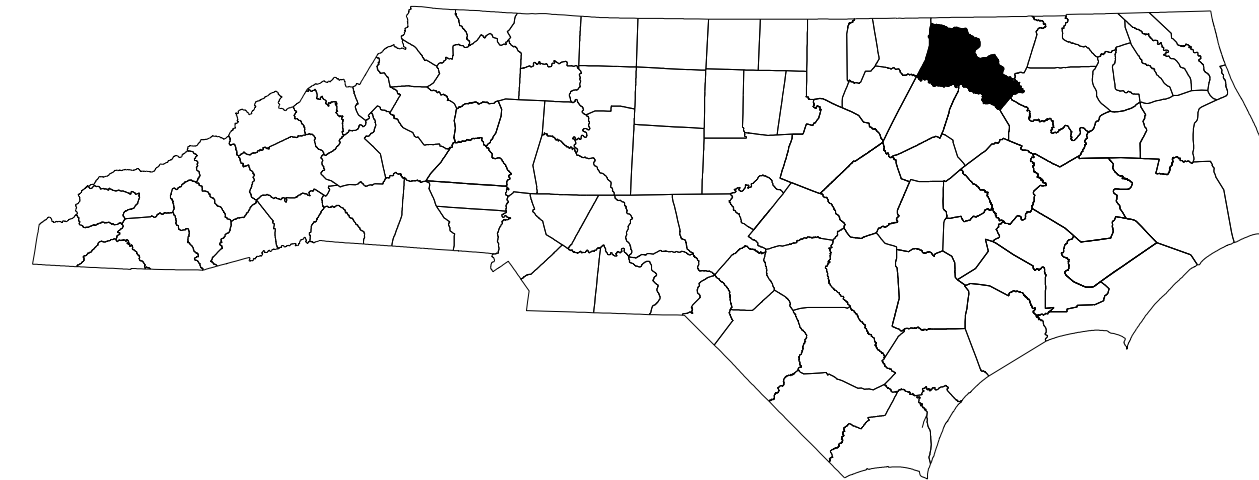


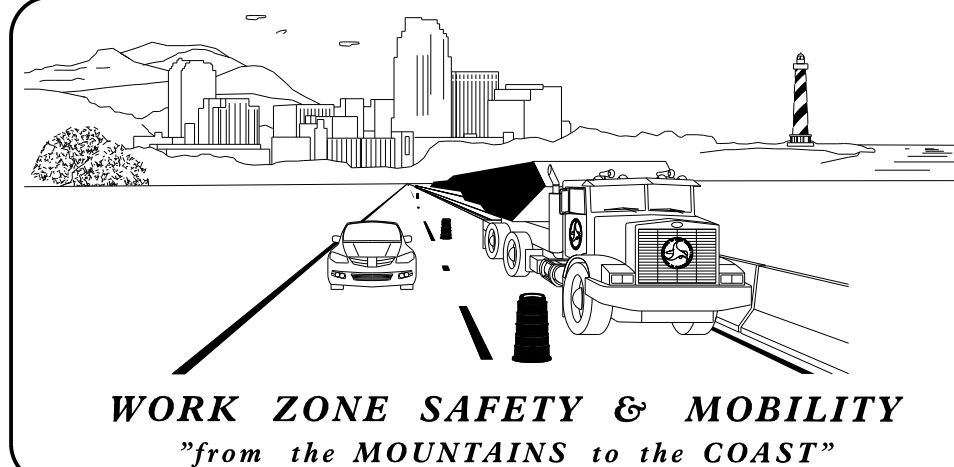
STATE OF NORTH CAROLINA
DIVISION OF HIGHWAYS

TRANSPORTATION MANAGEMENT PLAN

HALIFAX COUNTY

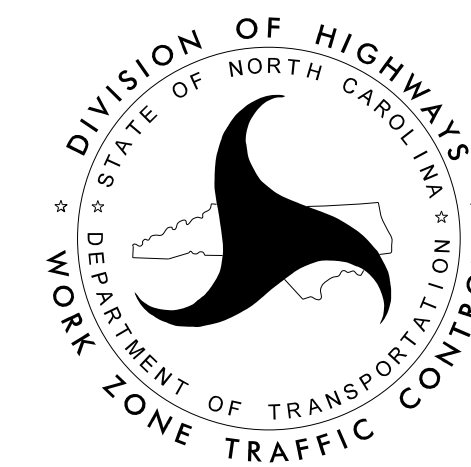


**LOCATION: BRIDGE NO. 93 OVER
CONOCONNARA SWAMP ON NC 561**



N.C.D.O.T. WORK ZONE TRAFFIC CONTROL
1561 MAIL SERVICE CENTER (MSC) RALEIGH, NC 27699-1561
750 N. GREENFIELD PARKWAY, GARNER, NC 27529 (DELIVERY)
PHONE: (919) 773-2800 FAX: (919) 771-2745

J.E. HUMMER, PHD, PE STATE TRAFFIC MANAGEMENT ENGINEER
STEVE KITE, PE TRAFFIC CONTROL PROJECT ENGINEER
SPENCER JENNINGS TRAFFIC CONTROL PROJECT DESIGN ENGINEER
WILLIAM DEBREW TRAFFIC CONTROL DESIGN ENGINEER



**DOCUMENT NOT CONSIDERED FINAL
UNLESS ALL SIGNATURES COMPLETED**

APPROVED: _____
DATE: 4/22/2020

SEAL

INDEX OF SHEETS

SHEET NO.	TITLE
TMP-1	TITLE SHEET, VICINITY MAP, AND INDEX OF SHEETS
TMP-1A	LIST OF APPLICABLE ROADWAY STANDARD DRAWINGS AND LEGEND
TMP-1B	TRANSPORTATION OPERATIONS PLAN: (MANAGEMENT STRATEGIES, GENERAL NOTES, LOCAL NOTES, AND TEMPORARY TRAFFIC CONTROL PHASING)
TMP-2	NO SHEET
TMP-3	PHASING
TMP-4	TEMPORARY TRAFFIC CONTROL PHASE 1 DETAIL
TMP-5	TEMPORARY TRAFFIC CONTROL PHASE 2 DETAIL

SHEET NO.
TMP-1

TIP PROJECT: B-5662

3/23/2020
M:\2018\25801945\21B-5662\Traffic\TrafficControl\TCP\B56662_TC_TMP_01.dgn
User: bryan.hough





ROADWAY STANDARD DRAWINGS

THE FOLLOWING ROADWAY STANDARDS AS SHOWN IN "ROADWAY STANDARD DRAWINGS" - N.C. DEPARTMENT OF TRANSPORTATION - RALEIGH, N.C., DATED JANUARY 2018 ARE APPLICABLE TO THIS PROJECT AND BY REFERENCE HEREBY ARE CONSIDERED A PART OF THESE PLANS:


STD. NO.	TITLE
1101.01	WORK ZONE ADVANCE WARNING SIGNS
1101.02	TEMPORARY LANE CLOSURES
1101.03	TEMPORARY ROAD CLOSURES
1101.04	TEMPORARY SHOULDER CLOSURES
1101.05	WORK ZONE VEHICLE ACCESSES
1101.11	TRAFFIC CONTROL DESIGN TABLES
1110.01	STATIONARY WORK ZONE SIGNS
1110.02	PORTABLE WORK ZONE SIGNS
1115.01	FLASHING ARROW BOARDS
1130.01	DRUM
1135.01	CONES
1145.01	BARRICADES
1150.01	FLAGGING DEVICES
1160.01	TEMPORARY CRASH CUSHION
1165.01	WORK VEHICLE LIGHTING SYSTEMS AND TMA DELINEATION
1180.01	SKINNY-DRUM
1205.01	PAVEMENT MARKINGS - LINE TYPES AND OFFSETS
1205.02	PAVEMENT MARKINGS - TWO-LANE AND MULTI-LANE ROADWAYS
1205.12	PAVEMENT MARKINGS - BRIDGES
1250.01	RAISED PAVEMENT MARKERS - INSTALLATION SPACING
1251.01	RAISED PAVEMENT MARKERS - PERMANENT AND TEMPORARY
1261.01	GUARDRAIL AND BARRIER DELINEATORS - INSTALLATION SPACING
1261.02	GUARDRAIL AND BARRIER DELINEATORS - TYPES AND MOUNTING
1262.01	GUARDRAIL END DELINEATION
1264.01	OBJECT MARKERS - TYPES
1264.02	OBJECT MARKERS - INSTALLATION

LEGEND

GENERAL

-  DIRECTION OF TRAFFIC FLOW
-  EXIST. PVMT.
-  NORTH ARROW
-  PROPOSED PVMT.



 WORK AREA

 REMOVAL




PAVEMENT MARKINGS

-  EXISTING LINES
-  TEMPORARY LINES




TRAFFIC CONTROL DEVICES

-  BARRICADE (TYPE III)
-  DRUM
-  FLAGGER

TEMPORARY SIGNING

-  PORTABLE SIGN
-  STATIONARY SIGN
-  STATIONARY OR PORTABLE SIGN

PAVEMENT MARKERS

-  CRYSTAL/CRYSTAL
-  CRYSTAL/RED
-  YELLOW/YELLOW

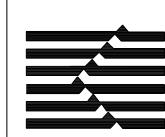
PAVEMENT MARKING SYMBOLS

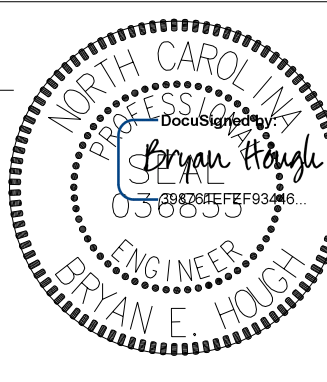
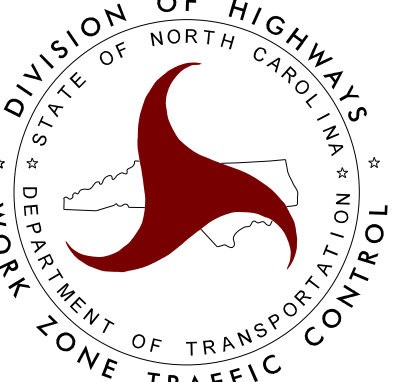
-  PAVEMENT MARKING SYMBOLS

TEMPORARY PAVEMENT MARKING

DESCRIPTION	PAY ITEM
PA WHITE EDGELINE (2X)	PAINT (4")
PI YELLOW DOUBLE CENTER LINE (2X)	PAINT (4")

3/23/2020 10:25:18 AM M:\2018\251801945\21B-5662\TrafficControl\TCP\B5662_TC_TMP_01A.dgn User: bryan.hough

 **KCI** Engineers • Planners • Scientists • Construction Managers
4601 Six Forks Road, Landmark Center II, Suite 220
Raleigh, NC 27609-5210
Phone (919) 783-9214 • Fax (919) 783-9266

APPROVED: _____ DATE: 4/22/2020 SEAL			ROADWAY STANDARD DRAWINGS & LEGEND
--	---	---	---------------------------------------

GENERAL NOTES

CHANGES MAY BE REQUIRED WHEN PHYSICAL DIMENSIONS IN THE DETAIL DRAWINGS, STANDARD DETAILS, AND ROADWAY DETAILS ARE NOT ATTAINABLE TO MEET FIELD CONDITIONS OR RESULT IN DUPLICATE OR UNDESIRABLE OVERLAPPING OF DEVICES. MODIFICATION MAY INCLUDE: MOVING, SUPPLEMENTING, COVERING, OR REMOVAL OF DEVICES AS DIRECTED BY THE ENGINEER.

THE FOLLOWING GENERAL NOTES APPLY AT ALL TIMES FOR THE DURATION OF THE CONSTRUCTION PROJECT EXCEPT WHEN OTHERWISE NOTED IN THE PLAN OR DIRECTED BY THE ENGINEER.

LANE AND SHOULDER CLOSURE REQUIREMENTS

- A) REMOVE LANE CLOSURE DEVICES FROM THE LANE WHEN WORK IS NOT BEING PERFORMED BEHIND THE LANE CLOSURE OR WHEN A LANE CLOSURE IS NO LONGER NEEDED OR AS DIRECTED BY THE ENGINEER.
- B) WHEN PERSONNEL AND/OR EQUIPMENT ARE WORKING WITHIN 15 FT OF AN OPEN TRAVEL LANE, CLOSE THE NEAREST OPEN SHOULDER USING ROADWAY STANDARD DRAWING NO. 1101.04 UNLESS THE WORK AREA IS PROTECTED BY BARRIER OR GUARDRAIL OR A LANE CLOSURE IS INSTALLED.
- C) WHEN PERSONNEL AND/OR EQUIPMENT ARE WORKING ON THE SHOULDER ADJACENT TO AN UNDIVIDED FACILITY AND WITHIN 5 FT OF AN OPEN TRAVEL LANE, CLOSE THE NEAREST OPEN TRAVEL LANE USING ROADWAY STANDARD DRAWING NO. 1101.02 UNLESS THE WORK AREA IS PROTECTED BY BARRIER OR GUARDRAIL.
- D) WHEN PERSONNEL AND/OR EQUIPMENT ARE WORKING WITHIN A LANE OF TRAVEL OF AN UNDIVIDED OR DIVIDED FACILITY, CLOSE THE LANE ACCORDING TO THE TRAFFIC CONTROL PLANS, ROADWAY STANDARD DRAWINGS, OR AS DIRECTED BY THE ENGINEER. CONDUCT THE WORK SO THAT ALL PERSONNEL AND/OR EQUIPMENT REMAIN WITHIN THE CLOSED TRAVEL LANE.
- E) DO NOT WORK SIMULTANEOUSLY WITHIN 15 FT ON BOTH SIDES OF AN OPEN TRAVELWAY, RAMP, OR LOOP WITHIN THE SAME LOCATION UNLESS PROTECTED WITH GUARDRAIL OR BARRIER.

PAVEMENT EDGE DROP OFF REQUIREMENTS

- F) BACKFILL AT A 6:1 SLOPE UP TO THE EDGE AND ELEVATION OF EXISTING PAVEMENT IN AREAS ADJACENT TO AN OPENED TRAVEL LANE THAT HAS AN EDGE OF PAVEMENT DROP-OFF AS FOLLOWS:

 BACKFILL DROP-OFFS THAT EXCEED 2 INCHES ON ROADWAYS WITH POSTED SPEED LIMITS OF 45 MPH OR GREATER.

 BACKFILL DROP-OFFS THAT EXCEED 3 INCHES ON ROADWAYS WITH POSTED SPEED LIMITS LESS THAN 45 MPH.

 BACKFILL WITH SUITABLE COMPACTED MATERIAL, AS APPROVED BY THE ENGINEER, AT NO EXPENSE TO THE DEPARTMENT.
- G) DO NOT EXCEED A DIFFERENCE OF 2 INCHES IN ELEVATION BETWEEN OPEN LANES OF TRAFFIC FOR NOMINAL LIFTS OF 1.5 INCHES. INSTALL ADVANCE WARNING "UNEVEN LANES" SIGNS (W8-11) 100 ft IN ADVANCE AND A MINIMUM OF EVERY HALF MILE THROUGHOUT THE UNEVEN AREA.

TRAFFIC PATTERN ALTERATIONS

- H) NOTIFY THE ENGINEER THIRTY (30) CALENDAR DAYS PRIOR TO ANY TRAFFIC PATTERN ALTERATION.

SIGNING

- I) INSTALL ADVANCE WORK ZONE WARNING SIGNS WHEN WORK IS WITHIN 40 FT FROM THE EDGE OF TRAVEL LANE AND NO MORE THAN THREE (3) DAYS PRIOR TO THE BEGINNING OF CONSTRUCTION.
- J) ENSURE ALL NECESSARY SIGNING IS IN PLACE PRIOR TO ALTERING ANY TRAFFIC PATTERN.
- K) INSTALL BLACK ON ORANGE "DIP" SIGNS (W8-2) AND/OR "BUMP" SIGNS (W8-1) 100 ft IN ADVANCE OF THE UNEVEN AREA, OR AS DIRECTED BY THE ENGINEER.

TRAFFIC CONTROL DEVICES

- L) WHEN LANE CLOSURES ARE NOT IN EFFECT SPACE CHANNELIZING DEVICES IN WORK AREAS NO GREATER IN FEET THAN TWICE THE POSTED SPEED LIMIT (MPH) EXCEPT, 10 FT ON-CENTER IN RADII, AND 3 FT OFF THE EDGE OF AN OPEN TRAVELWAY. REFER TO STANDARD SPECIFICATIONS FOR ROADS AND STRUCTURES SECTION 1130 (DRUMS) FOR ADDITIONAL REQUIREMENTS.

- M) PLACE TYPE III BARRICADES, WITH "ROAD CLOSED" SIGN R11-2 ATTACHED, OF SUFFICIENT LENGTH TO CLOSE ENTIRE ROADWAY.

PAVEMENT MARKINGS AND MARKERS

- N) INSTALL TEMPORARY PAVEMENT MARKINGS AND TEMPORARY PAVEMENT MARKERS ON INTERIM LAYERS OF PAVEMENT AS FOLLOWS:

ROAD NAME	MARKING	MARKER
NC 561	PAINT	TEMPORARY RAISED

- O) PLACE ONE APPLICATION OF PAINT FOR TEMPORARY TRAFFIC PATTERNS. PLACE A SECOND APPLICATION OF PAINT SIX (6) MONTHS AFTER THE INITIAL APPLICATION AND EVERY SIX MONTHS AS DIRECTED BY THE ENGINEER.

- P) TIE PROPOSED PAVEMENT MARKING LINES TO EXISTING PAVEMENT MARKING LINES.

- Q) REMOVE/REPLACE ANY CONFLICTING/DAMAGED PAVEMENT MARKINGS AND MARKERS BY THE END OF EACH DAY'S OPERATION.

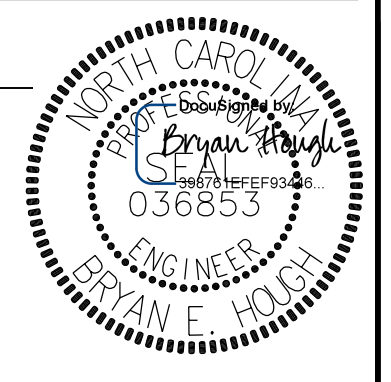
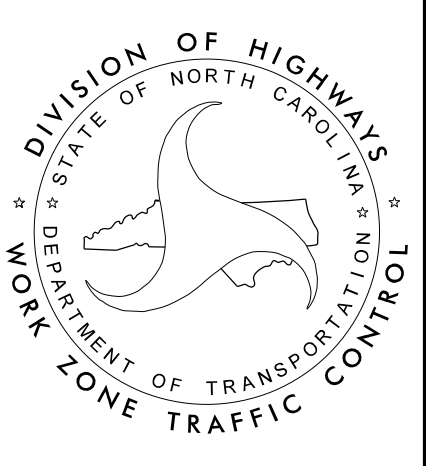
MISCELLANEOUS

- S) IN THE EVENT A TIE-IN CANNOT BE MADE IN ONE DAY'S TIME, BRING THE TIE-IN AREA TO AN APPROPRIATE ROADWAY ELEVATION AS DETERMINED BY THE ENGINEER. PLACE BLACK ON ORANGE "LOOSE GRAVEL" SIGNS (W8-7) AND BLACK ON ORANGE "PAVEMENT ENDS" SIGNS (W8-3) 100 ft AND 200 ft RESPECTIVELY IN ADVANCE OF THE UNEVEN AREAS. USE DRUMS TO DELINEATE THE EDGE OF ROADWAY ALONG UNPAVED AREAS.

MANAGEMENT STRATEGIES

TRAFFIC WILL BE MAINTAINED VIA AN ON-SITE DETOUR DURING CONSTRUCTION OF THE PROPOSED BRIDGE

22-APR-2020 11:09 AM \\2018\251801945\21B-5662\TrafficControl\TC-TMP-01B.dgn \$\$\$USERNAME\$\$\$

APPROVED: _____ DATE: 4/22/2020			<h3 style="margin: 0;">TRANSPORTATION OPERATIONS PLAN</h3>
--	---	---	--

PROJ. REFERENCE NO.	SHEET NO.
B-5662	TMP-3

PHASING

NOTE: MAINTAIN ACCESS TO DRIVEWAYS AT ALL TIMES.

PHASE 1

STEP 1: USING RSD 1101.01, SHEET 3 OF 3. INSTALL WORK ZONE ADVANCE WARNING SIGNS

STEP 2: USING RSD 1101.02, SHEET 1 OF 14, CONSTRUCT -DET-.

PHASE 2

STEP 1: USING RSD 1101.02, SHEET 1 OF 14, WEDGE TIE-INS OF -DET-, PLACE TEMPORARY PAVEMENT MARKINGS AND TRAFFIC CONTROL DEVICES USING RSD 1101.03, SHEET 3 OF 9. SHIFT 2 LANE, 2 WAY TRAFFIC ONTO DETOUR.

STEP 2: CONSTRUCT -L- (NC 561) UP TO BUT NOT INCLUDING THE FINAL LAYER OF SURFACE COURSE FROM STA 13+40± TO STA 17+60±.

PHASE 3

STEP 1: CONSTRUCT -L- (NC 561) UP TO BUT NOT INCLUDING THE FINAL LAYER OF SURFACE COURSE FROM STA. 10+00± TO STA. 13+40± AND STA. 17+60± TO STA. 20+31± USING RSD 1101.02, SHEET 1 OF 14.

STEP 2: USING RSD 1101.02, SHEET 1 OF 14 PLACE TEMPORARY PAVEMENT MARKINGS ON -L- FROM STA. 10+00.00 TO STA 20+30.72.

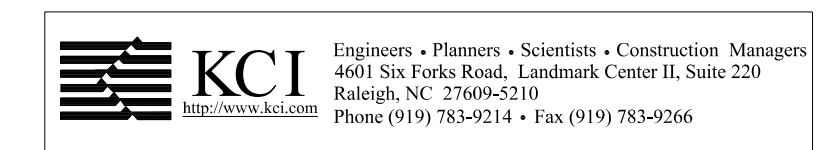
SWITCH TRAFFIC ONTO PROPOSED -L- IN A 2 LANE, 2 WAY TRAFFIC PATTERN.

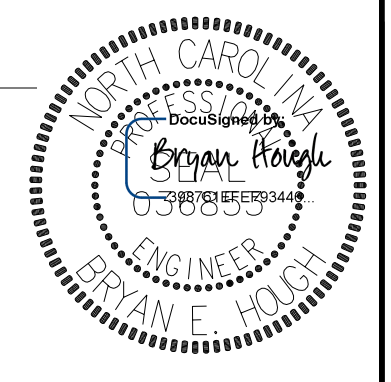
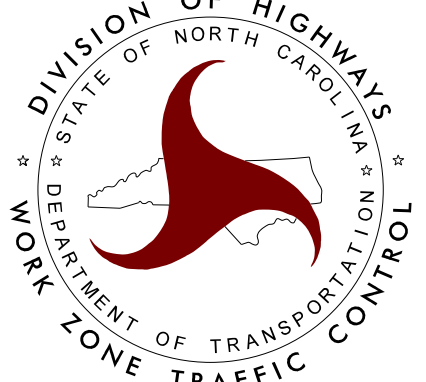
STEP 3: PLACE TYPE III BARRICADES AND DRUMS ON DETOUR (REFER TO TMP-4 FOR SETUP). REMOVE DETOUR AND TEMPORARY GUARDRAIL.

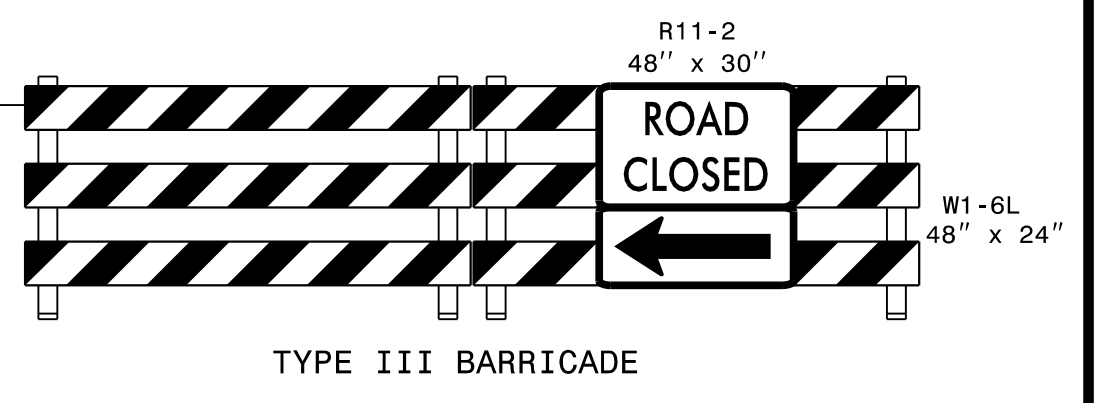
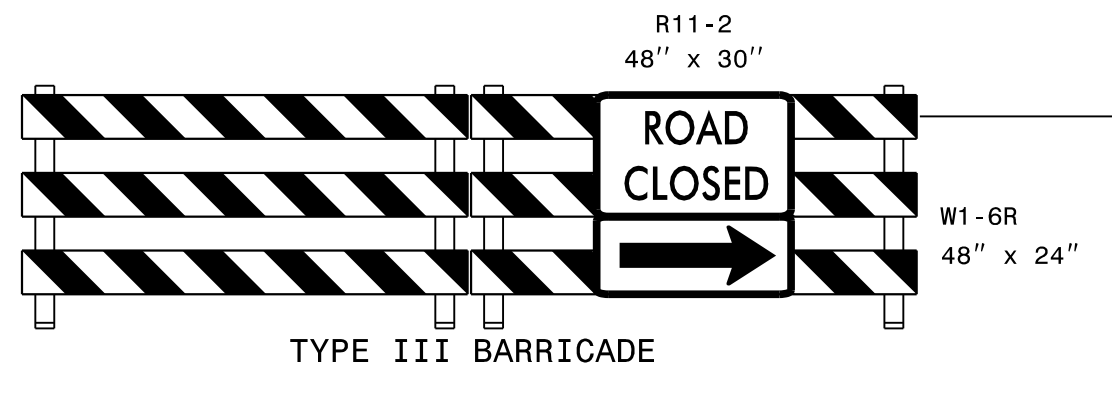
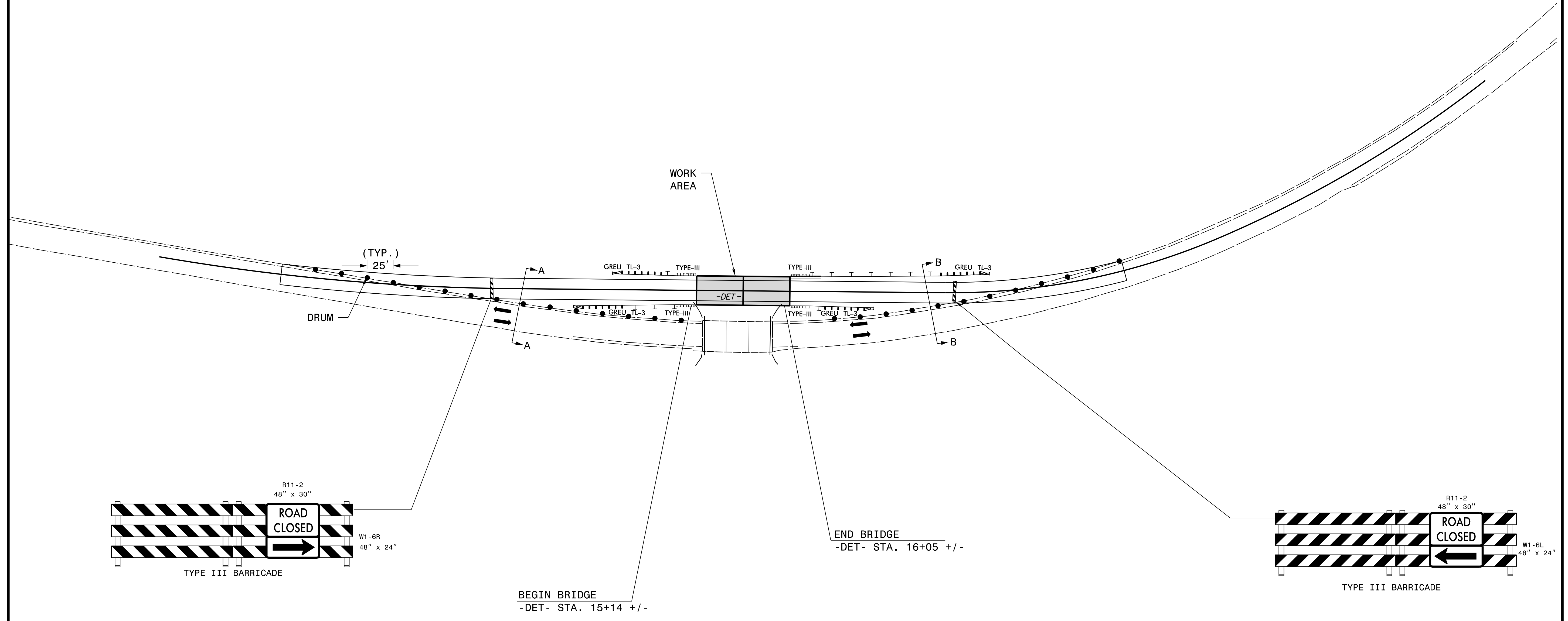
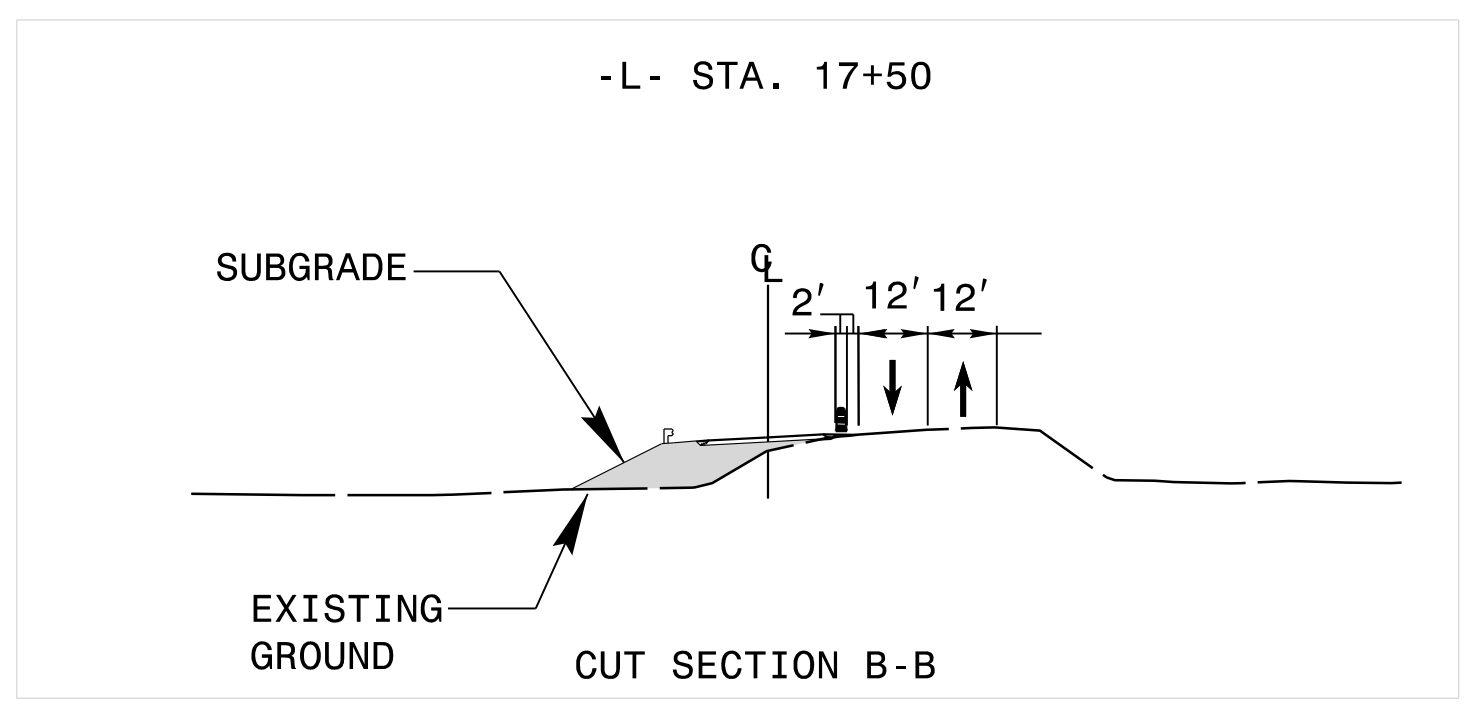
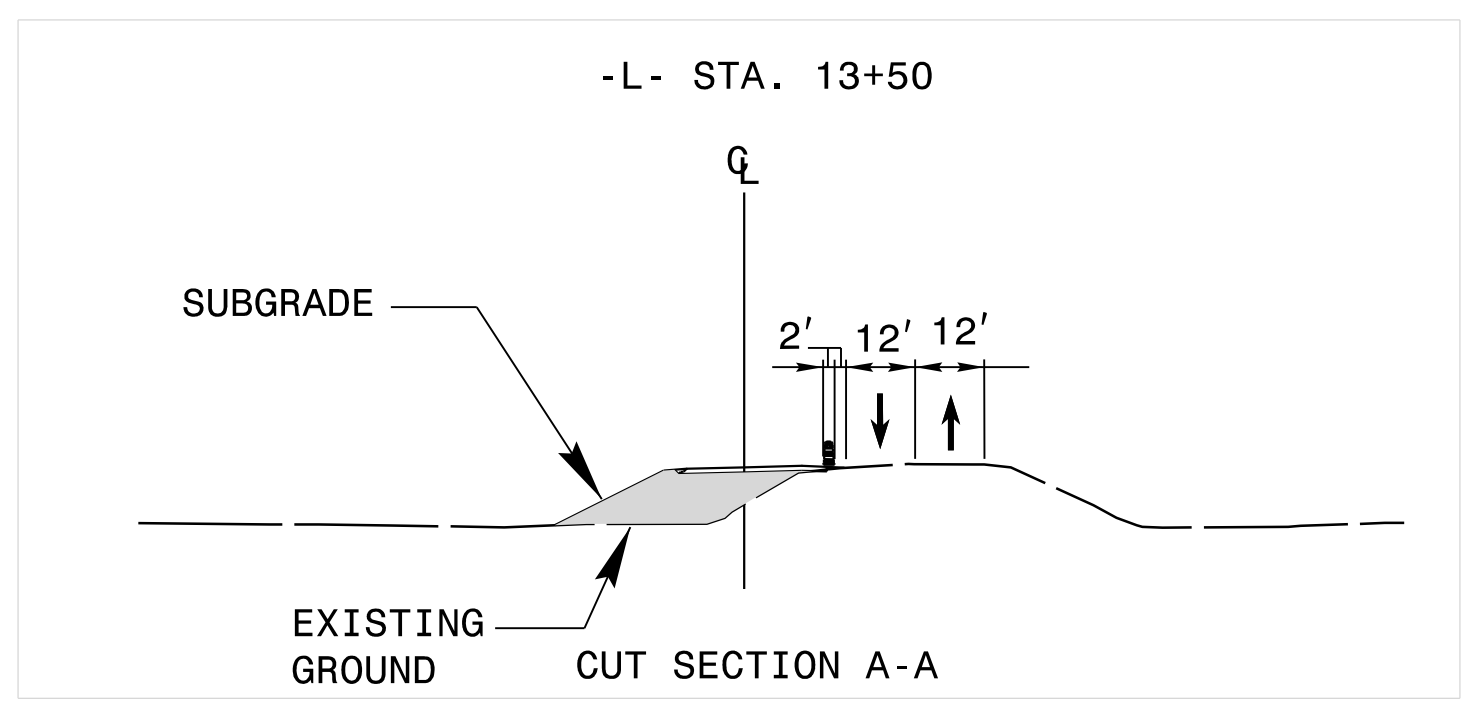
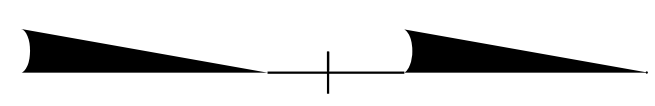
STEP 4: USING RSD 1101.02, SHEET 1 OF 14, PLACE FINAL LAYER OF SURFACE COURSE AND FINAL PAVEMENT MARKINGS ON -L-.

STEP 5: REMOVE ALL TRAFFIC CONTROL DEVICES.

3/23/2020
M:\2018\25801945\21B-5662\TrafficControl\TCP\B5662_TC_TMP-03.dgn
User: bryan.hough



APPROVED: _____ DATE: 4/22/2020			<h2 style="margin: 0;">PHASING</h2>
------------------------------------	---	---	-------------------------------------



KCI Engineers • Planners • Scientists • Construction Managers
 4601 Six Forks Road, Landmark Center II, Suite 220
 Raleigh, NC 27609-5210
 Phone (919) 783-9214 • Fax (919) 783-9266

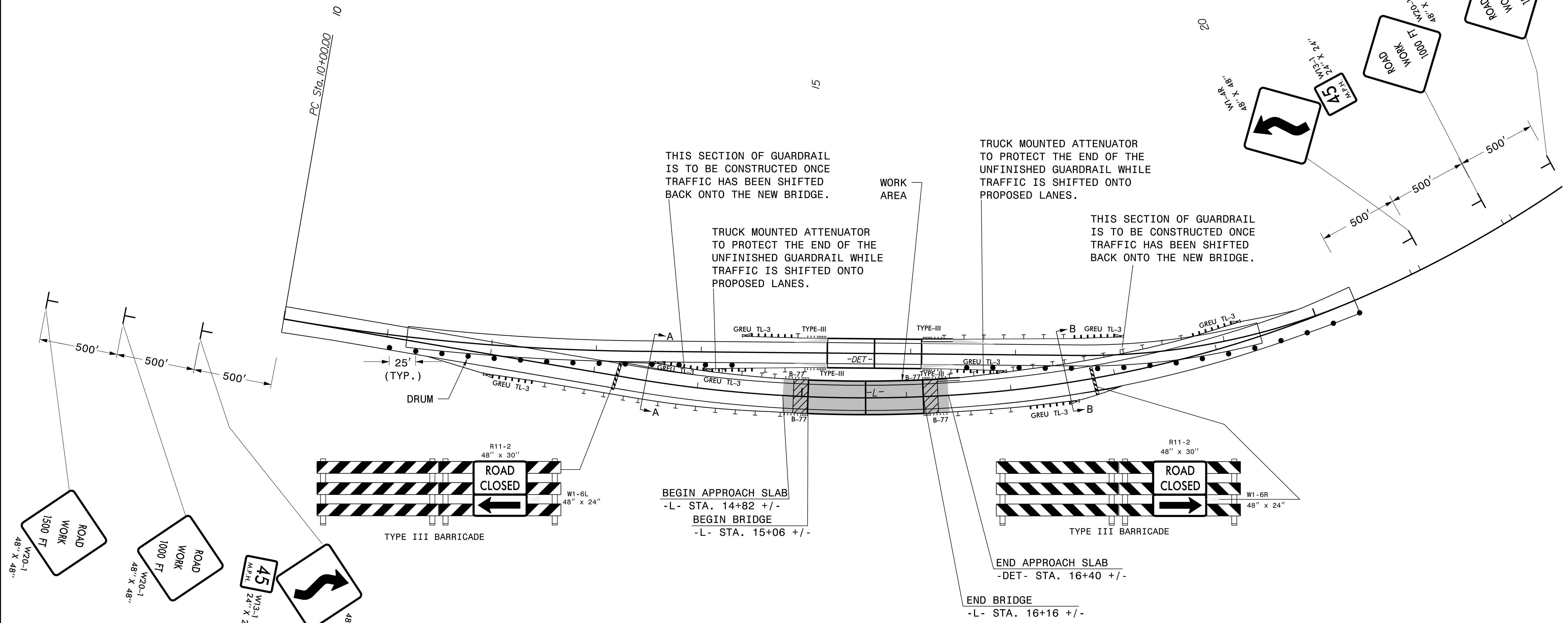
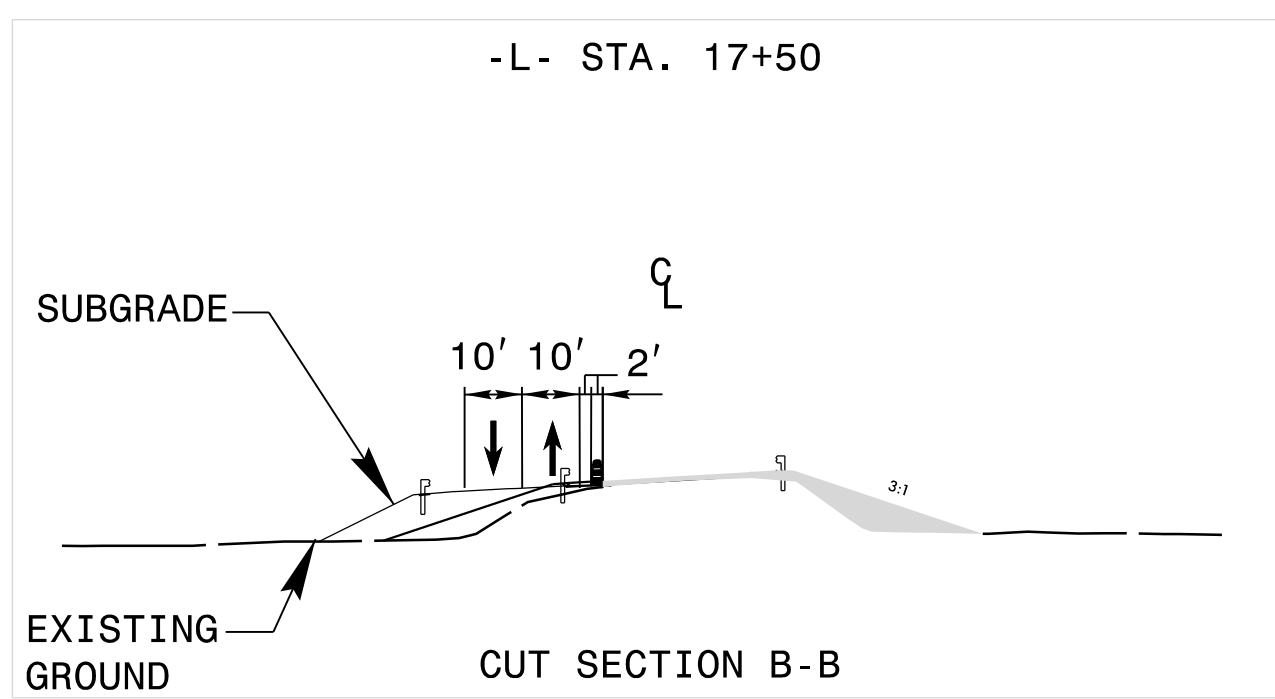
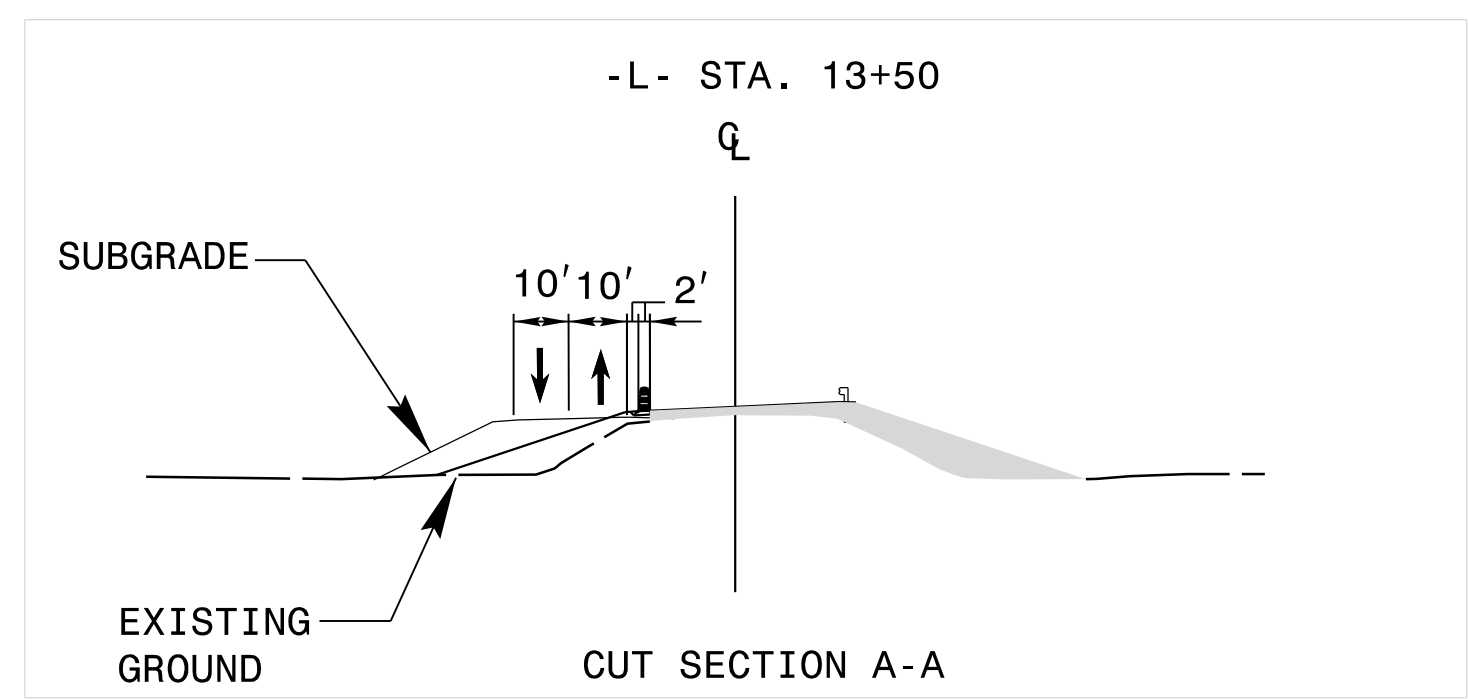
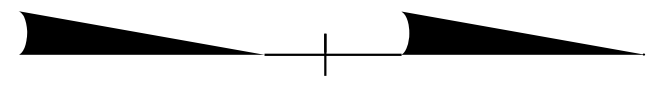
APPROVED: _____ DATE: _____

SEAL

4/22/2020

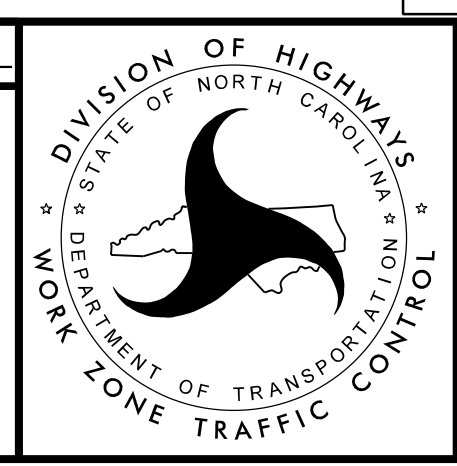


TEMPORARY TRAFFIC CONTROL PHASE 1 DETAIL



APPROVED: _____ DATE: _____

SEAL



KCI Engineers • Planners • Scientists • Construction Managers
 4601 Six Forks Road, Landmark Center II, Suite 220
 Raleigh, NC 27609-5210
 Phone (919) 783-9214 • Fax (919) 783-9266

TEMPORARY TRAFFIC CONTROL PHASE 2 DETAIL