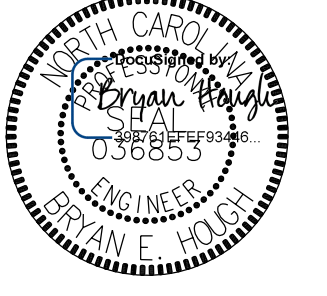



5/14/99

PROJECT REFERENCE NO. <i>B-5662</i>	SHEET NO. <i>5A</i>
ROADWAY DESIGN ENGINEER 	HYDRAULICS ENGINEER 
4/22/2020	4/22/2020

**DOCUMENT NOT CONSIDERED FINAL
UNLESS ALL SIGNATURES COMPLETED**

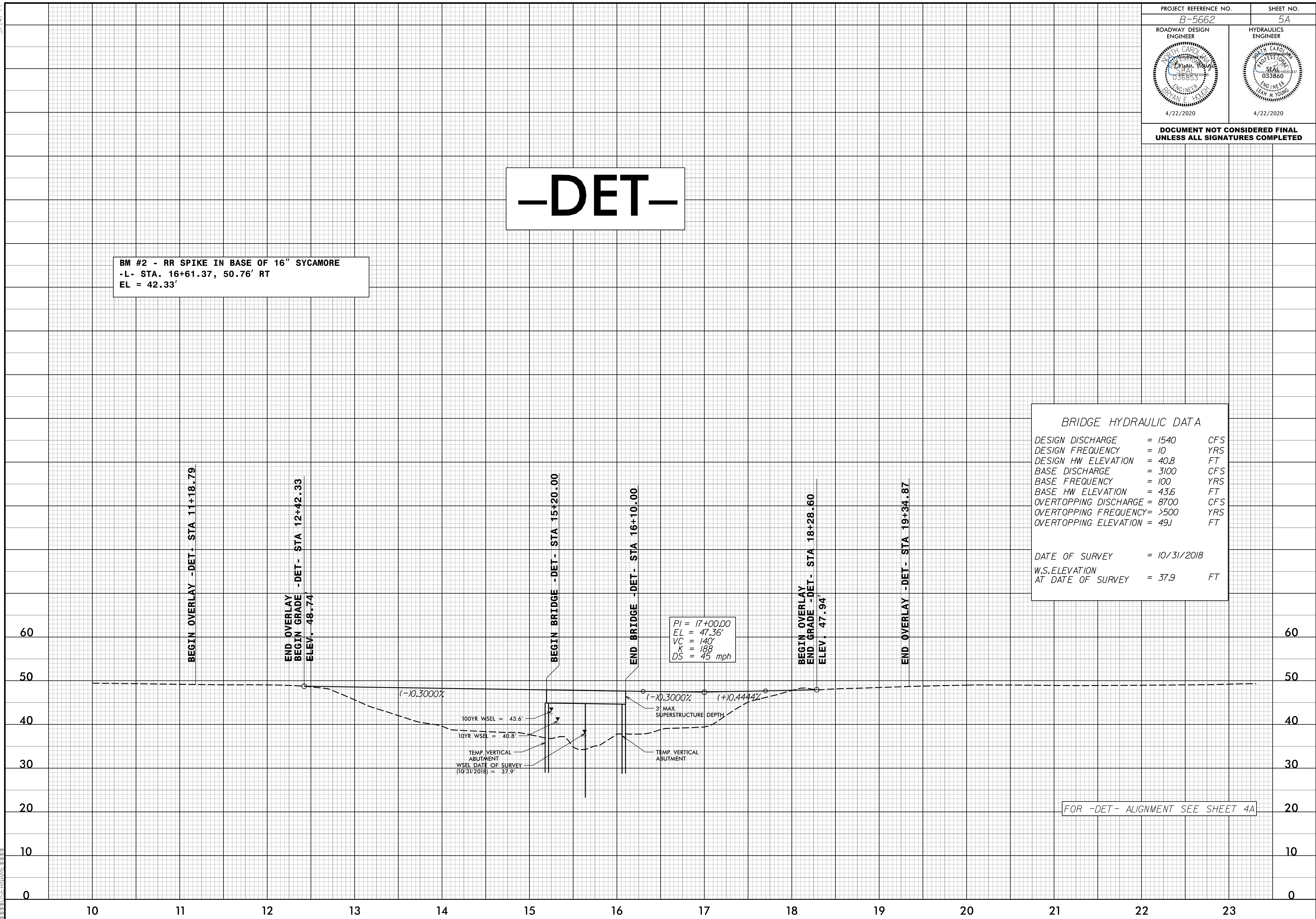
-DET-

BM #2 - RR SPIKE IN BASE OF 16" SYCAMORE
 -L- STA. 16+61.37, 50.76' RT
 EL = 42.33'

BRIDGE HYDRAULIC DATA

DESIGN DISCHARGE	= 1540	CFS
DESIGN FREQUENCY	= 10	YRS
DESIGN HW ELEVATION	= 40.8	FT
BASE DISCHARGE	= 3100	CFS
BASE FREQUENCY	= 100	YRS
BASE HW ELEVATION	= 43.6	FT
OVERTOPPING DISCHARGE	= 8700	CFS
OVERTOPPING FREQUENCY	= >500	YRS
OVERTOPPING ELEVATION	= 49.1	FT

DATE OF SURVEY	= 10/31/2018
W.S. ELEVATION AT DATE OF SURVEY	= 37.9 FT



FOR -DET- ALIGNMENT SEE SHEET 4A

I:\AEP-2020\10226\10226.dwg, 21 B-5662\Roadway\Proc\B-5662.Rdy.pfl, DET.dgn