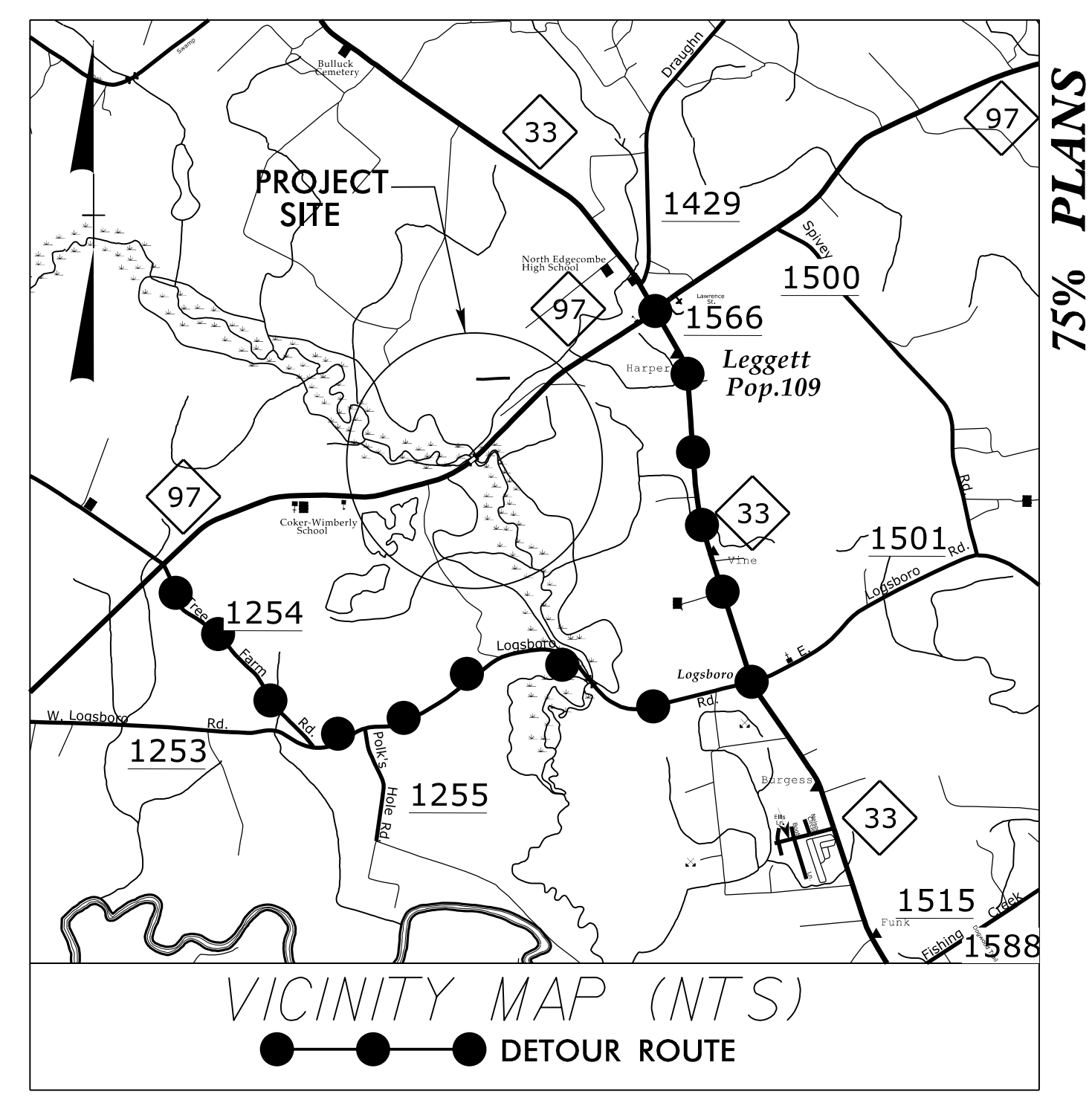


09.08/99

TIP PROJECT: B-5671



75% PLANS

STATE OF NORTH CAROLINA
DIVISION OF HIGHWAYS

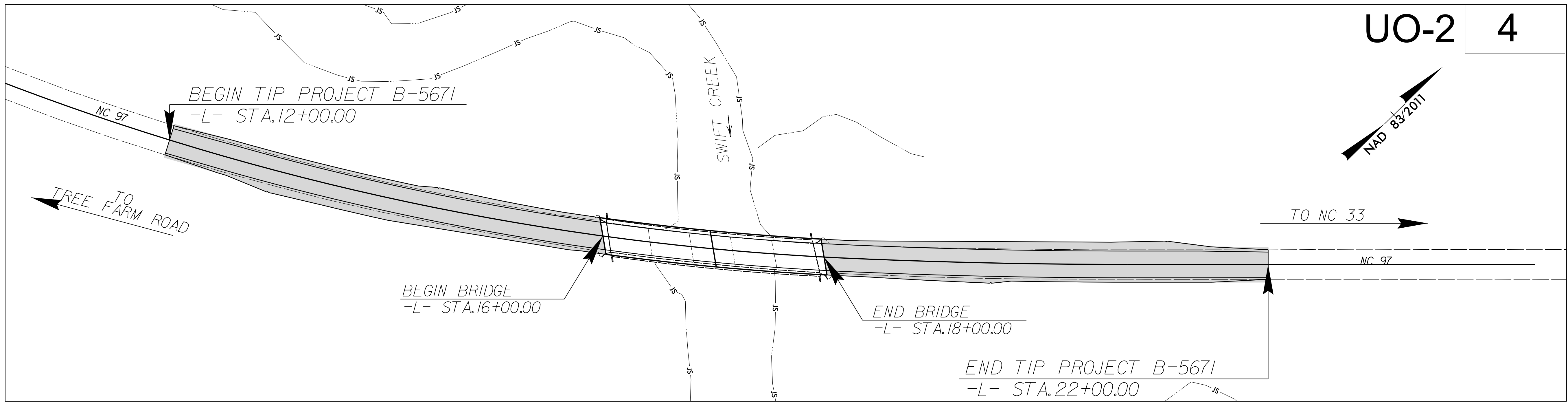
**UTILITIES BY OTHERS PLANS
EDGECOMBE COUNTY**

**LOCATION: REPLACE BRIDGE NO. 87 OVER SWIFT CREEK
ON NC 97**

TYPE OF WORK: RELOCATION OF COMMUNICATION LINES

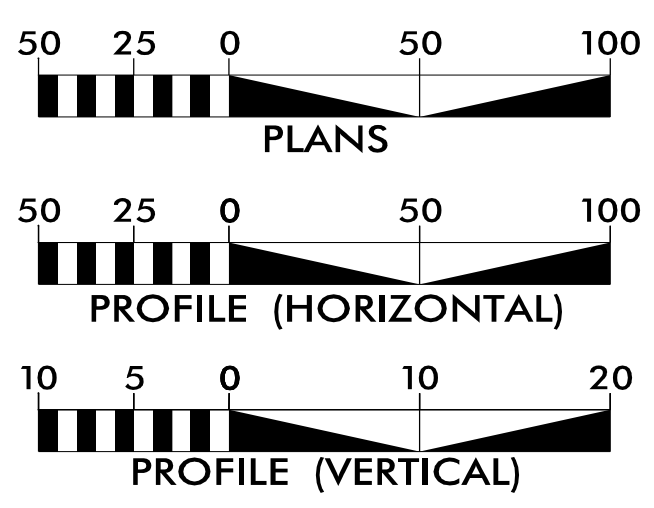
| | |
|------------|-----------|
| T.I.P. NO. | SHEET NO. |
| B-5671 | UO-1 |

NOTE:
ALL UTILITY WORK SHOWN ON THIS SHEET WILL BE DONE BY OTHERS. NO PAYMENT WILL BE MADE TO THE CONTRACTOR FOR UTILITY WORK SHOWN ON THIS SHEET.



UO-2 4

GRAPHIC SCALES

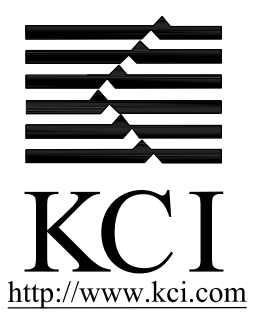


INDEX OF SHEETS

| SHEET NO.: | DESCRIPTION: |
|------------|----------------|
| UO-1 | TITLE SHEET |
| UO-2 | UBO PLAN SHEET |

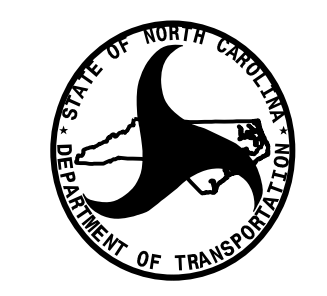
UTILITY OWNERS WITH CONFLICTS

- (A) COMMUNICATION LINES - AT&T
- (B) COMMUNICATION LINES - CENTURYLINK



PREPARED IN THE OFFICE OF:
KCI Associates of N.C., P.A.
4505 Falls of Neuse Road, Suite 400
Raleigh, NC 27609
Phone (919) 783-9214
Fax (919) 783-9266

DEWAYNE L. SYKES, P.E. PROJECT MANAGER
JOHN FAISON PROJECT UTILITY COORDINATOR
DANIEL ALLEN PROJECT UTILITY DESIGNER



**DIVISION OF HIGHWAYS
UTILITIES UNIT**
1555 MAIL SERVICES CENTER
RALEIGH NC 27699-1555
PHONE (919) 707-6690
FAX (919) 250-4151

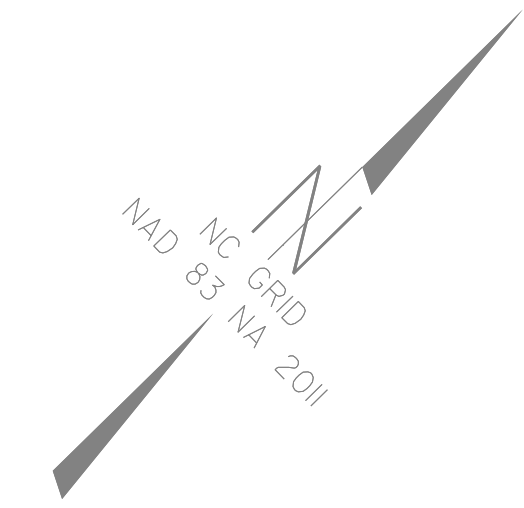
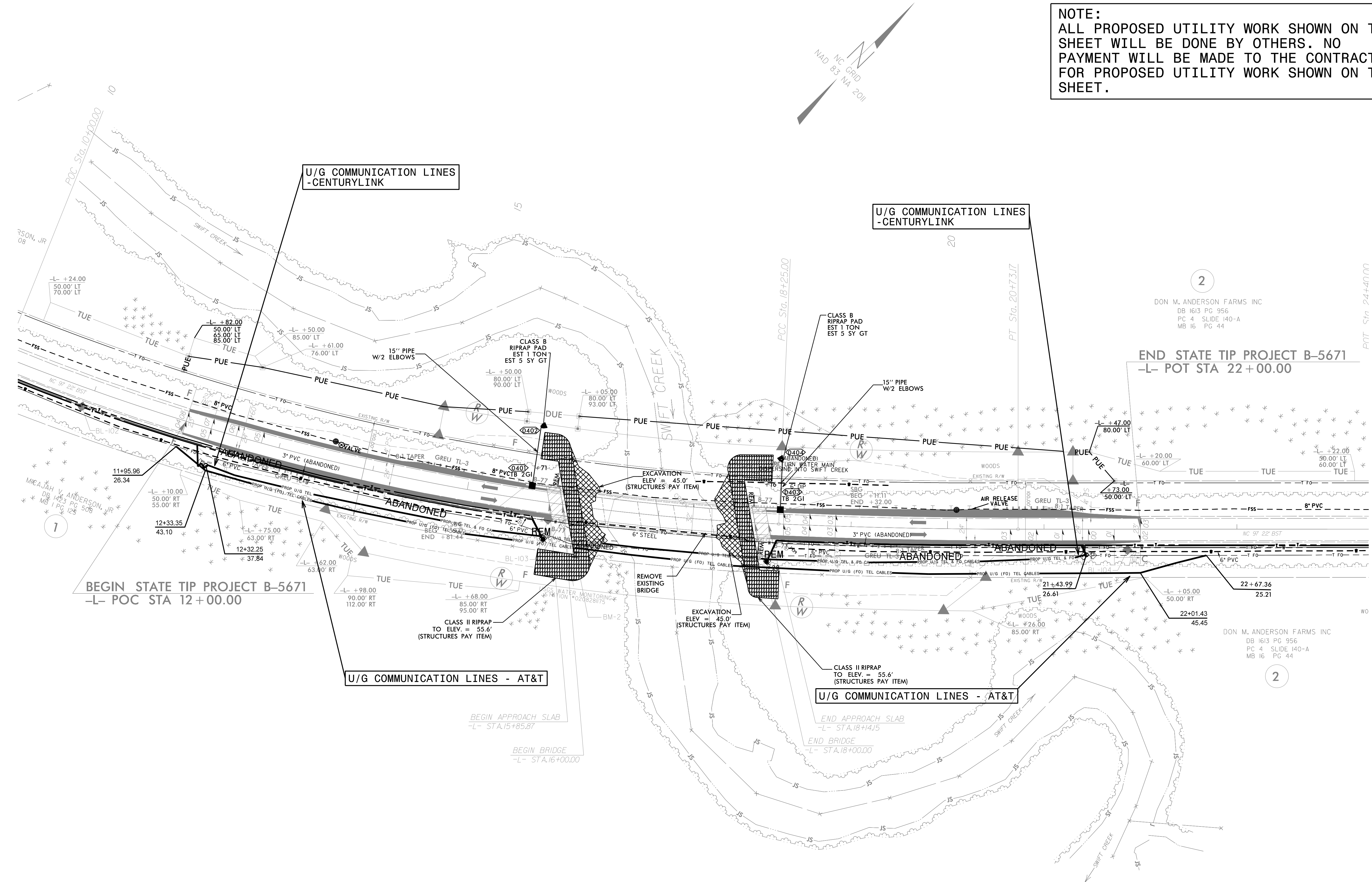
NABIL HAMDAN REGIONAL UTILITIES ENGINEER
KELVIN MARTIN, EI SENIOR UTILITIES ENGINEER
KYLE PLEASANT UTILITIES AREA COORDINATOR
LARRY JAMES JR. UTILITIES COORDINATOR

20-FEB-2020 07:53
M:\2018\1261601945\24 B-5671\Utilities\290_001_B-5671_ut_rdy03_U001_psh.dgn
\$\$\$\$\$SERVNAME\$\$\$\$\$

UTILITIES BY OTHERS
THIS SHEET CORRESPONDS TO RDY-4

NOTE:
ALL PROPOSED UTILITY WORK SHOWN ON THIS SHEET WILL BE DONE BY OTHERS. NO PAYMENT WILL BE MADE TO THE CONTRACTOR FOR PROPOSED UTILITY WORK SHOWN ON THIS SHEET.

8/17/99
02-DEC-2020 10:39
N:\2018\1801945_24 B-5671\Utilities\290.002.B-5671.ut-r-d\04_U002.psh (kelvin M Copy).dgn
MEAJAH V. ANDERSON, JR.
DB 1423 PG 50B
MB 1 PG 12B
DON M. ANDERSON FARMS INC
DB 1613 PG 95B
PC 4 SLIDE 140-A
MB 16 PG 44



2

DON M. ANDERSON FARMS INC
DB 1613 PG 95B
PC 4 SLIDE 140-A
MB 16 PG 44

END STATE TIP PROJECT B-5671
-L- POT STA 22+00.00

1

BEGIN STATE TIP PROJECT B-5671
-L- POC STA 12+00.00

2

DON M. ANDERSON FARMS INC
DB 1613 PG 95B
PC 4 SLIDE 140-A
MB 16 PG 44