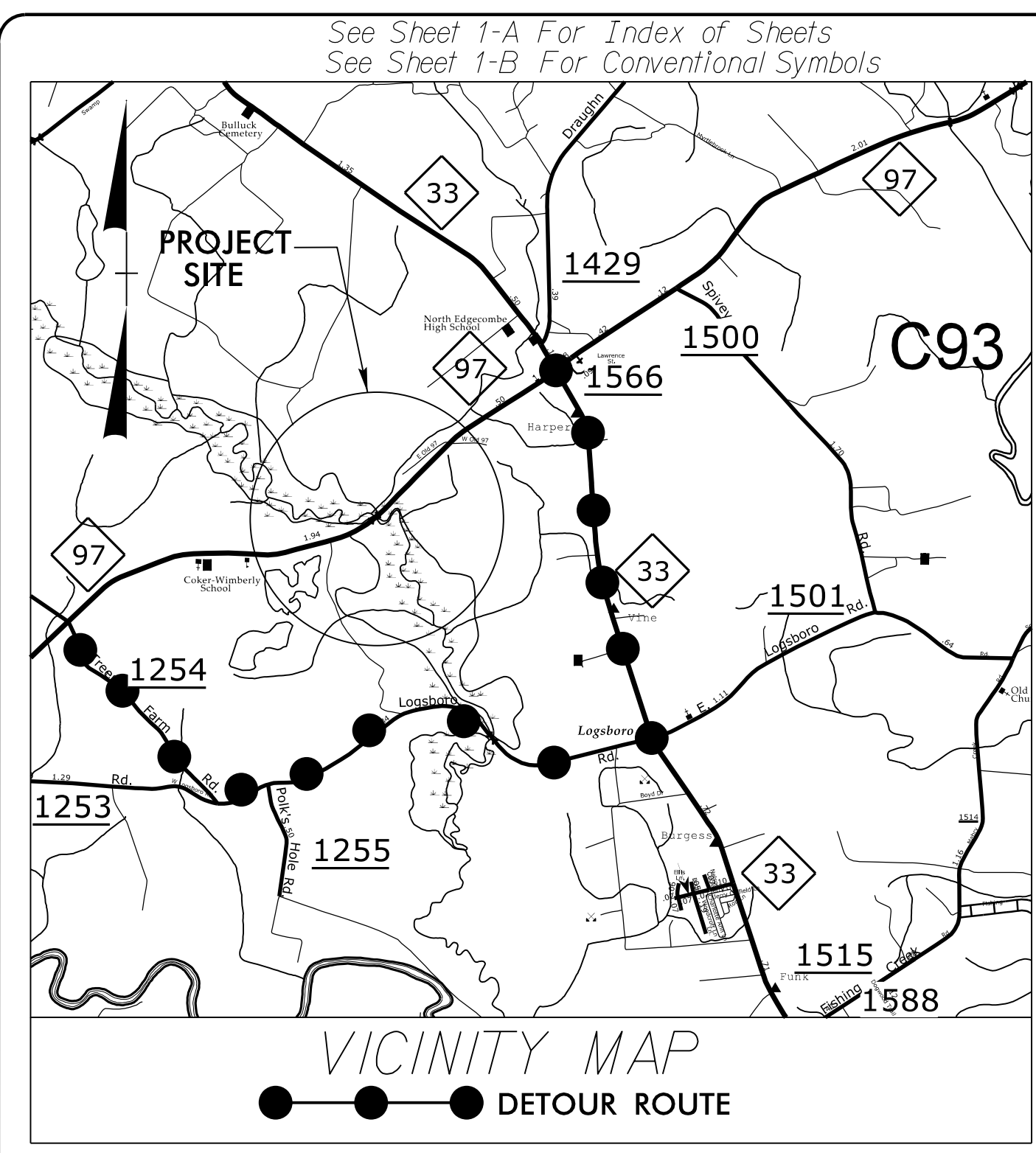


STATE	STATE PROJECT REFERENCE NO.	SHEET NO.	TOTAL SHEETS
N.C.	B-5671	EC-1	
STATE PROJ. NO.	F.A. PROJ. NO.	DESCRIPTION	

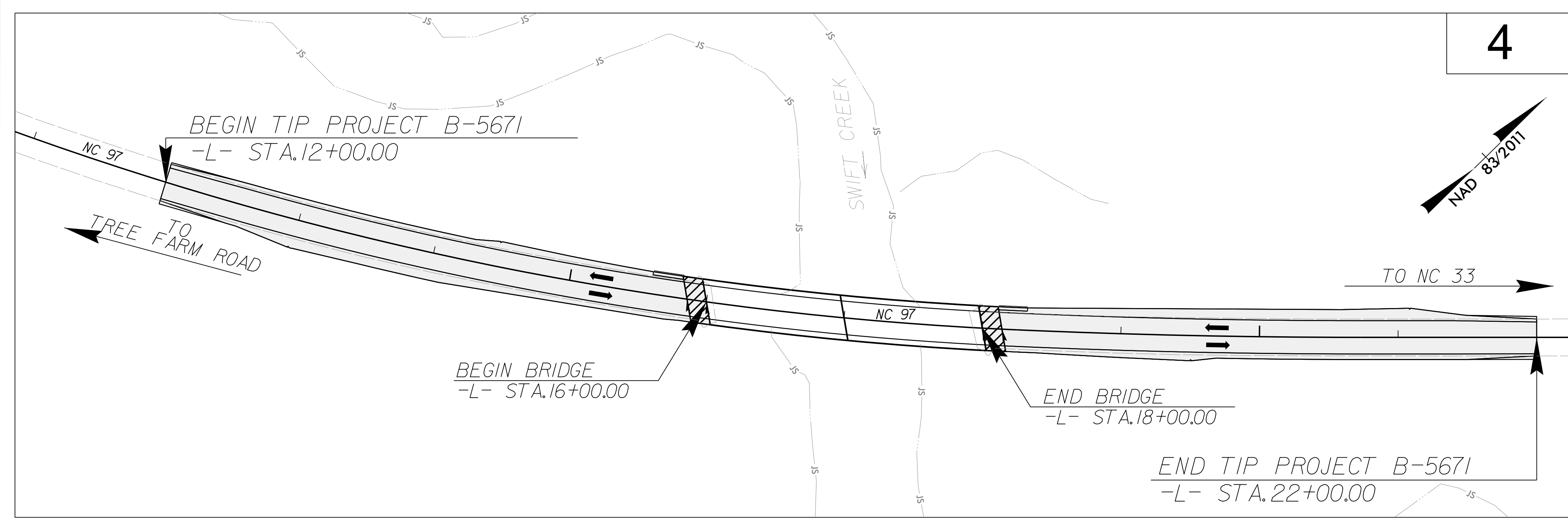
TIP PROJECT: B-5671



STATE OF NORTH CAROLINA
DIVISION OF HIGHWAYS
PLAN FOR PROPOSED
HIGHWAY EROSION CONTROL
EDGECOMBE COUNTY

**LOCATION: REPLACE BRIDGE NO. 87 OVER SWIFT CREEK
ON NC 97**

TYPE OF WORK: GRADING, DRAINAGE, PAVING AND STRUCTURE



THIS PROJECT IS NOT WITHIN MUNICIPAL BOUNDARIES.
CLEARING ON THIS PROJECT SHALL BE PERFORMED TO THE LIMITS ESTABLISHED BY METHOD III.

EROSION AND SEDIMENT CONTROL MEASURES

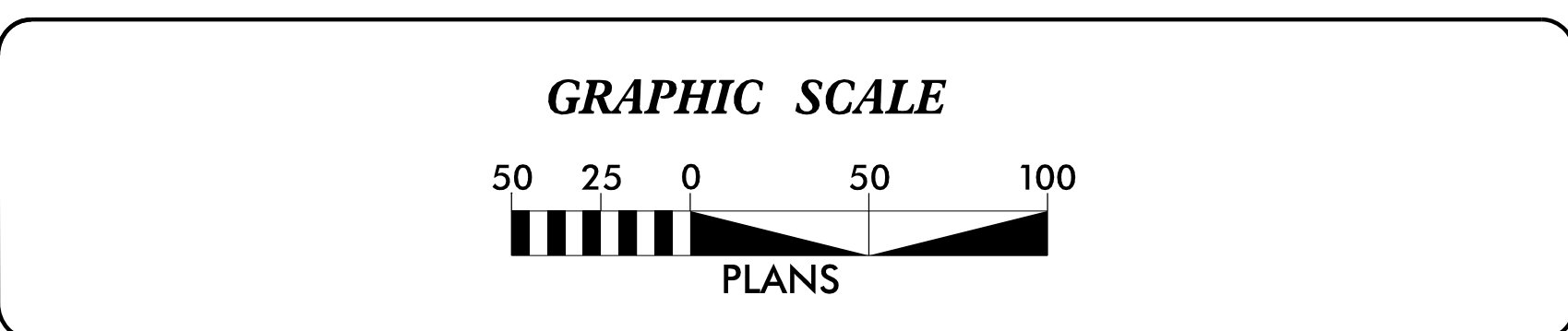
Std. #	Description	Symbol
1630.03	Temporary Silt Ditch	TD
1630.05	Temporary Diversion	TD
1605.01	Temporary Silt Fence	TSF
1606.01	Special Sediment Control Fence	SSCF
1622.01	Temporary Berms and Slope Drains	TBSD
1630.02	Silt Basin Type B	SB
1633.01	Temporary Rock Silt Check Type-A	TRSCA
	Temporary Rock Silt Check Type-A with Matting and Polyacrylamide (PAM)	TRSCA-PAM
1633.02	Temporary Rock Silt Check Type-B	TRSCB
	Wattle / Coir Fiber Wattle	W/CFW
	Wattle / Coir Fiber Wattle with Polyacrylamide (PAM)	W/CFW-PAM
1634.01	Temporary Rock Sediment Dam Type-A	TRSDA
1634.02	Temporary Rock Sediment Dam Type-B	TRSDB
1635.01	Rock Pipe Inlet Sediment Trap Type-A	RPISTRA
1635.02	Rock Pipe Inlet Sediment Trap Type-B	RPISTRB
1630.04	Stilling Basin	SB
1630.06	Special Stilling Basin	SSB
	Rock Inlet Sediment Trap:	
1632.01	Type A	A
1632.02	Type B	B
1632.03	Type C	C
	Skimmer Basin	SKB
	Tiered Skimmer Basin	TSKB
	Infiltration Basin	IB

THIS PROJECT CONTAINS EROSION CONTROL PLANS FOR CLEARING AND GRUBBING PHASE OF CONSTRUCTION.

THIS PROJECT HAS BEEN DESIGNED TO SENSITIVE WATERSHED STANDARDS.

ENVIRONMENTALLY SENSITIVE AREA(S) EXIST ON THIS PROJECT
Refer To E. C. Special Provisions for Special Considerations.

CONTRACT:



THESE EROSION AND SEDIMENT CONTROL PLANS COMPLY WITH THE APPLICABLE REGULATIONS SET FORTH BY THE NCG-010000 GENERAL CONSTRUCTION PERMIT EFFECTIVE APRIL 1, 2019 AND ISSUED BY THE NORTH CAROLINA DEPARTMENT OF ENVIRONMENTAL QUALITY DIVISION OF WATER RESOURCES.

Prepared in the Office of:
KCI ASSOCIATES OF NORTH CAROLINA, PA
4505 FALLS OF NEUSE ROAD
RALEIGH, NC 27609

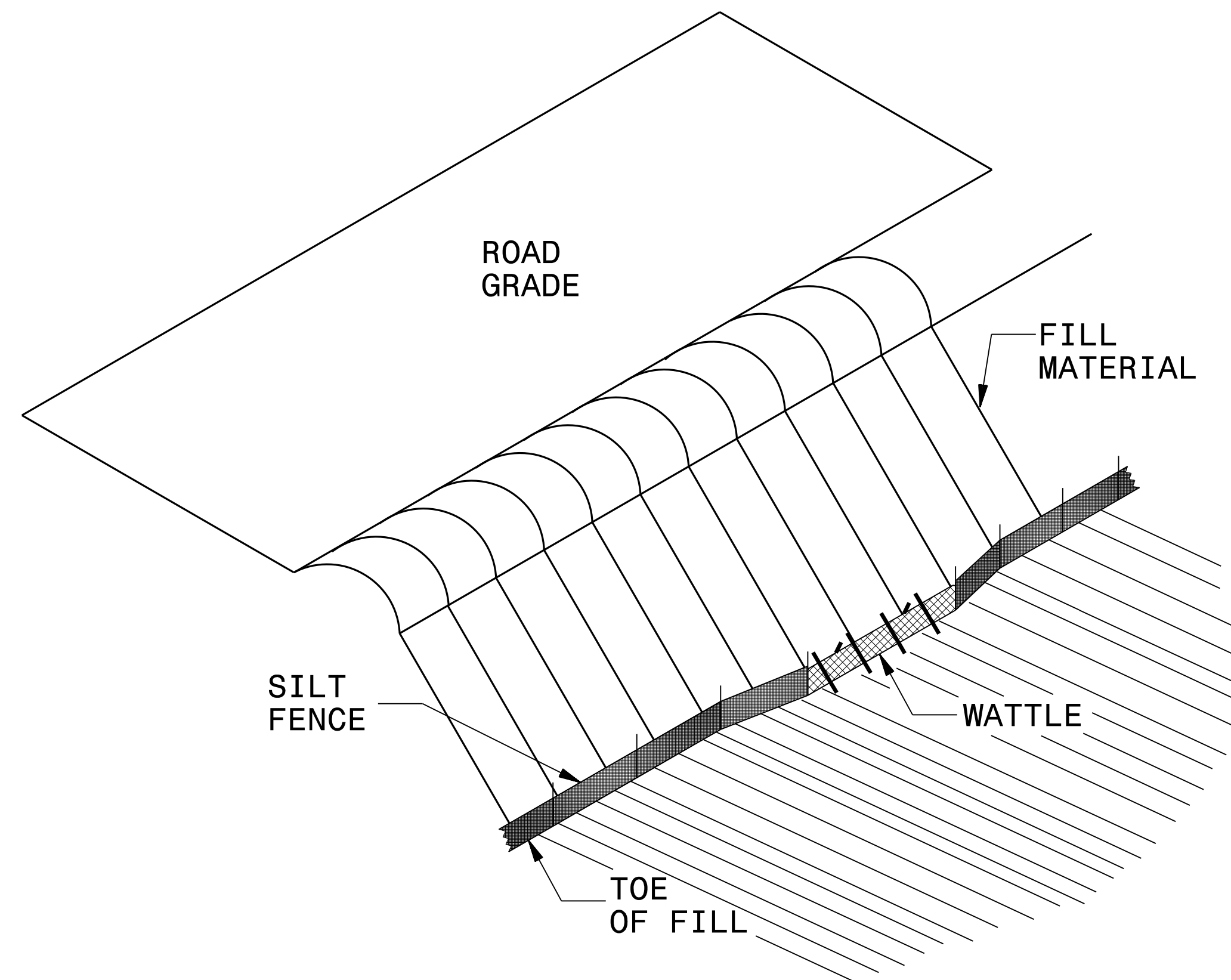
Designed by:
LEAH YOUNG, PE #3157
NAME LEVEL III CERTIFICATION NO.

Roadway Standard Drawings

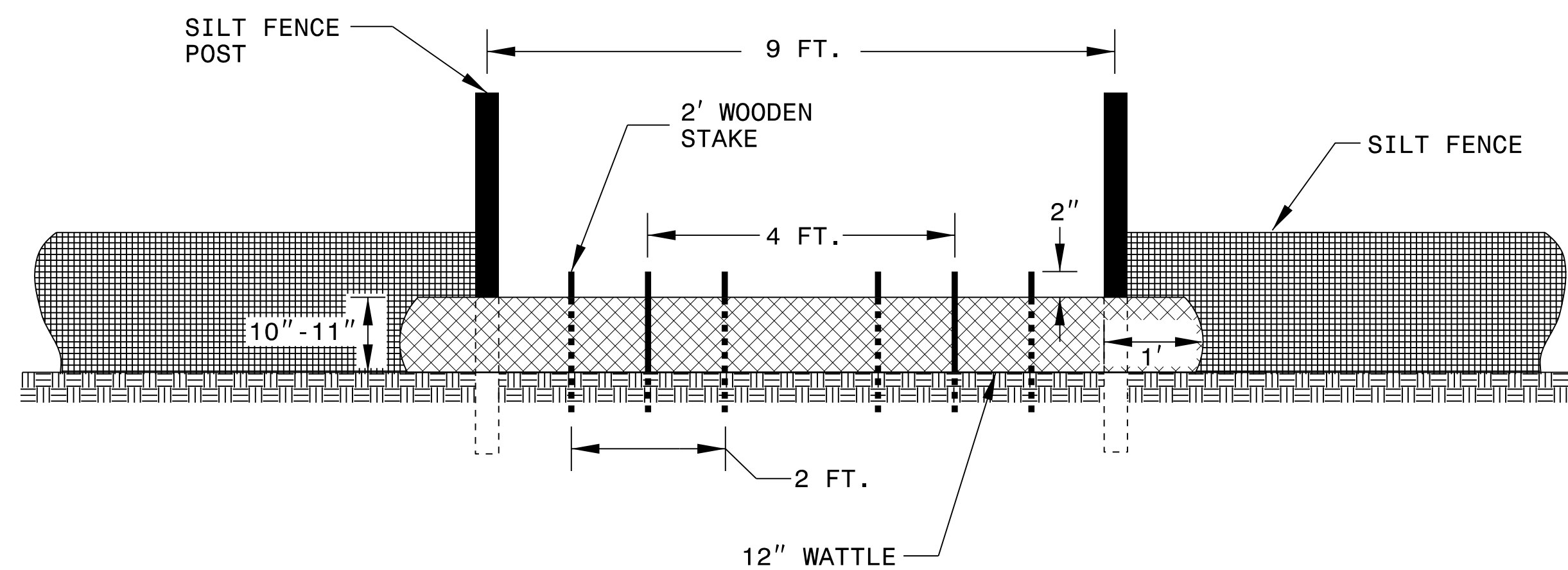
The following roadway english standards as appear in "Roadway Standard Drawings"- Roadway Design Unit - N. C. Department of Transportation - Raleigh, N. C., dated January 2018 and the latest revision thereto are applicable to this project and by reference hereby are considered a part of these plans.

1604.01 Railroad Erosion Control Detail	1632.01 Rock Inlet Sediment Trap Type A
1605.01 Temporary Silt Fence	1632.02 Rock Inlet Sediment Trap Type B
1606.01 Special Sediment Control Fence	1632.03 Rock Inlet Sediment Trap Type C
1607.01 Gravel Construction Entrance	1633.01 Temporary Rock Silt Check Type A
1622.01 Temporary Berms and Slope Drains	1633.02 Temporary Rock Silt Check Type B
1630.01 Riser Basin	1634.01 Temporary Rock Sediment Dam Type A
1630.02 Silt Basin Type B	1634.02 Temporary Rock Sediment Dam Type B
1630.03 Temporary Silt Ditch	1635.01 Rock Pipe Inlet Sediment Trap Type A
1630.04 Stilling Basin	1635.02 Rock Pipe Inlet Sediment Trap Type B
1630.05 Temporary Diversion	1640.01 Coir Fiber Baffle
1630.06 Special Stilling Basin	1645.01 Temporary Stream Crossing
1631.01 Matting Installation	

SILT FENCE COIR FIBER WATTLE BREAK DETAIL



ISOMETRIC VIEW



VIEW FROM SLOPE

NOTES:

USE MINIMUM 12 IN. DIAMETER COIR FIBER (COCONUT FIBER) WATTLE AND LENGTH OF 10 FT.

EXCAVATE A 1 TO 2 INCH TRENCH FOR WATTLE TO BE PLACED.

DO NOT PLACE WATTLE ON TOE OF SLOPE.

USE 2 FT. WOODEN STAKES WITH A 2 IN. BY 2 IN. NOMINAL CROSS SECTION.

INSTALL A MINIMUM OF 2 UPSLOPE STAKES AND 4 DOWNSLOPE STAKES AT AN ANGLE TO WEDGE WATTLE TO GROUND.

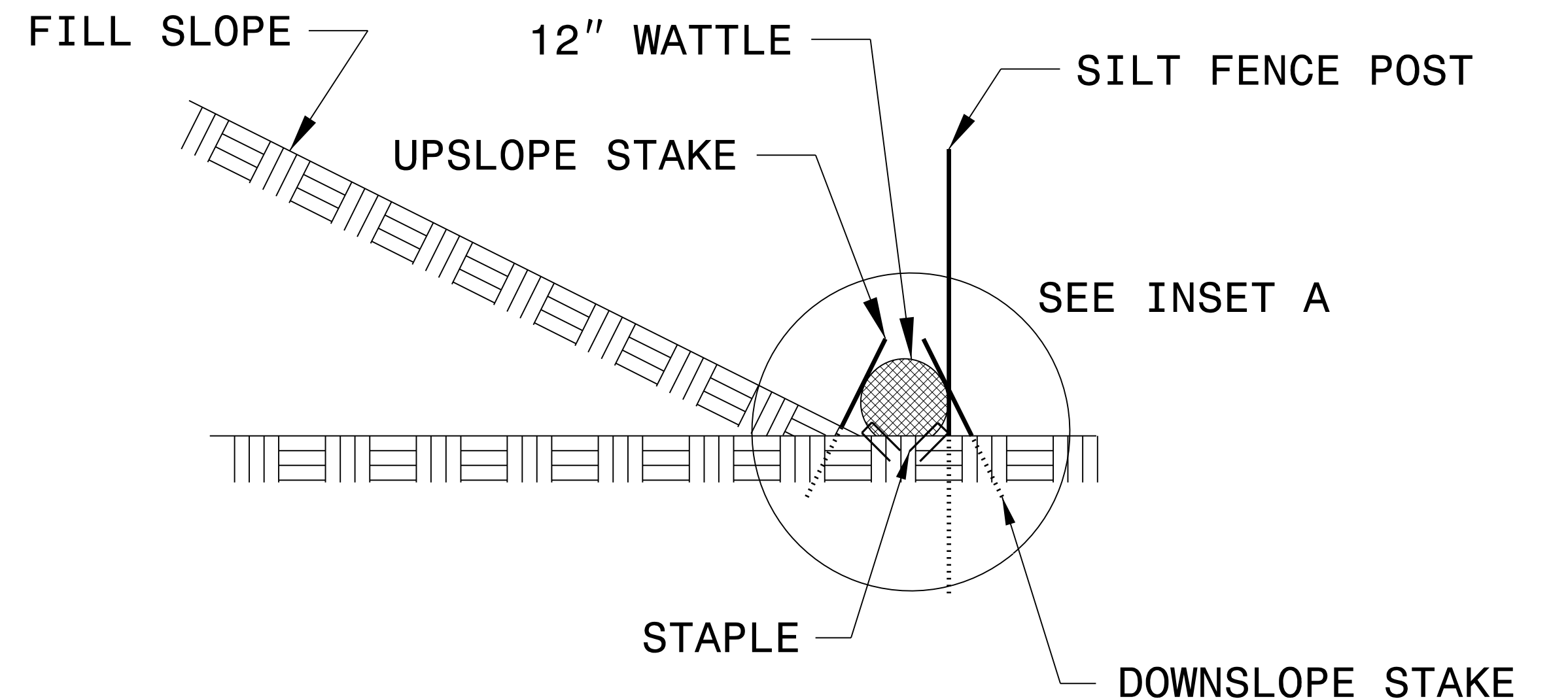
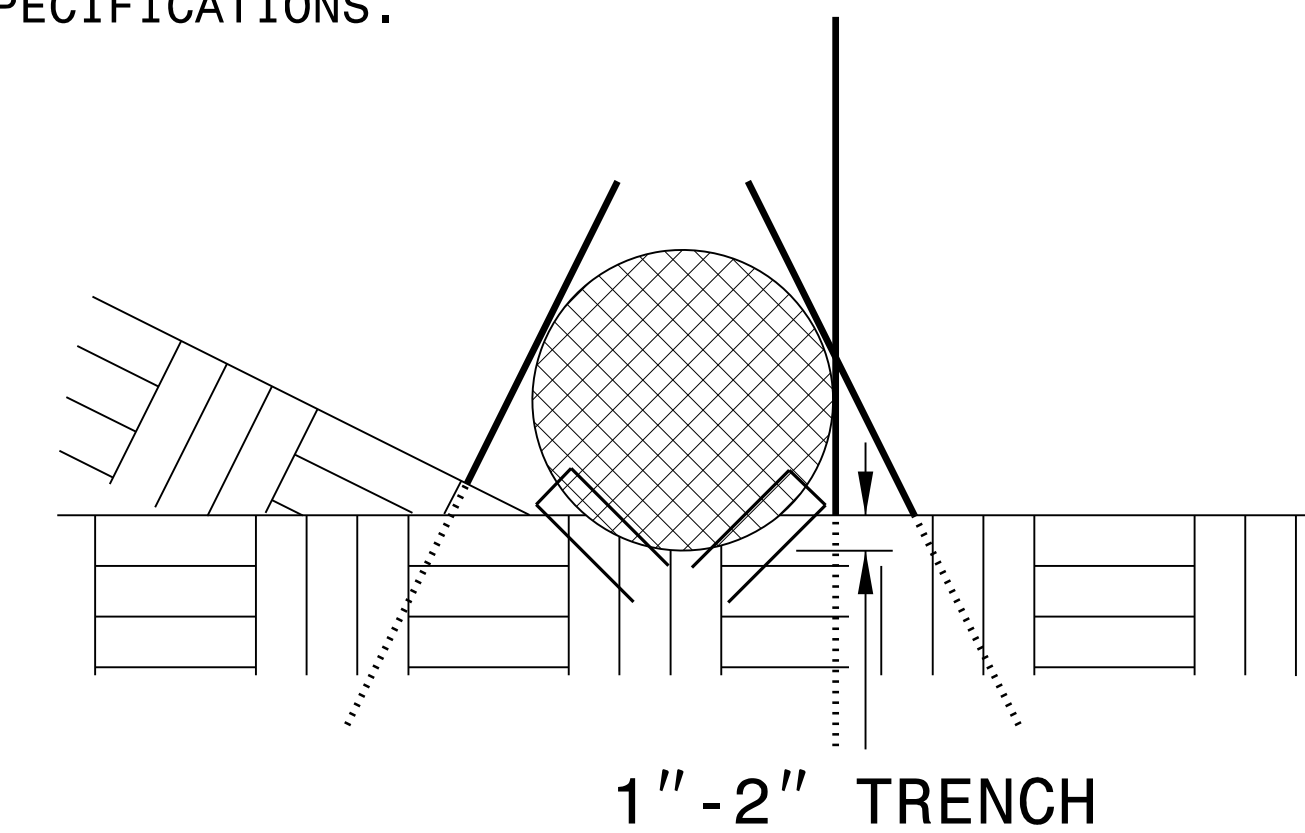
PROVIDE STAPLES MADE OF 0.125 IN. DIAMETER STEEL WIRE FORMED INTO A U SHAPE NOT LESS THAN 12" IN LENGTH.

INSTALL STAPLES APPROXIMATELY EVERY 1 LINEAR FOOT ON BOTH SIDES OF WATTLE AND AT EACH END TO SECURE IT TO THE SOIL.

WATTLE INSTALLATION CAN BE ON OUTSIDE OF THE SILT FENCE AS DIRECTED.

INSTALL TEMPORARY SILT FENCE IN ACCORDANCE WITH SECTION 1605 OF THE STANDARD SPECIFICATIONS.

INSET A



SIDE VIEW

NOT TO SCALE

DIVISION OF HIGHWAYS
STATE OF NORTH CAROLINA

SOIL STABILIZATION TIMEFRAMES

<i>SITE DESCRIPTION</i>	<i>STABILIZATION TIME</i>	<i>TIMEFRAME EXCEPTIONS</i>
PERIMETER DIKES, SWALES, DITCHES AND SLOPES	7 DAYS	NONE
HIGH QUALITY WATER (HQW) ZONES	7 DAYS	NONE
SLOPES STEEPER THAN 3:1	7 DAYS	IF SLOPES ARE 10' OR LESS IN LENGTH AND ARE NOT STEEPER THAN 2:1, 14 DAYS ARE ALLOWED.
SLOPES 3:1 OR FLATTER	14 DAYS	7 DAYS FOR SLOPES GREATER THAN 50' IN LENGTH.
ALL OTHER AREAS WITH SLOPES FLATTER THAN 4:1	14 DAYS	NONE, EXCEPT FOR PERIMETERS AND HQW ZONES.

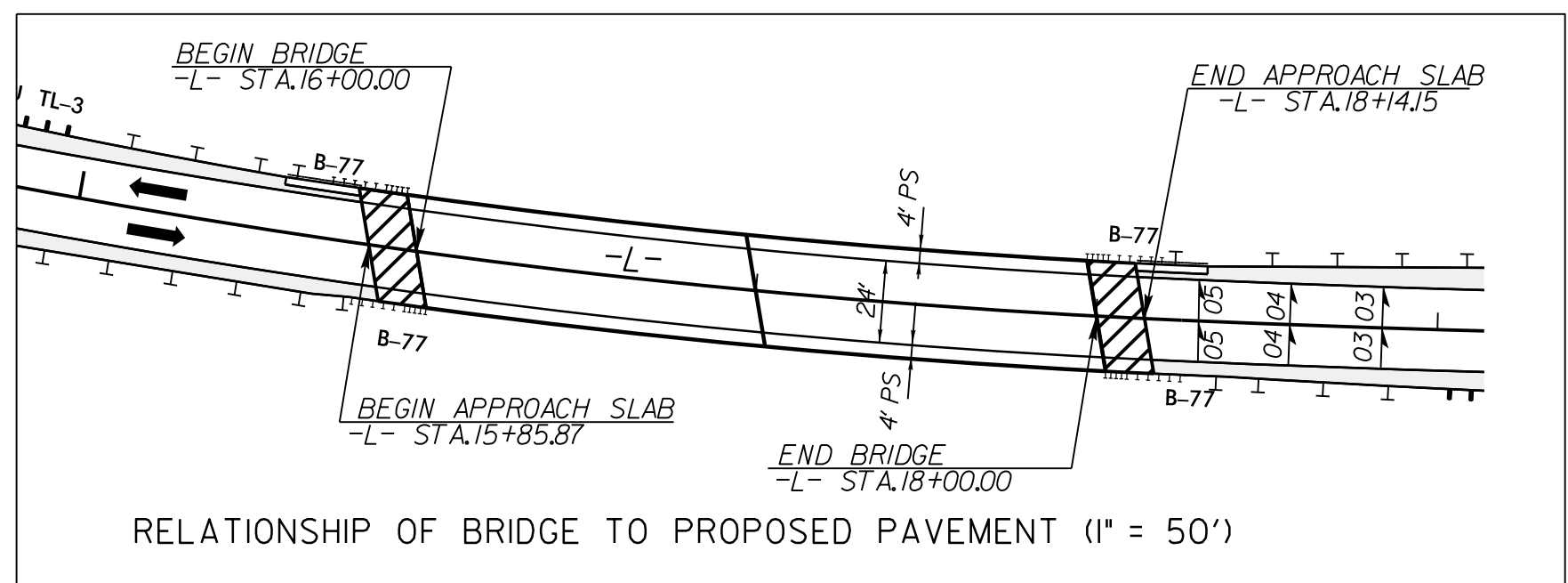
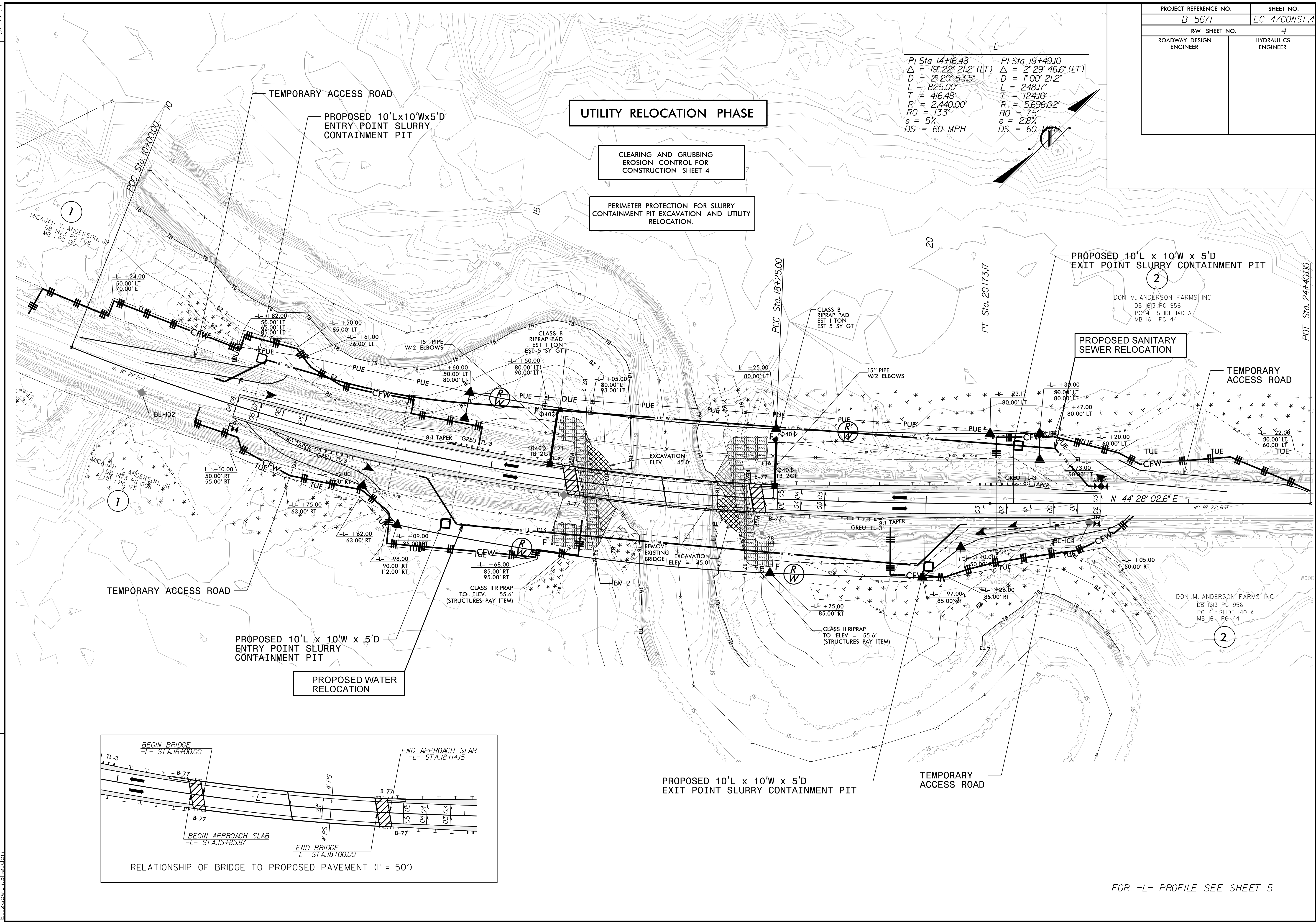
PROJECT REFERENCE NO.	SHEET NO.
B-5671	EC-4/CONST.4
RW SHEET NO.	4
ROADWAY DESIGN ENGINEER	HYDRAULICS ENGINEER

PI Sta 14+16.48 PI Sta 19+49.10
 $\Delta = 19' 22" 21.2" (LT)$ $\Delta = 2' 29' 46.6" (LT)$
 $D = 2' 20' 53.5"$ $D = 1' 00' 21.2"$
 $L = 825.00'$ $L = 248.17'$
 $T = 416.48'$ $T = 124.10'$
 $R = 2,440.00'$ $R = 5,696.02'$
 $RO = 133'$ $RO = 75'$
 $e = 5\%$ $e = 2.8\%$
 $DS = 60 MPH$ $DS = 60$

UTILITY RELOCATION PHASE

CLEARING AND GRUBBING
EROSION CONTROL FOR
CONSTRUCTION SHEET 4

PERIMETER PROTECTION FOR SLURRY
CONTAINMENT PIT EXCAVATION AND UTILITY
RELOCATION.



FOR -L- PROFILE SEE SHEET 5

REVISIONS

8/17/99
 2/4/2020
 5/18/1945.24 B-5671\Roadside\CADD\PSH\B-5671_reu_EC04.dgn
 Elizabeth Sheldon

PROJECT REFERENCE NO.	SHEET NO.
B-5671	EC-5/CONST.4
RW SHEET NO.	4
ROADWAY DESIGN ENGINEER	HYDRAULICS ENGINEER

 ENVIRONMENTALLY SENSITIVE AREA
SEE PROJECT SPECIAL PROVISIONS

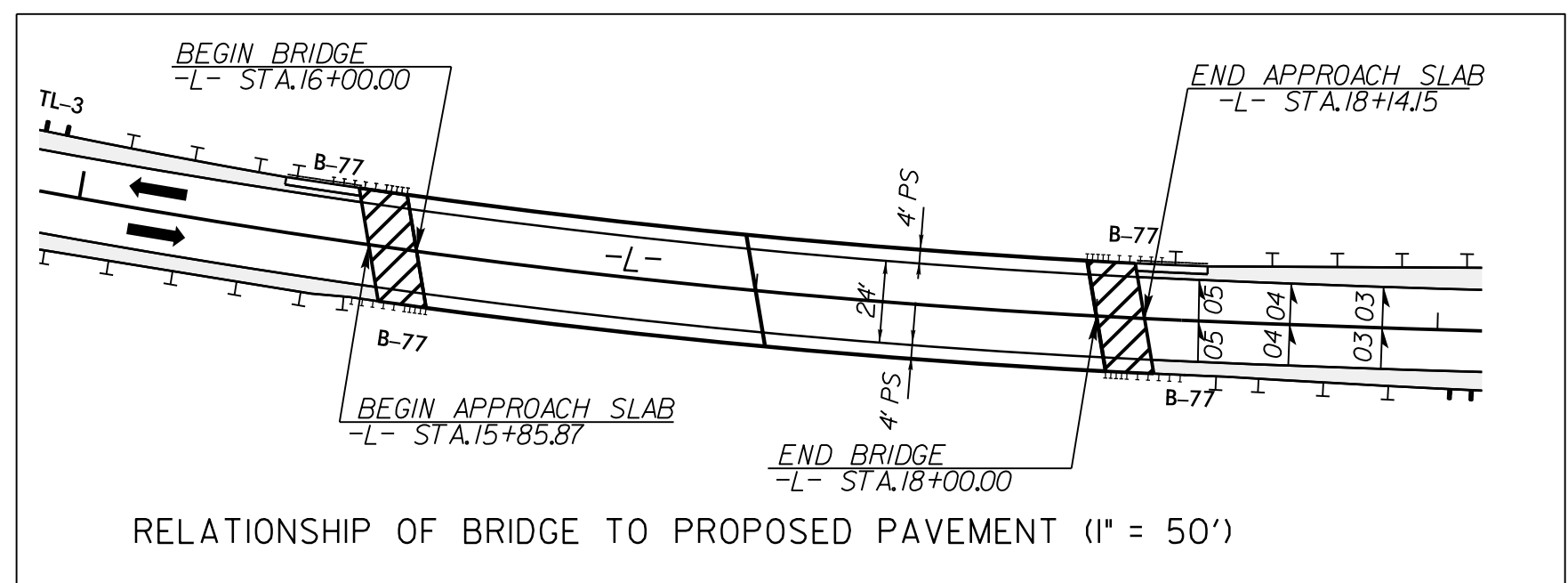
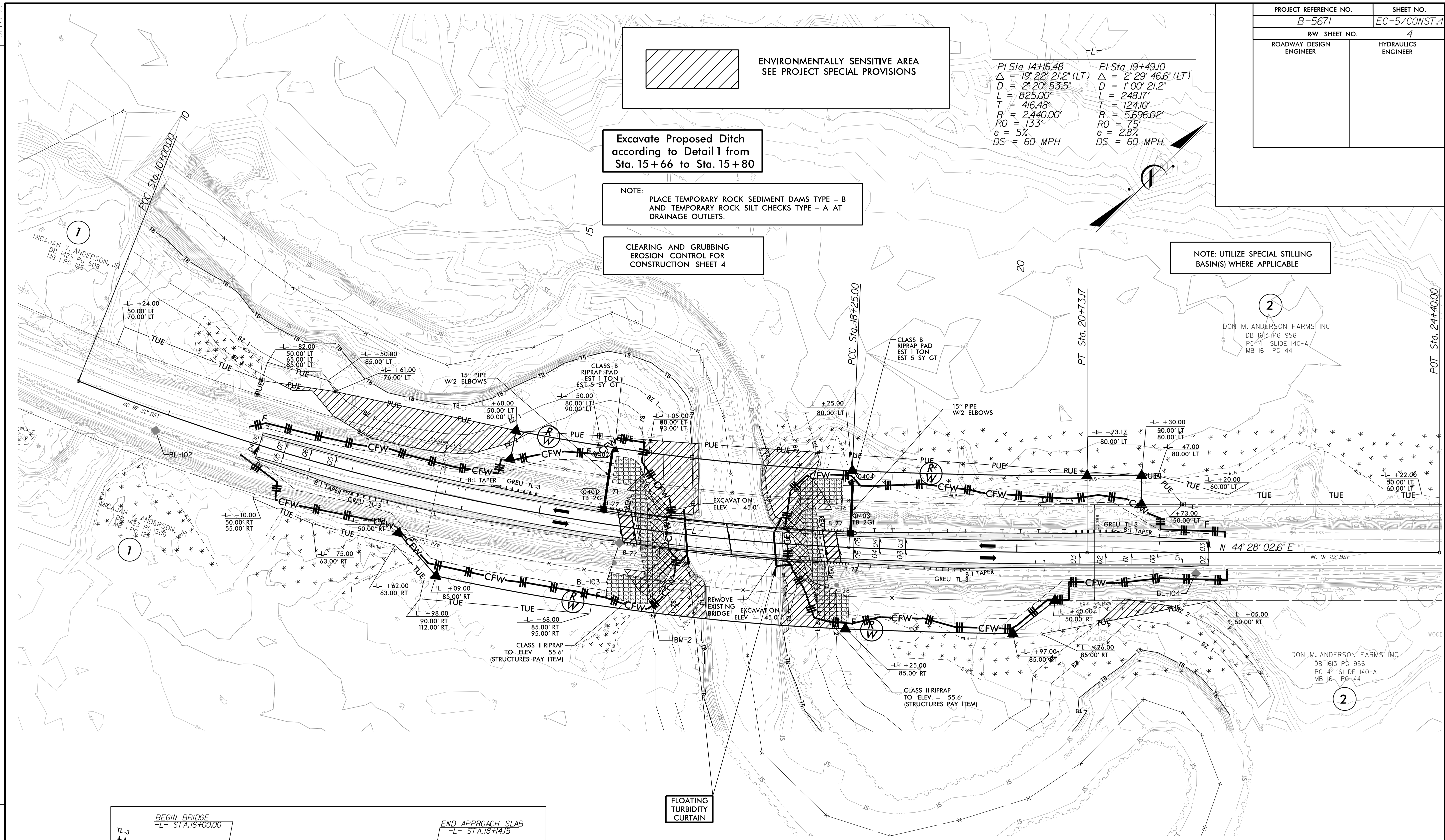
PI Sta 14+16.48 PI Sta 19+49.10
 $\Delta = 19' 22" 21.2" (LT)$ $\Delta = 2' 29" 46.6" (LT)$
 $D = 2' 20" 53.5"$ $D = 1' 00" 21.2"$
 $L = 825.00'$ $L = 248.17'$
 $T = 416.48'$ $T = 124.10'$
 $R = 2,440.00'$ $R = 5,696.02'$
 $RO = 133'$ $RO = 75'$
 $e = 5\%$ $e = 2.8\%$
 $DS = 60 MPH$ $DS = 60 MPH$

Excavate Proposed Ditch according to Detail 1 from Sta. 15+66 to Sta. 15+80

NOTE: PLACE TEMPORARY ROCK SEDIMENT DAMS TYPE - B AND TEMPORARY ROCK SILT CHECKS TYPE - A AT DRAINAGE OUTLETS.

CLEARING AND GRUBBING EROSION CONTROL FOR CONSTRUCTION SHEET 4

NOTE: UTILIZE SPECIAL STILLING BASIN(S) WHERE APPLICABLE



FOR -L- PROFILE SEE SHEET 5

REVISIONS

8/17/99
 2/4/2020
 Elizabeth Sheldon
 51801945.24 B-5671\Roadside\CADD\PSH\B-5671_reu.EC05.dgn

PROJECT REFERENCE NO.	SHEET NO.
B-5671	EC-6/CONST.4
RW SHEET NO.	4
ROADWAY DESIGN ENGINEER	HYDRAULICS ENGINEER

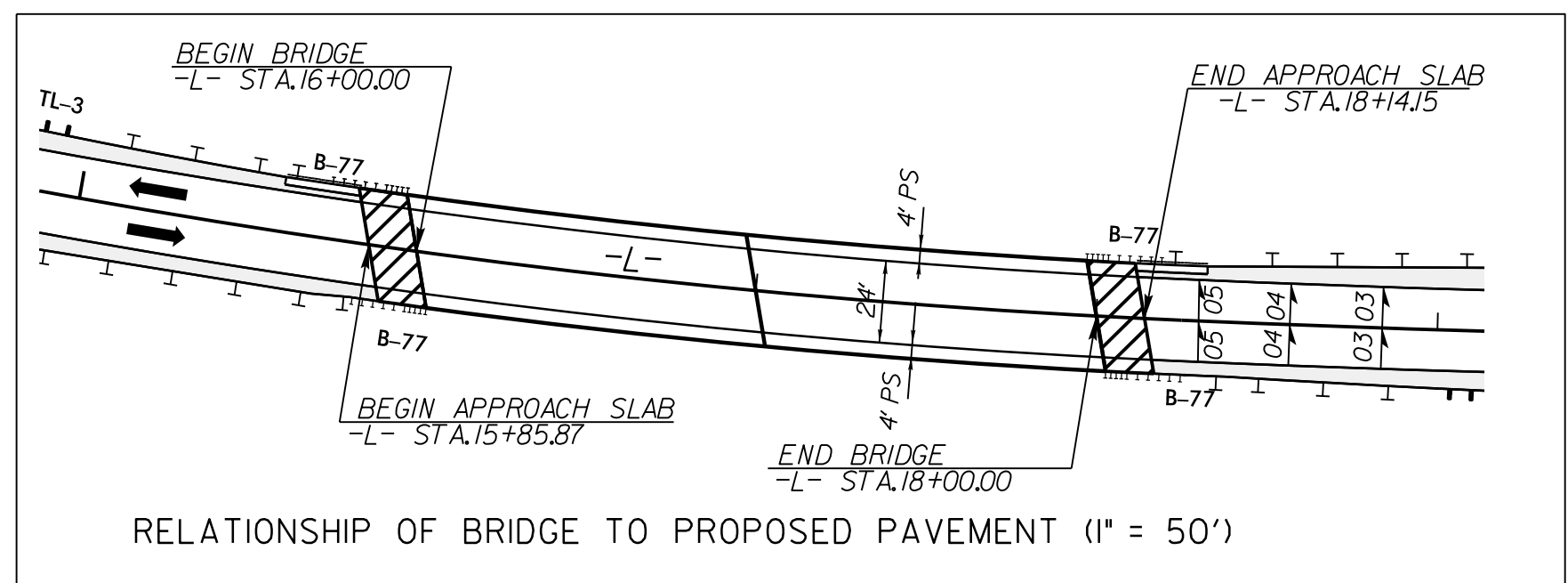
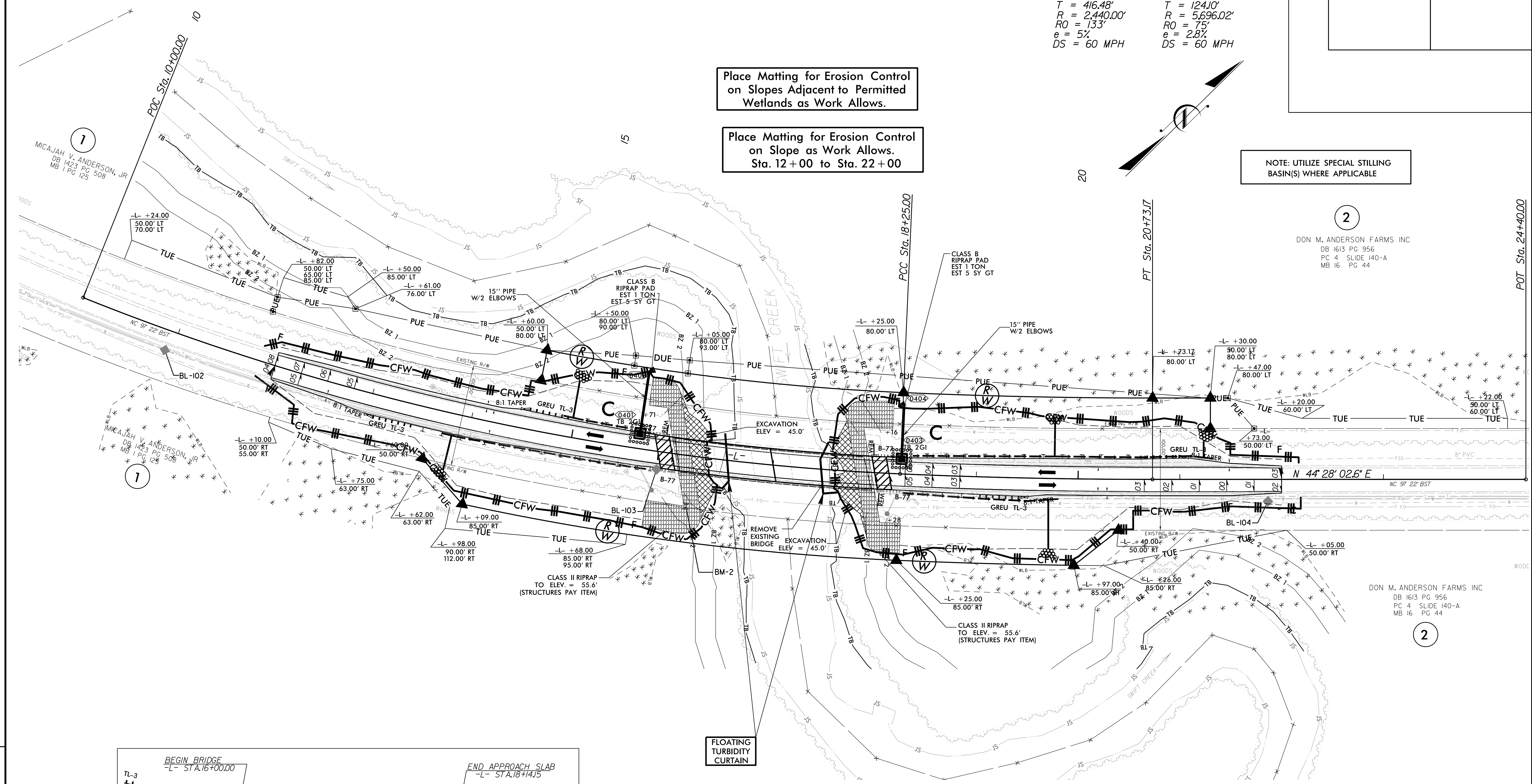
-L-

PI Sta 14+16.48	PI Sta 19+49.10
$\Delta = 19' 22" 21.2" (LT)$	$\Delta = 2' 29' 46.6" (LT)$
$D = 2' 20' 53.5"$	$D = 1' 00' 21.2"$
$L = 825.00'$	$L = 248.17'$
$T = 416.48'$	$T = 124.10'$
$R = 2,440.00'$	$R = 5,696.02'$
$RO = 133'$	$RO = 75'$
$e = 5\%$	$e = 2.8\%$
$DS = 60 MPH$	$DS = 60 MPH$

Place Matting for Erosion Control on Slopes Adjacent to Permitted Wetlands as Work Allows.

Place Matting for Erosion Control on Slope as Work Allows. Sta. 12+00 to Sta. 22+00

NOTE: UTILIZE SPECIAL STILLING BASIN(S) WHERE APPLICABLE



RELATIONSHIP OF BRIDGE TO PROPOSED PAVEMENT (1" = 50')

FOR -L- PROFILE SEE SHEET 5

REVISIONS

8/17/99

R:\1\2020\51801945.24 B-5671\Roadside\CADD\PSH\B-5671_reu_EC06.dgn
Elizabeth Sheldon