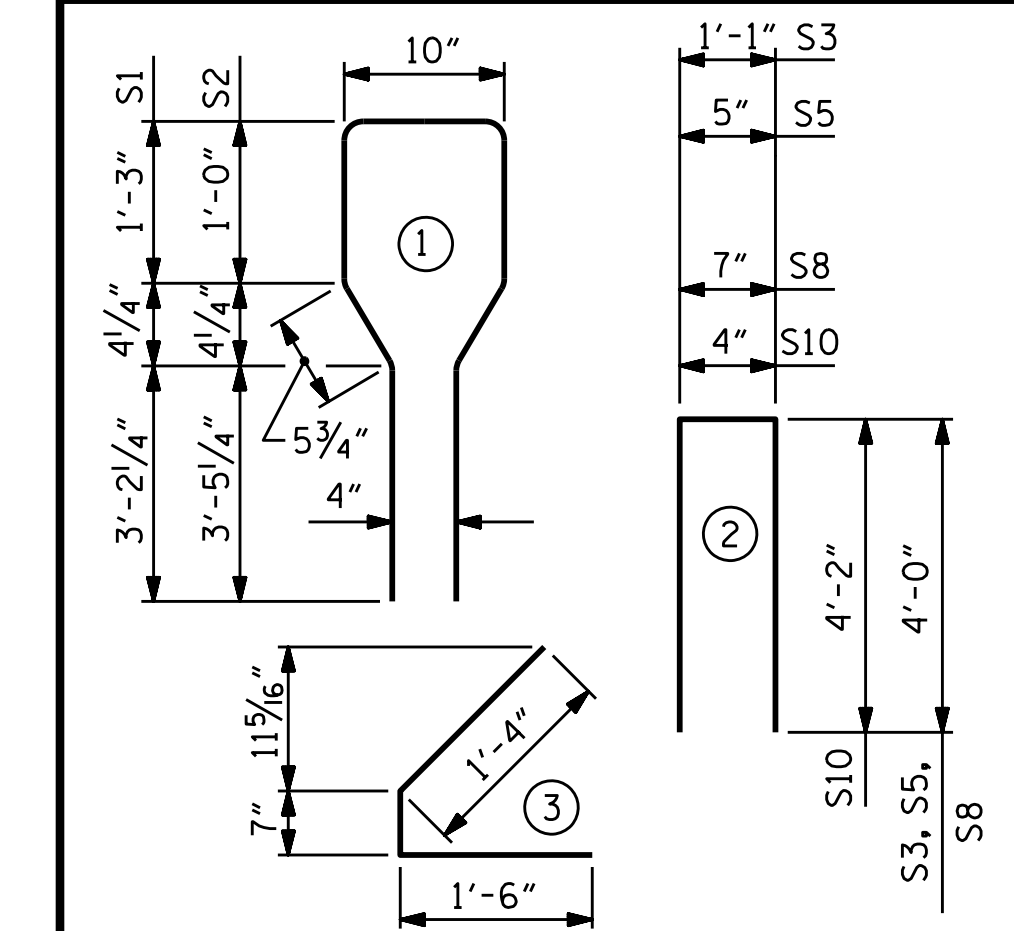


0.6" Ø L. R. GRADE 270 STRANDS		
AREA (SQUARE INCHES)	ULTIMATE STRENGTH (LBS. PER STRAND)	APPLIED PRESTRESS (LBS. PER STRAND)
0.217	58,600	43,950

REINFORCING STEEL FOR ONE GIRDER						
BAR	NUMBER	SIZE	TYPE	LENGTH	WEIGHT	
S1	72	#4	1	10'-8"	513	
S2	12	#6	1	10'-8"	192	
S3	4	#4	2	9'-1"	24	
S4	68	#4	3	3'-5"	155	
S5	6	#4	2	8'-5"	34	
*S7	18	#5	STR	3'-8"	69	
S8	4	#4	2	8'-7"	23	
S9	2	#3	STR	1'-10"	1	
S10	2	#5	2	8'-8"	18	
S11	5	#4	STR	7'-0"	23	
S13	1	#3	STR	1'-4"	1	

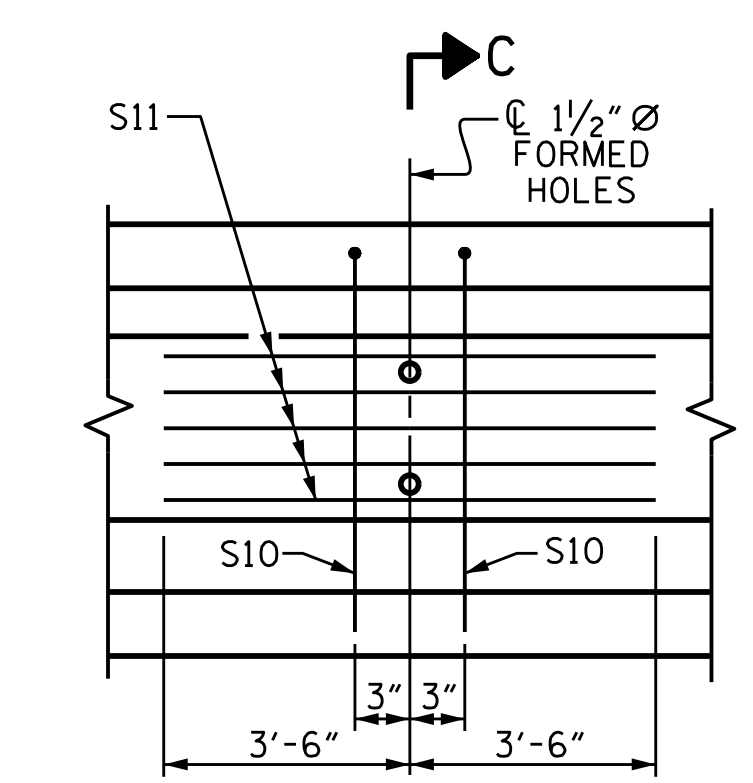
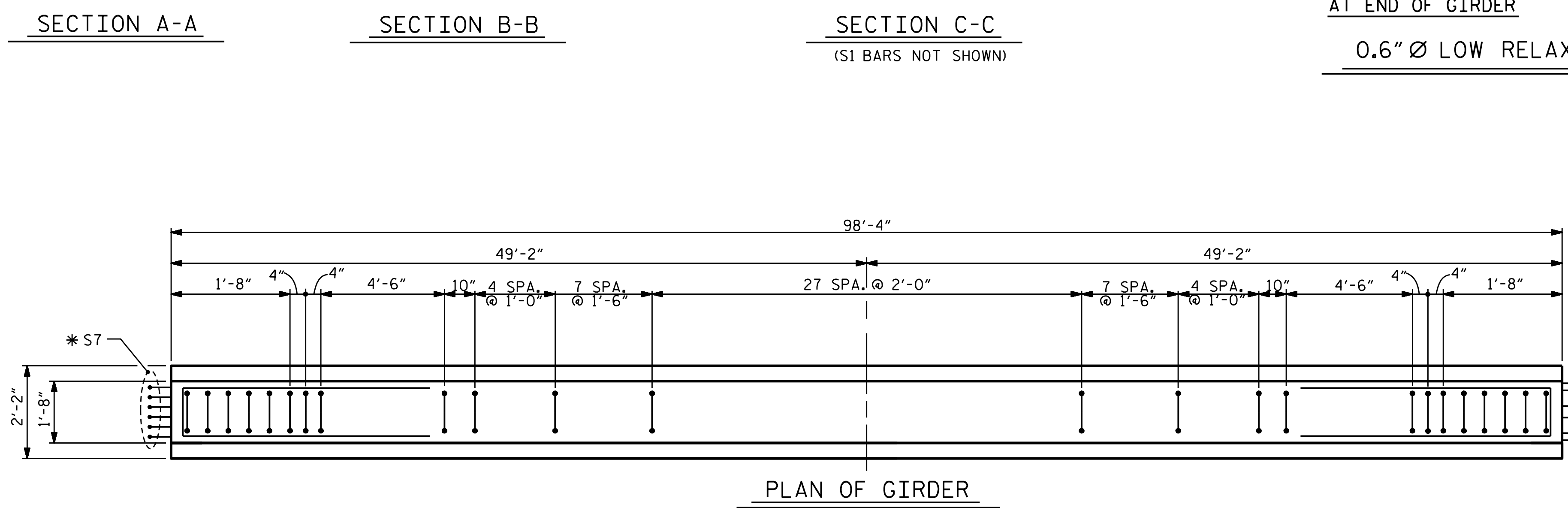
* NOTE: S7 BARS SHALL BE BENT BEFORE SHIPMENT. HEAT BENDING SHALL NOT BE ALLOWED.

BAR TYPES
ALL BAR DIMENSIONS ARE OUT-TO-OUT



⊙ BOND SHALL BE BROKEN ON THESE STRANDS FOR A DISTANCE OF 4'-0" FROM END OF GIRDER.
 △ BOND SHALL BE BROKEN ON THESE STRANDS FOR A DISTANCE OF 6'-0" FROM END OF GIRDER.
 SEE STANDARD SPECIFICATIONS, ARTICLE 1078-7.

DEBONDING LEGEND



PARTIAL ELEVATION
SHOWING INTERMEDIATE DIAPHRAGM REINFORCING STEEL FOR ALL GIRDERS

QUANTITIES FOR ONE GIRDER			
REINFORCING STEEL	8000 PSI CONCRETE	0.6" Ø L. R. STRANDS	
LB.	C.Y.	No.	
1053	20.0	40	

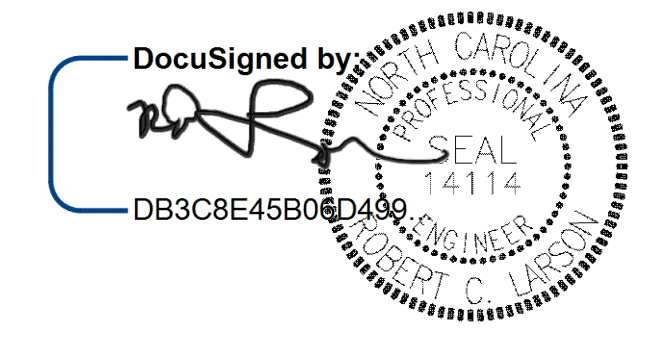
GIRDERS REQUIRED		
NUMBER	LENGTH	TOTAL LENGTH
8	98'-4"	786'-8"

PROJECT NO. B-5671
 EDGECOMBE COUNTY
 STATION: 17+00.00 -L-

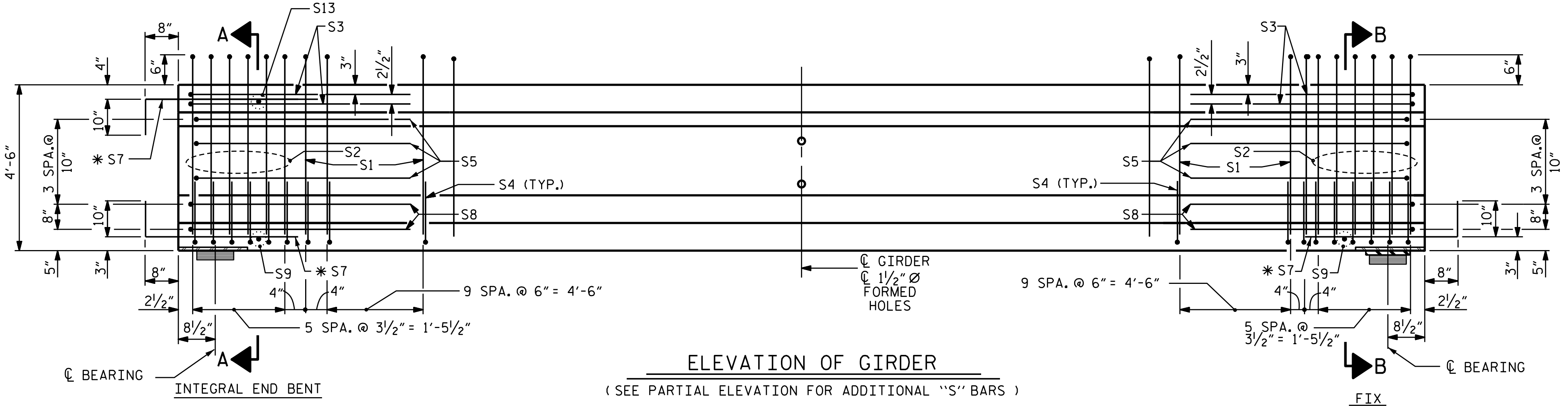
SHEET 1 OF 2

STATE OF NORTH CAROLINA
 DEPARTMENT OF TRANSPORTATION
 RALEIGH

STANDARD
 AASHTO TYPE IV
 PRESTRESSED CONCRETE GIRDER
 CONTINUOUS FOR LIVE LOAD



REVISIONS						SHEET NO.
NO.	BY:	DATE:	NO.	BY:	DATE:	S-11
1			3			TOTAL SHEETS
2			4			29



ELEVATION OF GIRDER
(SEE PARTIAL ELEVATION FOR ADDITIONAL "S" BARS)

KCI JOB NO: 251801945.24

DESIGN ENGINEER OF RECORD	DATE: 1/24/2020
ASSEMBLED BY: Z. KADI	DATE: 06/03/19
CHECKED BY: R. C. LARSON	DATE: 11/07/19
DRAWN BY: ELR 8/91	MAA/GM
CHECKED BY: GRP 8/91	REV. 1/15 MAA/TMG
	REV. 12/17 MAA/THC

**DOCUMENT NOT CONSIDERED FINAL
UNLESS ALL SIGNATURES COMPLETED**

ENGINEERS PLANNERS SCIENTISTS CONSTRUCTION MANAGERS LICENSE NUMBER: C-074
KCI Associates
 of North Carolina, P.A.
 4505 Falls of Neuse Road, Suite 400, Raleigh, NC 27609-5270 Phone 919-783-8241

STD. NO. PCG6