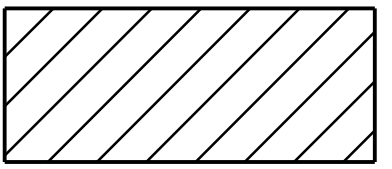


PROJECT REFERENCE NO.	SHEET NO.
B-5671	EC-5/CONST.4
RW SHEET NO.	4
ROADWAY DESIGN ENGINEER	HYDRAULICS ENGINEER



ENVIRONMENTALLY SENSITIVE AREA
SEE PROJECT SPECIAL PROVISIONS

$PI\ Sta\ 14+16.48$
 $\Delta = 19^\circ 22' 21.2" (LT)$
 $D = 2^\circ 20' 53.5"$
 $L = 825.00'$
 $T = 416.48'$
 $R = 2,440.00'$
 $RO = 133'$
 $e = 5\%$
 $DS = 60\ MPH$

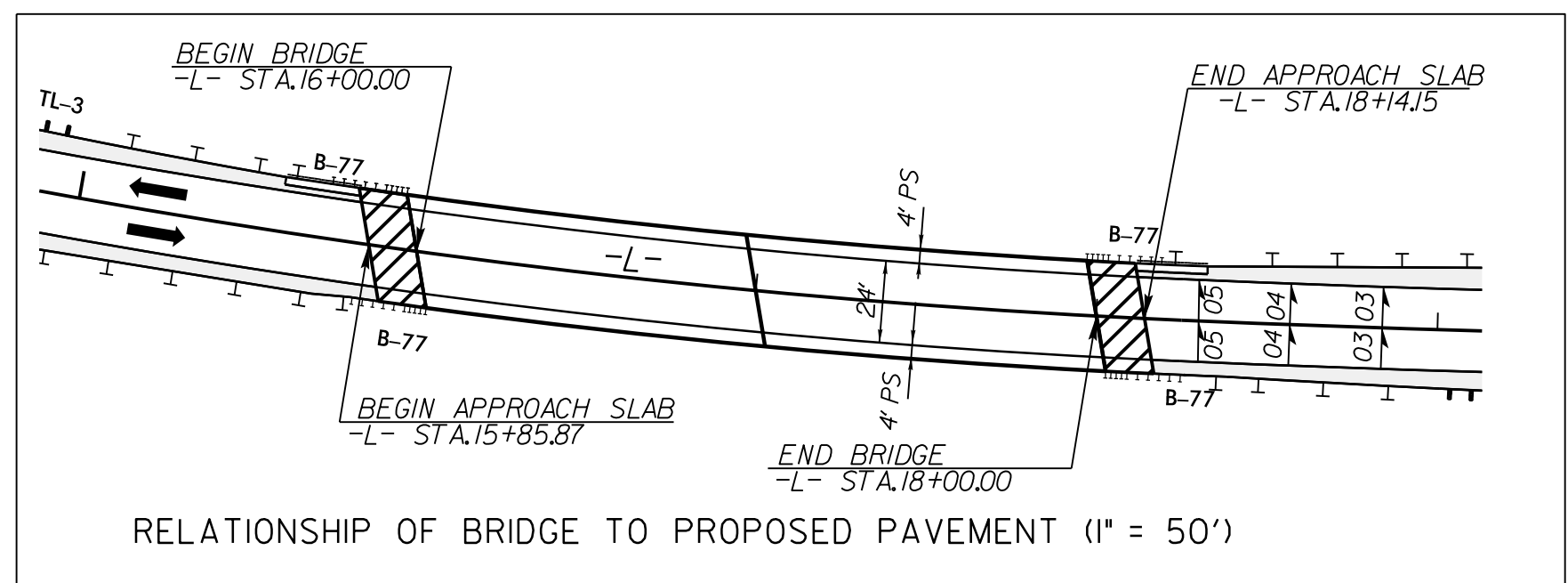
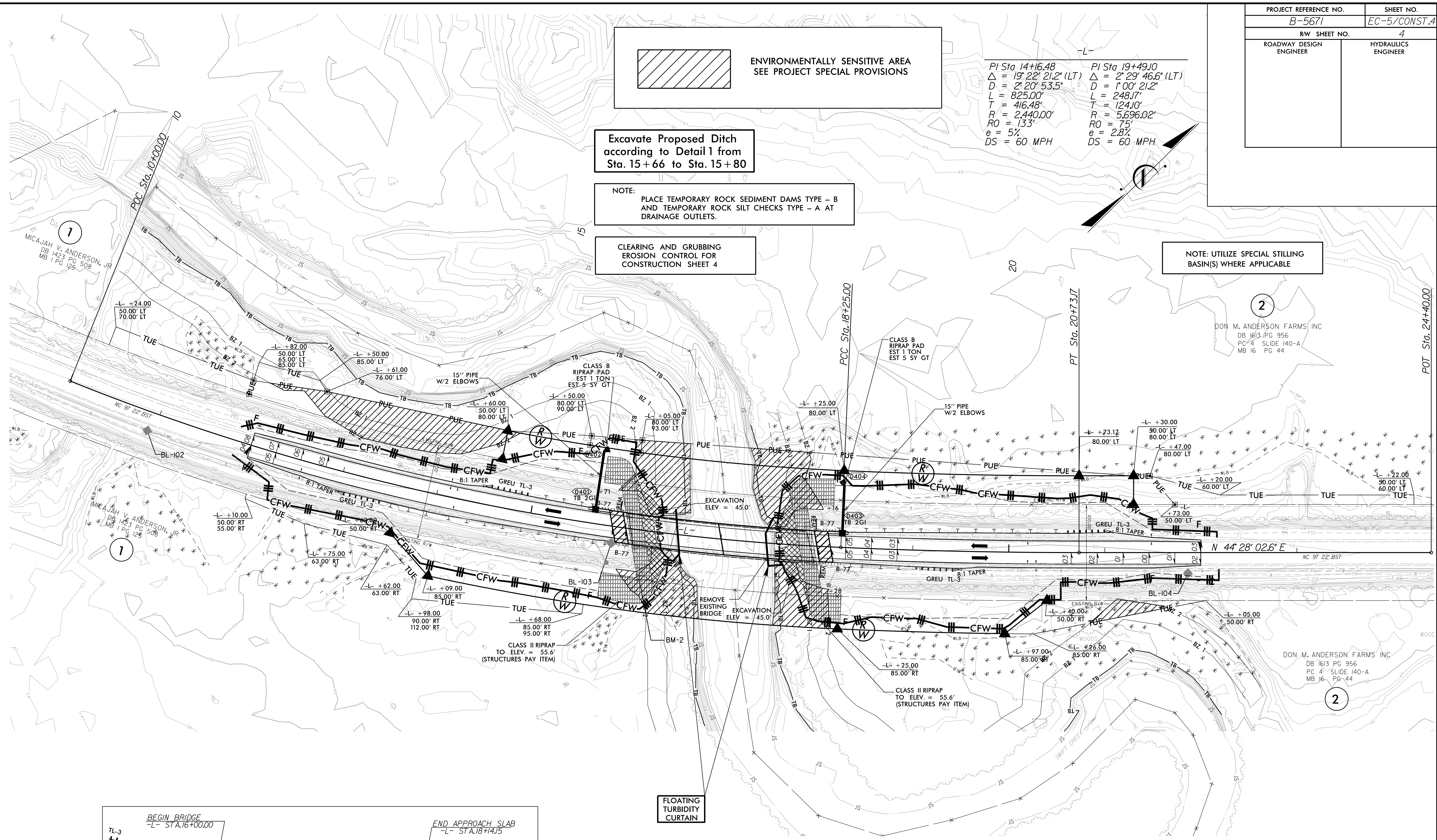
$PI\ Sta\ 19+49.10$
 $\Delta = 2^\circ 29' 46.6" (LT)$
 $D = 1^\circ 00' 21.2"$
 $L = 248.17'$
 $T = 124.10'$
 $R = 5,696.02'$
 $RO = 75'$
 $e = 2.8\%$
 $DS = 60\ MPH$

Excavate Proposed Ditch according to Detail 1 from Sta. 15+66 to Sta. 15+80

NOTE: PLACE TEMPORARY ROCK SEDIMENT DAMS TYPE - B AND TEMPORARY ROCK SILT CHECKS TYPE - A AT DRAINAGE OUTLETS.

CLEARING AND GRUBBING EROSION CONTROL FOR CONSTRUCTION SHEET 4

NOTE: UTILIZE SPECIAL STILLING BASIN(S) WHERE APPLICABLE



FOR -L- PROFILE SEE SHEET 5

REVISIONS

8/17/99
 2/4/2020
 Elizabeth Sheldon
 B-5671-5671-1-reu-EC05.dgn
 5/18/1945.24 B-5671-Roadside-CADD-PSH-B-5671-reu-EC05.dgn