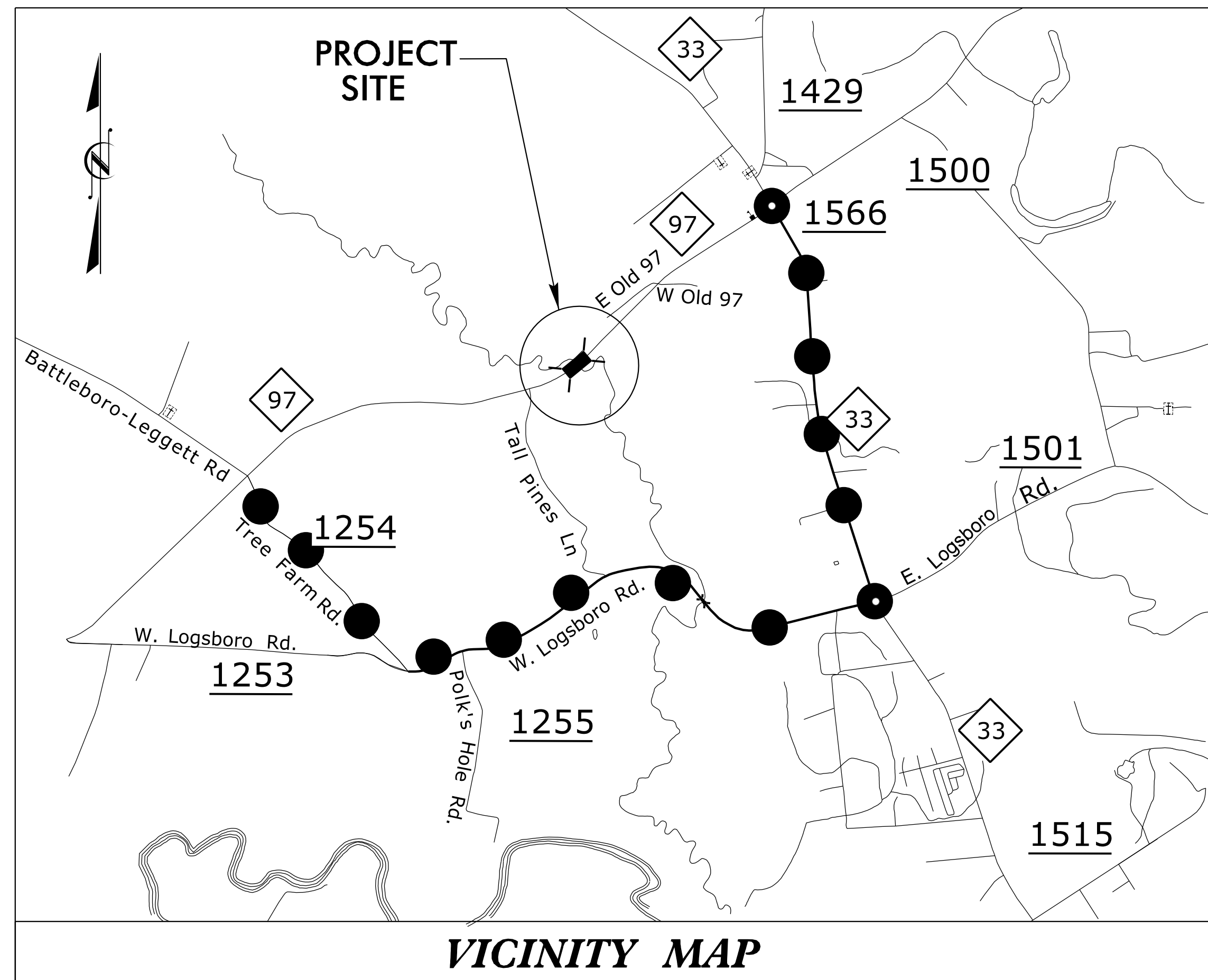
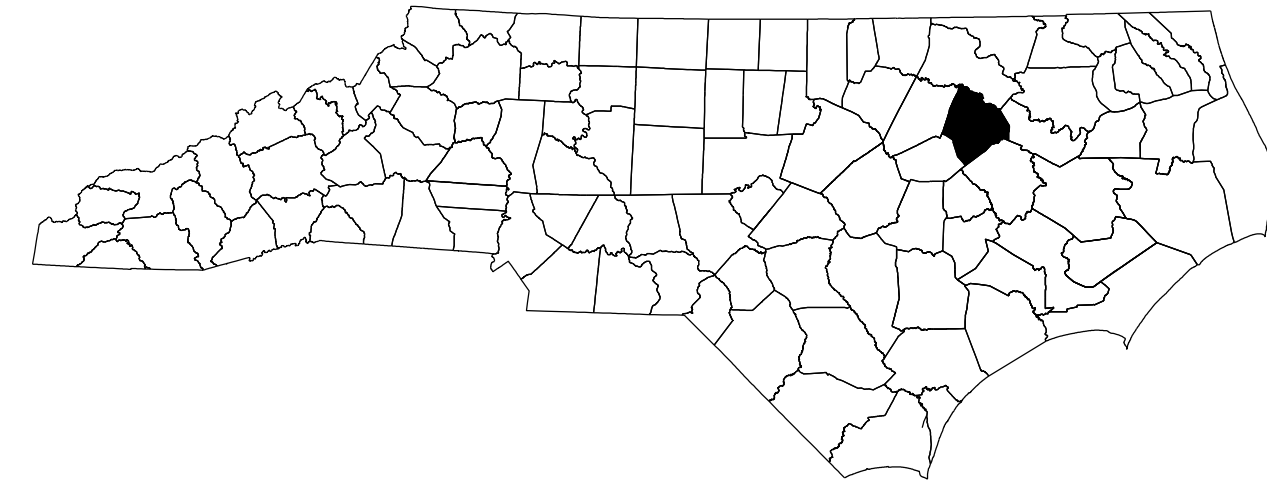


STATE OF NORTH CAROLINA
DIVISION OF HIGHWAYS

TRANSPORTATION MANAGEMENT PLAN

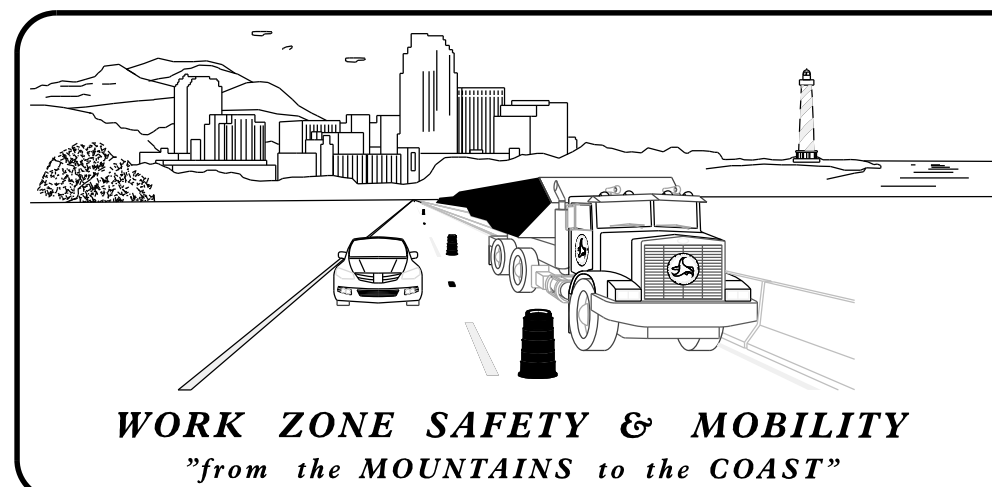
EDGECOMBE COUNTY



**LOCATION: BRIDGE NO. 87 OVER
SWIFT CREEK ON NC 97**

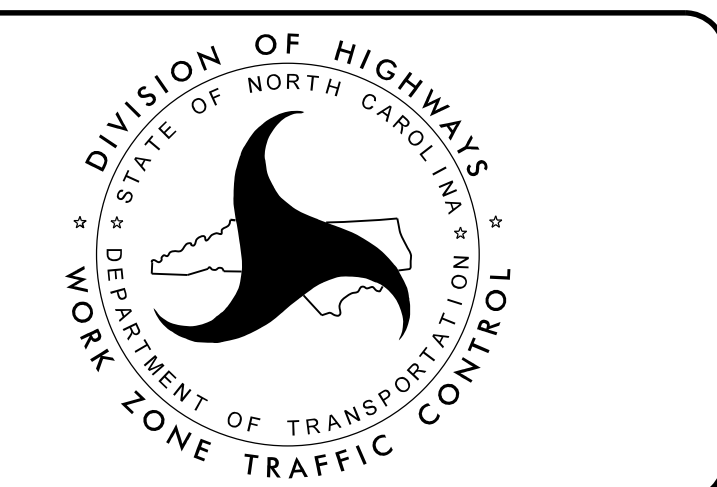
TYPE OF WORK: GRADING, DRAINAGE, PAVING, AND STRUCTURE

●—●—● OFFSITE DETOUR ROUTE



N.C.D.O.T. WORK ZONE TRAFFIC CONTROL
1561 MAIL SERVICE CENTER (MSC) RALEIGH, NC 27699-1561
750 N. GREENFIELD PARKWAY, GARNER, NC 27529 (DELIVERY)
PHONE: (919) 773-2800 FAX: (919) 771-2745

J.E. HUMMER, PHD, PE STATE TRAFFIC MANAGEMENT ENGINEER
STEVE KITE, P.E. TRAFFIC CONTROL PROJECT ENGINEER
SPENCER JENNINGS TRAFFIC CONTROL PROJECT DESIGN ENGINEER
WILLIAM DEBREW TRAFFIC CONTROL DESIGN ENGINEER



KCI
ASSOCIATES OF N.C.

CIVIL ENGINEERS
ENVIRONMENTAL - CEI
LAND SURVEYING
SUBSURFACE UTILITY
ENGINEERING

4505 FALLS OF NEUSE ROAD
SUITE 400
RALEIGH, NORTH CAROLINA 27609
(919) 783-9214
WWW.KCI.COM

APPROVED: _____
DATE: 2/4/2020

SEAL

INDEX OF SHEETS

SHEET NO.	TITLE
TMP-1	TITLE SHEET, VICINITY MAP, AND INDEX OF SHEETS
TMP-1A	LIST OF APPLICABLE ROADWAY STANDARD DRAWINGS AND LEGEND
TMP-1B	TRANSPORTATION OPERATIONS PLAN: (MANAGEMENT STRATEGIES, GENERAL NOTES, LOCAL NOTES, AND TEMPORARY TRAFFIC CONTROL PHASING)
TMP-2	NO SHEET
TMP-3	OFFSITE DETOUR

SHEET NO.
TMP-1

TIP PROJECT: B-5671

\$\$\$\$\$SYTIME\$\$\$\$\$
\$\$\$\$\$DNAME\$\$\$\$\$
\$\$\$\$\$USERNAME\$\$\$\$\$