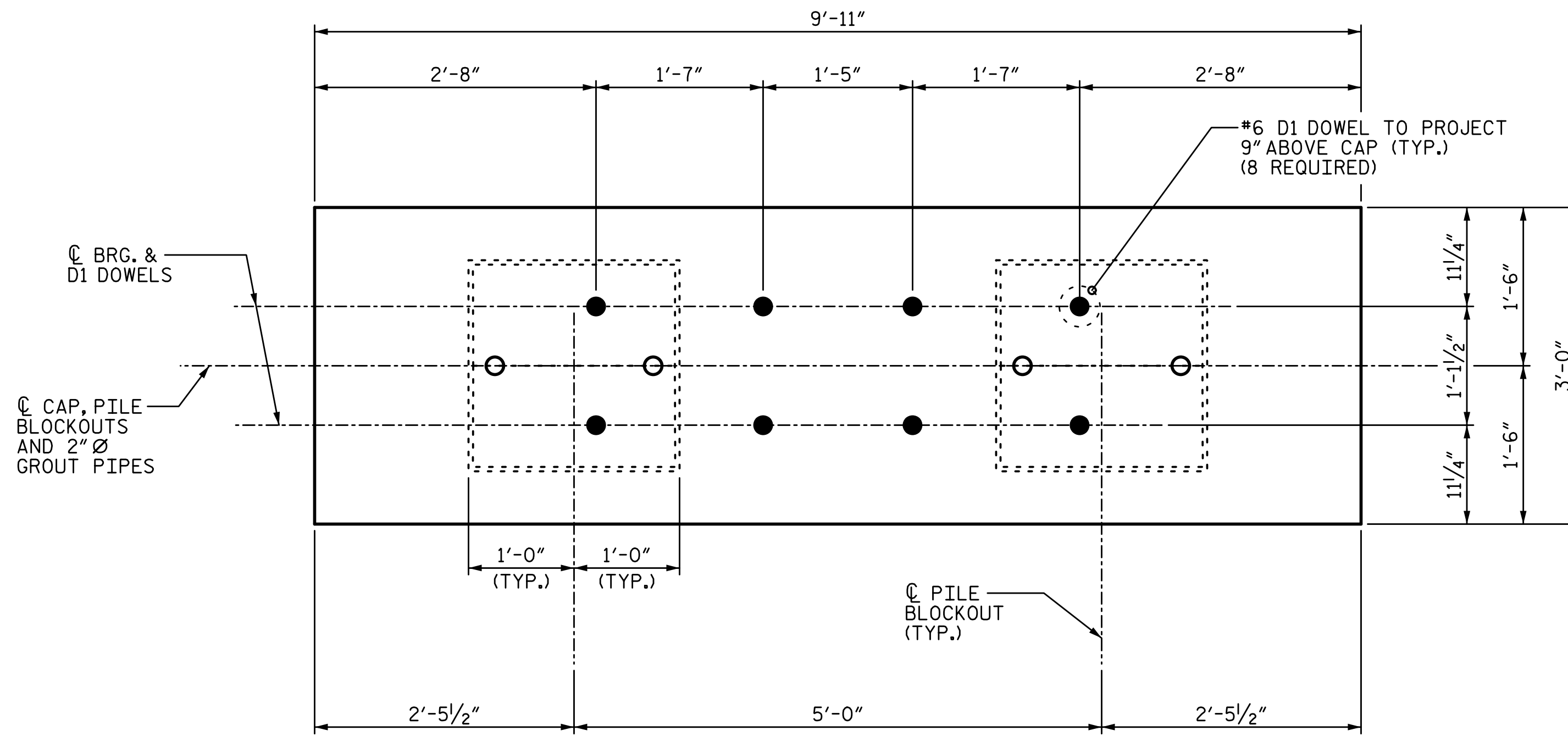
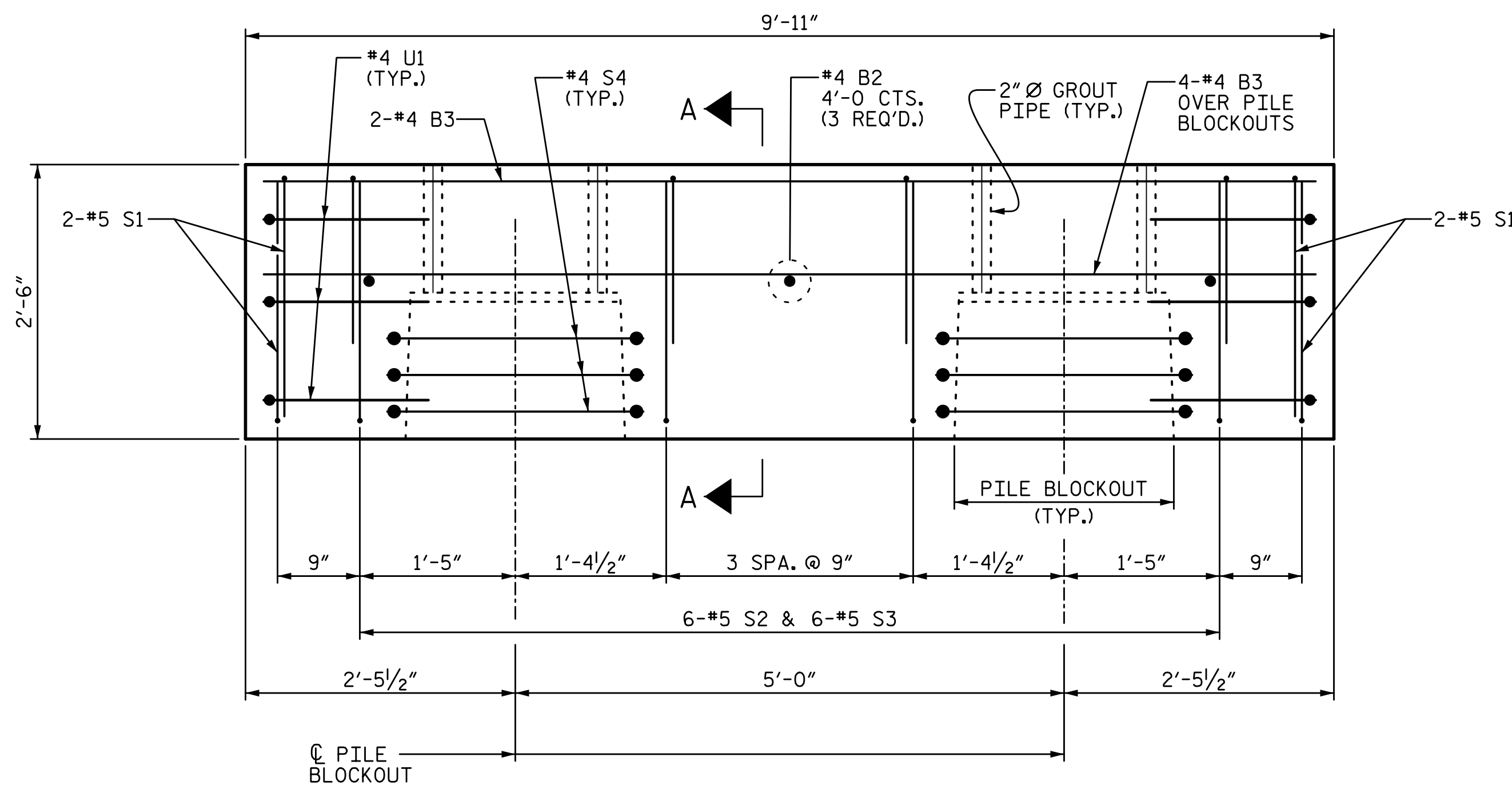


4/7/2020 4:10:51 PM G:\Projects\2018\Division 3 (SEA)\B-5639 (Duplin 36 NC11 over MaxwellCreek)\Structures\Drawings\Final\B5639_SMU_B_300036.dgn



PLAN

(FOR PILE BLOCKOUT DETAILS, SEE SHEET 5 OF 6)



ELEVATION

(*6 D1 DOWELS NOT SHOWN FOR CLARITY)
FOR SECTION A-A, SEE SHEET 5 OF 6.

**BILL OF MATERIAL
FOR ONE PIECE B-02**

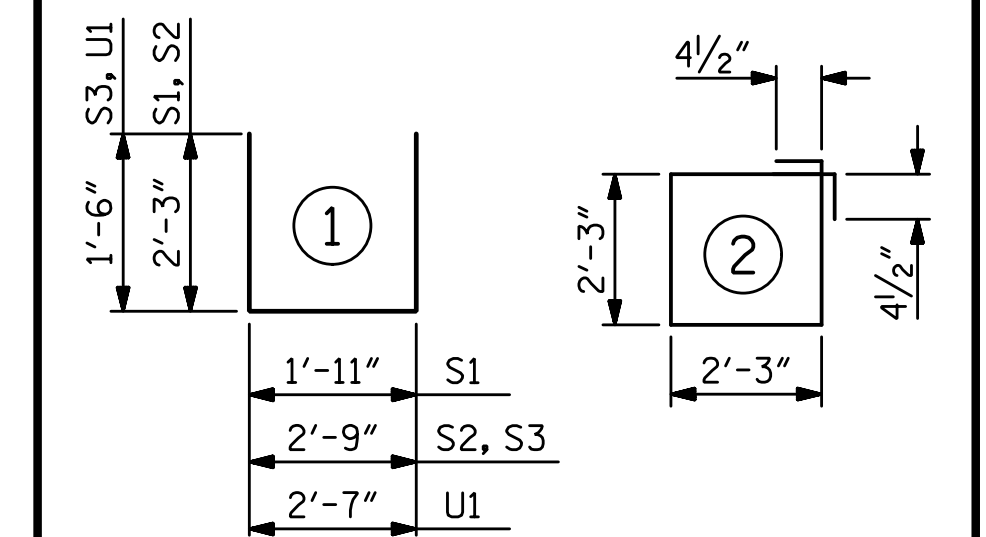
BAR	NO.	SIZE	TYPE	LENGTH	WEIGHT
B2	3	#4	STR	2'-8"	5
B3	6	#4	STR	9'-7"	38
D1	8	#6	STR	1'-6"	18
S1	8	#5	1	6'-5"	54
S2	6	#5	1	7'-3"	45
S3	6	#5	1	5'-9"	36
S4	6	#4	2	9'-9"	39
U1	6	#4	1	5'-7"	22

REINFORCING STEEL 257 LBS

4000 PSI PRESTRESS CONCRETE 2.4 C.Y.
PILE BLOCKOUT GROUT ▲ 0.4 C.Y.

0.6" Ø L.R. STRANDS No. 12

BAR TYPES



ALL BAR DIMENSIONS ARE OUT TO OUT.

▲ GROUT TO FILL TOP 1'-0" OF THE PP 18 X 0.50 GALVANIZED STEEL PILE HAS BEEN INCLUDED IN THE GROUT QUANTITY.

GRADE 270 STRANDS	
AREA (SQUARE INCHES)	0.217
ULTIMATE STRENGTH (LBS. PER STRAND)	58,600
APPLIED PRESTRESS (LBS. PER STRAND)	43,950

PROJECT NO. B-5639
DUPLIN COUNTY
STATION: 23+55.00 -L-

SHEET 4 OF 6

STATE OF NORTH CAROLINA
DEPARTMENT OF TRANSPORTATION
RALEIGH
SUBSTRUCTURE

PRECAST
PIECE B-02

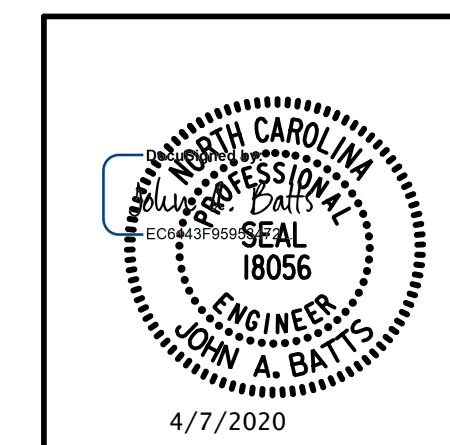
REVISIONS

NO.	BY:	DATE:	NO.	BY:	DATE:
1			3		
2			4		

SHEET NO.
S-20
TOTAL SHEETS
25

PLANS PREPARED BY:

SEA & A
IMPSON ENGINEERS ASSOCIATES
5640 Dillard Drive
Suite 200
Cary, NC 27518
(919) 852-0468
(919) 852-0538 (Fax)
www.slmpsonengr.com
LICENSURE NO. C-2521



**DOCUMENT NOT CONSIDERED FINAL
UNLESS ALL SIGNATURES COMPLETED**

DRAWN BY: T. BANKOVICH	DATE: 2-20
CHECKED BY: J.A. BATTS	DATE: 2-20
DESIGN ENGINEER OF RECORD: J.A. BATTS	DATE: 2-20