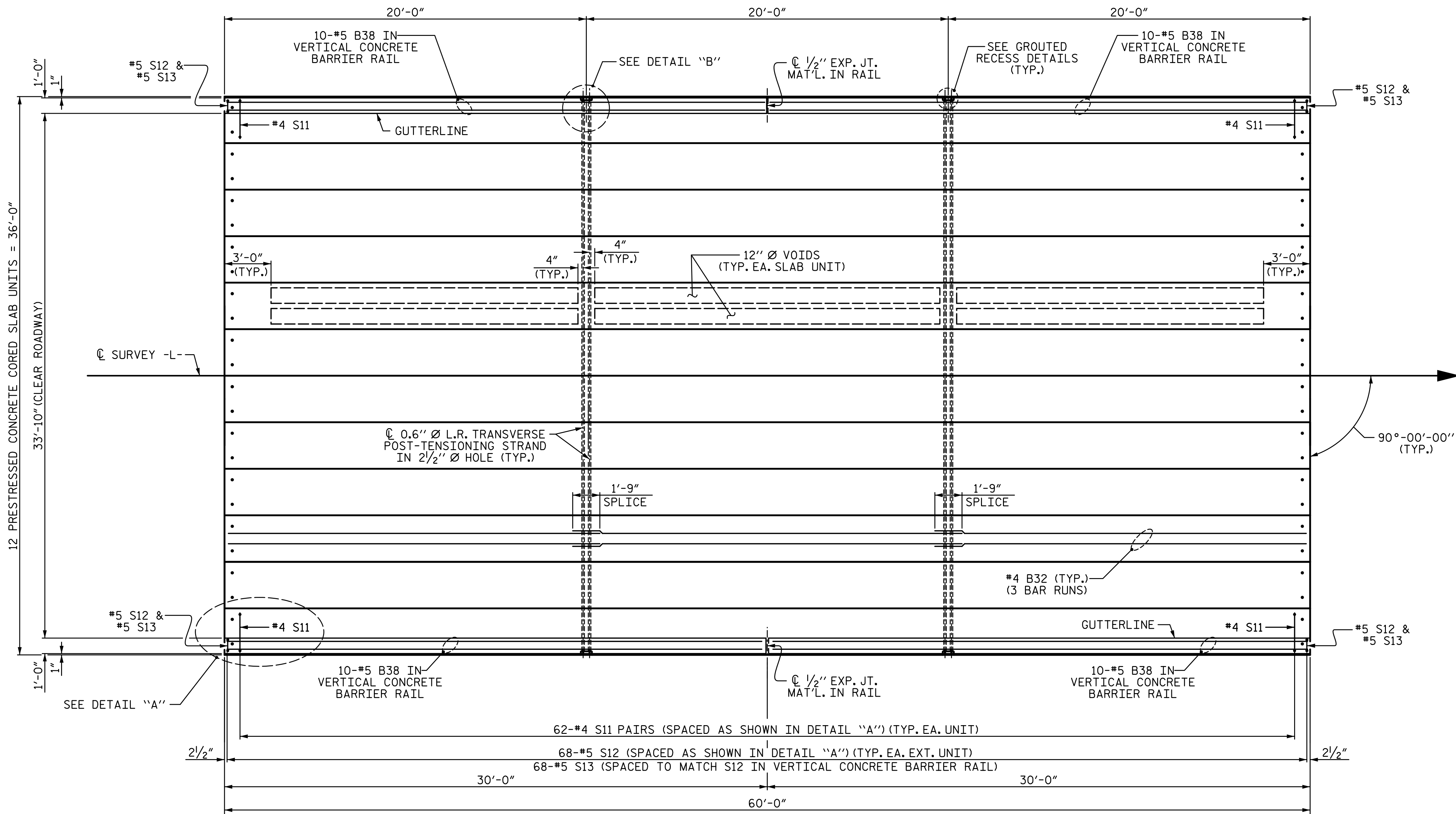
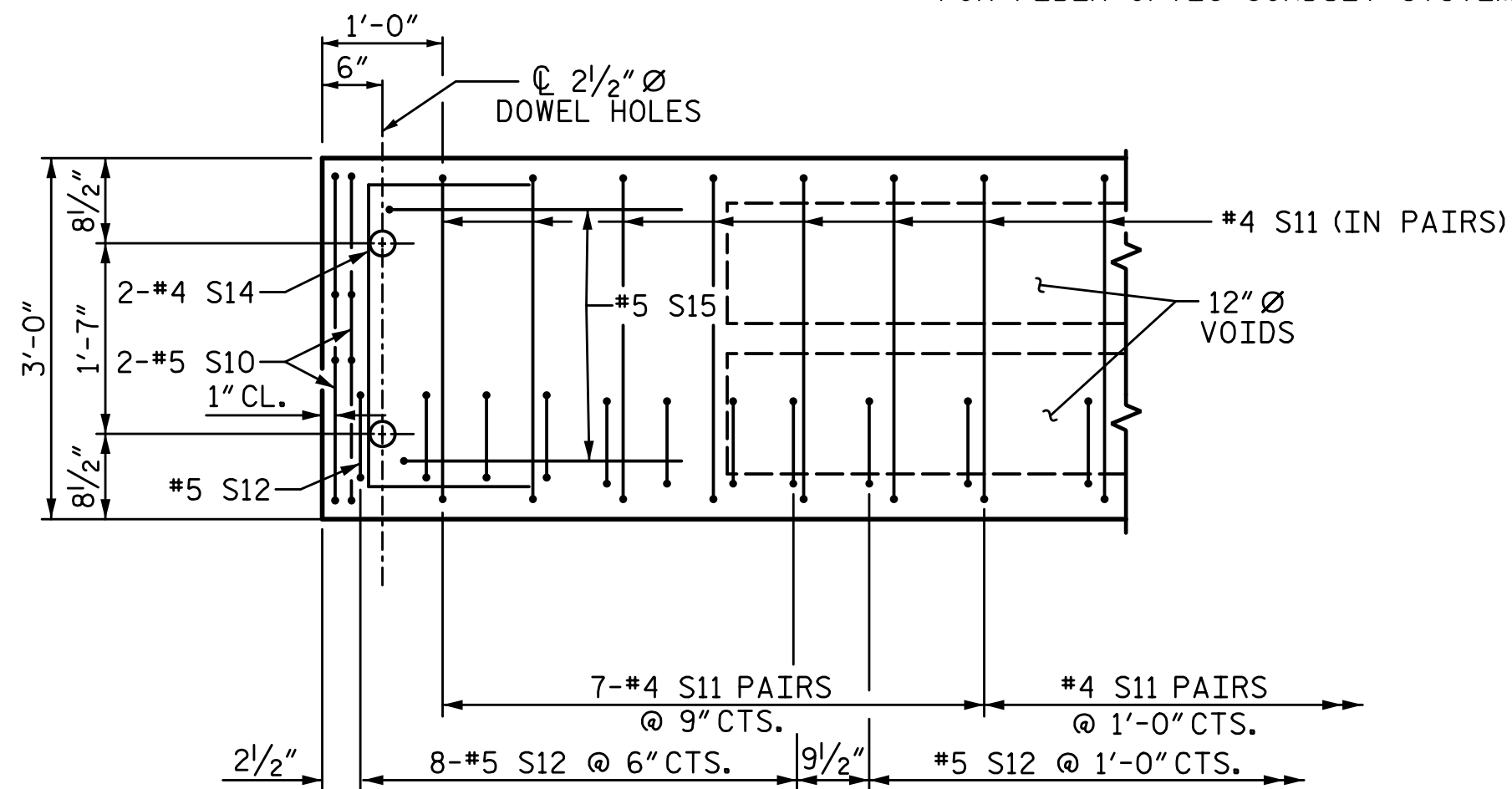


4/7/2020 4:10:48 PM G:\Projects\2018\Division 3 (SEA)\B-5639 (Duplin 36 NC11 over Maxwell Creek)\Structures\Drawings\Final\B5639_SMU_SUPER_300036.dgn

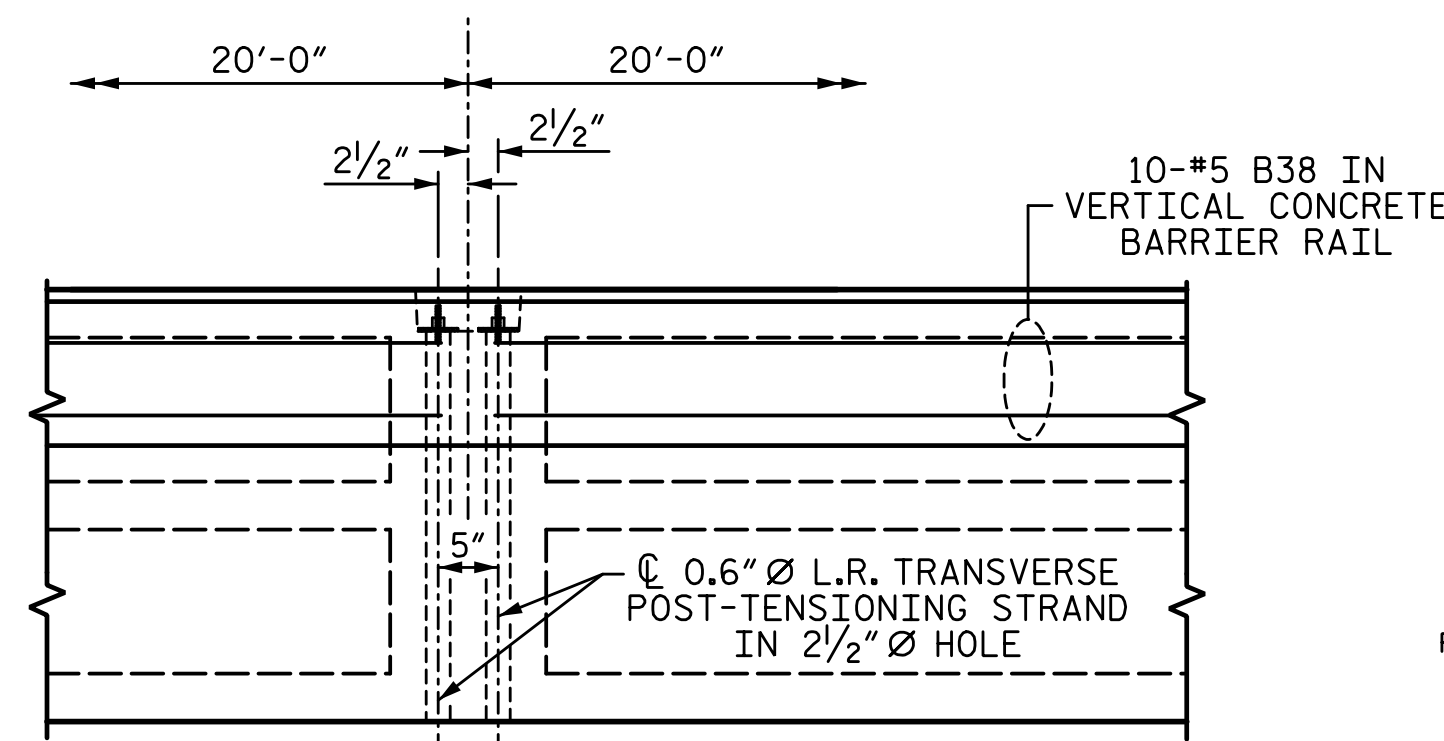


PLAN OF SPAN B
FOR FIBER OPTIC CONDUIT SYSTEM DETAILS, SEE SHEET S-11



DETAIL "A"

(TYPICAL EACH END OF UNIT)
NOTE: EXTERIOR UNIT SHOWN - INTERIOR UNIT SIMILAR EXCEPT OMIT #5 S12 BARS.

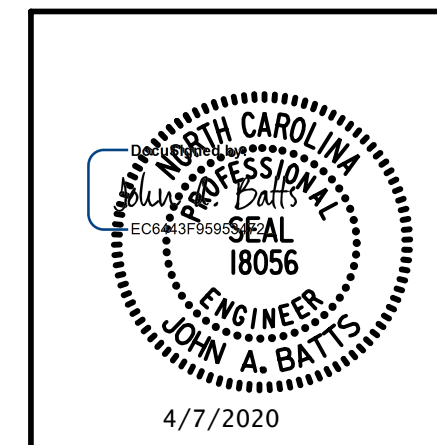


DETAIL "B"

*4 S11 BARS MAY BE SHIFTED AS NECESSARY TO MAINTAIN 1" CLEAR TO GROUDED RECESS AND 2 1/2" Ø TRANSVERSE POST-TENSIONING STRAND HOLES

PLANS PREPARED BY:

SEA
SIMPSON ENGINEERS & ASSOCIATES
5640 Dillard Drive
Suite 200
Cary, NC 27518
(919) 852-0468
(919) 852-0598 (Fax)
www.simpsonengr.com
LICENSURE NO. C-2521



PROJECT NO. B-5639
DUPLIN COUNTY
STATION: 23+55.00 -L-

SHEET 3 OF 5

STATE OF NORTH CAROLINA
DEPARTMENT OF TRANSPORTATION
RALEIGH
SUPERSTRUCTURE
PLAN OF SPAN B
(60'-0" UNIT)
33'-10" CLEAR ROADWAY
90° SKEW

REVISIONS

| NO. | BY: | DATE: | NO. | BY: | DATE: | SHEET NO. |
|-----|-----|-------|-----|-----|-------|-----------------|
| 1 | | | 3 | | | S-9 |
| 2 | | | 4 | | | TOTAL SHEETS 25 |

DRAWN BY: T. BANKOVICH DATE: 2-20
CHECKED BY: J.A. BATTS DATE: 2-20
DESIGN ENGINEER OF RECORD: J.A. BATTS DATE: 2-20

**DOCUMENT NOT CONSIDERED FINAL
UNLESS ALL SIGNATURES COMPLETED**