

4/7/2020 4:10:47 PM G:\Projects\2018\Division 3 (SEA)\B-5639 (Duplin 36 NC11 over Maxwell Creek)\Structures\Drawings\Final\B5639\_SMJ\_LFRF\_300036.dgn

## LOAD AND RESISTANCE FACTOR RATING (LRFD) SUMMARY FOR PRESTRESSED CONCRETE GIRDERS

LEVEL	VEHICLE	WEIGHT (W) (TONS)	CONTROLLING LOAD RATING	MINIMUM RATING FACTORS (RF)	TONS = W X RF	STRENGTH I LIMIT STATE										SERVICE III LIMIT STATE					COMMENT NUMBER			
						LIVELOAD FACTORS	MOMENT					SHEAR					LIVELOAD FACTORS	MOMENT						
							DISTRIBUTION FACTORS (DF)	RATING FACTOR	SPAN	GIRDER LOCATION	DISTANCE FROM LEFT END OF SPAN (ft)	DISTRIBUTION FACTORS (DF)	RATING FACTOR	SPAN	GIRDER LOCATION	DISTANCE FROM LEFT END OF SPAN (ft)		DISTRIBUTION FACTORS (DF)	RATING FACTOR	SPAN		GIRDER LOCATION	DISTANCE FROM LEFT END OF SPAN (ft)	
DESIGN LOAD RATING	HL-93(Inv)	N/A	<b>1</b>	2.073	--	1.75	0.28	3.04	60'	EL	24.5	0.534	<b>2.07</b>	60'	EL	<b>2.45</b>	0.80	0.28	2.85	60'	EL	24.5		
	HL-93(Opr)	N/A	--	2.687	--	1.35	0.28	3.93	60'	EL	24.5	0.534	2.69	60'	EL	2.45	N/A	--	--	--	--	--		
	HS-20(Inv)	36.000	<b>2</b>	2.479	89.25	1.75	0.28	3.76	60'	EL	24.5	0.534	<b>2.48</b>	60'	EL	<b>2.45</b>	0.80	0.28	3.52	60'	EL	24.5		
	HS-20(Opr)	36.000	--	3.214	115.694	1.35	0.28	4.88	60'	EL	24.5	0.534	3.21	60'	EL	2.45	N/A	--	--	--	--	--		
LEGAL LOAD RATING	SV	SNSH	13.500	--	6.997	94.455	1.4	0.28	9.57	60'	EL	24.5	0.534	7	60'	EL	2.45	0.80	0.28	7.20	60'	EL	24.5	
		SNGARBS2	20.000	--	5.091	101.826	1.4	0.28	7.56	60'	EL	24.5	0.534	5.09	60'	EL	2.45	0.80	0.28	5.65	60'	EL	24.5	
		SNAGRIS2	22.000	--	4.772	104.98	1.4	0.28	7.26	60'	EL	19.6	0.534	4.77	60'	EL	2.45	0.80	0.28	5.45	60'	EL	19.6	
		SNCOTTS3	27.250	--	3.505	95.499	1.4	0.28	4.78	60'	EL	24.5	0.534	3.5	60'	EL	2.45	0.80	0.28	3.59	60'	EL	24.5	
		SNAGGRS4	34.925	--	2.991	104.445	1.4	0.28	4.15	60'	EL	24.5	0.534	2.99	60'	EL	2.45	0.80	0.28	3.12	60'	EL	24.5	
		SNS5A	35.550	--	3.044	108.209	1.4	0.28	4.05	60'	EL	24.5	0.534	3.07	60'	EL	2.45	0.80	0.28	3.04	60'	EL	24.5	
		SNS6A	39.950	--	2.84	113.453	1.4	0.28	3.79	60'	EL	24.5	0.534	2.84	60'	EL	2.45	0.80	0.28	2.85	60'	EL	24.5	
	SNS7B	42.000	--	2.712	113.918	1.4	0.28	3.61	60'	EL	24.5	0.534	2.84	60'	EL	2.45	0.80	0.28	2.71	60'	EL	24.5		
	TTST	TNAGRIT3	33.000	--	3.351	110.572	1.4	0.28	4.64	60'	EL	24.5	0.534	3.35	60'	EL	2.45	0.80	0.28	3.49	60'	EL	24.5	
		TNT4A	33.075	--	3.228	106.768	1.4	0.28	4.68	60'	EL	24.5	0.534	3.23	60'	EL	2.45	0.80	0.28	3.52	60'	EL	24.5	
		TNT6A	41.600	--	2.93	121.871	1.4	0.28	3.9	60'	EL	24.5	0.534	3.1	60'	EL	2.45	0.80	0.28	2.93	60'	EL	24.5	
		TNT7A	42.000	--	2.892	121.477	1.4	0.28	3.96	60'	EL	24.5	0.534	2.89	60'	EL	2.45	0.80	0.28	2.97	60'	EL	24.5	
		TNT7B	42.000	--	2.736	114.922	1.4	0.28	4.12	60'	EL	24.5	0.534	2.74	60'	EL	2.45	0.80	0.28	3.08	60'	EL	24.5	
		TNAGRIT4	43.000	--	2.637	113.381	1.4	0.28	3.91	60'	EL	24.5	0.534	2.64	60'	EL	2.45	0.80	0.28	2.94	60'	EL	24.5	
TNAGT5A		45.000	--	2.676	120.405	1.4	0.28	3.66	60'	EL	24.5	0.534	2.68	60'	EL	2.45	0.80	0.28	2.75	60'	EL	24.5		
TNAGT5B	45.000	<b>3</b>	2.502	112.57	1.4	0.28	3.58	60'	EL	24.5	0.534	<b>2.5</b>	60'	EL	<b>2.45</b>	0.80	0.28	2.69	60'	EL	24.5			

**LOAD FACTORS:**

DESIGN LOAD RATING FACTORS	LIMIT STATE	$\gamma_{DC}$	$\gamma_{DW}$
	STRENGTH I	1.25	1.50
	SERVICE III	1.00	1.00

**NOTES:**

MINIMUM RATING FACTORS ARE BASED ON THE STRENGTH I AND SERVICE III LIMIT STATES.  
 ALLOWABLE STRESSES FOR SERVICE III LIMIT STATE ARE AS REQUIRED FOR DESIGN.  
 DISTANCE FROM LEFT END OF SPAN IS MEASURED FROM  $\bar{C}$  BEARING.

**# CONTROLLING LOAD RATING**

1 DESIGN LOAD RATING (HL-93)

2 DESIGN LOAD RATING (HS-20)

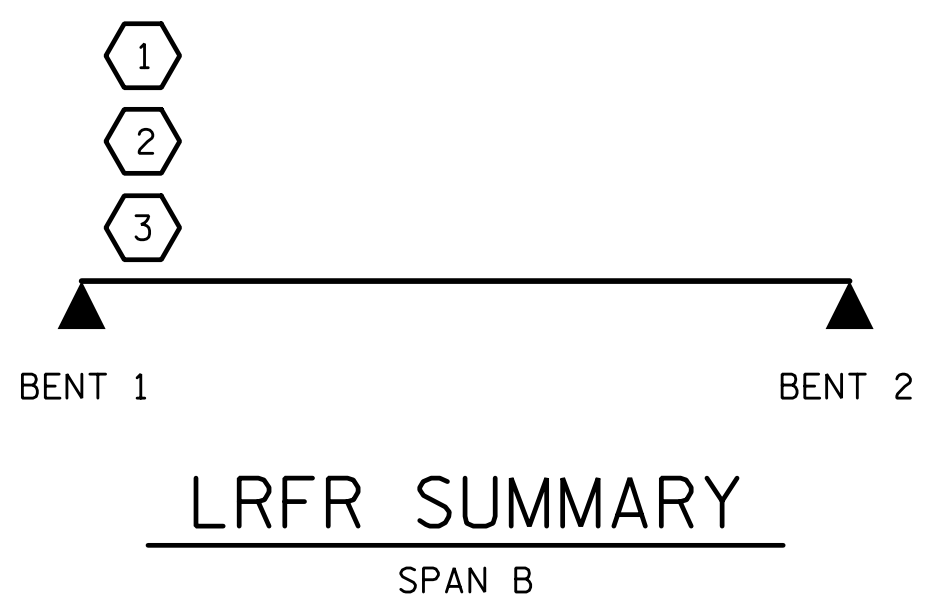
3 LEGAL LOAD RATING \*\*\*

\*\*\* SEE CHART FOR VEHICLE TYPE

---

**GIRDER LOCATION**

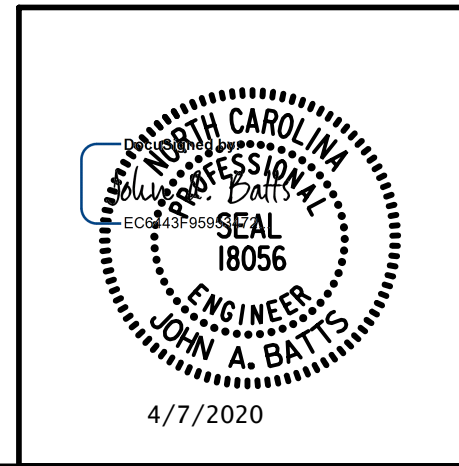
I - INTERIOR GIRDER  
 EL - EXTERIOR LEFT GIRDER  
 ER - EXTERIOR RIGHT GIRDER



PROJECT NO. B-5639  
DUPLIN COUNTY  
 STATION: 23+55.00 -L-

DRAWN BY: T. BANKOVICH DATE: 2-20  
 CHECKED BY: J.A. BATTS DATE: 2-20  
 DESIGN ENGINEER OF RECORD: J.A. BATTS DATE: 2-20

PLANS PREPARED BY:  
**SE & A**  
 SIMPSON ENGINEERS ASSOCIATES  
 5640 Dillard Drive  
 Suite 200  
 Cary, NC 27518  
 (919) 852-0468  
 (919) 852-0538 (Fax)  
 www.simpsonengr.com  
 LICENSURE NO. C-2521



STATE OF NORTH CAROLINA  
 DEPARTMENT OF TRANSPORTATION  
 RALEIGH

**LRFR SUMMARY FOR  
 60' CORED SLAB UNITS  
 90° SKEW  
 (NON-INTERSTATE TRAFFIC)**

REVISIONS						SHEET NO.
NO.	BY:	DATE:	NO.	BY:	DATE:	S-6
1			3			TOTAL SHEETS
2			4			25

**DOCUMENT NOT CONSIDERED FINAL  
 UNLESS ALL SIGNATURES COMPLETED**