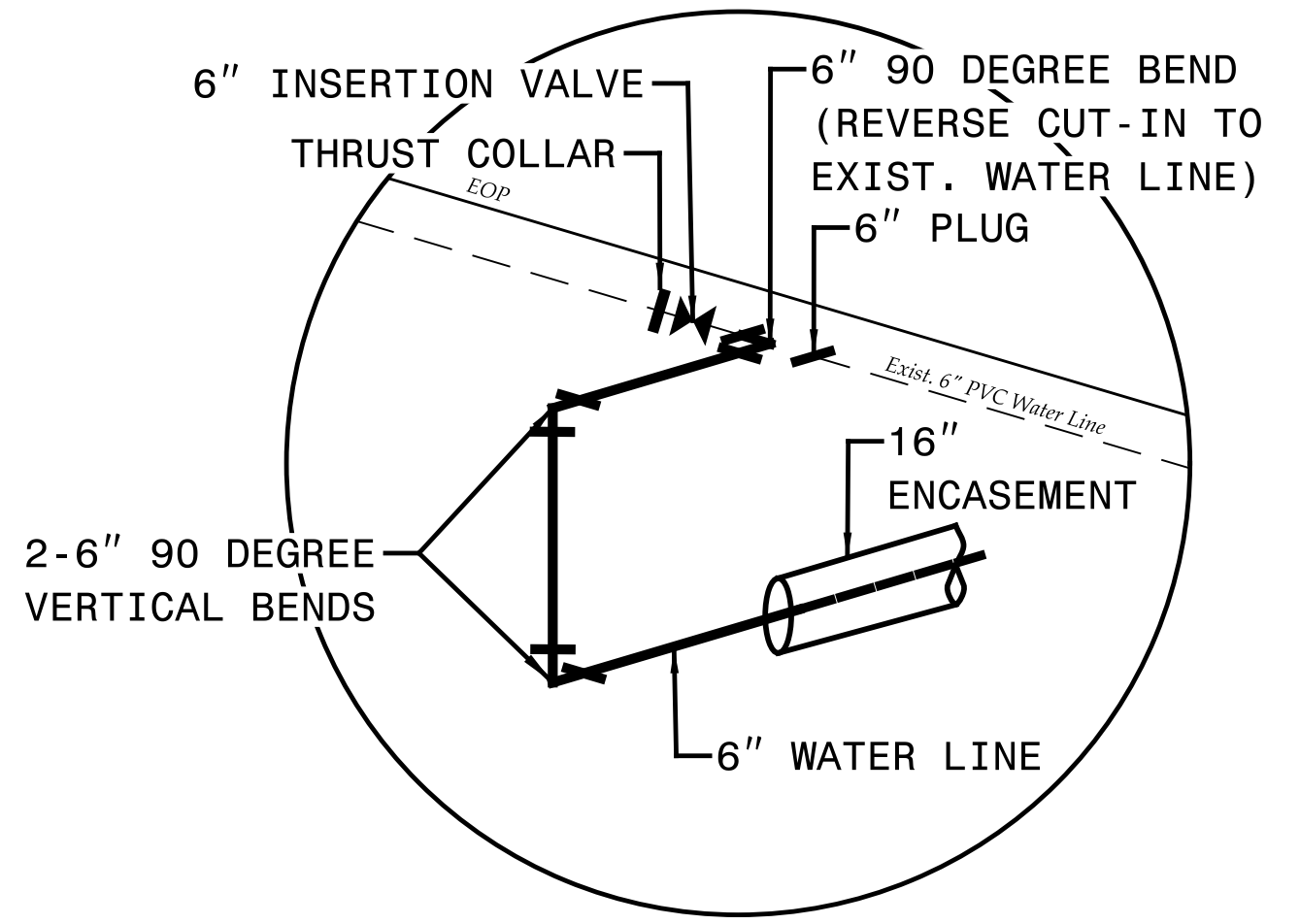


5/14/99

NAD 83/2011

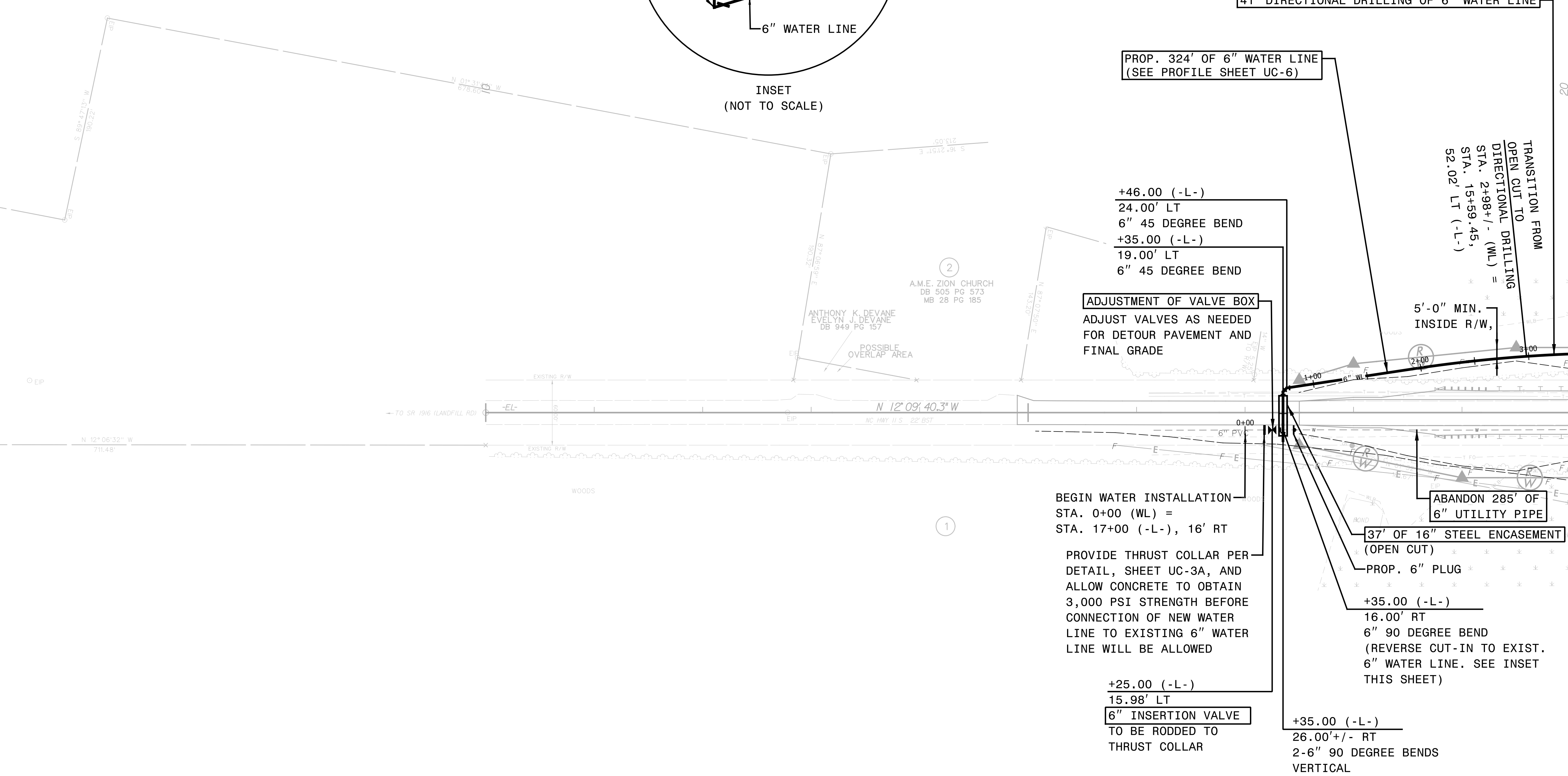
505 POUNDS OF DUCTILE IRON WATER PIPE FITTINGS



INSET (NOT TO SCALE)

PREPARED IN THE OFFICE OF: THE WOOTEN COMPANY <small>120 North Ridge Avenue Raleigh, NC 27603-1423 919.828.9311 fax 919.828.2389 License Number: F-4015</small>	PROJECT REFERENCE NO.	SHEET NO.
	B-5639	UC-4
DESIGNED BY: DGM		
DRAWN BY: TK		
CHECKED BY: CMG		
APPROVED BY: DGM		
REVISED:	NORTH CAROLINA DEPARTMENT OF TRANSPORTATION UTILITIES ENGINEERING SEC. PHONE: (919) 707-6690 FAX: (919) 250-4151	
WATER LINE CONSTRUCTION SHOWN ON THIS SHEET		

UTILITY CONSTRUCTION



PROP. 324' OF 6" WATER LINE (SEE PROFILE SHEET UC-6)

+46.00 (-L-)
 24.00' LT
 6" 45 DEGREE BEND
 +35.00 (-L-)
 19.00' LT
 6" 45 DEGREE BEND

ADJUSTMENT OF VALVE BOX
 ADJUST VALVES AS NEEDED FOR DETOUR PAVEMENT AND FINAL GRADE

BEGIN WATER INSTALLATION
 STA. 0+00 (WL) =
 STA. 17+00 (-L-), 16' RT

PROVIDE THRUST COLLAR PER DETAIL, SHEET UC-3A, AND ALLOW CONCRETE TO OBTAIN 3,000 PSI STRENGTH BEFORE CONNECTION OF NEW WATER LINE TO EXISTING 6" WATER LINE WILL BE ALLOWED

+25.00 (-L-)
 15.98' LT
6" INSERTION VALVE
 TO BE RODDED TO THRUST COLLAR

+35.00 (-L-)
 16.00' RT
 6" 90 DEGREE BEND (REVERSE CUT-IN TO EXIST. 6" WATER LINE. SEE INSET THIS SHEET)

+35.00 (-L-)
 26.00' +/- RT
 2-6" 90 DEGREE BENDS VERTICAL

TRANSITION FROM OPEN CUT TO DIRECTIONAL DRILLING
 STA. 2+98+/- (WL) =
 STA. 15+59.45,
 52.02' LT (-L-)

5'-0" MIN. INSIDE R/W,

ABANDON 285' OF 6" UTILITY PIPE

37' OF 16" STEEL ENCASEMENT (OPEN CUT)

PROP. 6" PLUG

MATCHLINE -L- STA. 20 + 00.00 SEE SHEET UC-5

5/14/99