

PRIOR TO COMMENCING ANY WORK ON ANY TRENCHLESS INSTALLATION ON THIS PROJECT, PROVIDE A DESIGN FOR THE TRENCHLESS INSTALLATION CERTIFIED BY AN ENGINEER LICENSED BY THE STATE OF NORTH CAROLINA, AS REQUIRED BY SUBARTICLE 1550-3 (B) OF THE STANDARD SPECIFICATIONS.

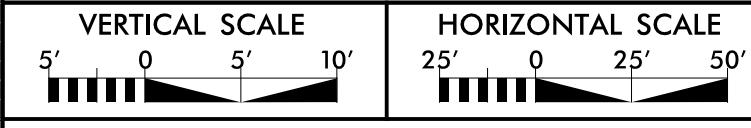
### PROFILE SHOWN IS BASED ON STATIONING ALONG PROPOSED WATER LINE ALIGNMENT ALONG ROADWAY ALIGNMENT -L- (SEE SHEET UC-4 & UC-5)

## 6" Water Line

PREPARED IN THE OFFICE OF:

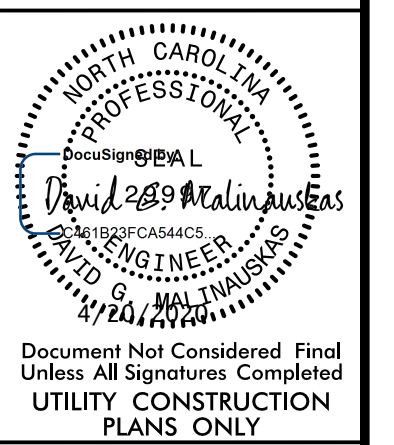


**THE WOOTEN COMPANY**  
120 North Raleigh Avenue Raleigh, NC 27603-1423  
919.833.8221 Fax: 919.833.2589  
License Number: F-4015

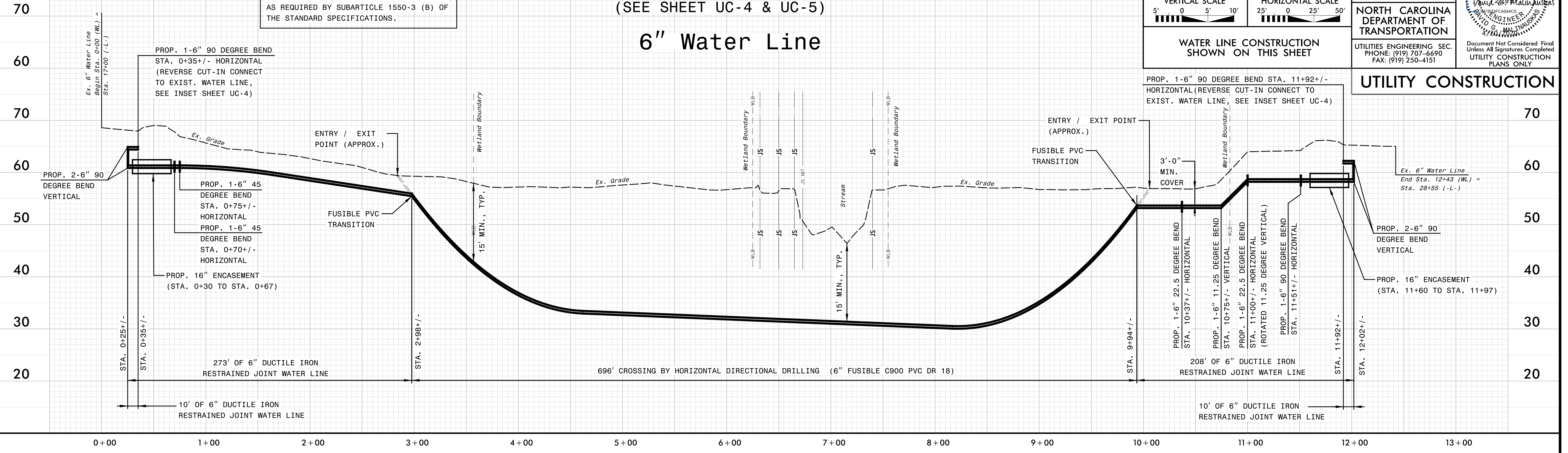


WATER LINE CONSTRUCTION SHOWN ON THIS SHEET

PROJECT REFERENCE NO. <b>B-5639</b>	SHEET NO. <b>UC-6</b>
DESIGNED BY: DGM	
DRAWN BY: TK	
CHECKED BY: CMG	
APPROVED BY: DGM	
REVISED:	
<b>NORTH CAROLINA DEPARTMENT OF TRANSPORTATION</b>	
UTILITIES ENGINEERING SEC. PHONE: (919) 707-6690 FAX: (919) 250-4151	



### UTILITY CONSTRUCTION



C:\Users\TK\OneDrive\Documents\Projects\B-5639\UC-6.dwg